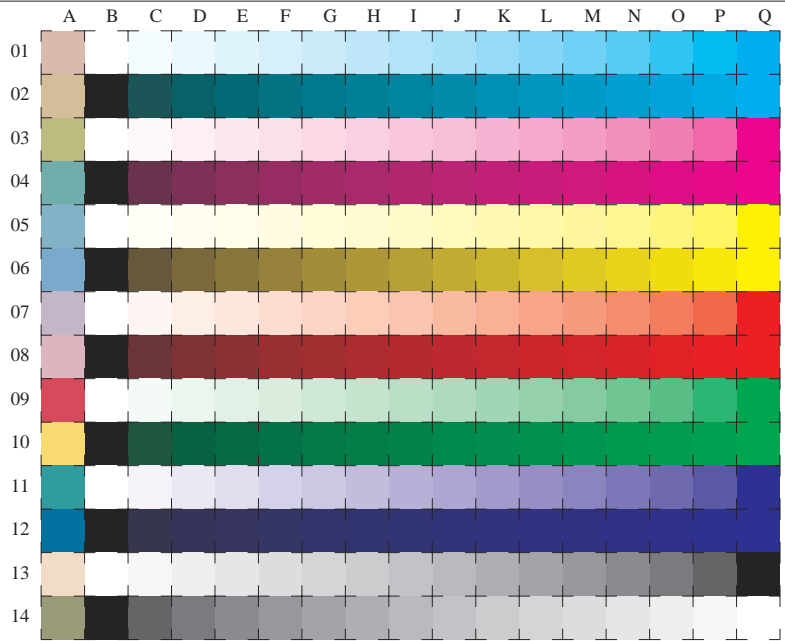


See for similar files: <http://www.ps.bam.de/LE12/1E12.HTM>  
 Information and Order: <http://www.ps.bam.de> Version 2.0, io=0, iTLS, oTLS, CIELAB



used coordinate squares  
**C**  $LAB^*_{\text{TLS00}}$   
**M**  $LAB^*_{\text{TLS00}}$   
**Y**  $LAB^*_{\text{TLS00}}$   
**O**  $LAB^*_{\text{TLS00}}$   
**L**  $LAB^*_{\text{TLS00}}$   
**V**  $LAB^*_{\text{TLS00}}$   
**N/W**  $LAB^*_{\text{TLS00}}$

16 equidistant CIELAB steps: C-W, C-N, M-W, M-N, Y-W, Y-N, O-W, O-N, L-W, L-N, V-W, V-N, N-W, W-N and 14 CIE-test colours (left)

Test chart LE12: 16 CIELAB steps of ISO/IEC 15775  
 Chromatic-White, Chromatic-Black, Black-White

input ,TLS00:  $LAB^*_{\text{setcolor}}/cmy^n_{\text{setcmyk}}$   
 output ,TLS00:  $cmy0^*/000^n_{\text{setcmykcolor}}$

BAM registration: 20030101-LE12/10Q/Q12E00F1.PS/.TXT BAM material: code=thata  
 application for measurement of monitor (Y1=2.5) and printer output