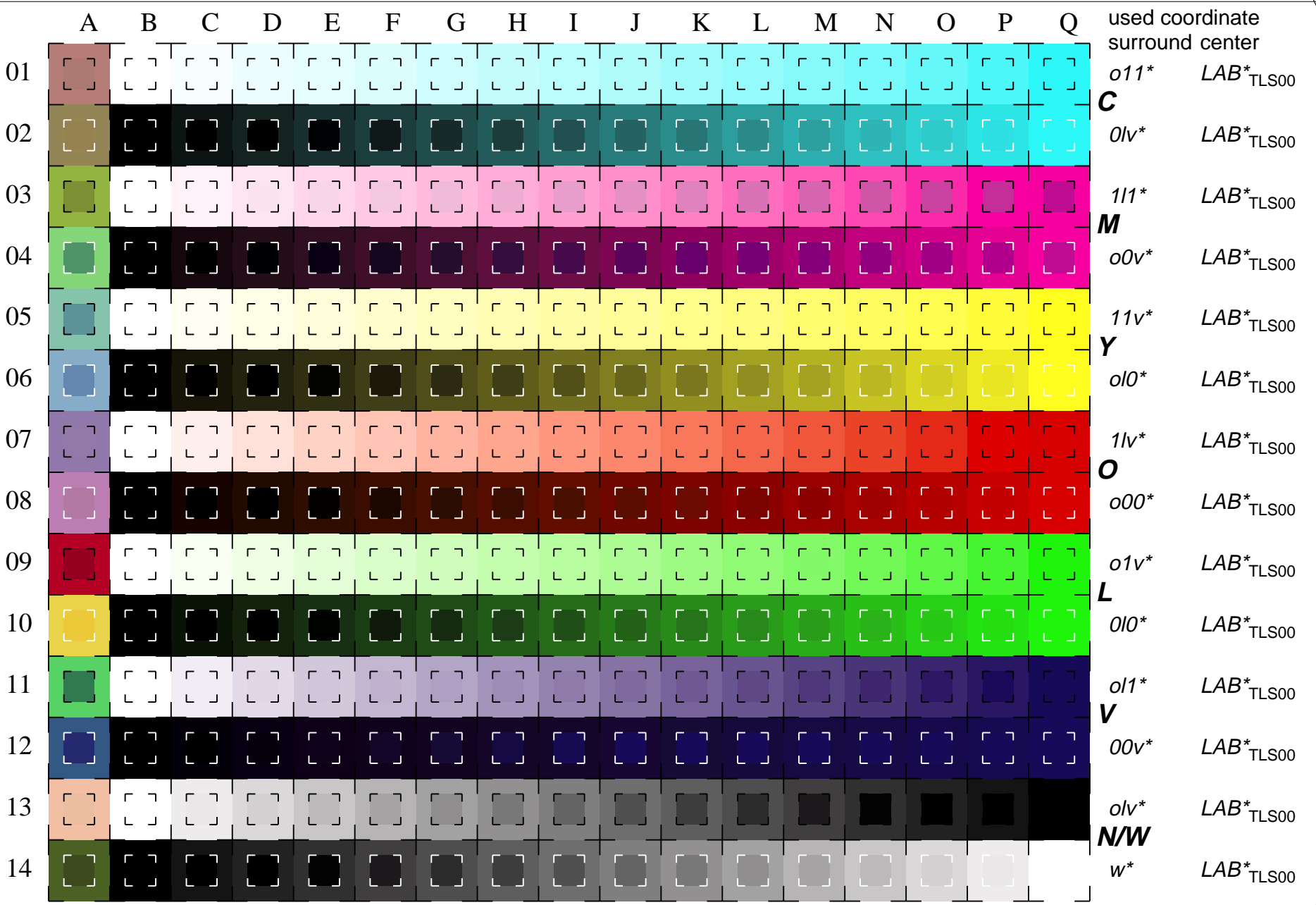


See for similar files: <http://www.ps.bam.de/LE17/10L/L17E04FP.PS/.PDF>
 Information and Order: [http://www.ps.bam.de/Version 2.0,io=0,4;itLS;otLS,CIELAB](http://www.ps.bam.de/Version%202.0,io=0,4;itLS;otLS,CIELAB)

BAM registration: 20030101-LE17/10L/L17E04FP.PS/.PDF
 application for measurement of monitor (Yr=2.5) and printer output
 BAM material: code=tha4ta



16 equidistant CIELAB steps: C-W, C-N, M-W, M-N, Y-W, Y-N, O-W, O-N, L-W, L-N, V-W, V-N, N-W, W-N and 14 CIE-test colours (left)

Test chart LE17: 16 CIELAB steps of ISO/IEC 15775 input ,TLS00: LAB* setcolor/olv* setrgbcolor
 Chromatic-White, Chromatic-Black, Black-White output ,TLS00: lab* setcolor

