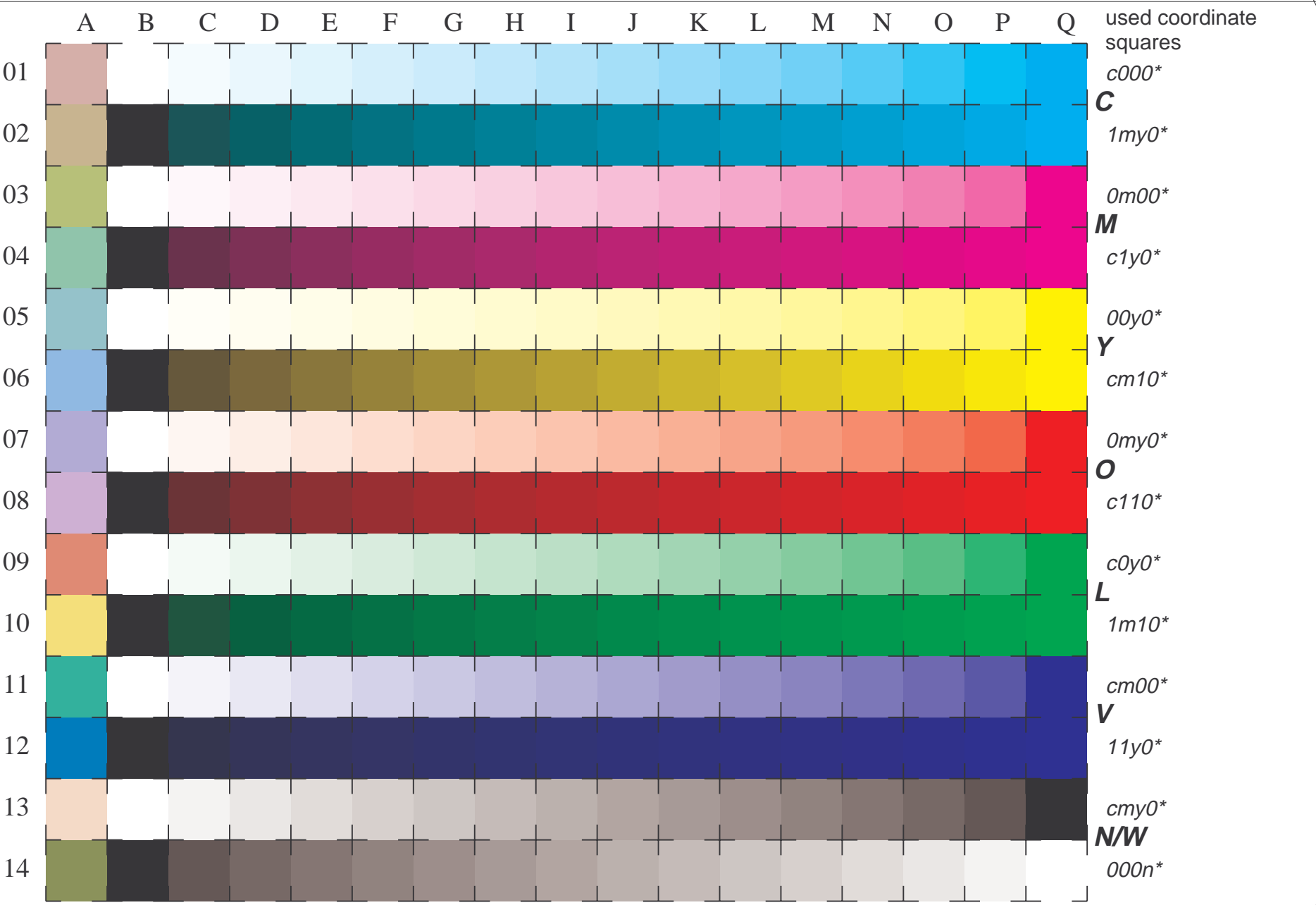


See for similar files: <http://www.ps.bam.de/LE20/10Q/Q20E02FP.PS/.PDF>
 Information and Order: <http://www.ps.bam.de/LE20/LE20.HTM>
 Version 2.0, io=0,2; iORS; oORS, CIELAB

BAM registration: 20030101-LE20/10Q/Q20E02FP.PS/.PDF BAM material: code=tha4ta
 application for measurement of monitor (Yr=2.5) and printer output



used coordinate squares
*c000**

C
*1my0**

*0m00**

M
*c1y0**

*00y0**

Y
*cm10**

*0my0**

O
*c110**

*c0y0**

L
*1m10**

*cm00**

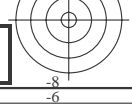
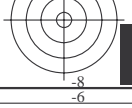
V
*11y0**

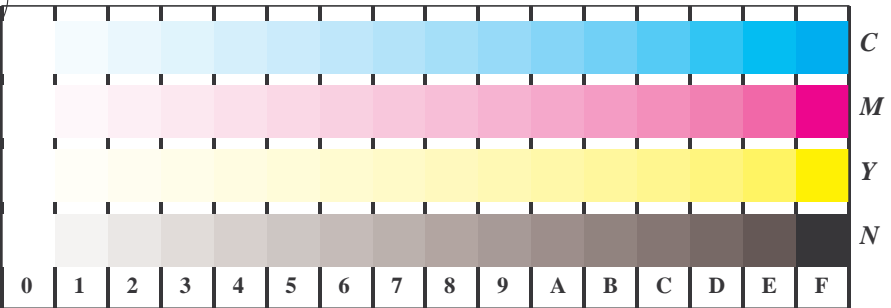
*cmy0**

N/W
*000n**

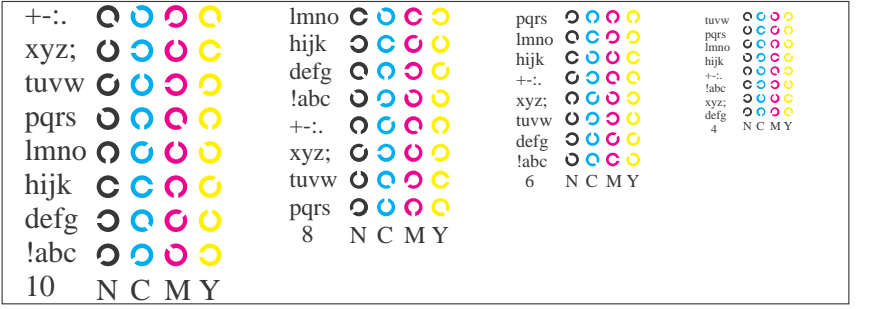
16 equidistant CIELAB steps: C-W, C-N, M-W, M-N, Y-W, Y-N, O-W, O-N, L-W, L-N, V-W, V-N, N-W (*cmy0**), W-N (*000n**) and 14 CIE-test colours (left)

Test chart LE20: 16 CIELAB steps of ISO/IEC 15775
 Chromatic-White, Chromatic-Black, Black-White
 input(ORS18): *cmyn* setcmykcolor*
 output(ORS18): *cmy0* / nnn0* setcmykcolor*

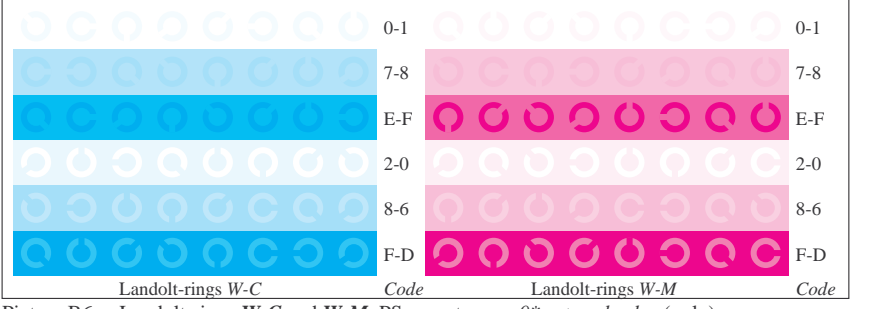




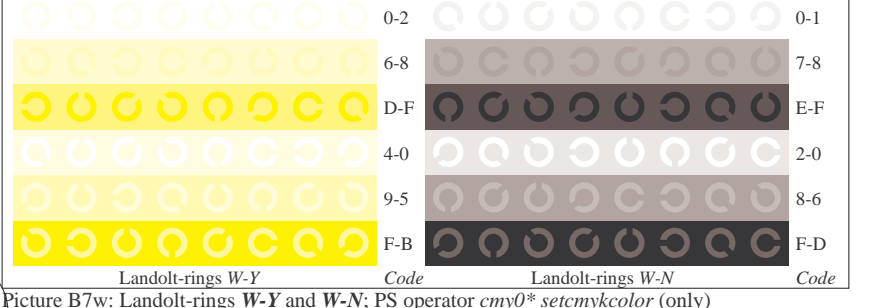
Picture B4w: 16 equidistant steps W-C, W-M, W-Y and W-N; PS operator *cmY0* setcmykcolor* (only)



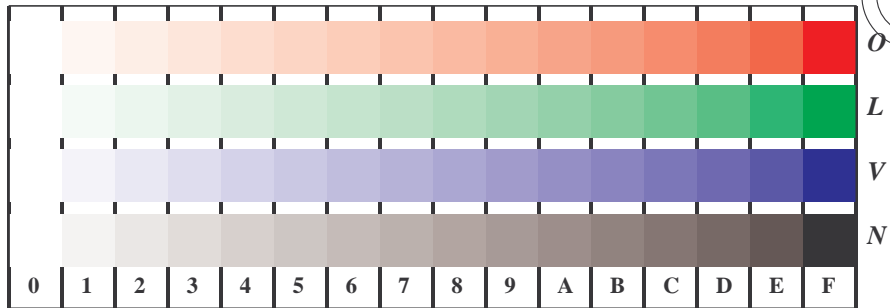
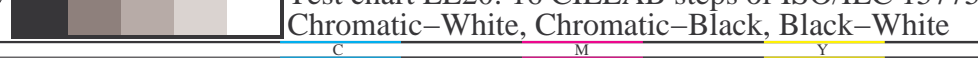
Picture B5w: Script and Landolt-rings N, M, C and Y; PS operator *cmY0* setcmykcolor* (only)



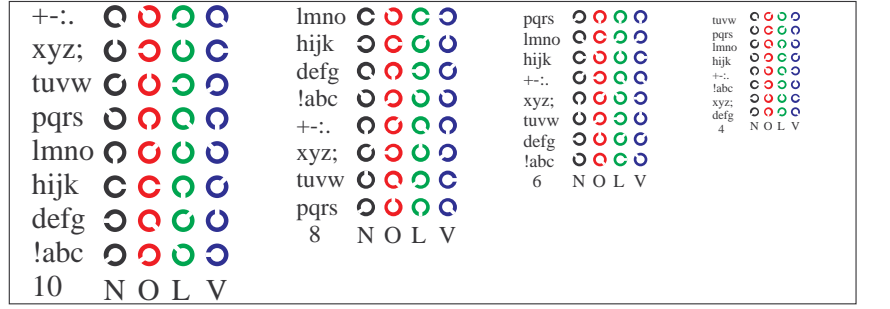
Picture B6w: Landolt-rings W-C and W-M; PS operator *cmY0* setcmykcolor* (only)



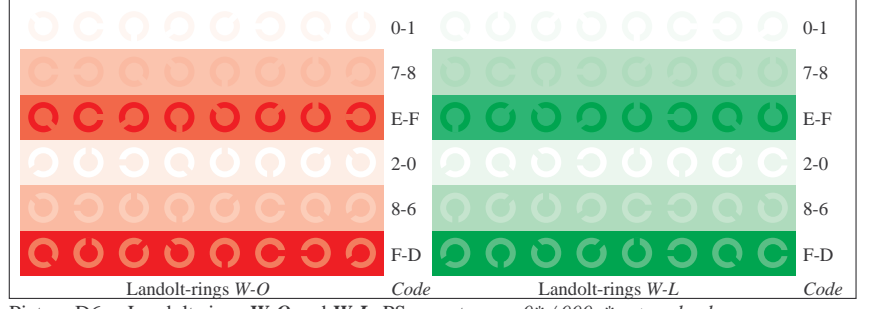
Picture B7w: Landolt-rings W-Y and W-N; PS operator *cmY0* setcmykcolor* (only)



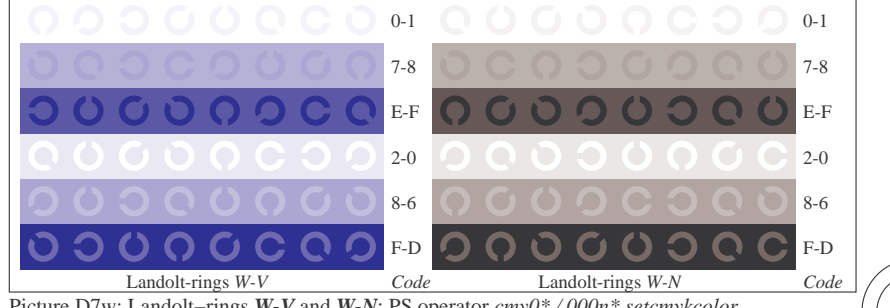
Picture D4w: 16 equidistant steps W-O, W-L, W-V and W-N; PS operator *cmY0*/000n* setcmykcolor*



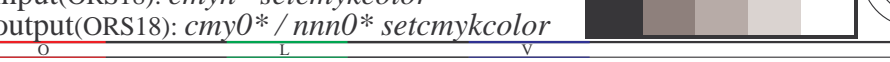
Picture D5w: Script and Landolt-rings N, O, L and V; PS operator *cmY0*/000n* setcmykcolor*



Picture D6w: Landolt-rings W-O and W-L; PS operator *cmY0*/000n* setcmykcolor*



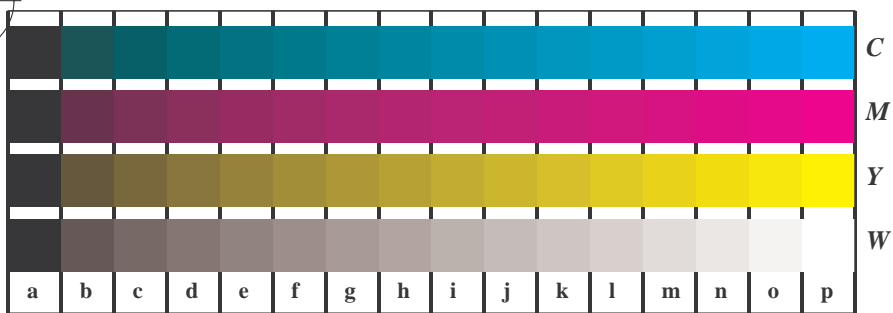
Picture D7w: Landolt-rings W-V and W-N; PS operator *cmY0*/000n* setcmykcolor*



See for similar files: <http://www.ps.bam.de/LE20/LE20.HTM>
 Information and Order: <http://www.ps.bam.de>

Version 2.0, io=0,2; iORS; oORS, CIELAB

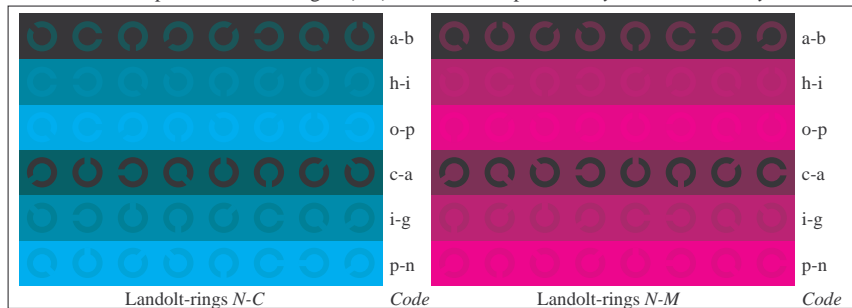
BAM registration: 20030101-LE20/10Q/Q20E12FP.PS/.PDF
 application for measurement of monitor (Yr=2.5) and printer output
 BAM material: code=th4ta



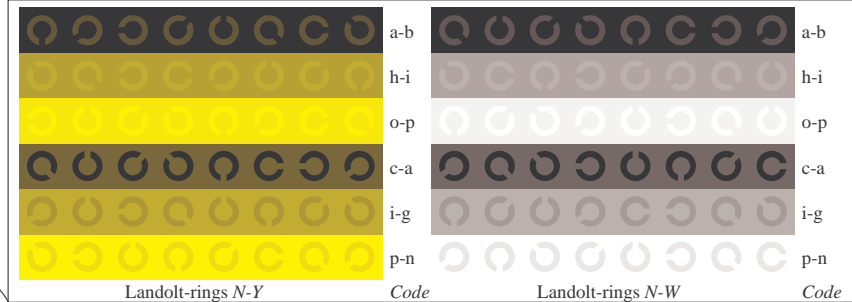
Picture B4n: 16 equidistant steps *N-C, N-M, N-Y* and *N-W*; PS operator $cm\dot{y}0^*/000n^*$ *setcmykcolor*



Picture B5n: Script and Landolt-rings *W, M, C* and *Y*; PS operator $cm\dot{y}0^*/000n^*$ *setcmykcolor*



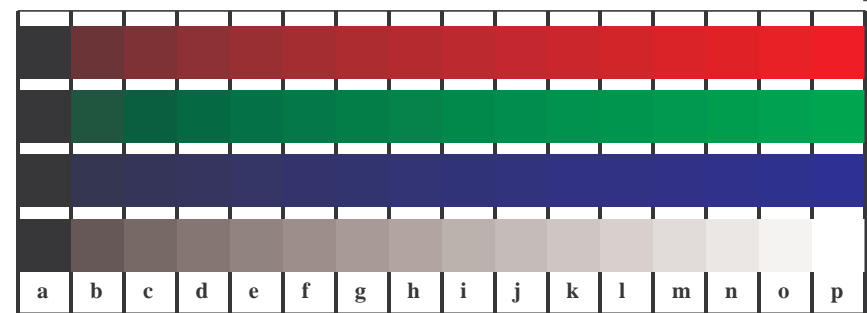
Picture B6n: Landolt-rings *N-C* and *N-M*; Use of PS operator $cm\dot{y}0^*/000n^*$ *setcmykcolor*



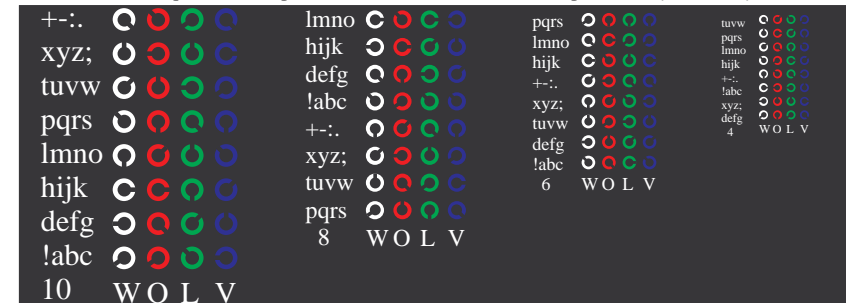
Picture B7n: Landolt-rings *N-Y* and *N-W*; PS operator $cm\dot{y}0^*/000n^*$ *setcmykcolor*



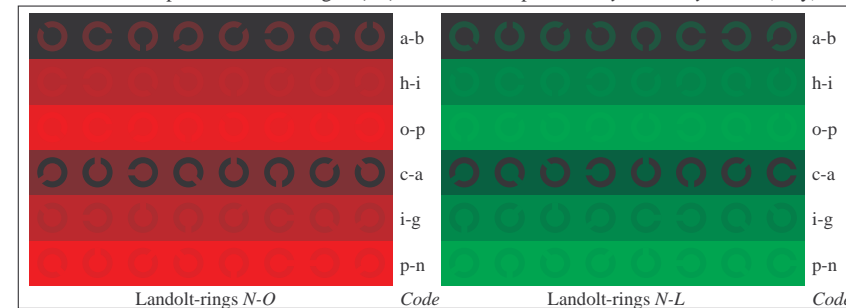
Test chart LE20: 16 CIELAB steps of ISO/IEC 15775
 Chromatic-White, Chromatic-Black, Black-White



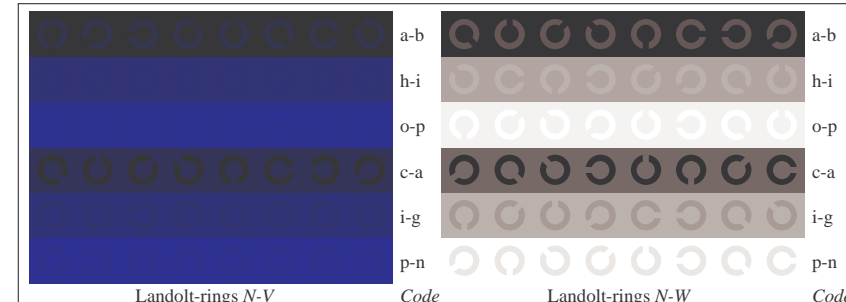
Picture D4n: 16 equidistant steps *N-O, N-L, N-V* and *N-W*; PS operator $cm\dot{y}0^*$ *setcmykcolor* (only)



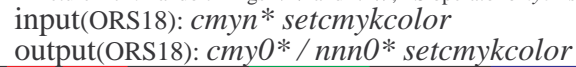
Picture D5n: Script and Landolt-rings *W, O, L* and *V*; PS operator $cm\dot{y}0^*$ *setcmykcolor* (only)



Picture D6n: Landolt-rings *N-O* and *N-L*; Use of PS operator $cm\dot{y}0^*$ *setcmykcolor* (only)



Picture D7n: Landolt-rings *N-V* and *N-W*; PS operator $cm\dot{y}0^*$ *setcmykcolor* (only)



input(ORS18): $cm\dot{y}n^*$ *setcmykcolor*
 output(ORS18): $cm\dot{y}0^*/nnn0^*$ *setcmykcolor*

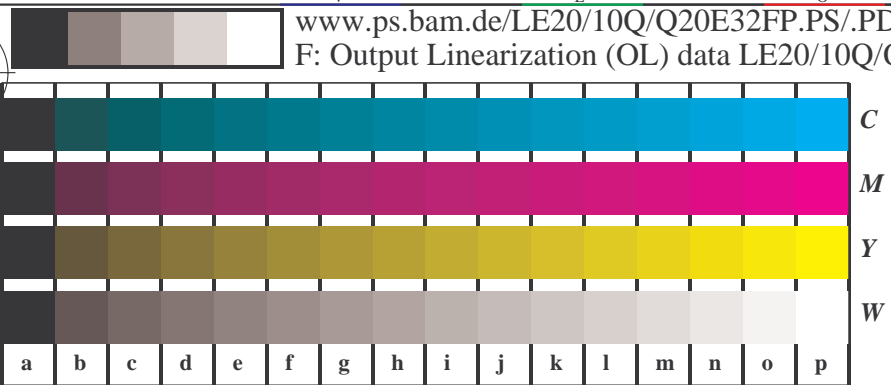
See for similar files: <http://www.ps.bam.de/LE20/10Q/Q20E22FP.PS/.PDF>
 Information and Order: <http://www.ps.bam.de>

Version 2.0, io=0,2; iORS; oORS, CIELAB

BAM registration: 20030101-LE20/10Q/Q20E22FP.PS/.PDF
 application for measurement of monitor (Yr=2.5) and printer output
 BAM material: code=th4t4

See for similar files: <http://www.ps.bam.de/LE20/LE20.HTM>
 Information and Order: <http://www.ps.bam.de>

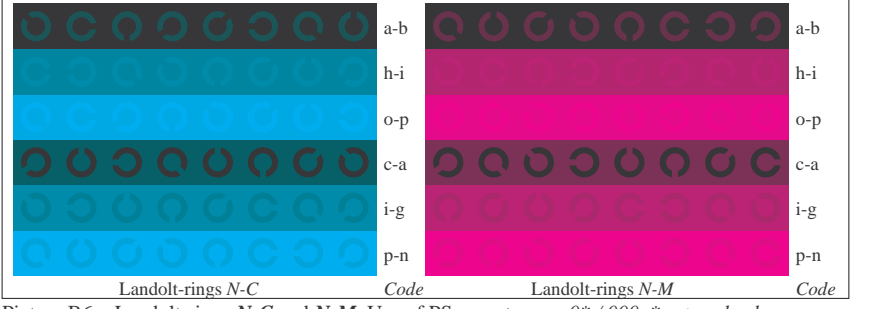
Version 2.0, io=0,2; iORS; oORS, CIELAB



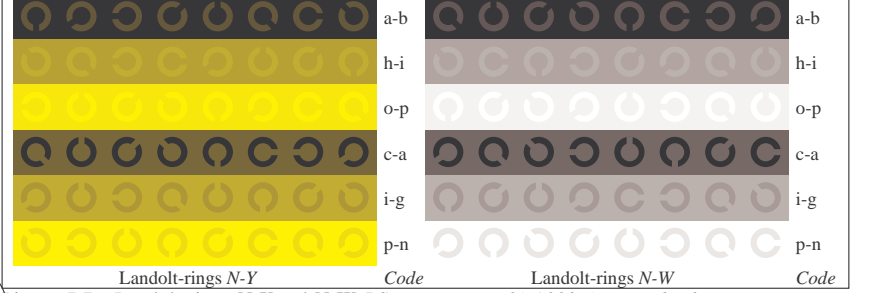
Picture B4n: 16 equidistant steps N-C, N-M, N-Y and N-W; PS operator $cm\gamma0^*/000n^*$ setcmykcolor



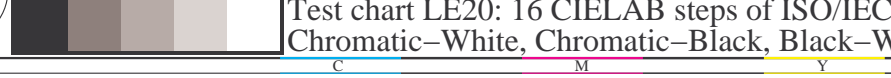
Picture B5n: Script and Landolt-rings W, M, C and Y; PS operator $cm\gamma0^*/000n^*$ setcmykcolor



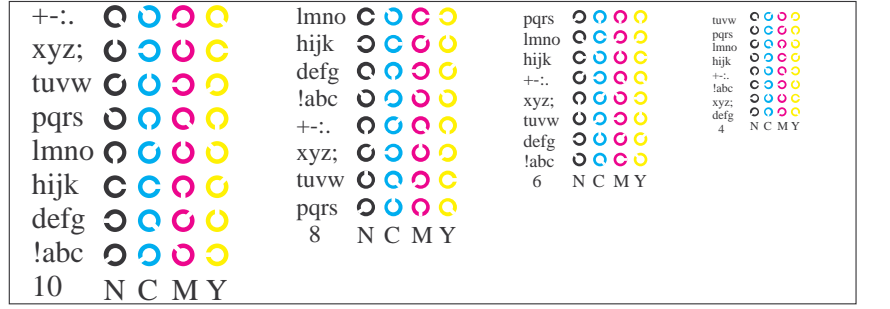
Picture B6n: Landolt-rings N-C and N-M; Use of PS operator $cm\gamma0^*/000n^*$ setcmykcolor



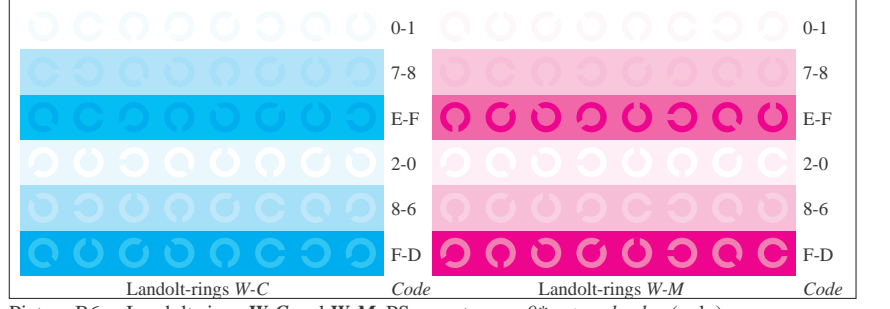
Picture B7n: Landolt-rings N-Y and N-W; PS operator $cm\gamma0^*/000n^*$ setcmykcolor



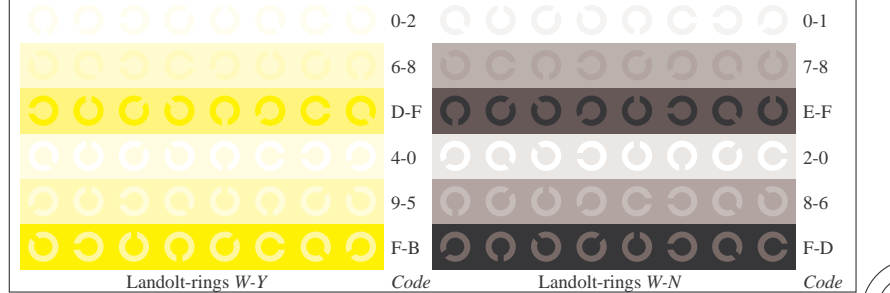
Picture B4w: 16 equidistant steps W-C, W-M, W-Y and W-N; PS operator $cm\gamma0^*$ setcmykcolor (only)



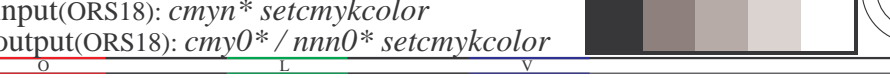
Picture B5w: Script and Landolt-rings N, M, C and Y; PS operator $cm\gamma0^*$ setcmykcolor (only)



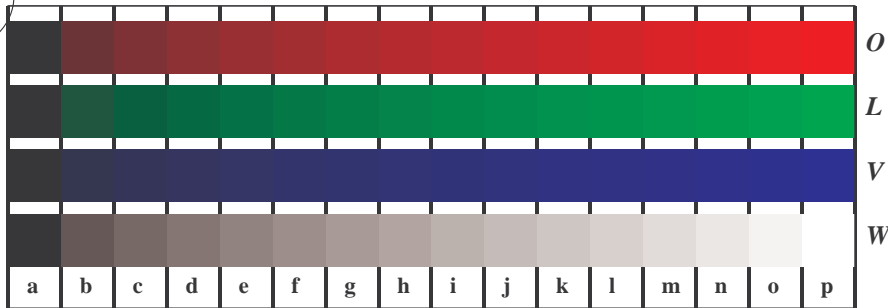
Picture B6w: Landolt-rings W-C and W-M; PS operator $cm\gamma0^*$ setcmykcolor (only)



Picture B7w: Landolt-rings W-Y and W-N; PS operator $cm\gamma0^*$ setcmykcolor (only)



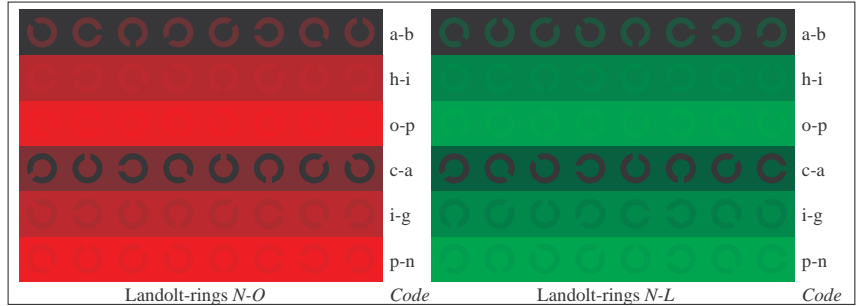
BAM registration: 20030101-LE20/10Q/Q20E32FP.PS/.PDF BAM material: code=th4t4
 application for measurement of monitor (Yr=2.5) and printer output



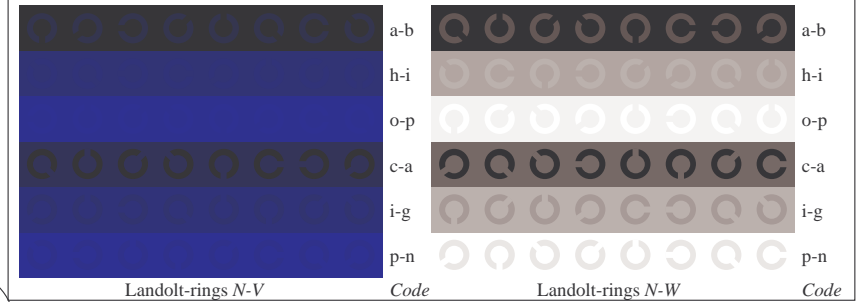
Picture D4n: 16 equidistant steps *N-O*, *N-L*, *N-V* and *N-W*; PS operator *cmY0* setcmykcolor* (only)



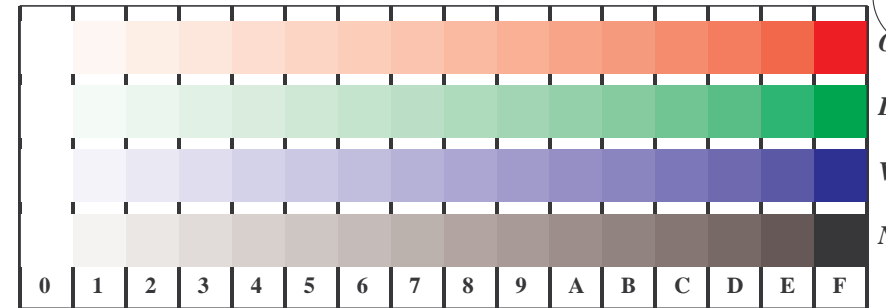
Picture D5n: Script and Landolt-rings *W*, *O*, *L* and *V*; PS operator *cmY0* setcmykcolor* (only)



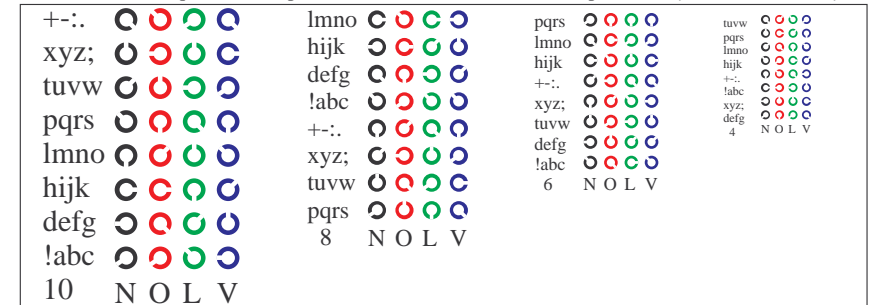
Picture D6n: Landolt-rings *N-O* and *N-L*; Use of PS operator *cmY0* setcmykcolor* (only)



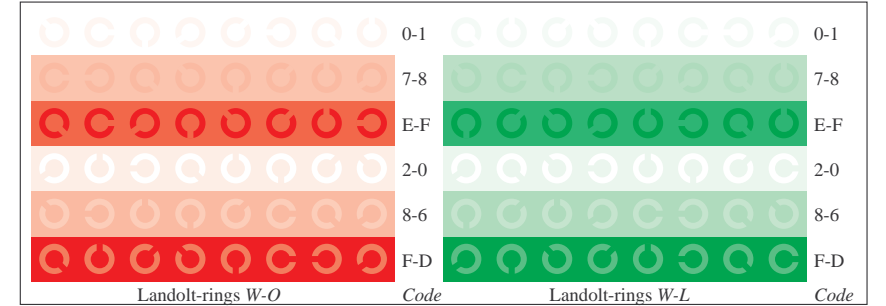
Picture D7n: Landolt-rings *N-V* and *N-W*; PS operator *cmY0* setcmykcolor* (only)



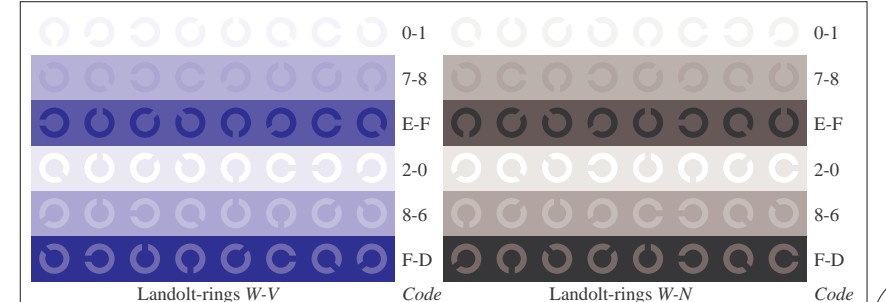
Picture D4w: 16 equidistant steps *W-O*, *W-L*, *W-V* and *W-N*; PS operator *cmY0* / 000n* setcmykcolor*



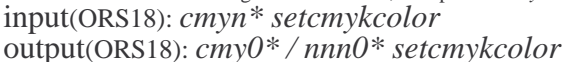
Picture D5w: Script and Landolt-rings *N*, *O*, *L* and *V*; PS operator *cmY0* / 000n* setcmykcolor*



Picture D6w: Landolt-rings *W-O* and *W-L*; PS operator *cmY0* / 000n* setcmykcolor*



Picture D7w: Landolt-rings *W-V* and *W-N*; PS operator *cmY0* / 000n* setcmykcolor*



See for similar files: <http://www.ps.bam.de/LE20/LE20.HTM>
 Information and Order: <http://www.ps.bam.de>

Version 2.0, io=0,2; iORS; oORS, CIELAB

BAM registration: 20030101-LE20/10Q/Q20E42FP.PS/.PDF
 application for measurement of monitor (Yr=2.5) and printer output
 BAM material: code=th44ta