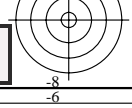
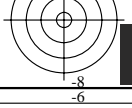
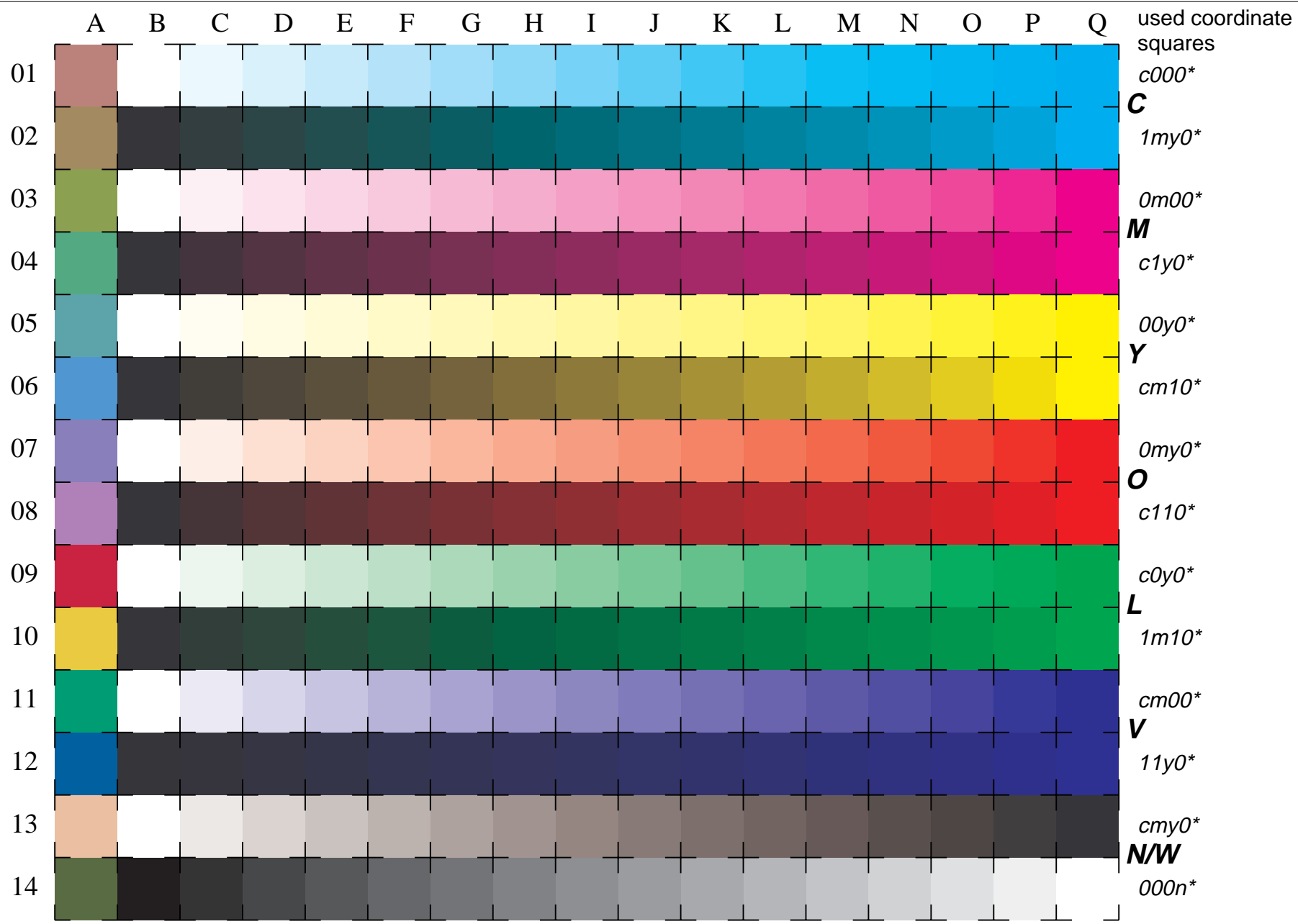
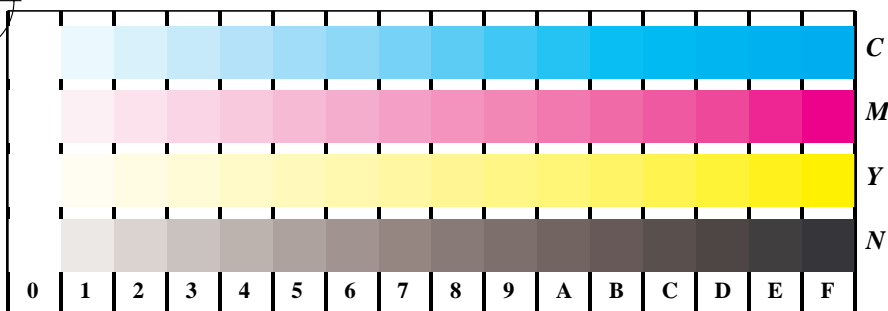


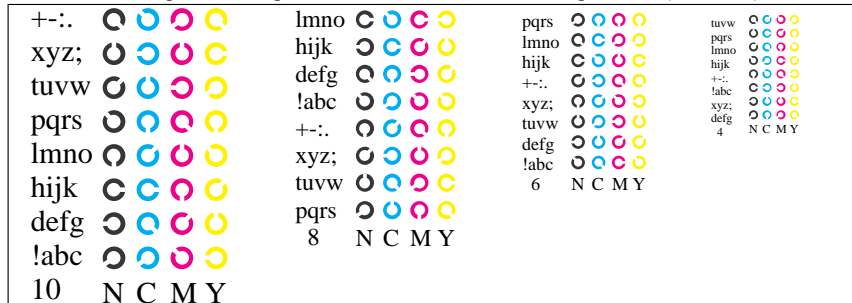
See for similar files: <http://www.ps.bam.de/LE20/LE20.HTM>
Information and Order: <http://www.ps.bam.de> Version 2.0, io=0,0

BAM registration: 20030101-LE20/10Q/Q20E05NP.PS/.PDF BAM material: code=tha4ta
application for measurement of monitor (Yr=2.5) and printer output

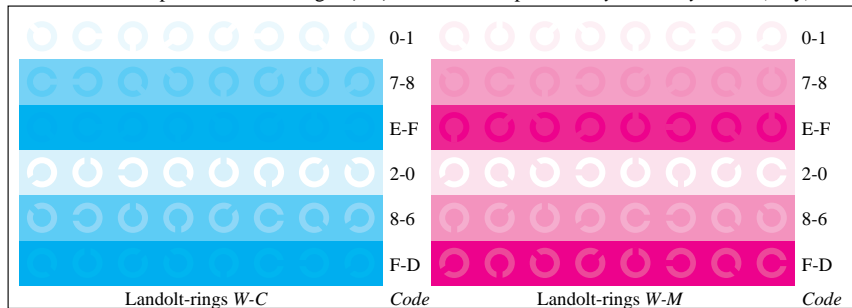




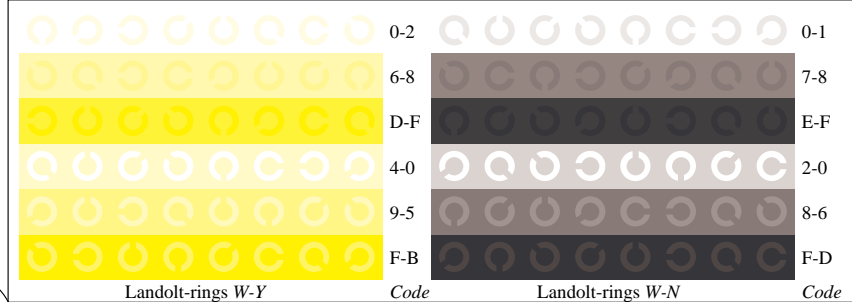
Picture B4w: 16 equidistant steps W-C, W-M, W-Y and W-N; PS operator *cmY0* setcmykcolor* (only)



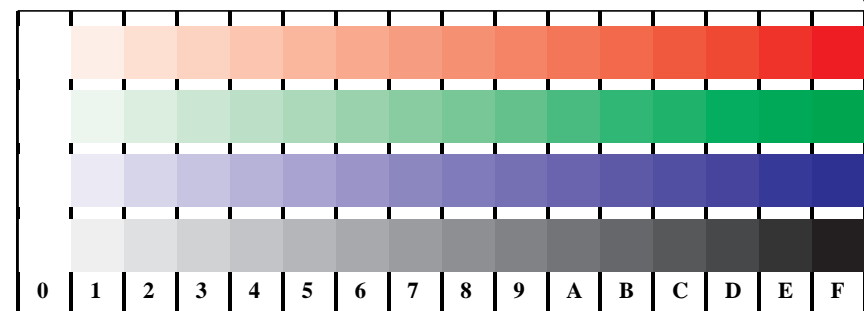
Picture B5w: Script and Landolt-rings N, M, C and Y; PS operator *cmY0* setcmykcolor* (only)



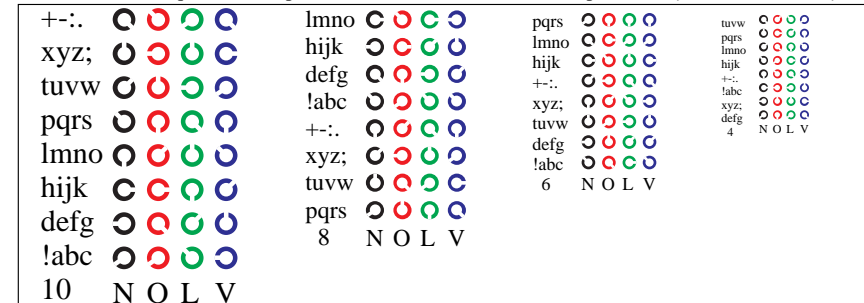
Picture B6w: Landolt-rings W-C and W-M; PS operator *cmY0* setcmykcolor* (only)



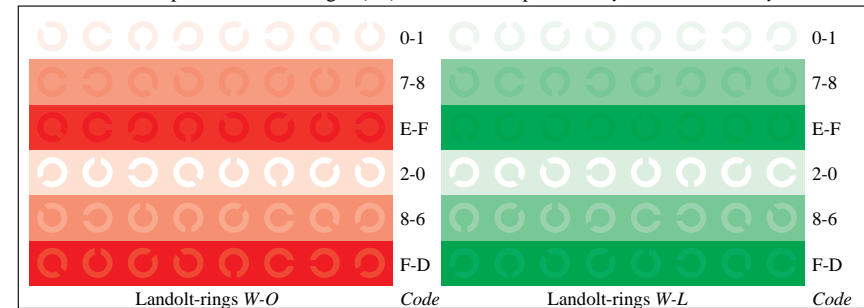
Picture B7w: Landolt-rings W-Y and W-N; PS operator *cmY0* setcmykcolor* (only)



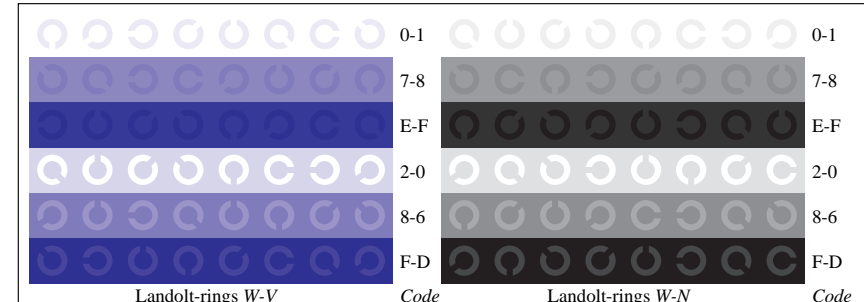
Picture D4w: 16 equidistant steps W-O, W-L, W-V and W-N; PS operator *cmY0*/000n* setcmykcolor*



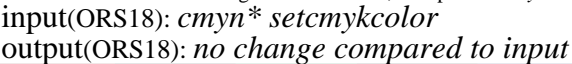
Picture D5w: Script and Landolt-rings N, O, L and V; PS operator *cmY0*/000n* setcmykcolor*



Picture D6w: Landolt-rings W-O and W-L; PS operator *cmY0*/000n* setcmykcolor*



Picture D7w: Landolt-rings W-V and W-N; PS operator *cmY0*/000n* setcmykcolor*



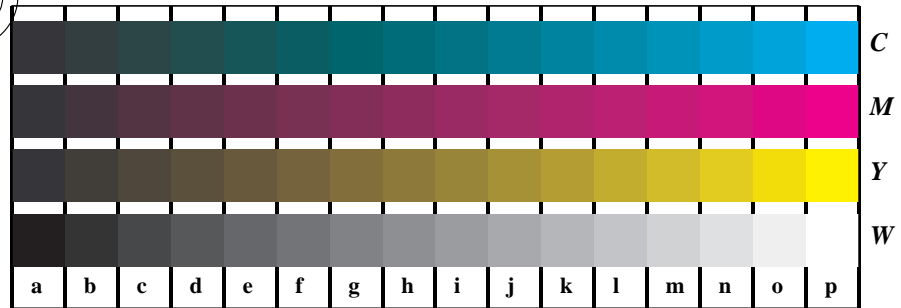
See for similar files: <http://www.ps.bam.de/LE20/LE20.HTM>
 Information and Order: <http://www.ps.bam.de>
 Version 2.0, io=0,0

BAM registration: 20030101-LE20/10Q/Q20E15NP.PS.PDF
 application for measurement of monitor (Yr=2.5) and printer output
 BAM material: code=th4ta



See for similar files: <http://www.ps.bam.de/LE20/LE20.HTM>
 Information and Order: <http://www.ps.bam.de>
 Version 2.0, io=0,0

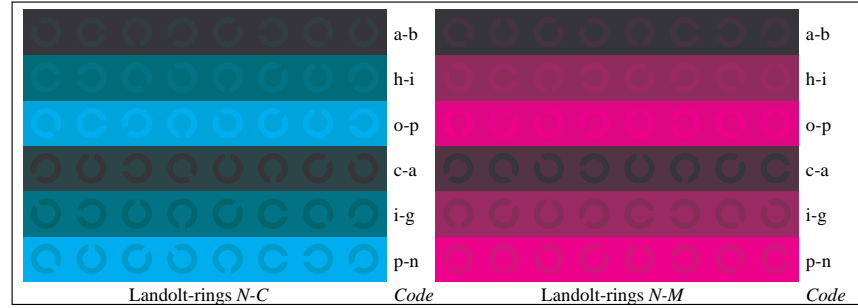
BAM registration: 20030101-LE20/10Q/Q20E25NP.PS.PDF BAM material: code=th4t4
 application for measurement of monitor (Yr=2.5) and printer output



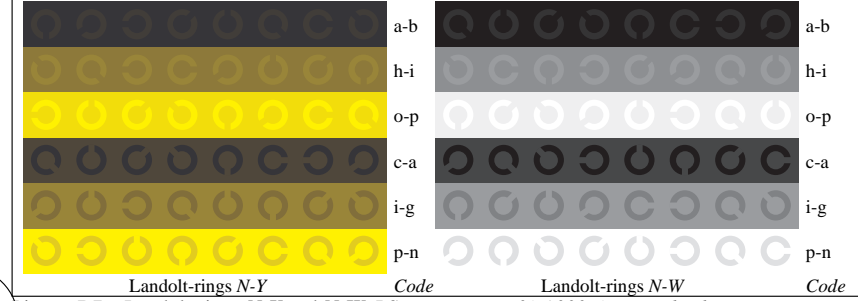
Picture B4n: 16 equidistant steps N-C, N-M, N-Y and N-W; PS operator $cmy0^*/000n^*$ setcmykcolor



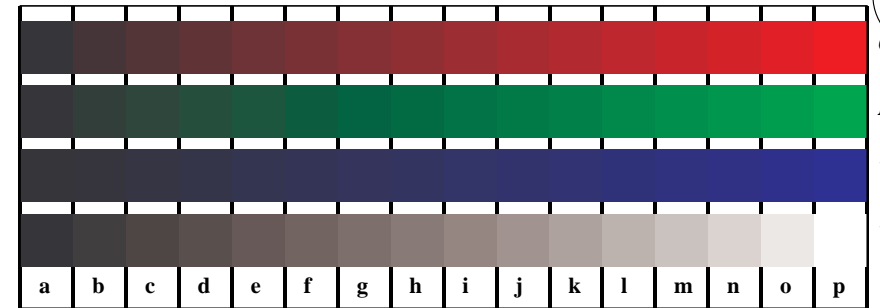
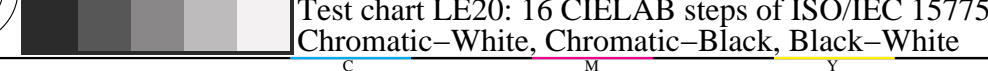
Picture B5n: Script and Landolt-rings W, M, C and Y; PS operator $cmy0^*/000n^*$ setcmykcolor



Picture B6n: Landolt-rings N-C and N-M; Use of PS operator $cmy0^*/000n^*$ setcmykcolor



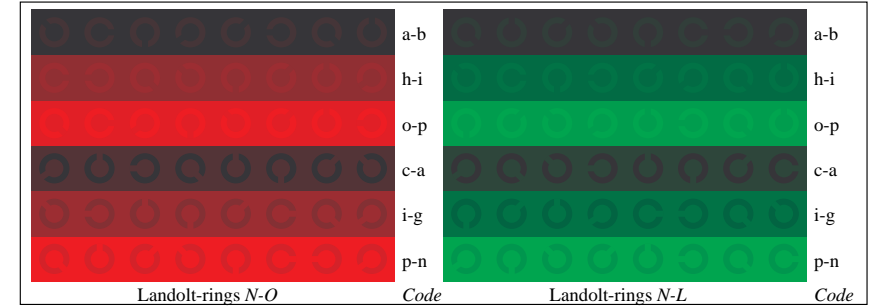
Picture B7n: Landolt-rings N-Y and N-W; PS operator $cmy0^*/000n^*$ setcmykcolor



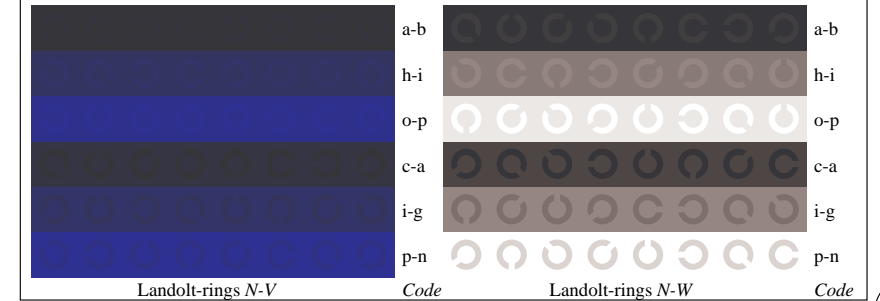
Picture D4n: 16 equidistant steps N-O, N-L, N-V and N-W; PS operator $cmy0^*$ setcmykcolor (only)



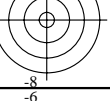
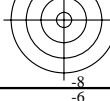
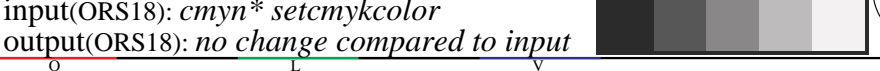
Picture D5n: Script and Landolt-rings W, O, L and V; PS operator $cmy0^*$ setcmykcolor (only)

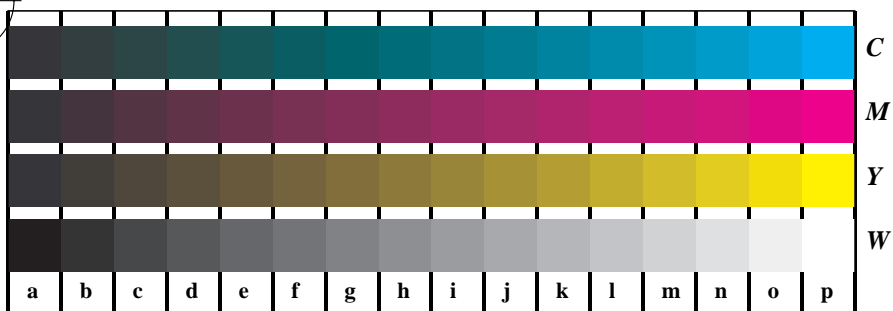


Picture D6n: Landolt-rings N-O and N-L; Use of PS operator $cmy0^*$ setcmykcolor (only)



Picture D7n: Landolt-rings N-V and N-W; PS operator $cmy0^*$ setcmykcolor (only)

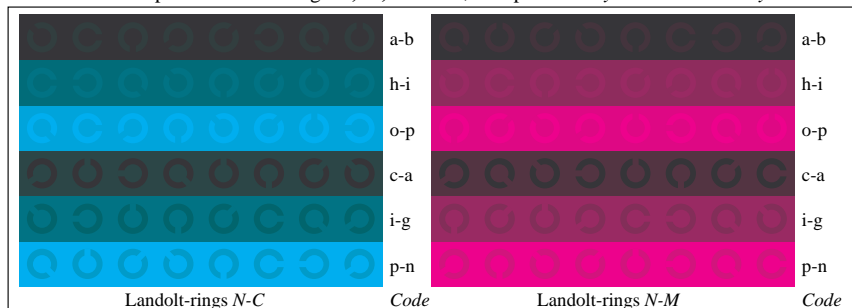




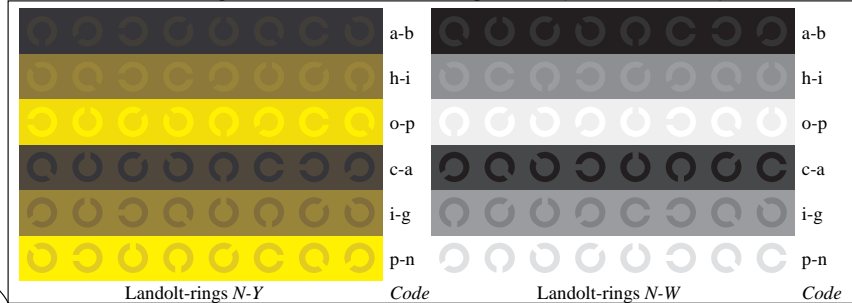
Picture B4n: 16 equidistant steps *N-C*, *N-M*, *N-Y* and *N-W*; PS operator *cmy0*/000n* setcmykcolor*



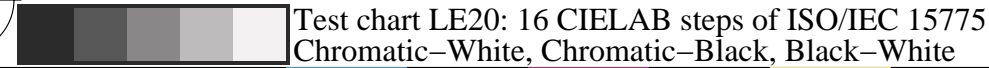
Picture B5n: Script and Landolt-rings *W*, *M*, *C* and *Y*; PS operator *cmy0*/000n* setcmykcolor*



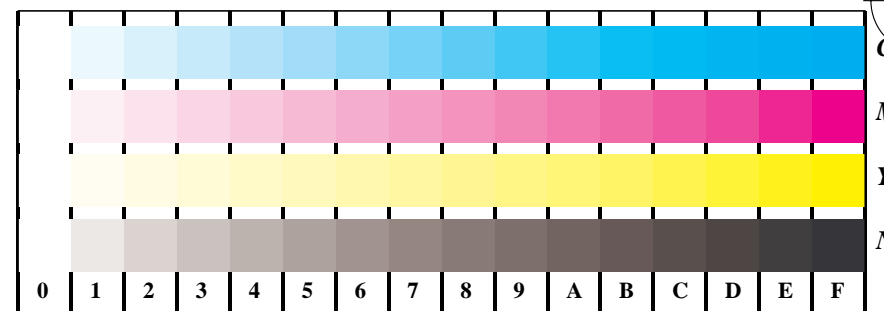
Picture B6n: Landolt-rings *N-C* and *N-M*; Use of PS operator *cmy0*/000n* setcmykcolor*



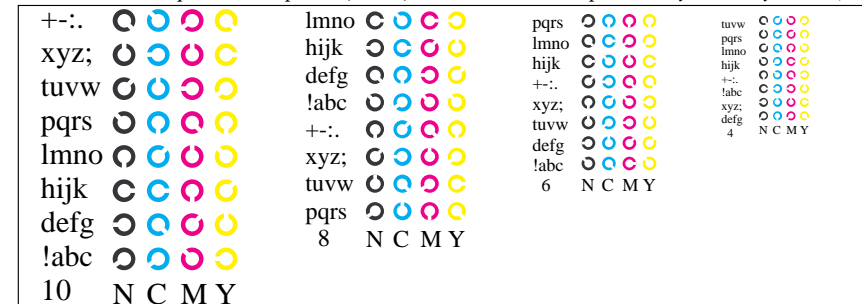
Picture B7n: Landolt-rings *N-Y* and *N-W*; PS operator *cmy0*/000n* setcmykcolor*



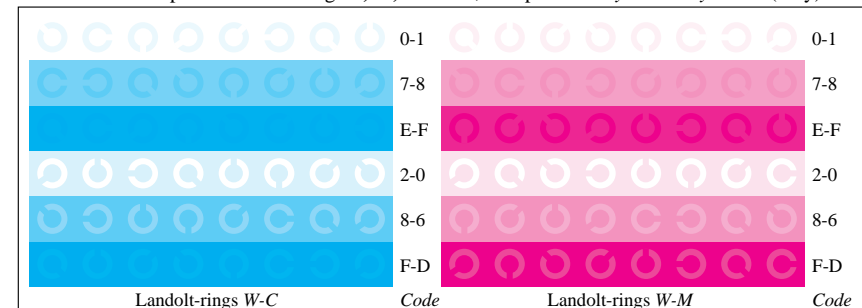
Test chart LE20: 16 CIELAB steps of ISO/IEC 15775
 Chromatic-White, Chromatic-Black, Black-White



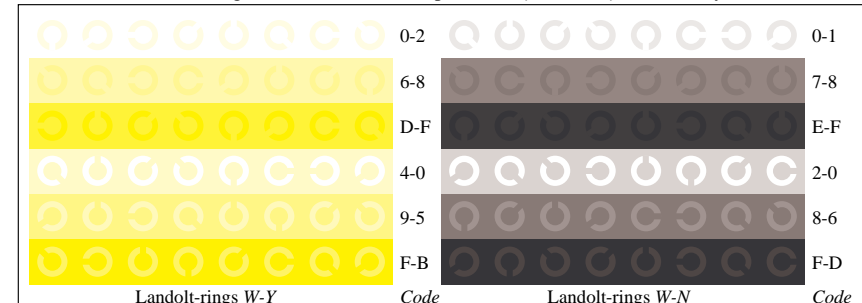
Picture B4w: 16 equidistant steps *W-C*, *W-M*, *W-Y* and *W-N*; PS operator *cmy0* setcmykcolor* (only)



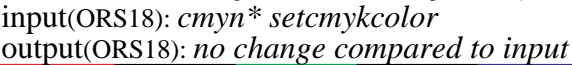
Picture B5w: Script and Landolt-rings *N*, *M*, *C* and *Y*; PS operator *cmy0* setcmykcolor* (only)



Picture B6w: Landolt-rings *W-C* and *W-M*; PS operator *cmy0* setcmykcolor* (only)



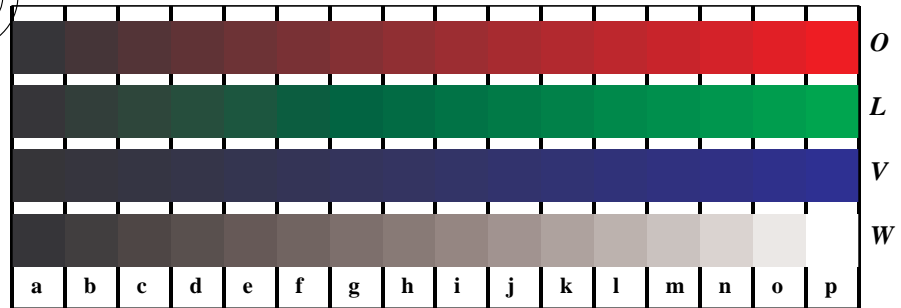
Picture B7w: Landolt-rings *W-Y* and *W-N*; PS operator *cmy0* setcmykcolor* (only)



input(ORS18): *cmy0n* setcmykcolor*
 output(ORS18): no change compared to input

See for similar files: <http://www.ps.bam.de/LE20/LE20.HTM>
 Information and Order: <http://www.ps.bam.de>
 Version 2.0, io=0,0

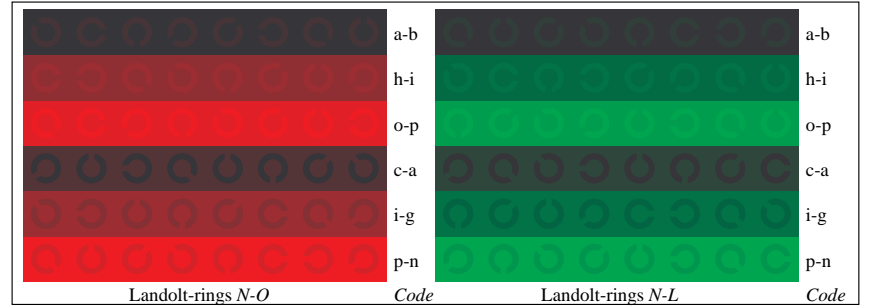
BAM registration: 20030101-LE20/10Q/Q20E45NP.PS.PDF
 application for measurement of monitor (Yr=2.5) and printer output
 BAM material: code=th4ta



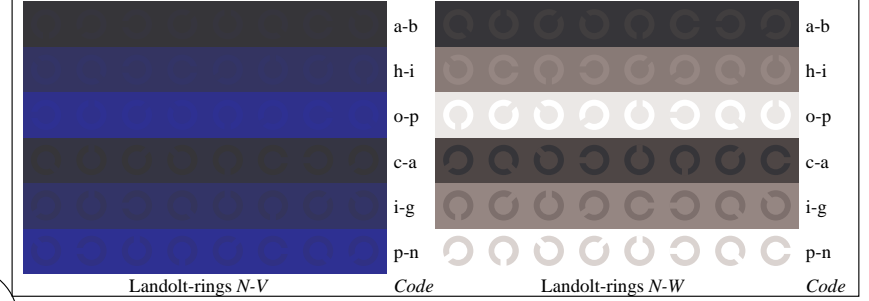
Picture D4n: 16 equidistant steps *N-O, N-L, N-V* and *N-W*; PS operator *cmY0* setcmykcolor* (only)



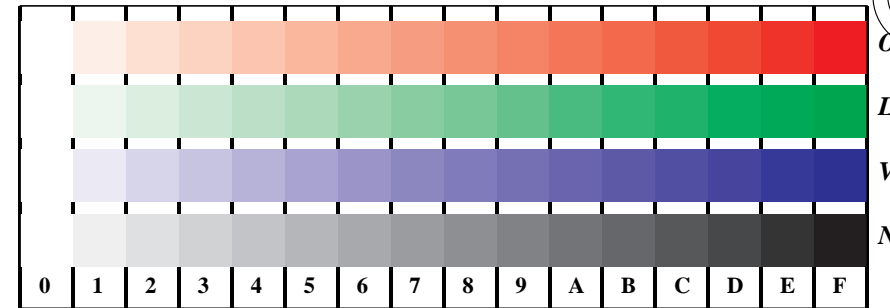
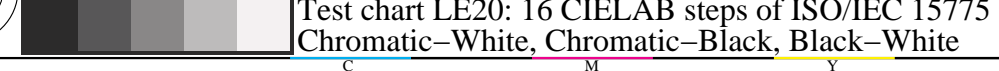
Picture D5n: Script and Landolt-rings *W, O, L* and *V*; PS operator *cmY0* setcmykcolor* (only)



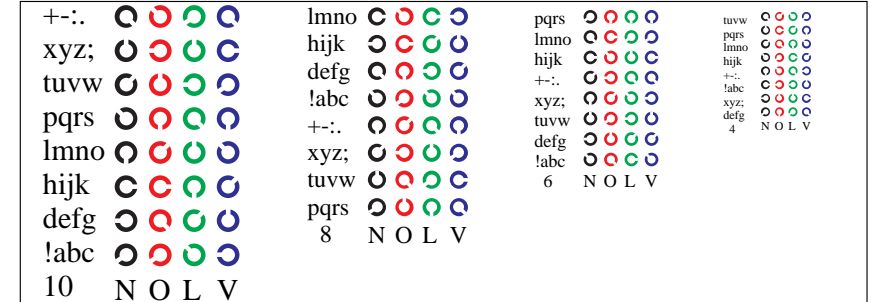
Picture D6n: Landolt-rings *N-O* and *N-L*; Use of PS operator *cmY0* setcmykcolor* (only)



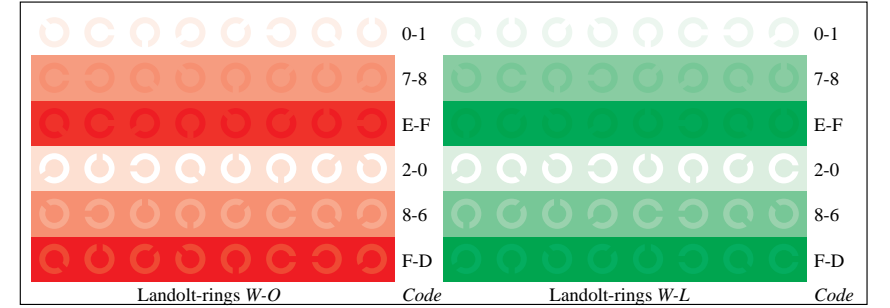
Picture D7n: Landolt-rings *N-V* and *N-W*; PS operator *cmY0* setcmykcolor* (only)



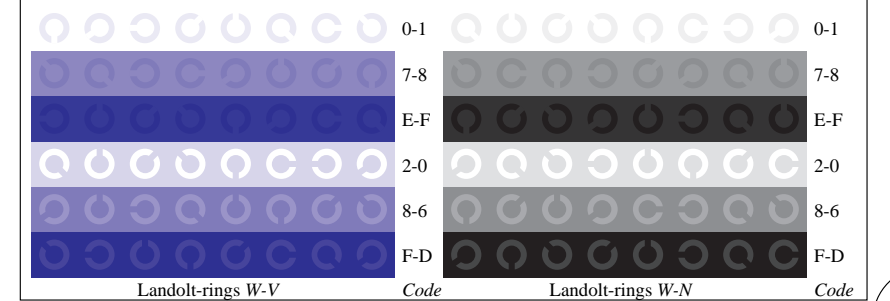
Picture D4w: 16 equidistant steps *W-O, W-L, W-V* and *W-N*; PS operator *cmY0*/000n* setcmykcolor*



Picture D5w: Script and Landolt-rings *N, O, L* and *V*; PS operator *cmY0*/000n* setcmykcolor*



Picture D6w: Landolt-rings *W-O* and *W-L*; PS operator *cmY0*/000n* setcmykcolor*



Picture D7w: Landolt-rings *W-V* and *W-N*; PS operator *cmY0*/000n* setcmykcolor*

