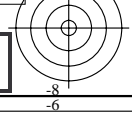
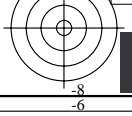
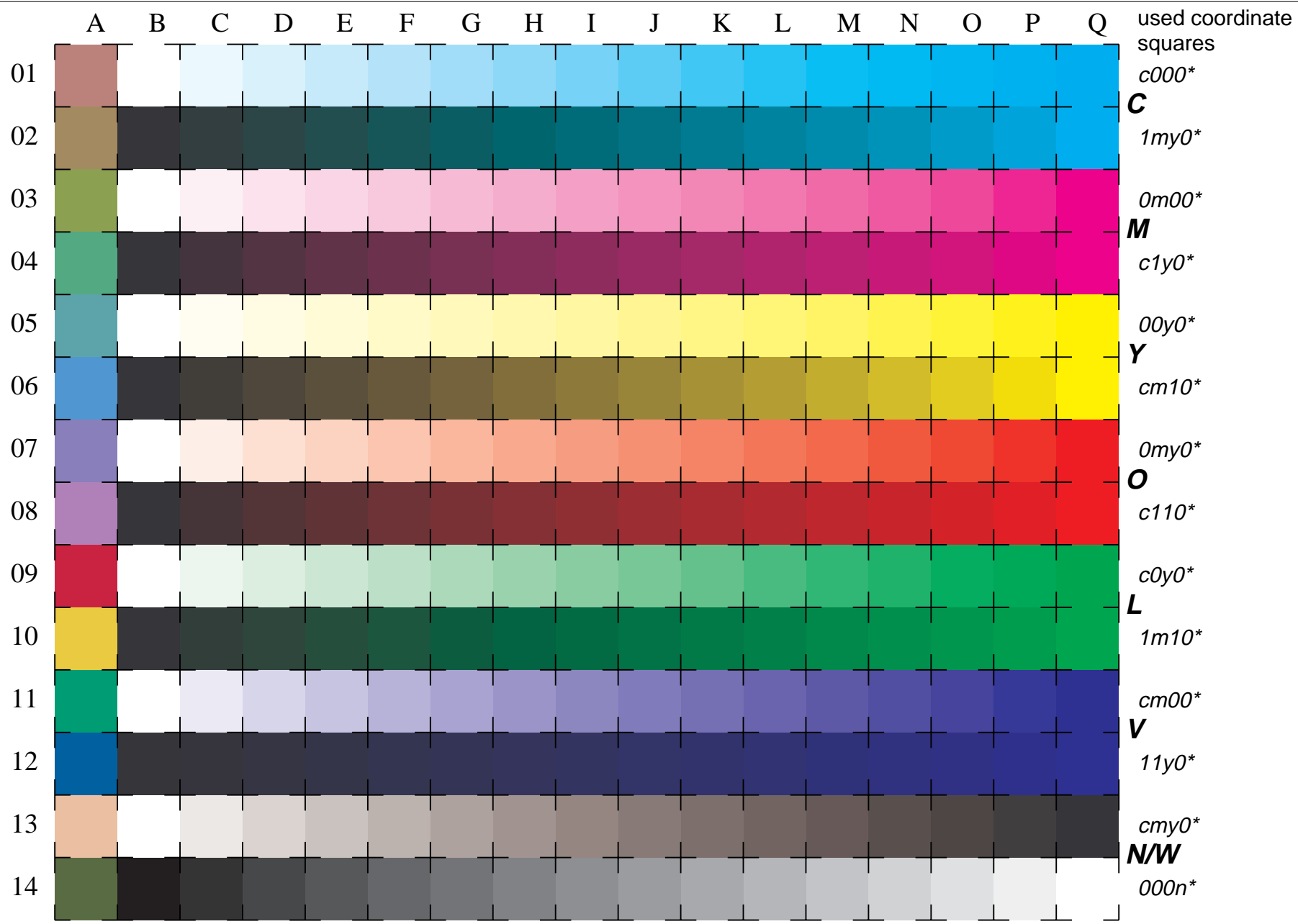


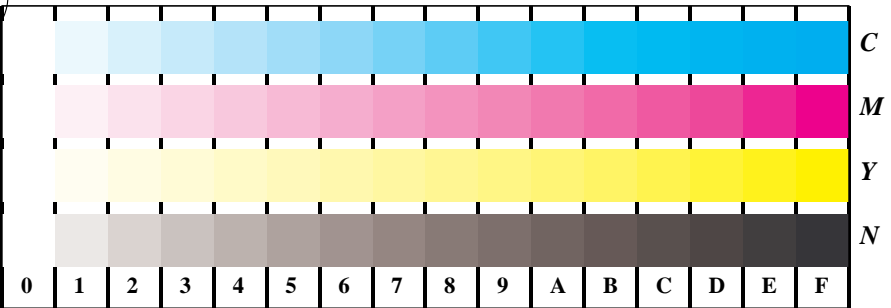
See for similar files: <http://www.ps.bam.de/LE20/LE20.HTM>
 Information and Order: <http://www.ps.bam.de> Version 2.0, io=0,0?

BAM registration: 20030101-LE20/10S/S20E01SP.PS/.PDF BAM material: code=th4ta
 application for measurement of monitor (Yr=2.5) and printer output

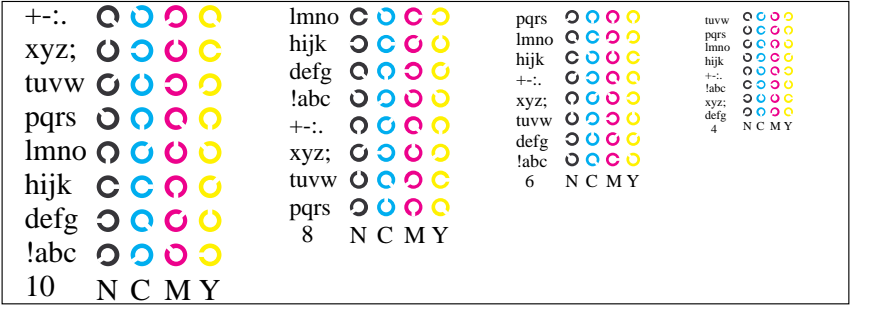


See for similar files: <http://www.ps.bam.de/LE20/LE20.HTM>
 Information and Order: <http://www.ps.bam.de> Version 2.0, io=0,0?

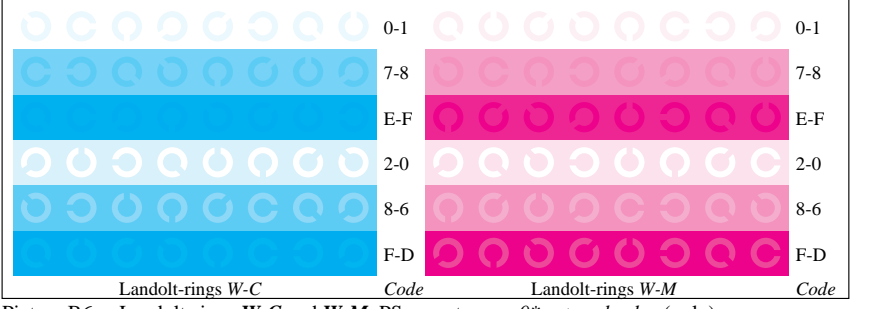
BAM registration: 20030101-LE20/10S/S20E11SP.PS.PDF
 application for measurement of monitor (Yr=2.5) and printer output
 BAM material: code=th4ta



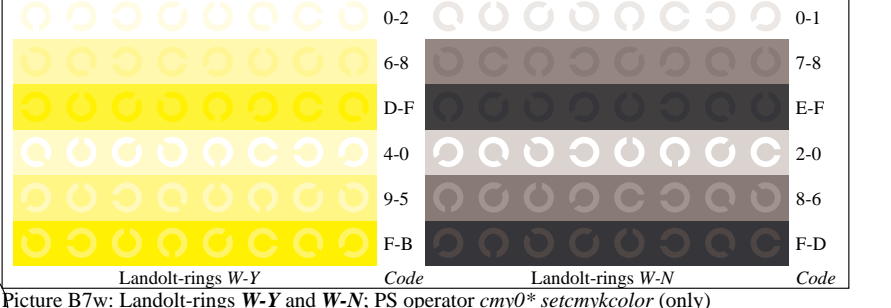
Picture B4w: 16 equidistant steps W-C, W-M, W-Y and W-N; PS operator *cmY0* setcmykcolor* (only)



Picture B5w: Script and Landolt-rings N, M, C and Y; PS operator *cmY0* setcmykcolor* (only)

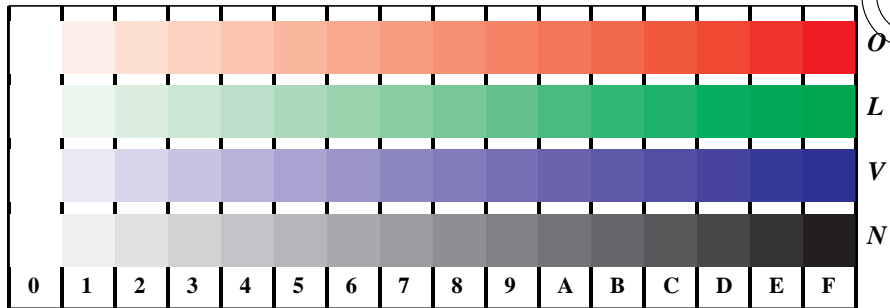


Picture B6w: Landolt-rings W-C and W-M; PS operator *cmY0* setcmykcolor* (only)

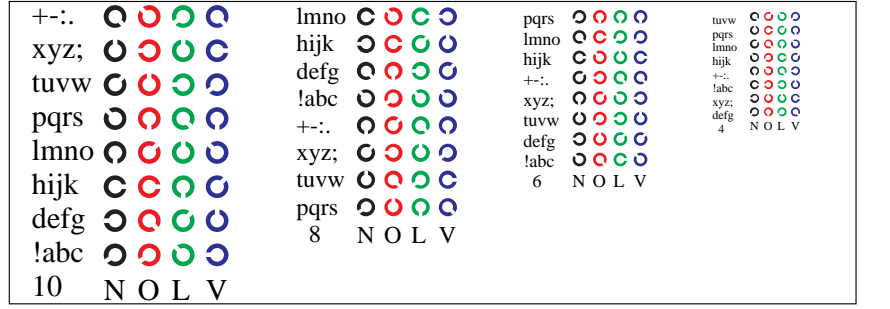


Picture B7w: Landolt-rings W-Y and W-N; PS operator *cmY0* setcmykcolor* (only)

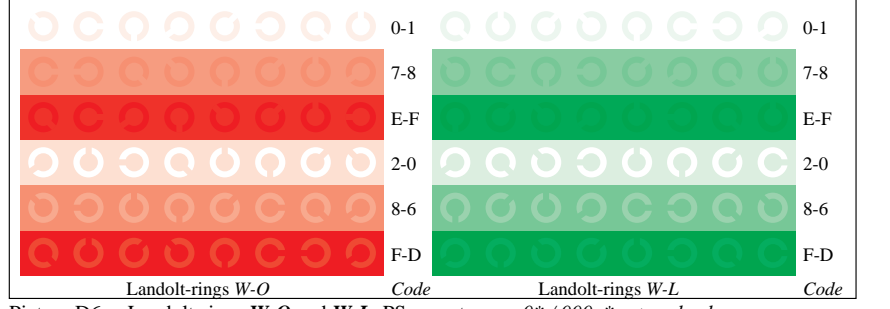
Test chart LE20: 16 CIELAB steps of ISO/IEC 15775
 Chromatic-White, Chromatic-Black, Black-White



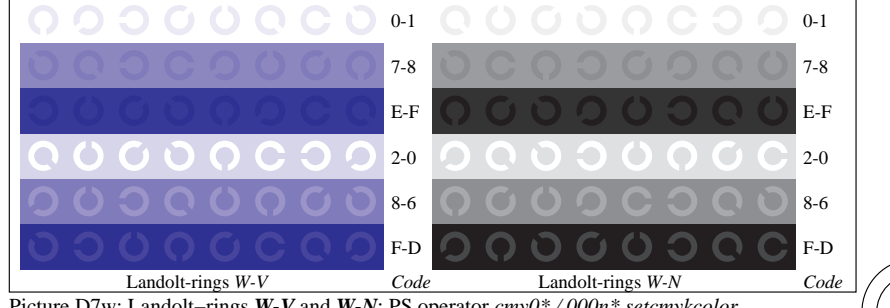
Picture D4w: 16 equidistant steps W-O, W-L, W-V and W-N; PS operator *cmY0*/000n* setcmykcolor*



Picture D5w: Script and Landolt-rings N, O, L and V; PS operator *cmY0*/000n* setcmykcolor*



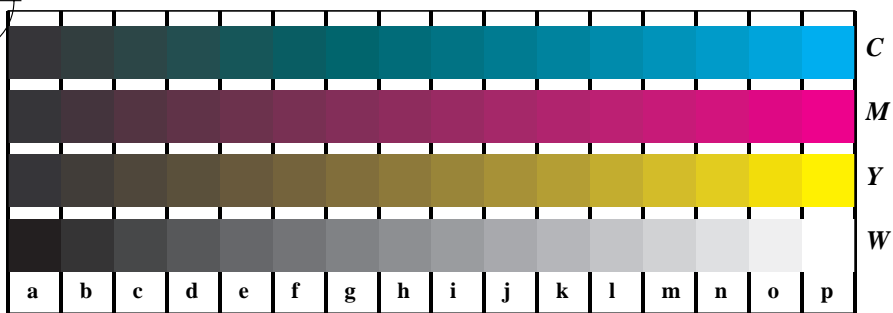
Picture D6w: Landolt-rings W-O and W-L; PS operator *cmY0*/000n* setcmykcolor*



Picture D7w: Landolt-rings W-V and W-N; PS operator *cmY0*/000n* setcmykcolor*

input(ORS18): *cmYn* setcmykcolor*
 output(ORS18): Startup (S) data dependend

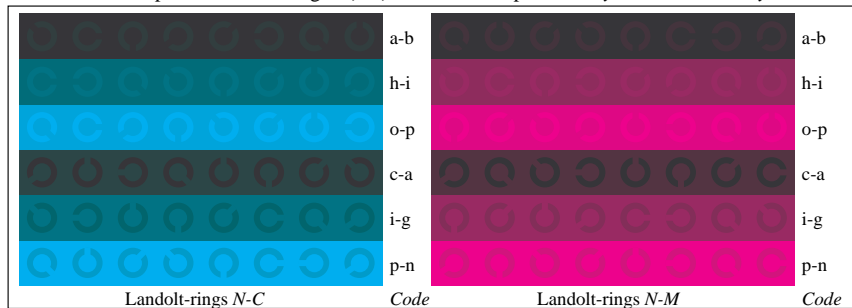




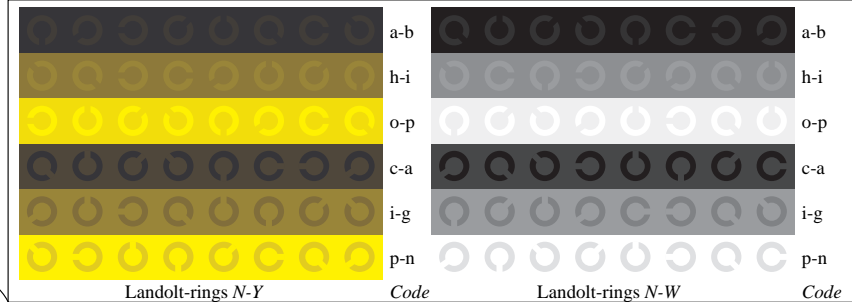
Picture B4n: 16 equidistant steps *N-C*, *N-M*, *N-Y* and *N-W*; PS operator *cmY0*/000n* setcmykcolor*



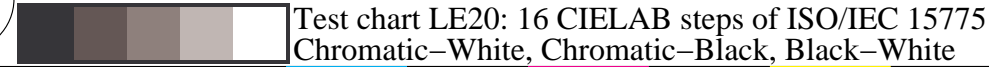
Picture B5n: Script and Landolt-rings *W*, *M*, *C* and *Y*; PS operator *cmY0*/000n* setcmykcolor*



Picture B6n: Landolt-rings *N-C* and *N-M*; Use of PS operator *cmY0*/000n* setcmykcolor*



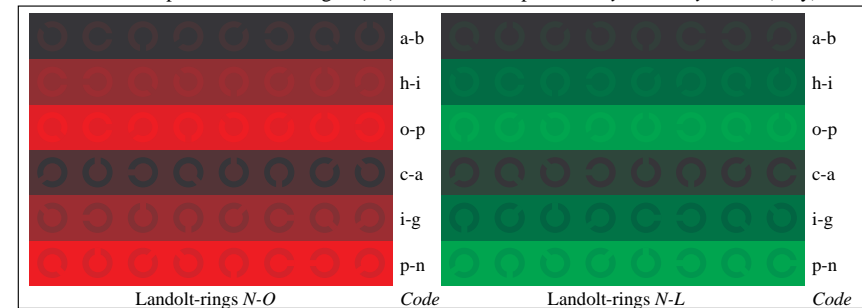
Picture B7n: Landolt-rings *N-Y* and *N-W*; PS operator *cmY0*/000n* setcmykcolor*



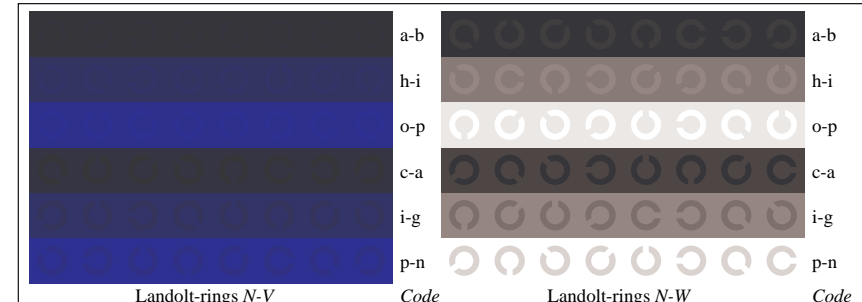
Picture D4n: 16 equidistant steps *N-O*, *N-L*, *N-V* and *N-W*; PS operator *cmY0* setcmykcolor* (only)



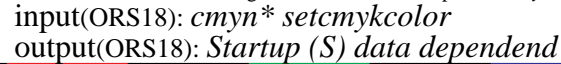
Picture D5n: Script and Landolt-rings *W*, *O*, *L* and *V*; PS operator *cmY0* setcmykcolor* (only)



Picture D6n: Landolt-rings *N-O* and *N-L*; Use of PS operator *cmY0* setcmykcolor* (only)



Picture D7n: Landolt-rings *N-V* and *N-W*; PS operator *cmY0* setcmykcolor* (only)

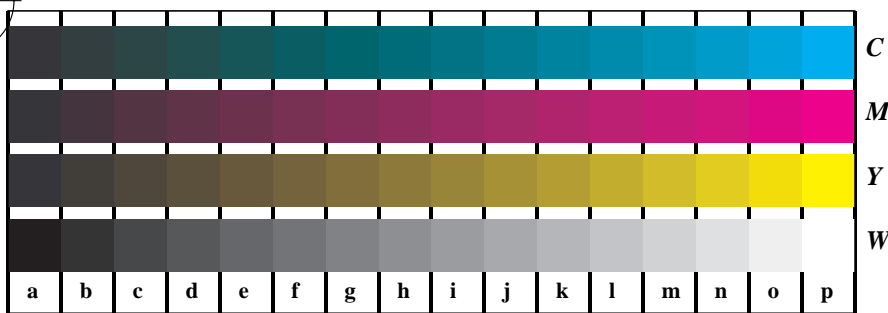


See for similar files: <http://www.ps.bam.de/LE20/LE20.HTM>
 Information and Order: <http://www.ps.bam.de>
 Version 2.0, io=0,0?

BAM registration: 20030101-LE20/10S/S20E21SP.PS.PDF
 application for measurement of monitor (Yr=2.5) and printer output
 BAM material: code=th4ta

See for similar files: <http://www.ps.bam.de/LE20/LE20.HTM>
 Information and Order: <http://www.ps.bam.de>
 Version 2.0, io=0,0?

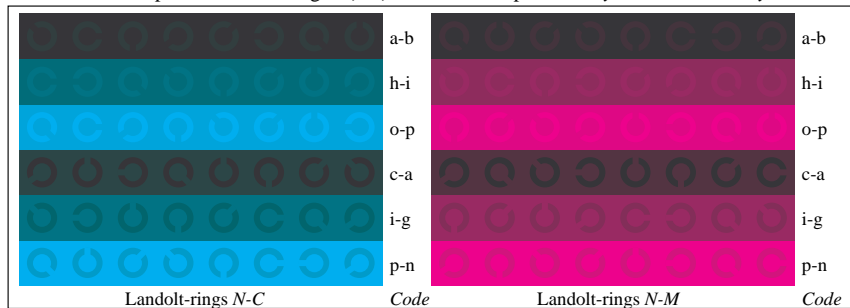
BAM registration: 20030101-LE20/10S/S20E31SP.PS/.PDF
 application for measurement of monitor (Yr=2.5) and printer output
 BAM material: code=th4t4a



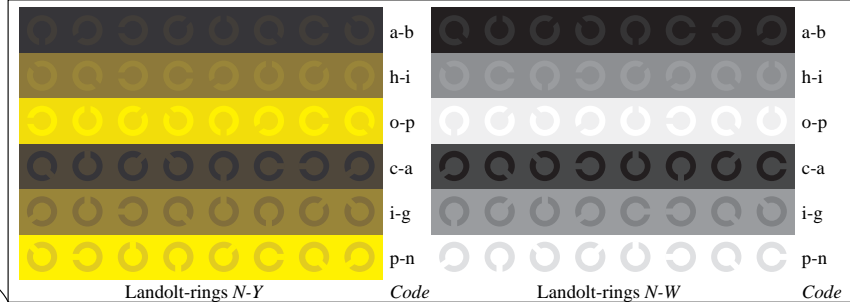
Picture B4n: 16 equidistant steps *N-C*, *N-M*, *N-Y* and *N-W*; PS operator *cmy0*/000n* setcmykcolor*



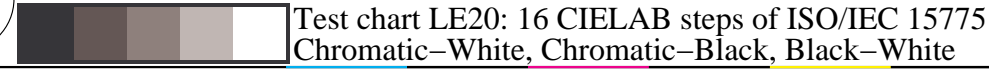
Picture B5n: Script and Landolt-rings *W*, *M*, *C* and *Y*; PS operator *cmy0*/000n* setcmykcolor*



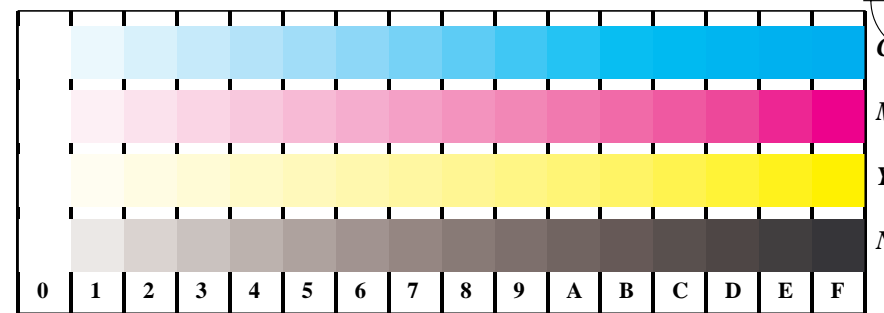
Picture B6n: Landolt-rings *N-C* and *N-M*; Use of PS operator *cmy0*/000n* setcmykcolor*



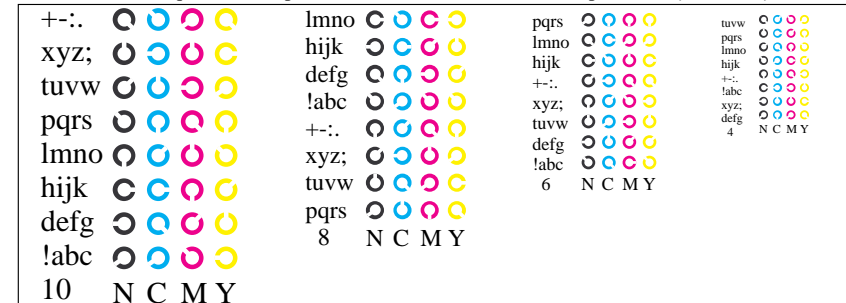
Picture B7n: Landolt-rings *N-Y* and *N-W*; PS operator *cmy0*/000n* setcmykcolor*



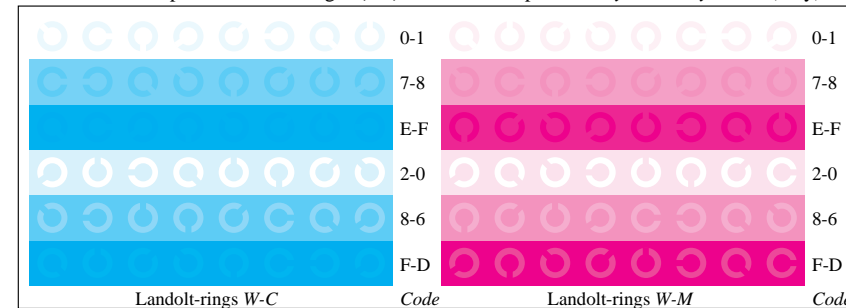
Test chart LE20: 16 CIELAB steps of ISO/IEC 15775
 Chromatic-White, Chromatic-Black, Black-White



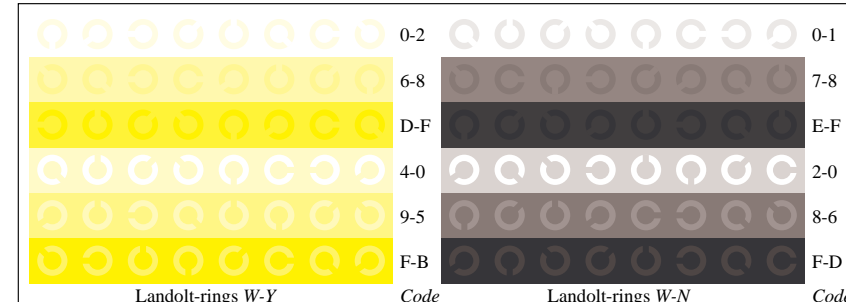
Picture B4w: 16 equidistant steps *W-C*, *W-M*, *W-Y* and *W-N*; PS operator *cmy0* setcmykcolor* (only)



Picture B5w: Script and Landolt-rings *N*, *M*, *C* and *Y*; PS operator *cmy0* setcmykcolor* (only)



Picture B6w: Landolt-rings *W-C* and *W-M*; PS operator *cmy0* setcmykcolor* (only)

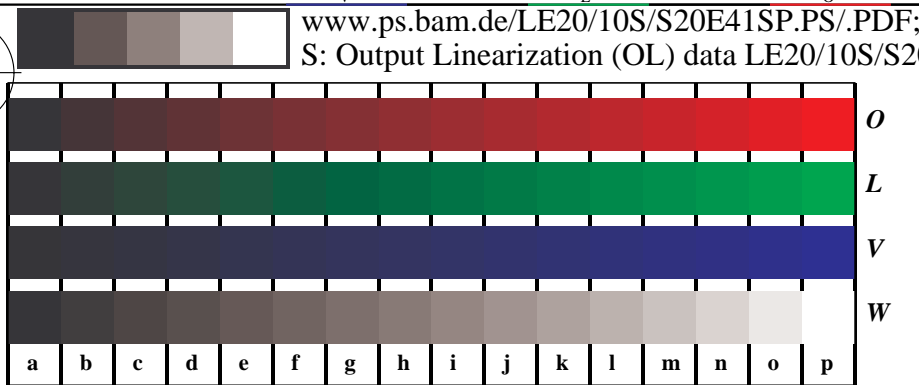


Picture B7w: Landolt-rings *W-Y* and *W-N*; PS operator *cmy0* setcmykcolor* (only)

input(ORS18): *cmy0* setcmykcolor*
 output(ORS18): *Startup (S) data dependend*



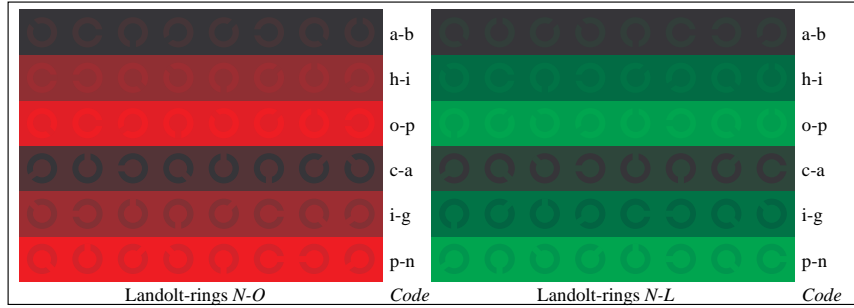
See for similar files: <http://www.ps.bam.de/LE20/LE20.HTM>
 Information and Order: <http://www.ps.bam.de> Version 2.0, io=0,0?



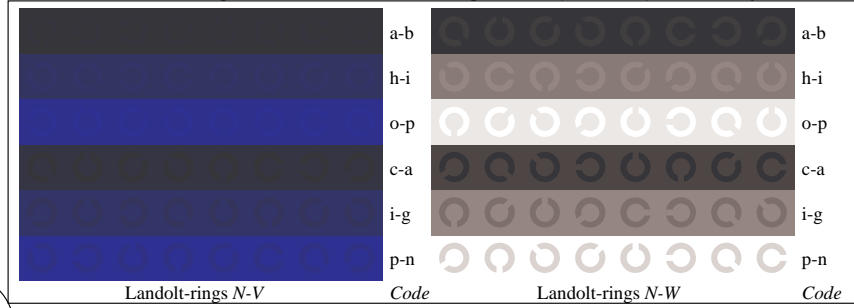
Picture D4n: 16 equidistant steps *N-O, N-L, N-V* and *N-W*; PS operator *cmy0* setcmykcolor* (only)



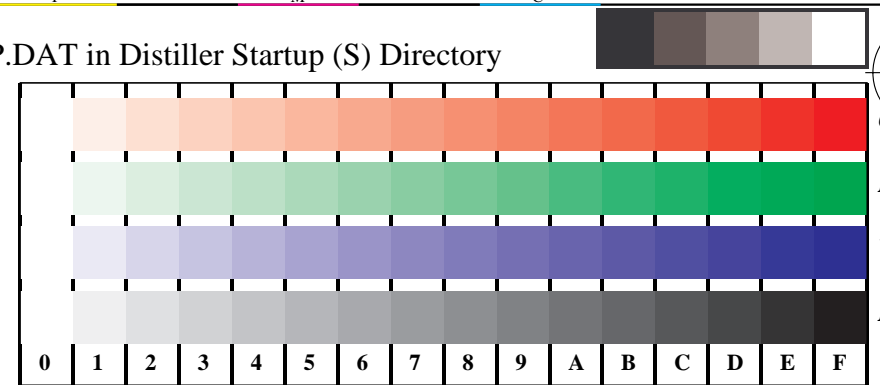
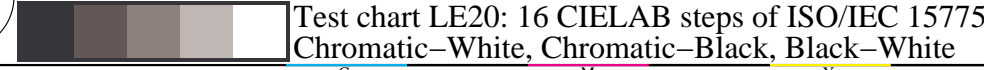
Picture D5n: Script and Landolt-rings *W, O, L* and *V*; PS operator *cmy0* setcmykcolor* (only)



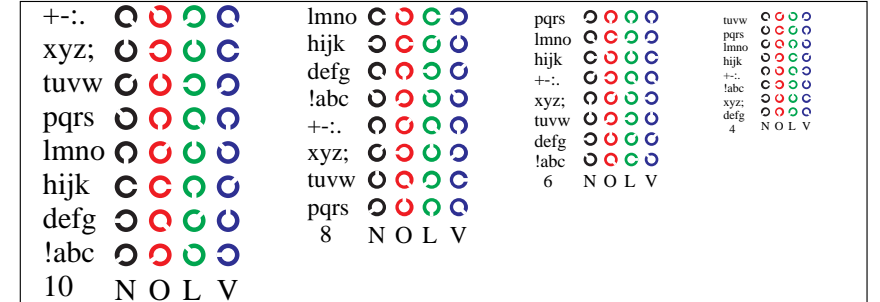
Picture D6n: Landolt-rings *N-O* and *N-L*; Use of PS operator *cmy0* setcmykcolor* (only)



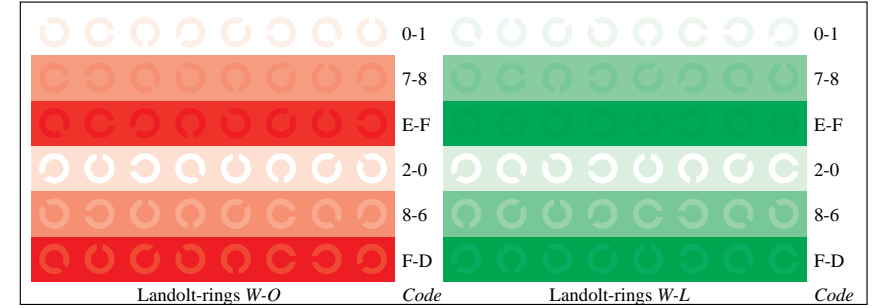
Picture D7n: Landolt-rings *N-V* and *N-W*; PS operator *cmy0* setcmykcolor* (only)



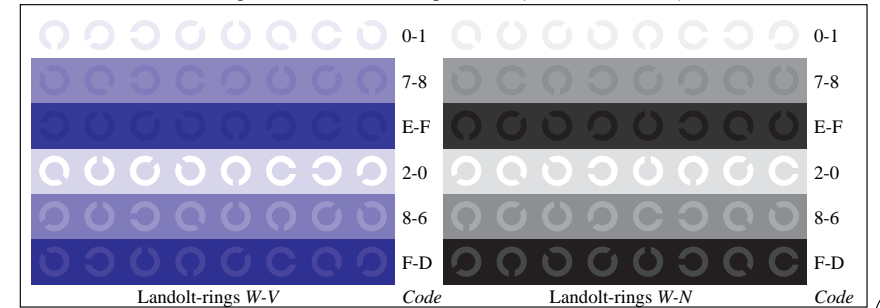
Picture D4w: 16 equidistant steps *W-O, W-L, W-V* and *W-N*; PS operator *cmy0*/000n* setcmykcolor*



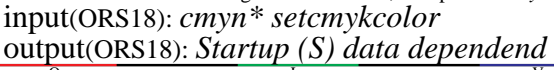
Picture D5w: Script and Landolt-rings *N, O, L* and *V*; PS operator *cmy0*/000n* setcmykcolor*



Picture D6w: Landolt-rings *W-O* and *W-L*; PS operator *cmy0*/000n* setcmykcolor*



Picture D7w: Landolt-rings *W-V* and *W-N*; PS operator *cmy0*/000n* setcmykcolor*



BAM registration: 20030101-LE20/10S/S20E41SP.PS.PDF
 application for measurement of monitor (Yr=2.5) and printer output
 BAM material: code=th4ta