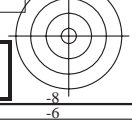
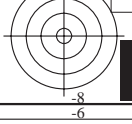
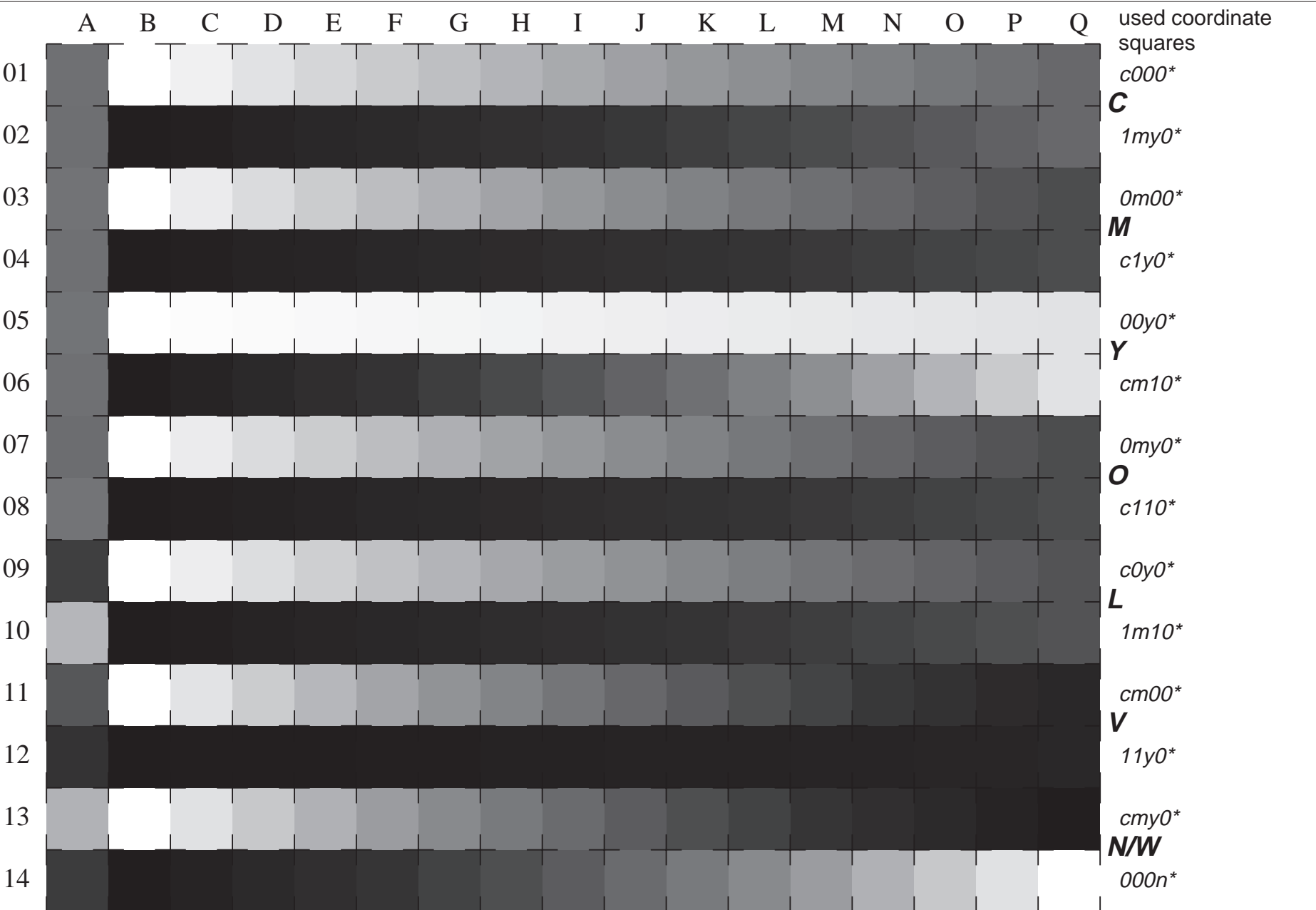


See for similar files: <http://www.ps.bam.de/LE20/LE20.HTM>
 Information and Order: <http://www.ps.bam.de> Version 2.0, io=0,6; iORS; oORS, CIELAB

BAM registration: 20030101-LE20/10S/S20E06FP.PS/.PDF BAM material: code=tha4ta
 application for measurement of monitor (Yr=2.5) and printer output

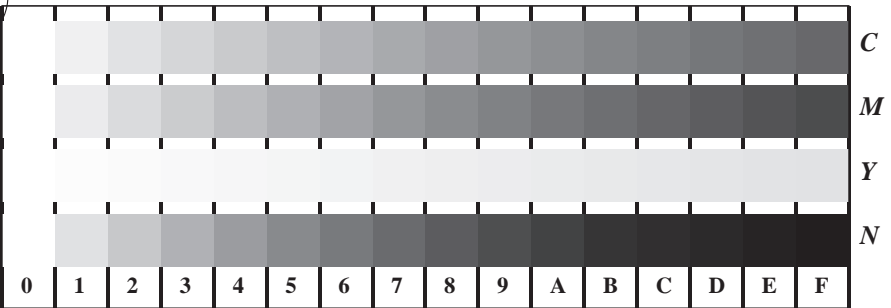


16 equidistant CIELAB steps: C-W, C-N, M-W, M-N, Y-W, Y-N, O-W, O-N, L-W, L-N, V-W, V-N, N-W (*cmy0**), W-N (*000n**) and 14 CIE-test colours (left)

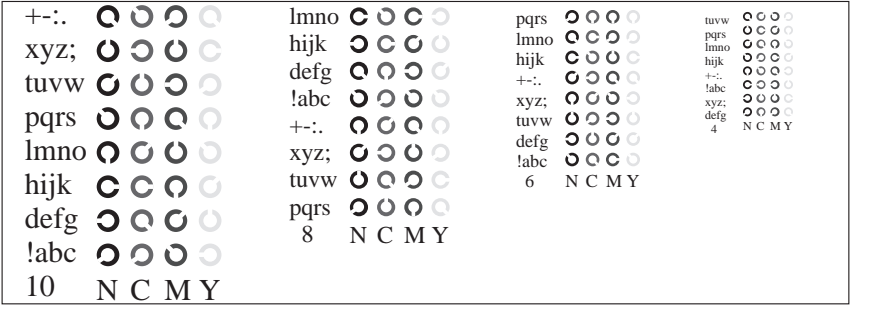
Test chart LE20: 16 CIELAB steps of ISO/IEC 15775 input(ORS18): *cmyn* setcmykcolor*
 Chromatic-White, Chromatic-Black, Black-White output(ORS18): *000n* setcmykcolor*



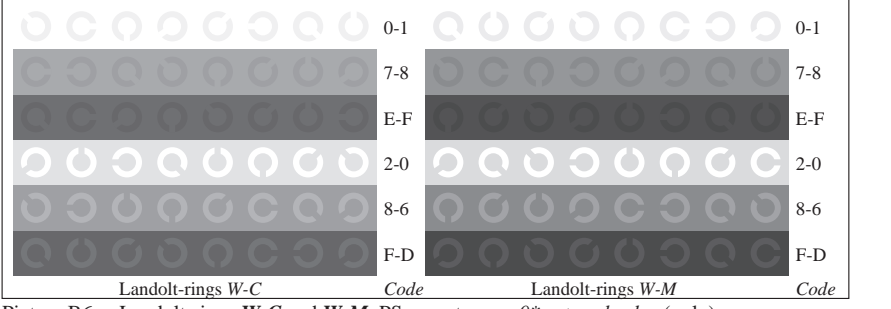
See for similar files: <http://www.ps.bam.de/LE20/LE20.HTM>
 Information and Order: <http://www.ps.bam.de>
 Version 2.0, io=0,6; iORS; oORS, CIELAB



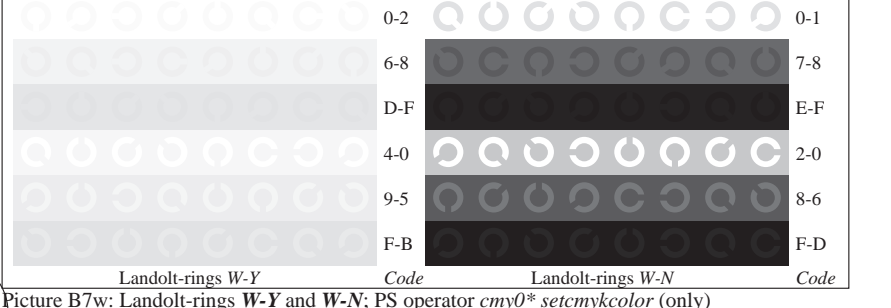
Picture B4w: 16 equidistant steps *W-C*, *W-M*, *W-Y* and *W-N*; PS operator *cmy0* setcmykcolor* (only)



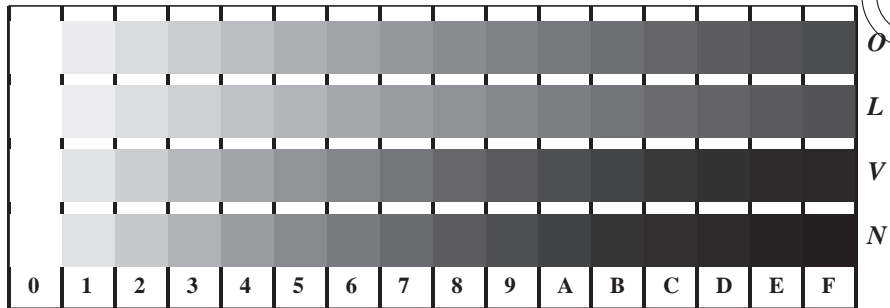
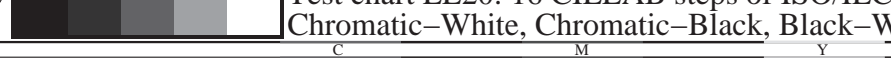
Picture B5w: Script and Landolt-rings *N*, *M*, *C* and *Y*; PS operator *cmy0* setcmykcolor* (only)



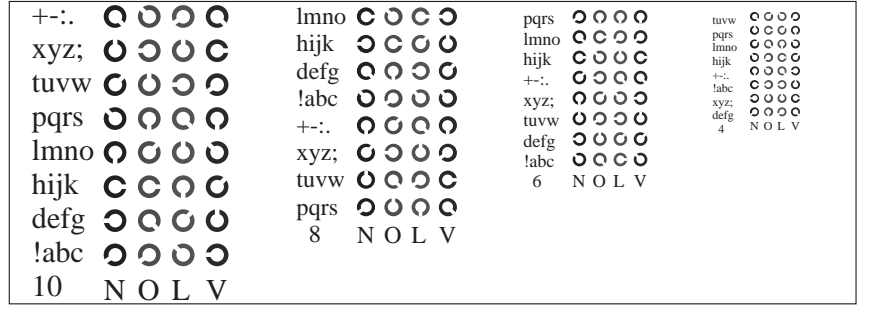
Picture B6w: Landolt-rings *W-C* and *W-M*; PS operator *cmy0* setcmykcolor* (only)



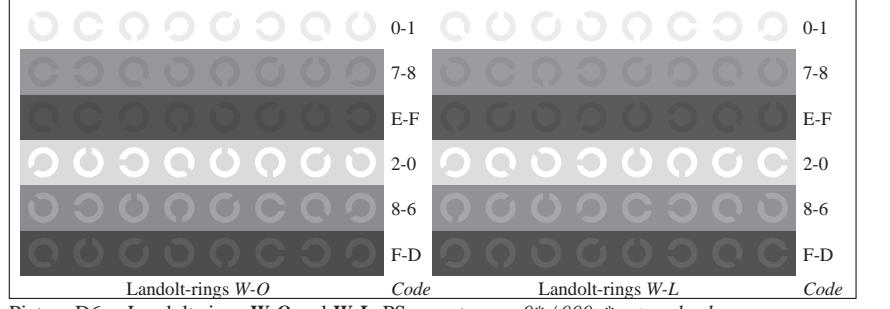
Picture B7w: Landolt-rings *W-Y* and *W-N*; PS operator *cmy0* setcmykcolor* (only)



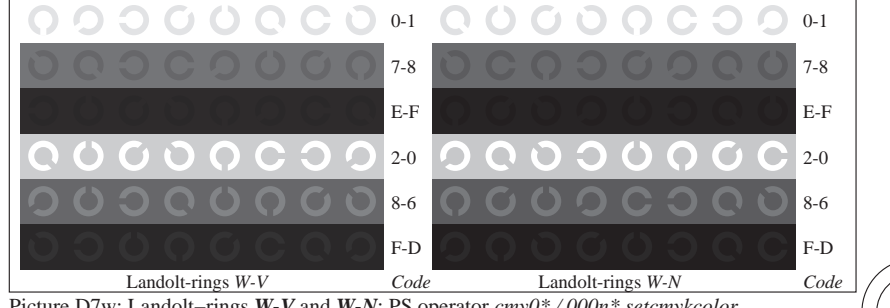
Picture D4w: 16 equidistant steps *W-O*, *W-L*, *W-V* and *W-N*; PS operator *cmy0*/000n* setcmykcolor*



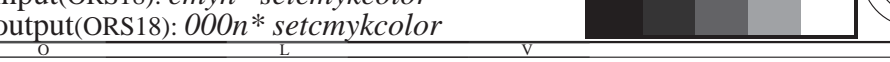
Picture D5w: Script and Landolt-rings *N*, *O*, *L* and *V*; PS operator *cmy0*/000n* setcmykcolor*



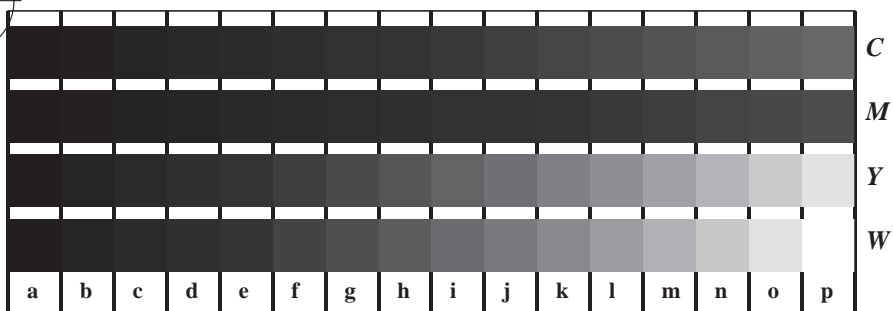
Picture D6w: Landolt-rings *W-O* and *W-L*; PS operator *cmy0*/000n* setcmykcolor*



Picture D7w: Landolt-rings *W-V* and *W-N*; PS operator *cmy0*/000n* setcmykcolor*



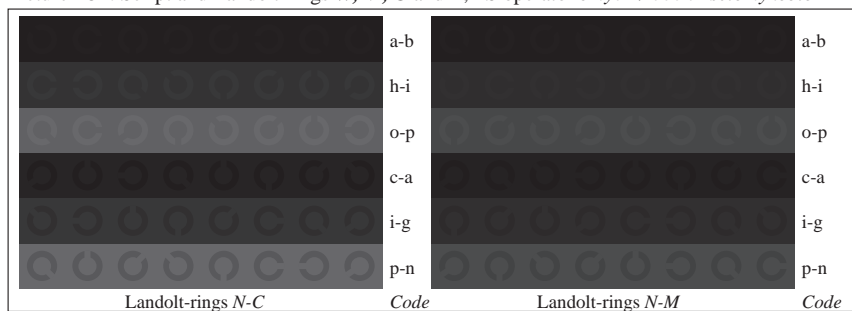
BAM registration: 20030101-LE20/10S/S20E16FP.PS/.PDF
 application for measurement of monitor (Yr=2.5) and printer output
 BAM material: code=th4ta



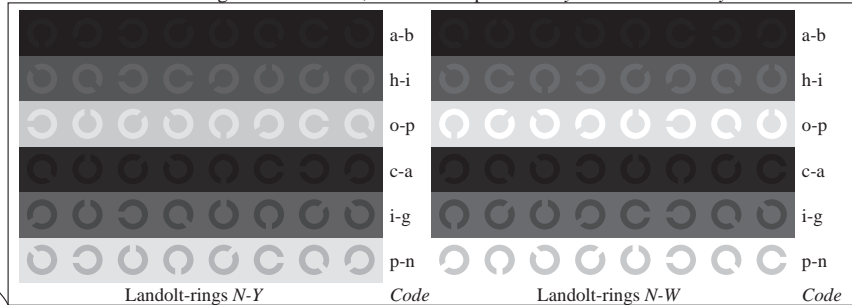
Picture B4n: 16 equidistant steps *N-C, N-M, N-Y* and *N-W*; PS operator *cmy0*/000n* setcmykcolor*



Picture B5n: Script and Landolt-rings *W, M, C* and *Y*; PS operator *cmy0*/000n* setcmykcolor*



Picture B6n: Landolt-rings *N-C* and *N-M*; Use of PS operator *cmy0*/000n* setcmykcolor*



Picture B7n: Landolt-rings *N-Y* and *N-W*; PS operator *cmy0*/000n* setcmykcolor*



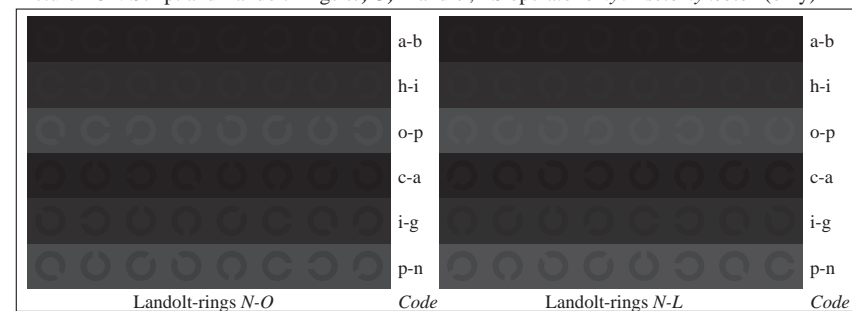
Test chart LE20: 16 CIELAB steps of ISO/IEC 15775
 Chromatic-White, Chromatic-Black, Black-White



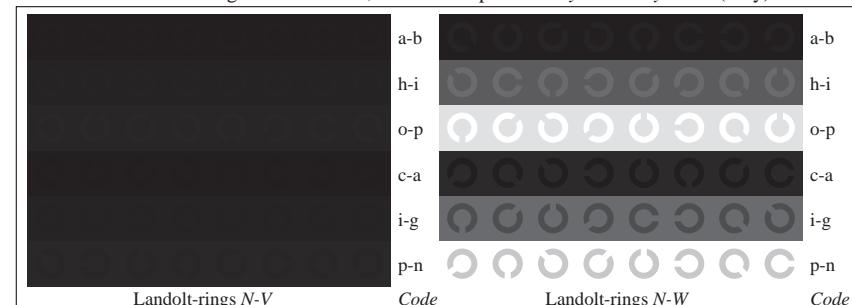
Picture D4n: 16 equidistant steps *N-O, N-L, N-V* and *N-W*; PS operator *cmy0* setcmykcolor (only)*



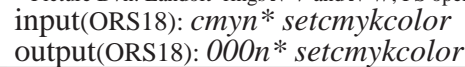
Picture D5n: Script and Landolt-rings *W, O, L* and *V*; PS operator *cmy0* setcmykcolor (only)*



Picture D6n: Landolt-rings *N-O* and *N-L*; Use of PS operator *cmy0* setcmykcolor (only)*



Picture D7n: Landolt-rings *N-V* and *N-W*; PS operator *cmy0* setcmykcolor (only)*



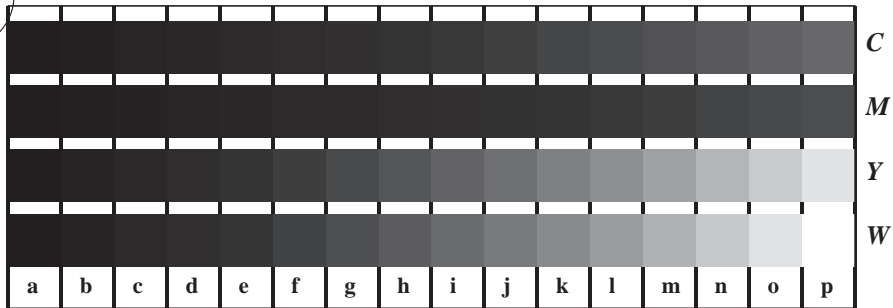
input(ORS18): *cmy0* setcmykcolor*
 output(ORS18): *000n* setcmykcolor*

See for similar files: <http://www.ps.bam.de/LE20/10S/S20E26FP.PS/.PDF>
 Information and Order: <http://www.ps.bam.de>

Version 2.0, io=0,6; iORS; oORS, CIELAB

BAM registration: 20030101-LE20/10S/S20E26FP.PS/.PDF
 application for measurement of monitor (Yr=2.5) and printer output

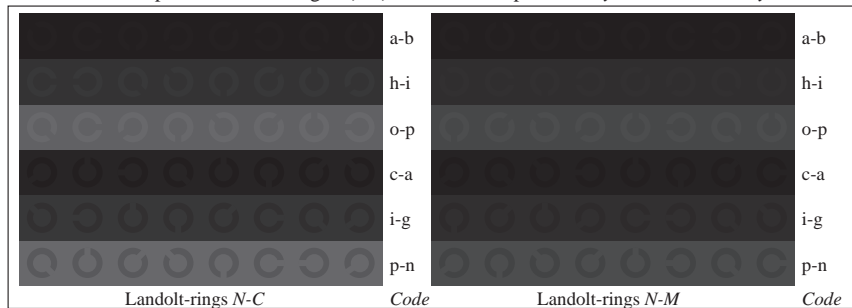
BAM material: code=th4t4



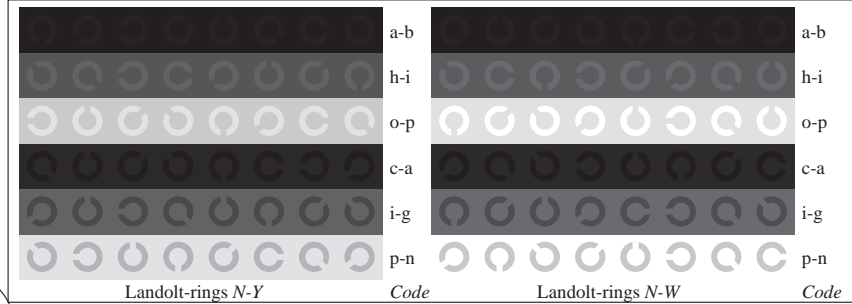
Picture B4n: 16 equidistant steps *N-C*, *N-M*, *N-Y* and *N-W*; PS operator $cmy0^*/000n^*$ setcmykcolor



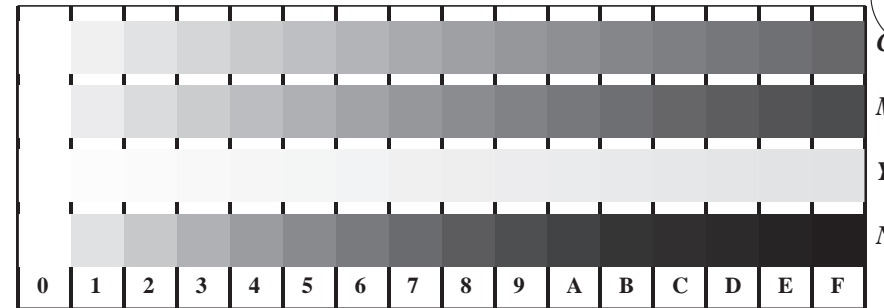
Picture B5n: Script and Landolt-rings *W*, *M*, *C* and *Y*; PS operator $cmy0^*/000n^*$ setcmykcolor



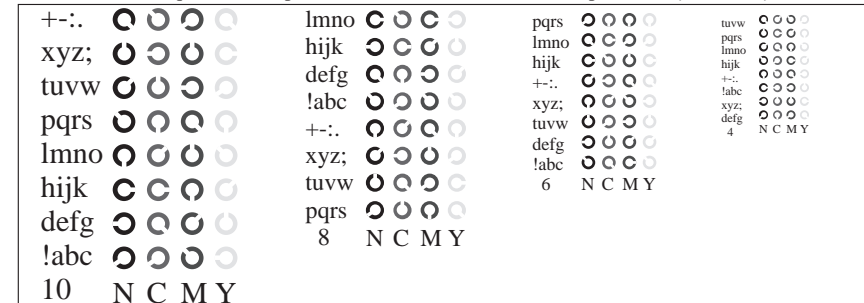
Picture B6n: Landolt-rings *N-C* and *N-M*; Use of PS operator $cmy0^*/000n^*$ setcmykcolor



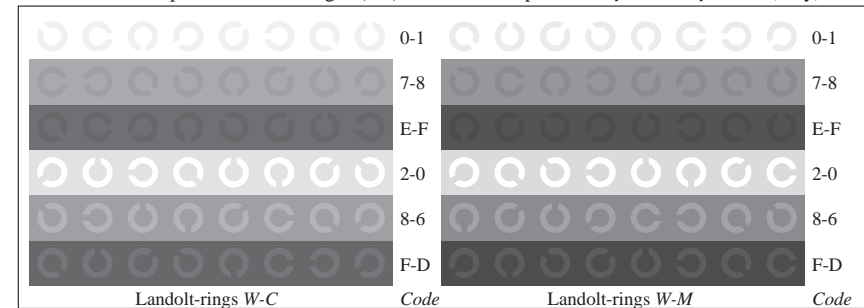
Picture B7n: Landolt-rings *N-Y* and *N-W*; PS operator $cmy0^*/000n^*$ setcmykcolor



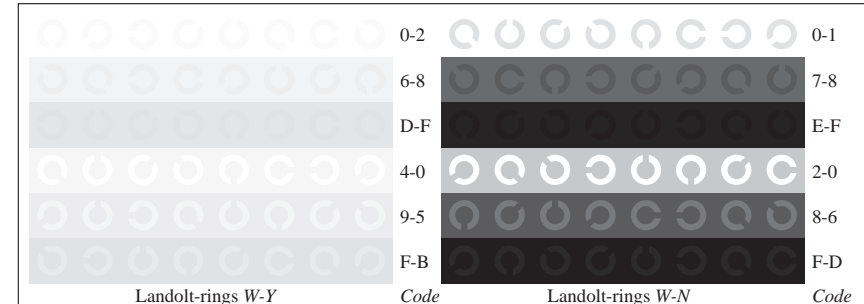
Picture B4w: 16 equidistant steps *W-C*, *W-M*, *W-Y* and *W-N*; PS operator $cmy0^*$ setcmykcolor (only)



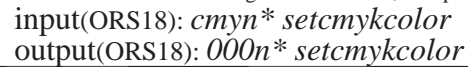
Picture B5w: Script and Landolt-rings *N*, *M*, *C* and *Y*; PS operator $cmy0^*$ setcmykcolor (only)

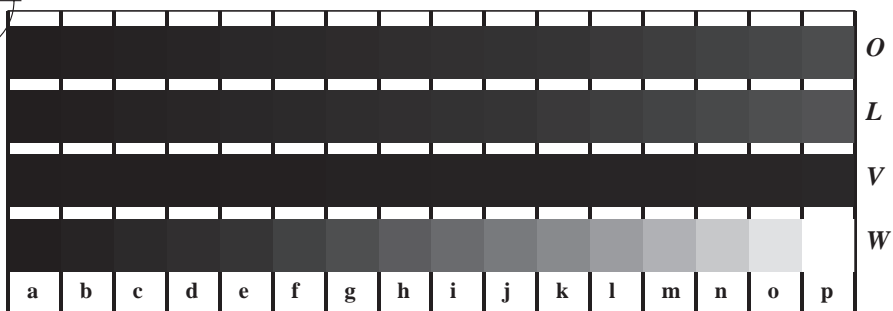


Picture B6w: Landolt-rings *W-C* and *W-M*; PS operator $cmy0^*$ setcmykcolor (only)

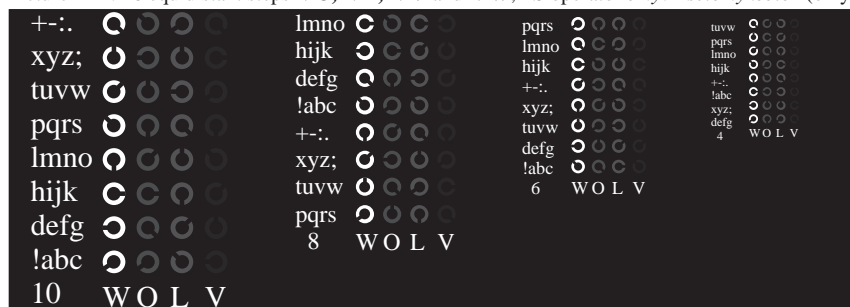


Picture B7w: Landolt-rings *W-Y* and *W-N*; PS operator $cmy0^*$ setcmykcolor (only)

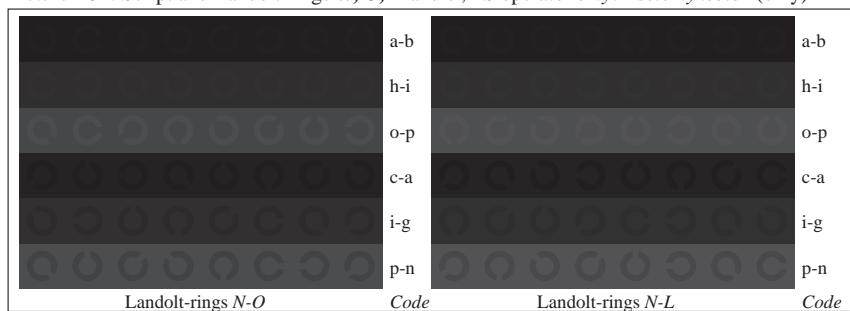




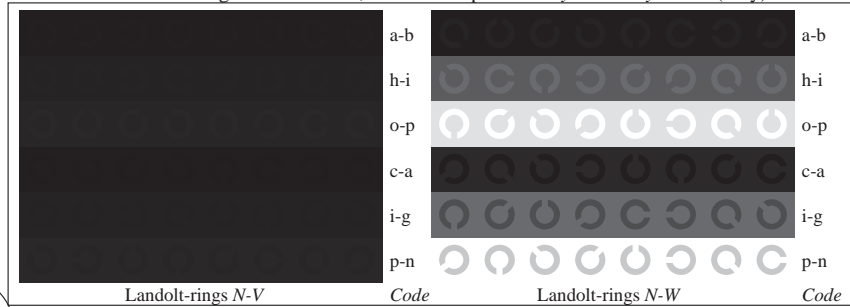
Picture D4n: 16 equidistant steps *N-O*, *N-L*, *N-V* and *N-W*; PS operator *cmy0* setcmykcolor* (only)



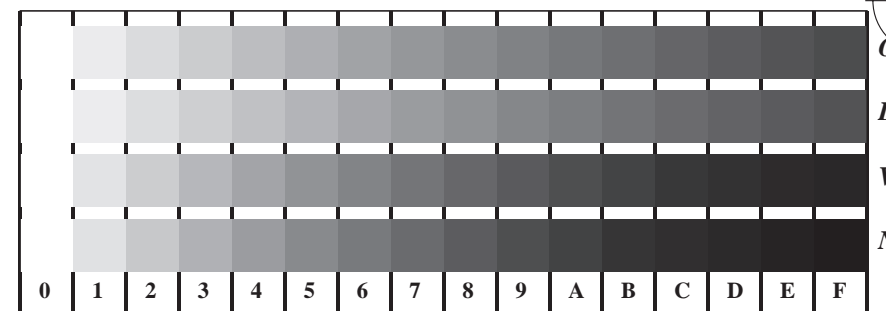
Picture D5n: Script and Landolt-rings *W*, *O*, *L* and *V*; PS operator *cmy0* setcmykcolor* (only)



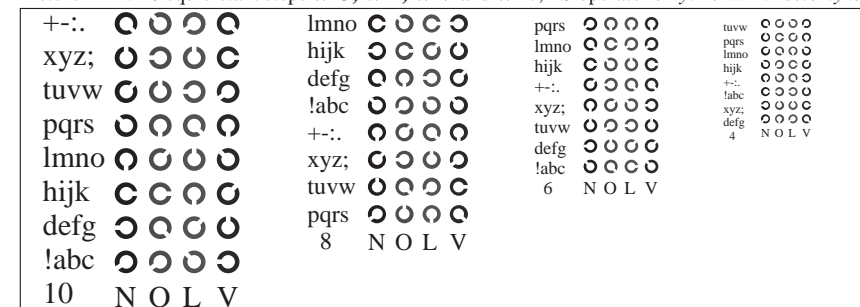
Picture D6n: Landolt-rings *N-O* and *N-L*; Use of PS operator *cmy0* setcmykcolor* (only)



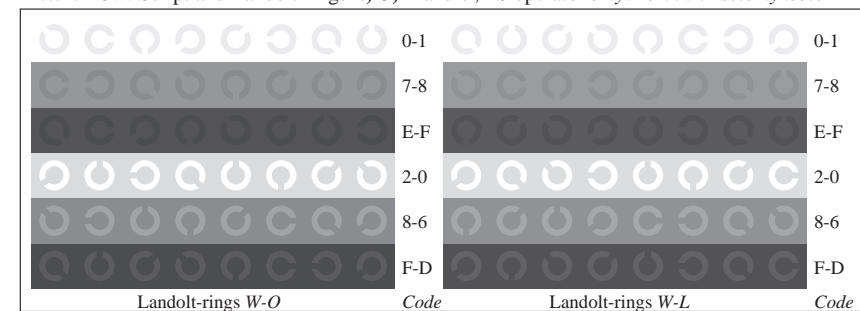
Picture D7n: Landolt-rings *N-V* and *N-W*; PS operator *cmy0* setcmykcolor* (only)



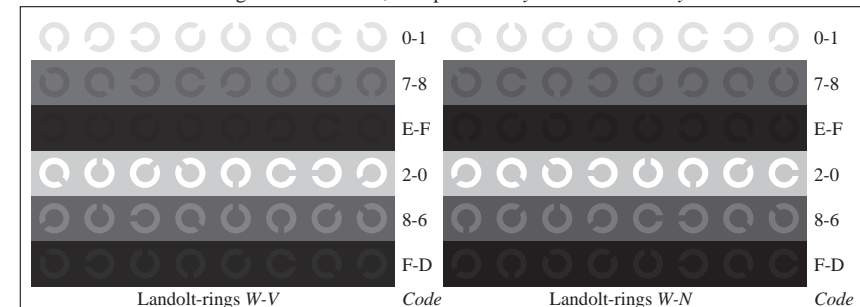
Picture D4w: 16 equidistant steps *W-O*, *W-L*, *W-V* and *W-N*; PS operator *cmy0*/000n* setcmykcolor*



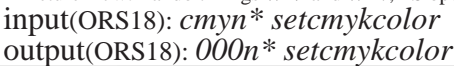
Picture D5w: Script and Landolt-rings *N*, *O*, *L* and *V*; PS operator *cmy0*/000n* setcmykcolor*



Picture D6w: Landolt-rings *W-O* and *W-L*; PS operator *cmy0*/000n* setcmykcolor*



Picture D7w: Landolt-rings *W-V* and *W-N*; PS operator *cmy0*/000n* setcmykcolor*



See for similar files: <http://www.ps.bam.de/LE20/10S/S20E46FP.PS/.PDF>; linearized output
 F: Output Linearization (OL) data LE20/10S/S20E46FP.DAT in File (F)

Information and Order: <http://www.ps.bam.de/LE20/10S/S20E46FP.PS/.PDF>
 Version 2.0, io=0,6; iORS; oORS, CIELAB

BAM registration: 20030101-LE20/10S/S20E46FP.PS/.PDF
 application for measurement of monitor (Yr=2.5) and printer output

BAM material: code=tha4ta