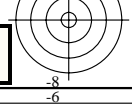
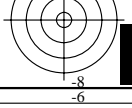
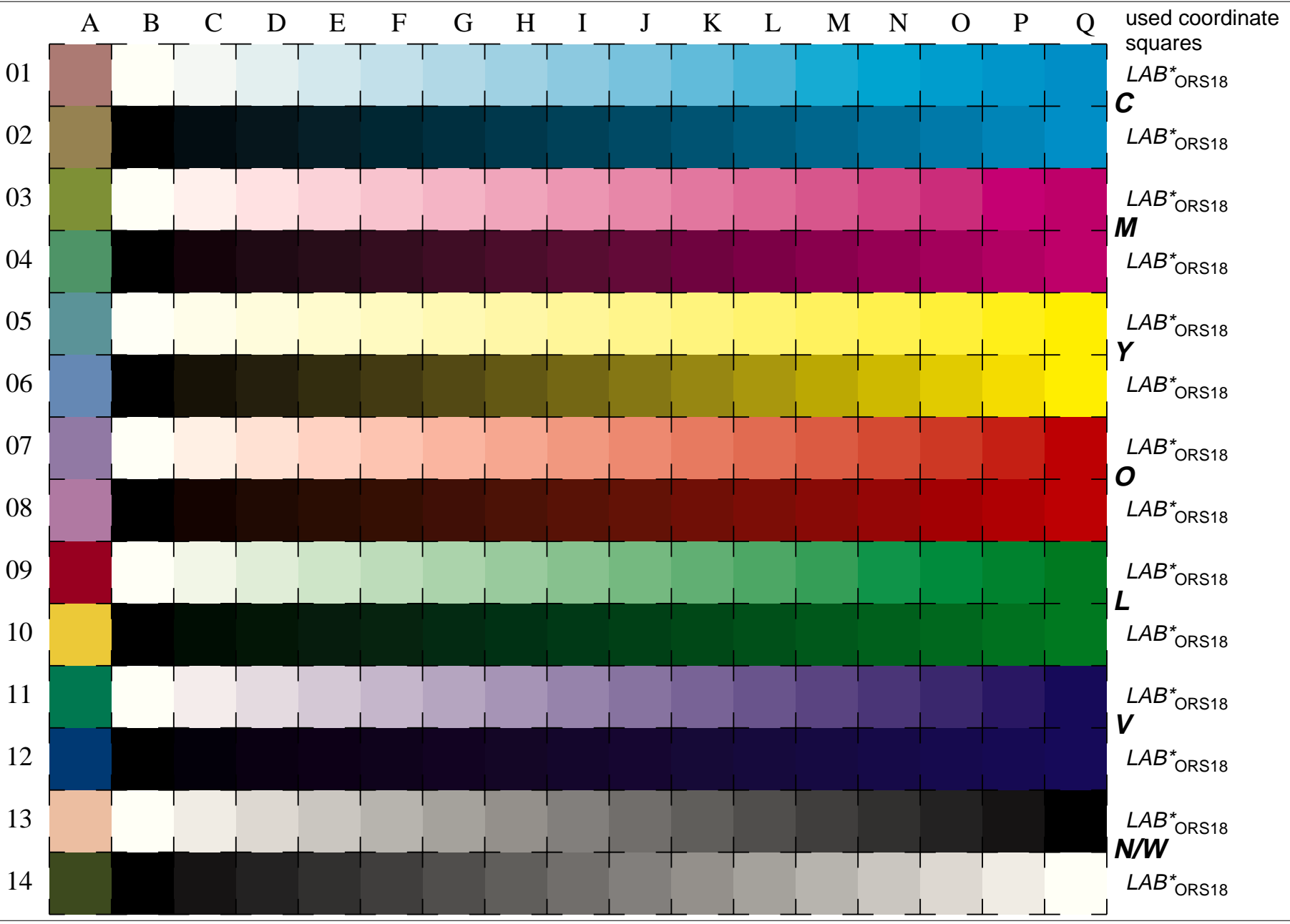
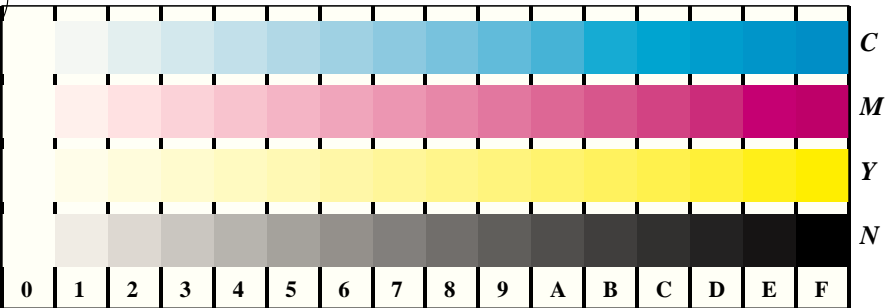


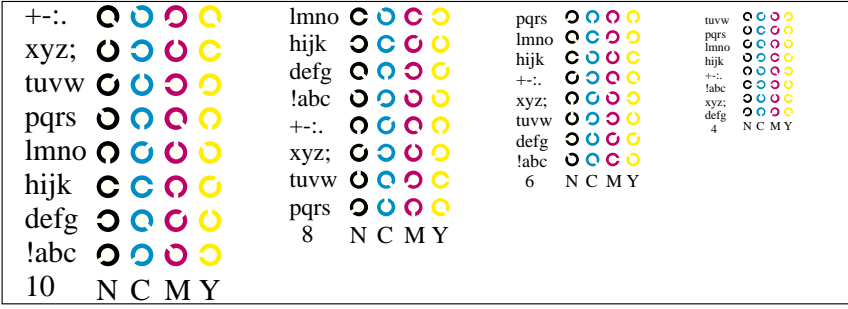
See for similar files: <http://www.ps.bam.de/LE22/LE22.HTM>
Information and Order: <http://www.ps.bam.de> Version 2.0, io=5,4; iORS; oORS, CIELAB

BAM registration: 20030101-LE22/10L/L22E04FP.PS/.PDF BAM material: code=tha4ta
application for measurement of monitor (Yr=2.5) and printer output

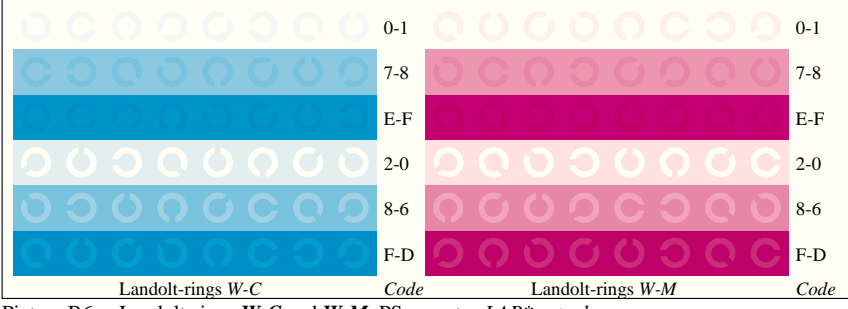




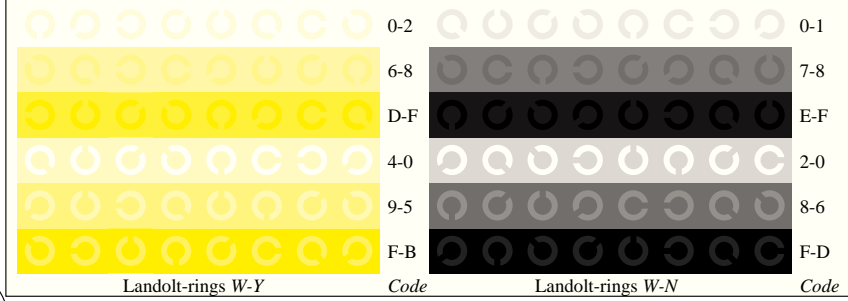
Picture D4w: 16 equidistant steps *W-C*, *W-M*, *W-Y* and *W-N*; PS operator *LAB* setcolor*



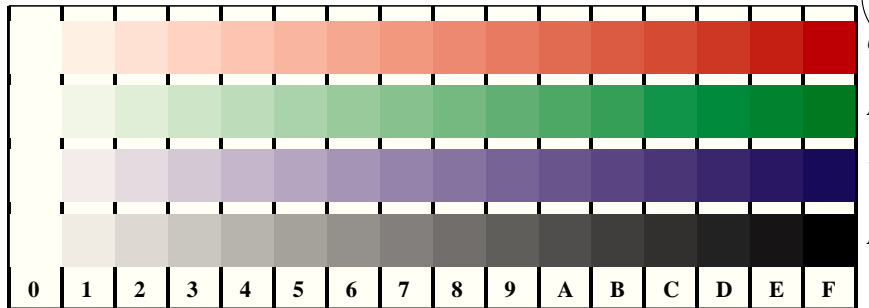
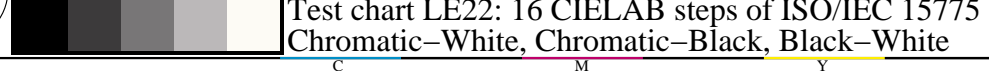
Picture B5w: Script and Landolt-rings *N*, *C*, *M* and *Y*; PS operator *LAB* setcolor*



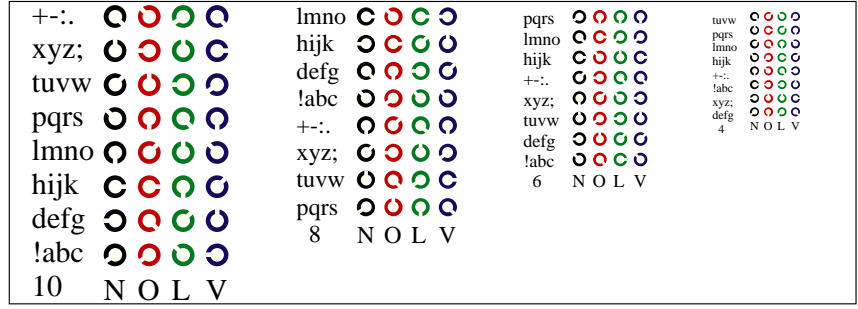
Picture B6w: Landolt-rings *W-C* and *W-M*; PS operator *LAB* setcolor*



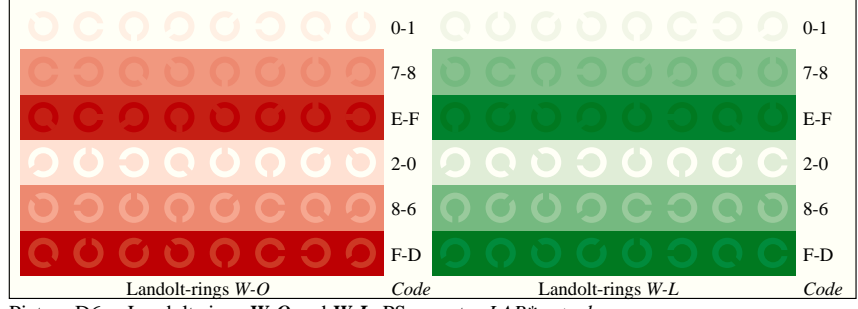
Picture B7w: Landolt-rings *W-Y* and *W-N*; PS operator *LAB* setcolor*



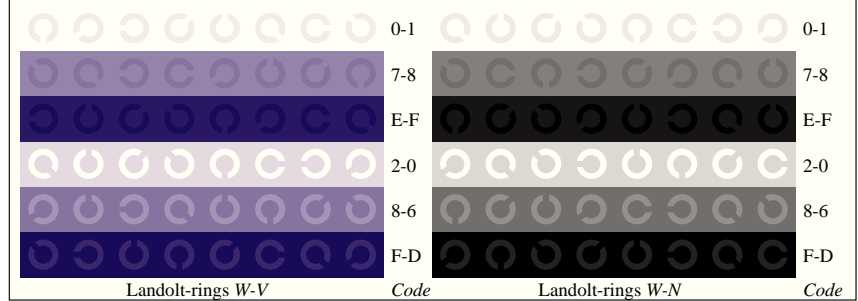
Picture D4w: 16 equidistant steps *W-O*, *W-L*, *W-V* and *W-N*; PS operator *LAB* setcolor*



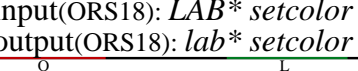
Picture D5w: Script and Landolt-rings *N*, *O*, *L* and *V*; PS operator *LAB* setcolor*



Picture D6w: Landolt-rings *W-O* and *W-L*; PS operator *LAB* setcolor*

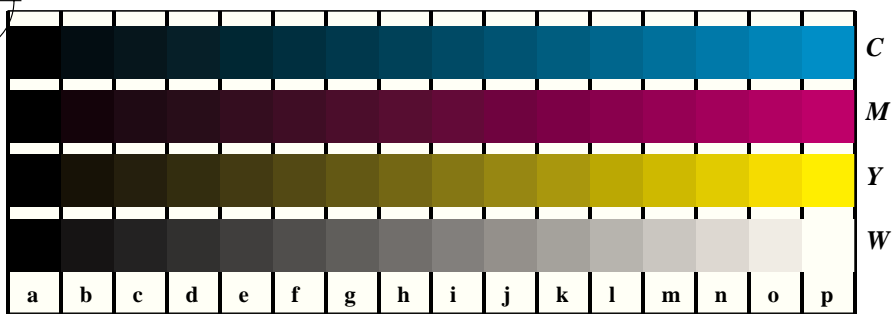


Picture D7w: Landolt-rings *W-V* and *W-N*; PS operator *LAB* setcolor*



See for similar files: <http://www.ps.bam.de/LE22/LE22.HTM>
 Information and Order: <http://www.ps.bam.de>
 Version 2.0, io=5,4; iORS; oORS, CIELAB

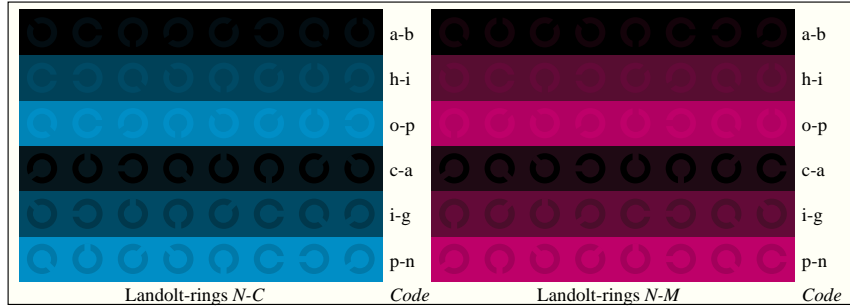
BAM registration: 20030101-LE22/10L/L22E14FP.PS/.PDF
 application for measurement of monitor (Yr=2.5) and printer output
 BAM material: code=tha4ta



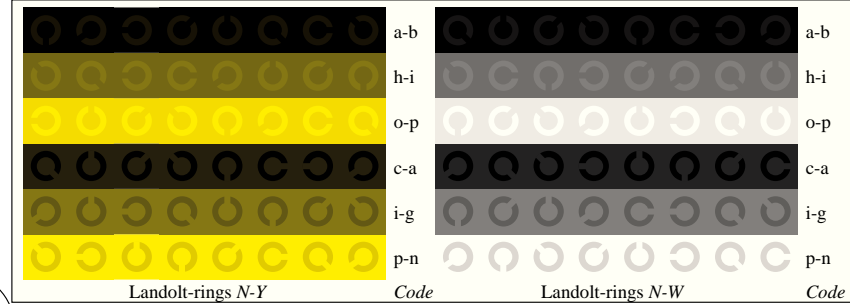
Picture B4n: 16 equidistant steps *W-C*, *W-M*, *W-Y* and *W-N*; PS operator *LAB* setcolor*



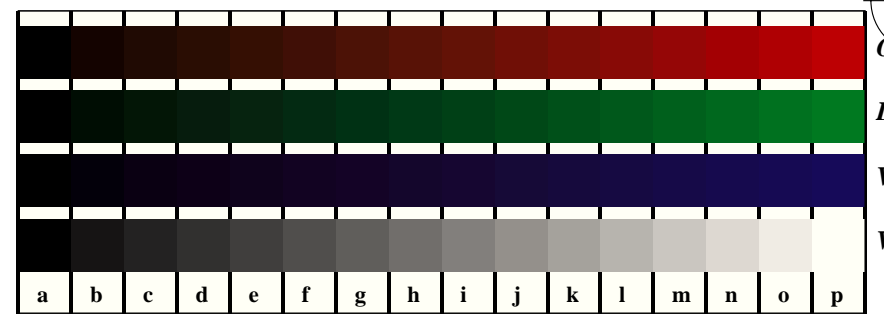
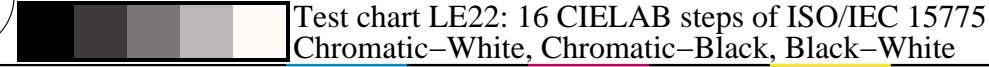
Picture D5n: Script and Landolt-rings *W*, *C*, *M* and *Y*; PS operator *LAB* setcolor*



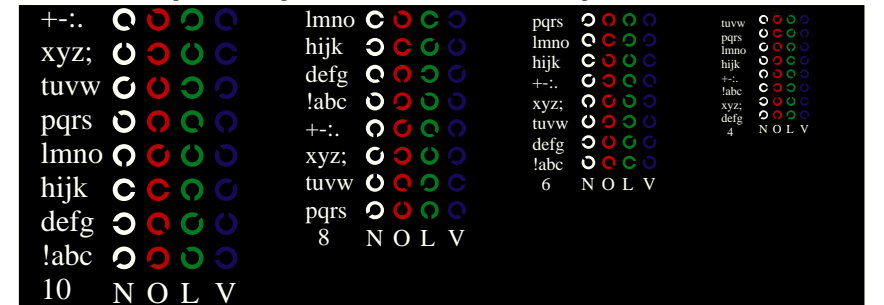
Picture B6n: Landolt-rings *N-C* and *N-M*; PS operator *LAB* setcolor*



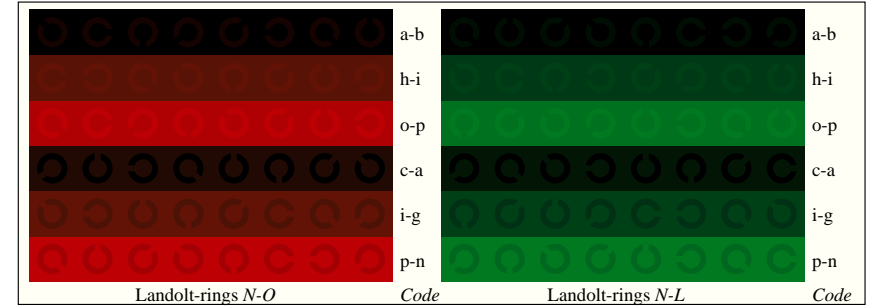
Picture B7n: Landolt-rings *W-Y* and *W-N*; PS operator *LAB* setcolor*



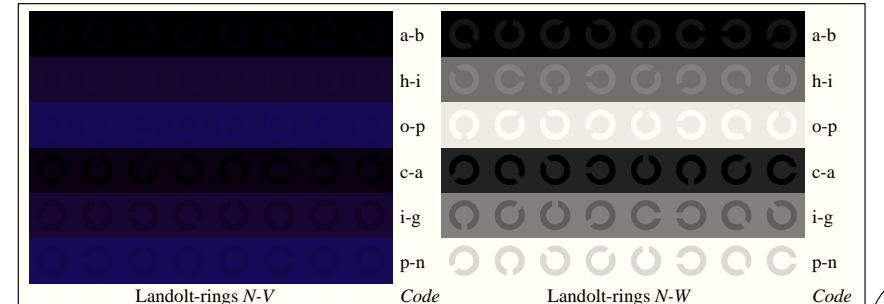
Picture D4n: 16 equidistant steps *W-O*, *W-L*, *W-V* and *W-N*; PS operator *LAB* setcolor*



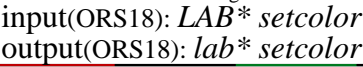
Picture D5n: Script and Landolt-rings *W*, *O*, *L* and *V*; PS operator *LAB* setcolor*



Picture D6n: Landolt-rings *N-O* and *N-L*; PS operator *LAB* setcolor*



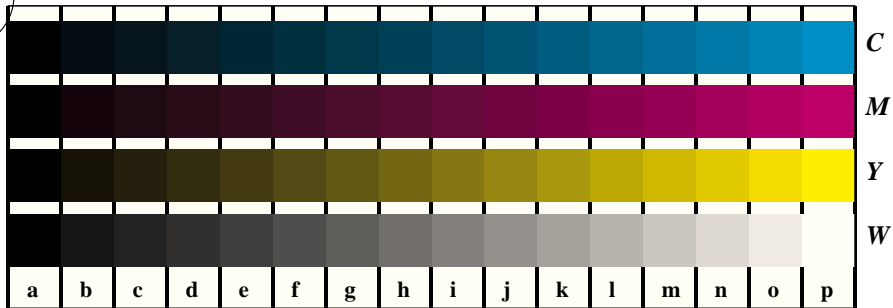
Picture D7n: Landolt-rings *N-V* and *N-N*; PS operator *LAB* setcolor*



See for similar files: <http://www.ps.bam.de/LE22/LE22.HTM>
 Information and Order: <http://www.ps.bam.de>

Version 2.0, io=5,4; iORS; oORS, CIELAB

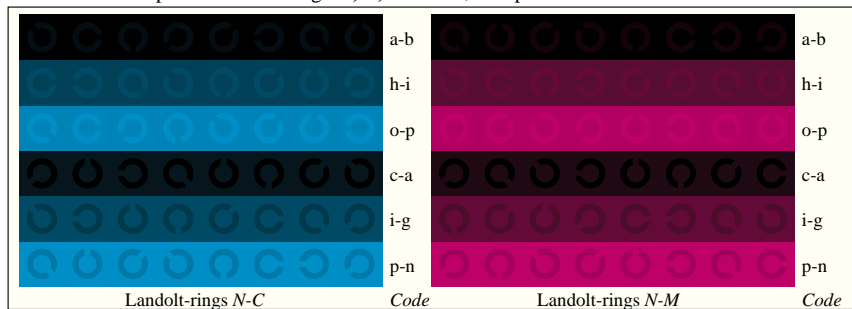
BAM registration: 20030101-LE22/10L/L22E24FP.PS/.PDF
 application for measurement of monitor (Yr=2.5) and printer output
 BAM material: code=tha4ta



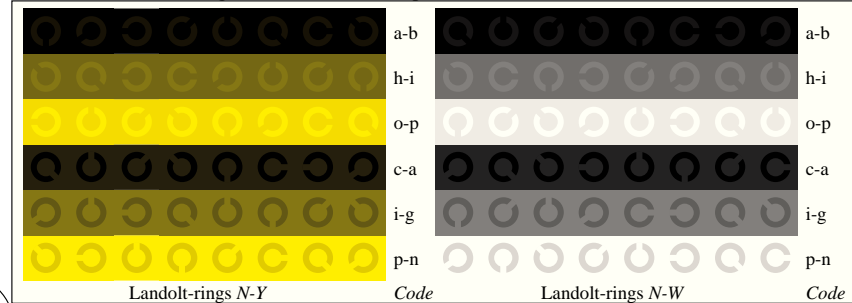
Picture B4n: 16 equidistant steps *W-C*, *W-M*, *W-Y* and *W-N*; PS operator *LAB* setcolor*



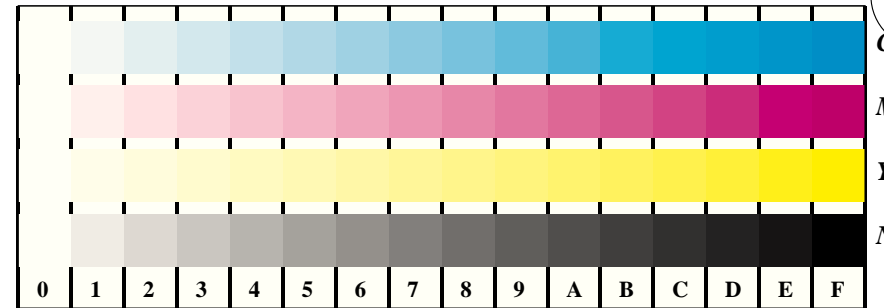
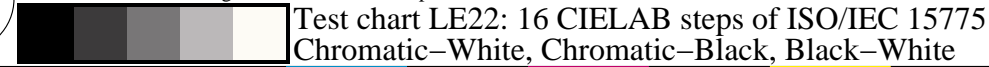
Picture D5n: Script and Landolt-rings *W*, *C*, *M* and *Y*; PS operator *LAB* setcolor*



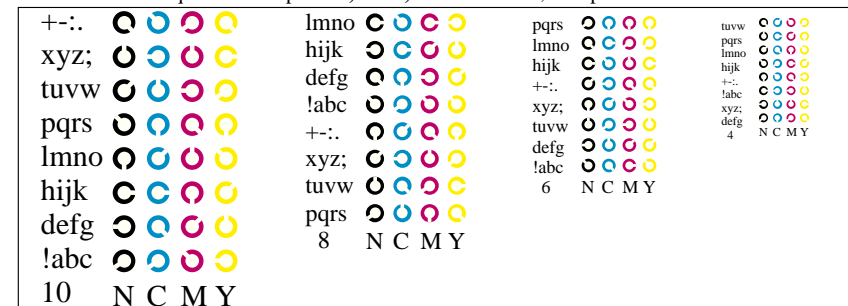
Picture B6n: Landolt-rings *N-C* and *N-M*; PS operator *LAB* setcolor*



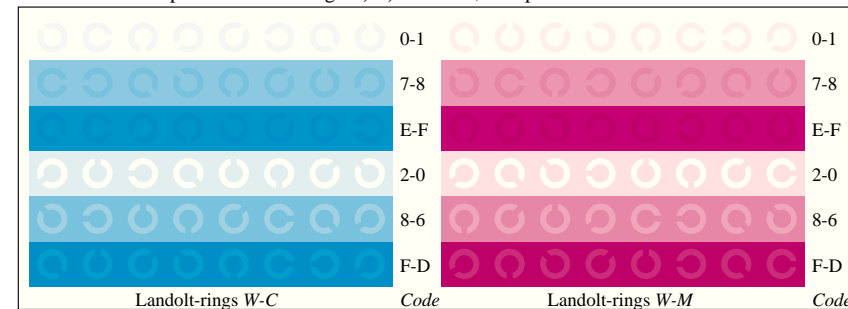
Picture B7n: Landolt-rings *W-Y* and *W-N*; PS operator *LAB* setcolor*



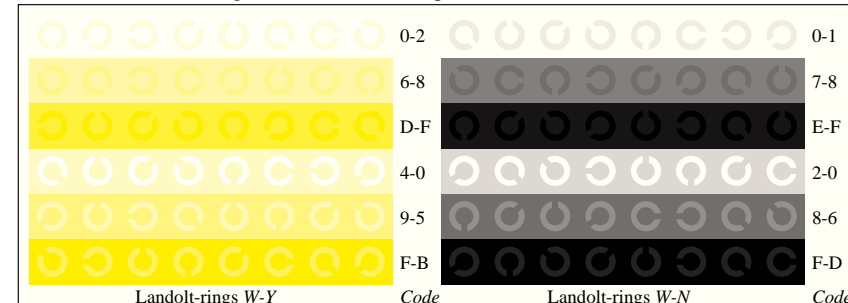
Picture D4w: 16 equidistant steps *W-C*, *W-M*, *W-Y* and *W-N*; PS operator *LAB* setcolor*



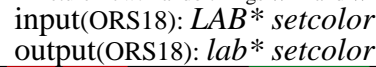
Picture B5w: Script and Landolt-rings *N*, *C*, *M* and *Y*; PS operator *LAB* setcolor*



Picture B6w: Landolt-rings *W-C* and *W-M*; PS operator *LAB* setcolor*



Picture B7w: Landolt-rings *W-Y* and *W-N*; PS operator *LAB* setcolor*

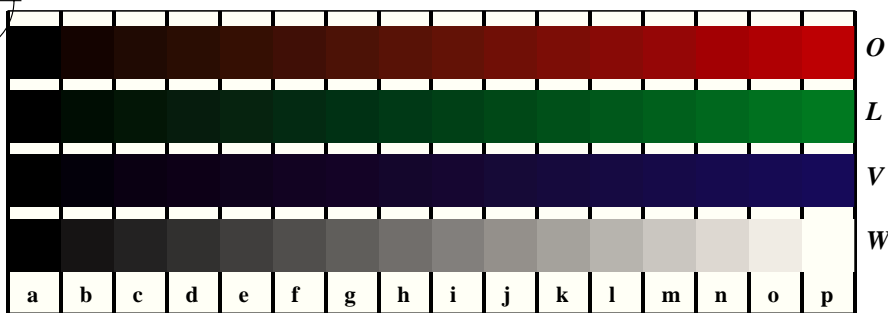


See for similar files: <http://www.ps.bam.de/LE22/LE22.HTM>
 Information and Order: <http://www.ps.bam.de>

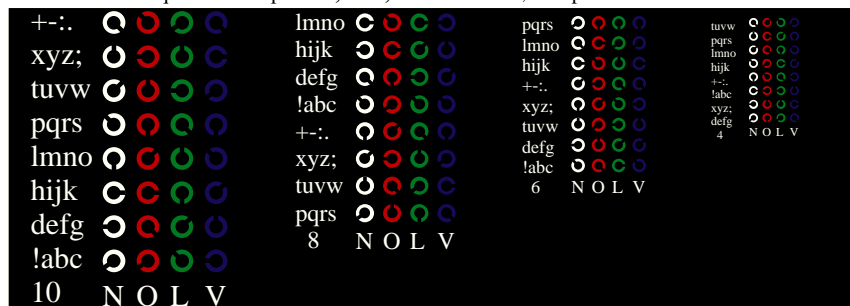
Version 2.0, io=5,4; iORS; oORS, CIELAB

BAM registration: 20030101-LE22/10L/L22E34FP.PS/.PDF
 application for measurement of monitor (Yr=2.5) and printer output

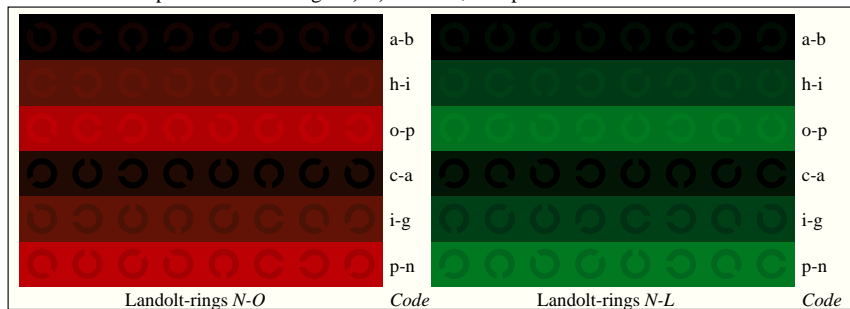
BAM material: code=tha4ta



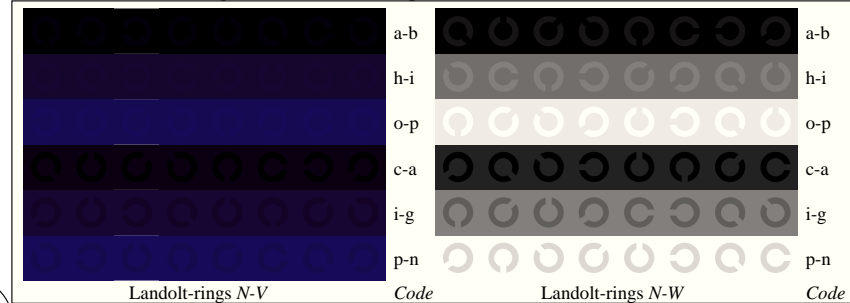
Picture D4n: 16 equidistant steps *W-O*, *W-L*, *W-V* and *W-N*; PS operator *LAB* setcolor*



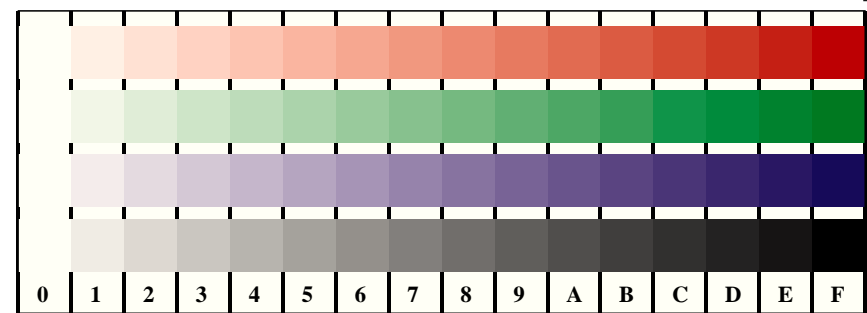
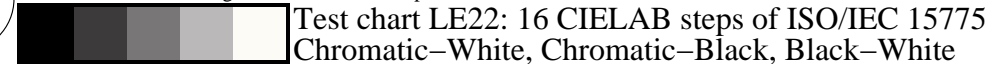
Picture D5n: Script and Landolt-rings *W*, *O*, *L* and *V*; PS operator *LAB* setcolor*



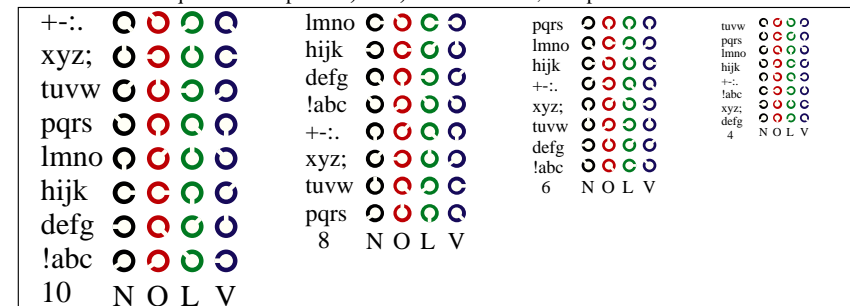
Picture D6n: Landolt-rings *N-O* and *N-L*; PS operator *LAB* setcolor*



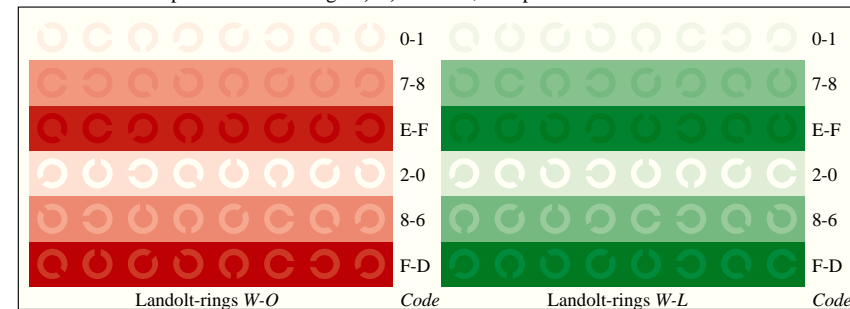
Picture D7n: Landolt-rings *N-V* and *N-N*; PS operator *LAB* setcolor*



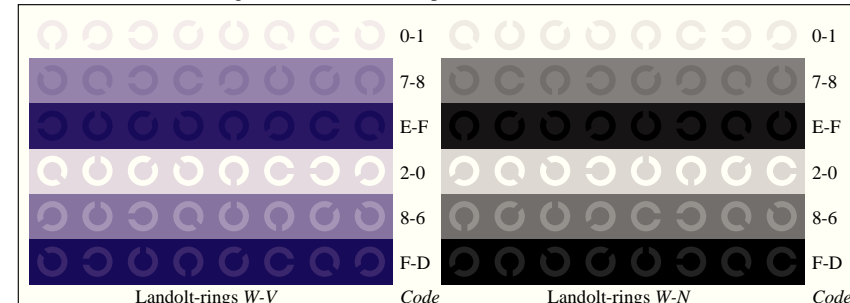
Picture D4w: 16 equidistant steps *W-O*, *W-L*, *W-V* and *W-N*; PS operator *LAB* setcolor*



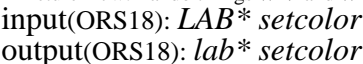
Picture D5w: Script and Landolt-rings *N*, *O*, *L* and *V*; PS operator *LAB* setcolor*



Picture D6w: Landolt-rings *W-O* and *W-L*; PS operator *LAB* setcolor*



Picture D7w: Landolt-rings *W-V* and *W-N*; PS operator *LAB* setcolor*



See for similar files: <http://www.ps.bam.de/LE22/LE22.HTM>
 Information and Order: <http://www.ps.bam.de>

Version 2.0, io=5,4; iORS; oORS, CIELAB

BAM registration: 20030101-LE22/10L/L22E44FP.PS/.PDF
 application for measurement of monitor (Yr=2.5) and printer output

BAM material: code=tha4ta