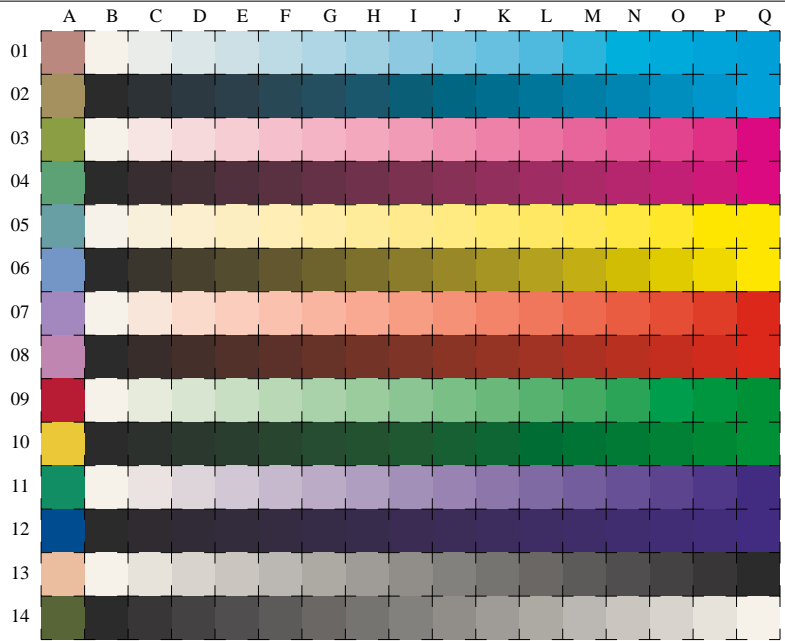


See for similar files: <http://www.ps.bam.de/LE22/LE22.HTM>
 Information and Order: <http://www.ps.bam.de> Version 2.0, io=5,5



used coordinate squares
C LAB^*_{ORS18}
M LAB^*_{ORS18}
Y LAB^*_{ORS18}
O LAB^*_{ORS18}
L LAB^*_{ORS18}
V LAB^*_{ORS18}
N/W LAB^*_{ORS18}

16 equidistant CIELAB steps: C-W, C-N, M-W, M-N, Y-W, Y-N, O-W, O-N, L-W, L-N, V-W, V-N, N-W, W-N and 14 CIE-test colours (left)

Test chart LE22: 16 CIELAB steps of ISO/IEC 15775 input(ORS18): LAB^* setcolor
 Chromatic-White, Chromatic-Black, Black-White output(ORS18): no change compared to input

BAM registration: 20030101-LE22/L22E00N1.PS/.TXT
 application for measurement of monitor (Y1=2.5) and printer output
 BAM material: code=th4ta