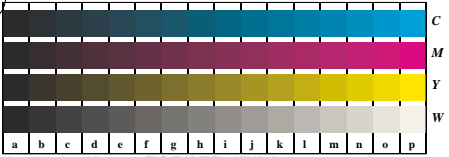


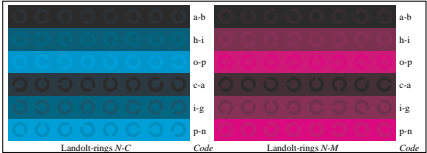
See for similar files: <http://www.ps.bam.de/LE22/LE22.HTM>
 Information and Order: <http://www.ps.bam.de> Version 2.0, io-5,5



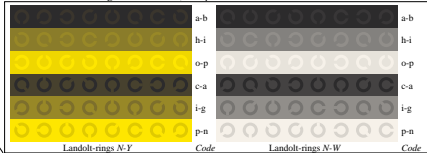
Picture B4n: 16 equidistant steps W-C, W-M, W-Y and W-N; PS operator *LAB* setcolor*



Picture D5n: Script and Landolt-rings W, C, M and Y; PS operator *LAB* setcolor*

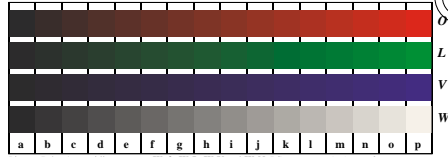


Picture B6n: Landolt-rings N-C and N-M; PS operator *LAB* setcolor*



Picture B7n: Landolt-rings W-Y and W-N; PS operator *LAB* setcolor*

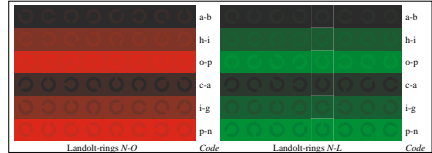
Test chart LE22: 16 CIELAB steps of ISO/IEC 15775
 Chromatic-White, Chromatic-Black, Black-White



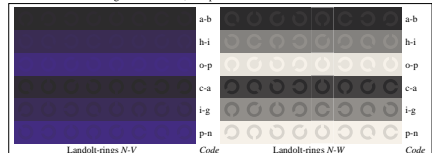
Picture D4n: 16 equidistant steps W-O, W-L, W-V and W-N; PS operator *LAB* setcolor*



Picture D5n: Script and Landolt-rings W, O, L and V; PS operator *LAB* setcolor*



Picture D6n: Landolt-rings N-O and N-L; PS operator *LAB* setcolor*



Picture D7n: Landolt-rings N-V and N-N; PS operator *LAB* setcolor*

input(ORS18): *LAB* setcolor*
 output(ORS18): *no change compared to input*

BAM registration: 20030101-LE22/L22E00N3.PS.TXT
 application for measurement of monitor (Y=Z.5) and printer output
 BAM material: code=thata