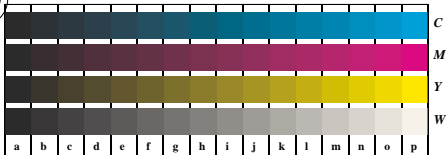


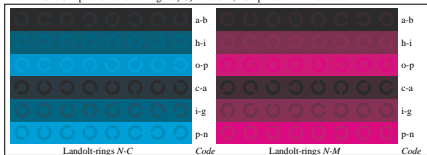
See for similar files: <http://www.ps.bam.de/LE22/LE22.HTM>
 Information and Order: <http://www.ps.bam.de> Version 2.0, io-5,5



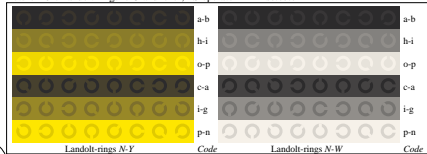
Picture B4n: 16 equidistant steps W-C, W-M, W-Y and W-N; PS operator LAB* setcolor



Picture D5n: Script and Landolt-rings W, C, M and Y; PS operator LAB* setcolor

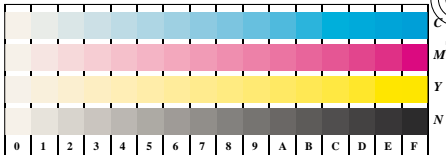


Picture B6n: Landolt-rings N-C and N-M; PS operator LAB* setcolor



Picture B7n: Landolt-rings N-Y and N-W; PS operator LAB* setcolor

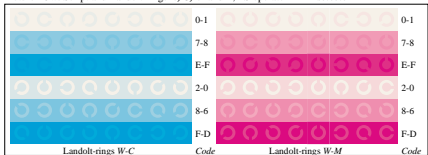
Test chart LE22: 16 CIELAB steps of ISO/IEC 15775
 Chromatic-White, Chromatic-Black, Black-White



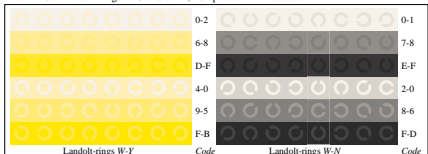
Picture D4w: 16 equidistant steps W-C, W-M, W-Y and W-N; PS operator LAB* setcolor



Picture B5w: Script and Landolt-rings N, C, M and Y; PS operator LAB* setcolor



Picture B6w: Landolt-rings W-C and W-M; PS operator LAB* setcolor



Picture B7w: Landolt-rings W-Y and W-N; PS operator LAB* setcolor

input(ORS18): LAB* setcolor
 output(ORS18): no change compared to input

BAM registration: 20030101-LE22/L22E00N4.PS/1.TXT
 application for measurement of monitor (Y1=Z.5) and printer output
 BAM material: code=thata