

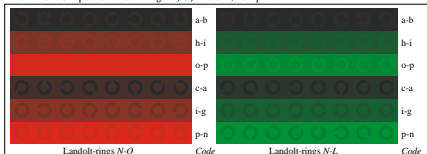
See for similar files: <http://www.ps.bam.de/LE22/LE22.HTM>
 Information and Order: <http://www.ps.bam.de> Version 2.0, io=5,5



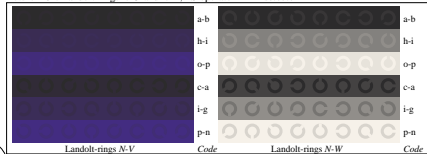
Picture D4n: 16 equidistant steps W-O, W-L, W-V and W-N; PS operator LAB* setcolor



Picture D5n: Script and Landolt-rings W, O, L and V; PS operator LAB* setcolor

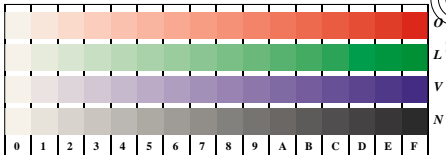


Picture D6n: Landolt-rings N-O and N-L; PS operator LAB* setcolor

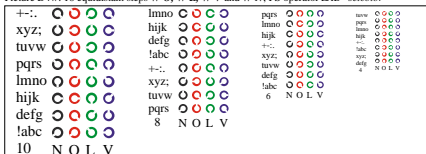


Picture D7n: Landolt-rings N-V and N-W; PS operator LAB* setcolor

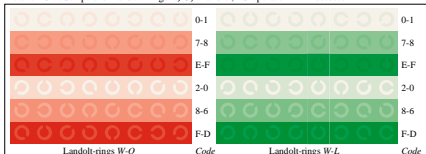
Test chart LE22: 16 CIELAB steps of ISO/IEC 15775
 Chromatic-White, Chromatic-Black, Black-White



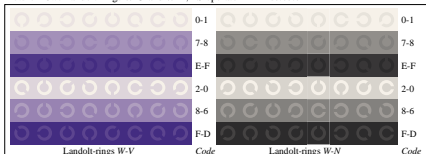
Picture D4w: 16 equidistant steps W-O, W-L, W-V and W-N; PS operator LAB* setcolor



Picture D5w: Script and Landolt-rings N, O, L and V; PS operator LAB* setcolor



Picture D6w: Landolt-rings W-O and W-L; PS operator LAB* setcolor



Picture D7w: Landolt-rings W-V and W-N; PS operator LAB* setcolor

input(ORS18): LAB* setcolor
 output(ORS18): no change compared to input

BAM registration: 20030101-LE22/L22E00N5.PS/1.TXT
 application for measurement of monitor (Y1=2.5) and printer output
 BAM material: code=thata