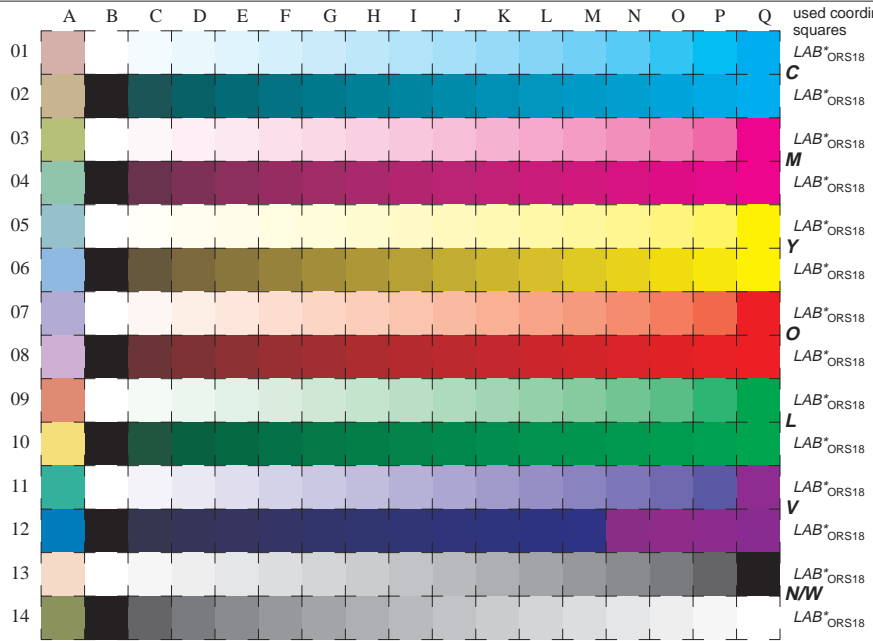


See for similar files: <http://www.ps.bam.de/LE22/LE22.HTM>  
 Information and Order: <http://www.ps.bam.de> Version 2.0, io-5,0; iORS; oORS, CIELAB



16 equidistant CIELAB steps: C-W, C-N, M-W, M-N, Y-W, Y-N, O-W, O-N, L-W, L-N, V-W, V-N, N-W, W-N and 14 CIE-test colours (left)

Test chart LE22: 16 CIELAB steps of ISO/IEC 15775 input(ORS18): LAB\*setcolor  
 Chromatic-White, Chromatic-Black, Black-White output(ORS18): cmy0\*/000n\*setcmykcolor

BAM registration: 20030101-LE22/10Q/Q22E00F1.PS/.TXT BAM material: code=th4ta  
 application for measurement of monitor (Y1=2.5) and printer output