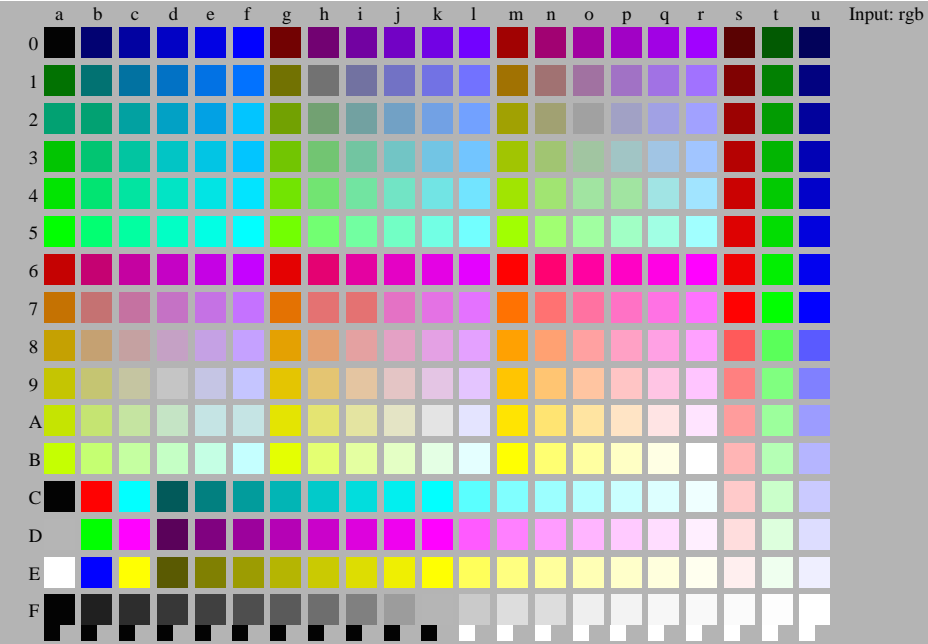


See for similar files: <http://www.ps.bam.de/LE23/LE23.HTM>  
Information and Order: <http://www.ps.bam.de> Version 2.0, io=1,1; iORS; oORS; CIELAB



BAM registration: 20040801-LE23/10Q/Q23E00F1.PS/.TXT  
application for measurement of printer systems  
BAM material: code=thata

Test chart file with 336 colours defined in IEC/WD 61966-7-1:2004 rgb colour coordinates

BAM-test chart LE23:  
336 colours are used, defined in IEC 61966-7-1:1999

input: *rgb setrgbcolor*  
output: *olv\* setrgbcolor / w\* setgray*