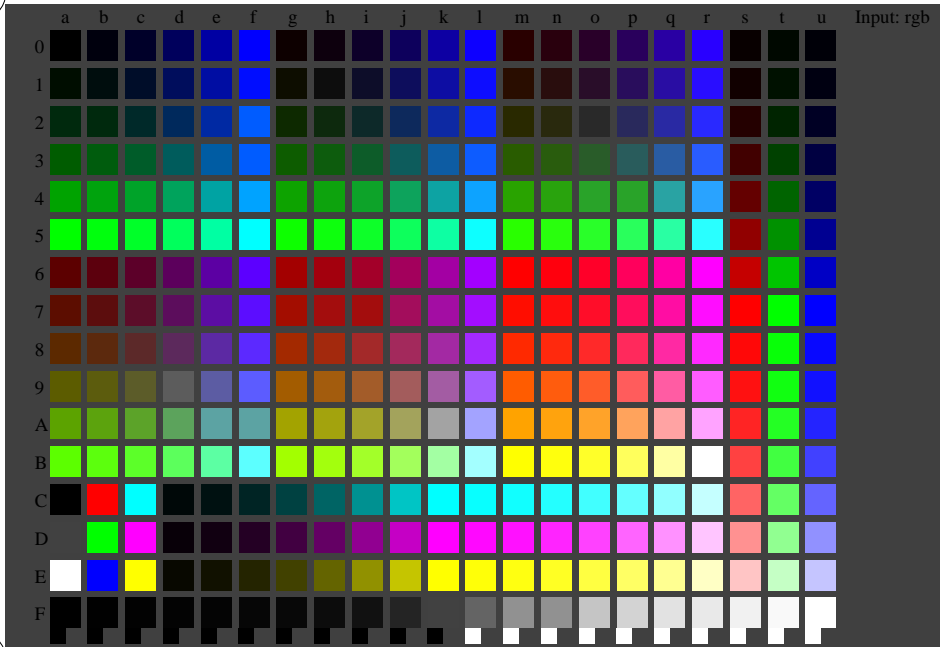


See for similar files: <http://www.ps.bam.de/LE23/LE23.HTM>
Information and Order: <http://www.ps.bam.de> Version 2.0, io=1, i:1ORS; o:ORS, CIELAB



Input: rgb

Test chart file with 336 colours defined in IEC/WD 61966-7-1:2004 rgb colour coordinates

BAM-test chart LE23:
336 colours are used, defined in IEC 61966-7-1:1999

input: *rgb setrgbcolor*
output: *olv* setrgbcolor / w* setgray*

BAM registration: 2004/08/01-LE23/10S/S23E00F1.PS/.TXT
application for measurement of printer systems
BAM material: code=thata