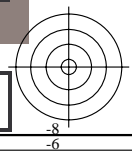
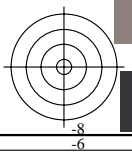
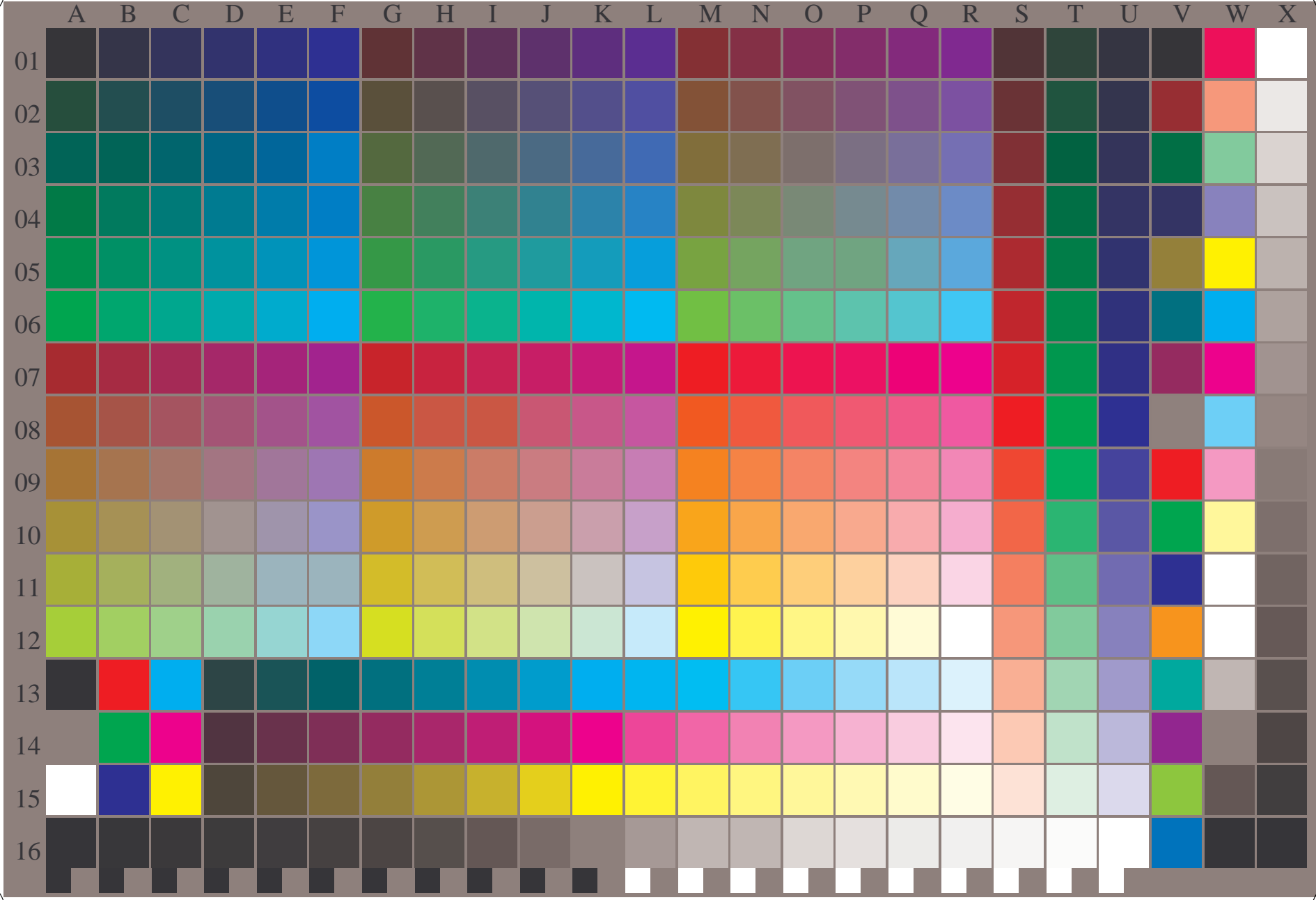


See for similar files: <http://www.ps.bam.de/LE26/LE26.HTM>
Information and Order: <http://www.ps.bam.de> Version 2.0, io=0,0?

BAM registration: 20040801-LE26/10L/L26E00SP.PS/.PDF
application for measurement of printer systems

BAM material: code=tha4ta



Test chart file with 363 colours and digital equidistant 5 and 16 step grey scale; see IEC 61966-7-1:1999 and ISO/IEC 15775:1999; cmy0 colour coordinates

BAM-test chart LE26: input: *cmy0 setcmykcolor*
384 colours of IEC 61966-7-1:1999 und ISO/IEC 15775:1999 output: *Startup (S) data depend*

