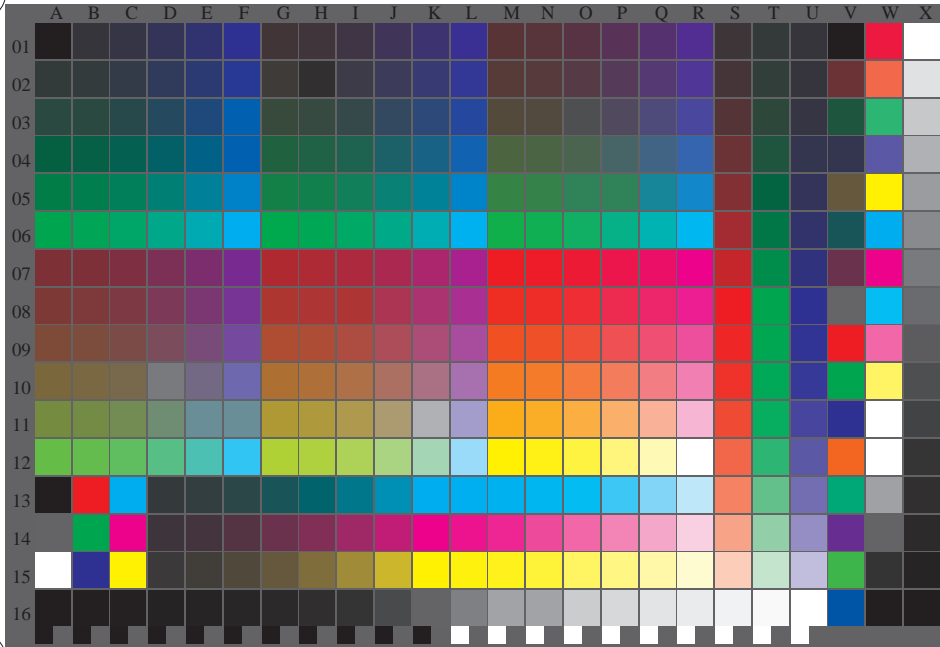


See for similar files: <http://www.ps.bam.de/LE26/LE26.HTM>  
Information and Order: <http://www.ps.bam.de> Version 2.0, io=0, iORS, oORS, CIELAB

BAM registration: 20040801-LE26/10S/S26E00F1.PS/.TXT  
application for measurement of printer systems  
BAM material: code=theta



Test chart file with 363 colours and digital equidistant 5 and 16 step grey scale; see IEC 61966-7-1:1999 and ISO/IEC 15775:1999; cmy0 colour coordinates

BAM-test chart LE26:  
384 colours of IEC 61966-7-1:1999 und ISO/IEC 15775:1999 output:  $cmy0^*/000n^*$  setcmykcolor

input:  $cmy0$  setcmykcolor