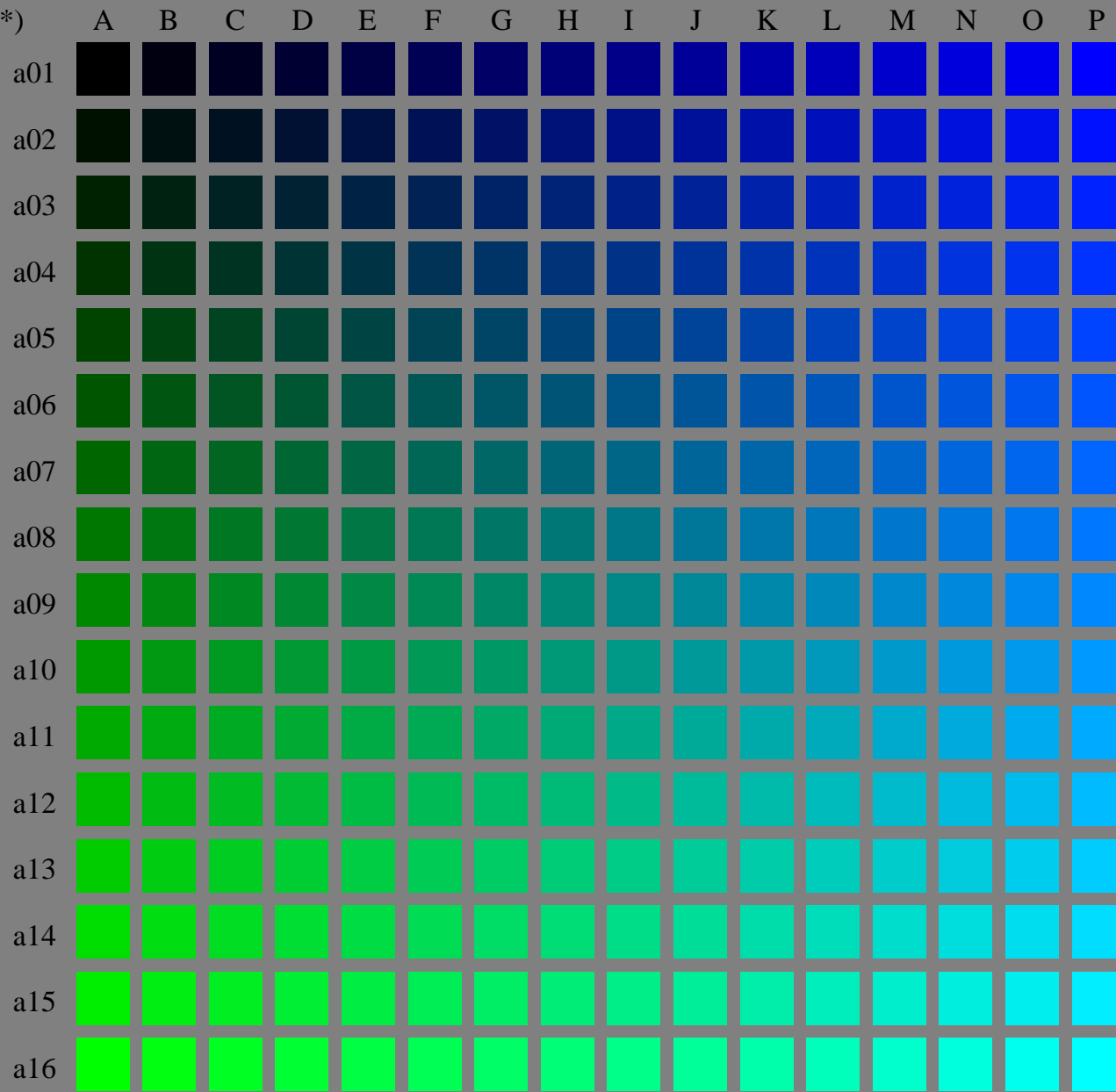


(olv3\* = 0.0, l3\*, v3\*)

(olv3\* = 0.0, 0, 1)



(olv3\* = 0.0, 1, 0)

LE330-7, Test chart file with 16x16x16 (=4096) colours; Device dependent colour coordinates olv3\* of ISO/IEC 15775:1999 as input; r3\* = o3\* = 0.0 = const.

BAM-test chart no. LE33; Systems ORS18 and TLS00  
4096 (=16x16x16) colours of ISO/IEC 15775:1999

input: olv3\* setrgbcolor  
output: Startup (S) data dependend

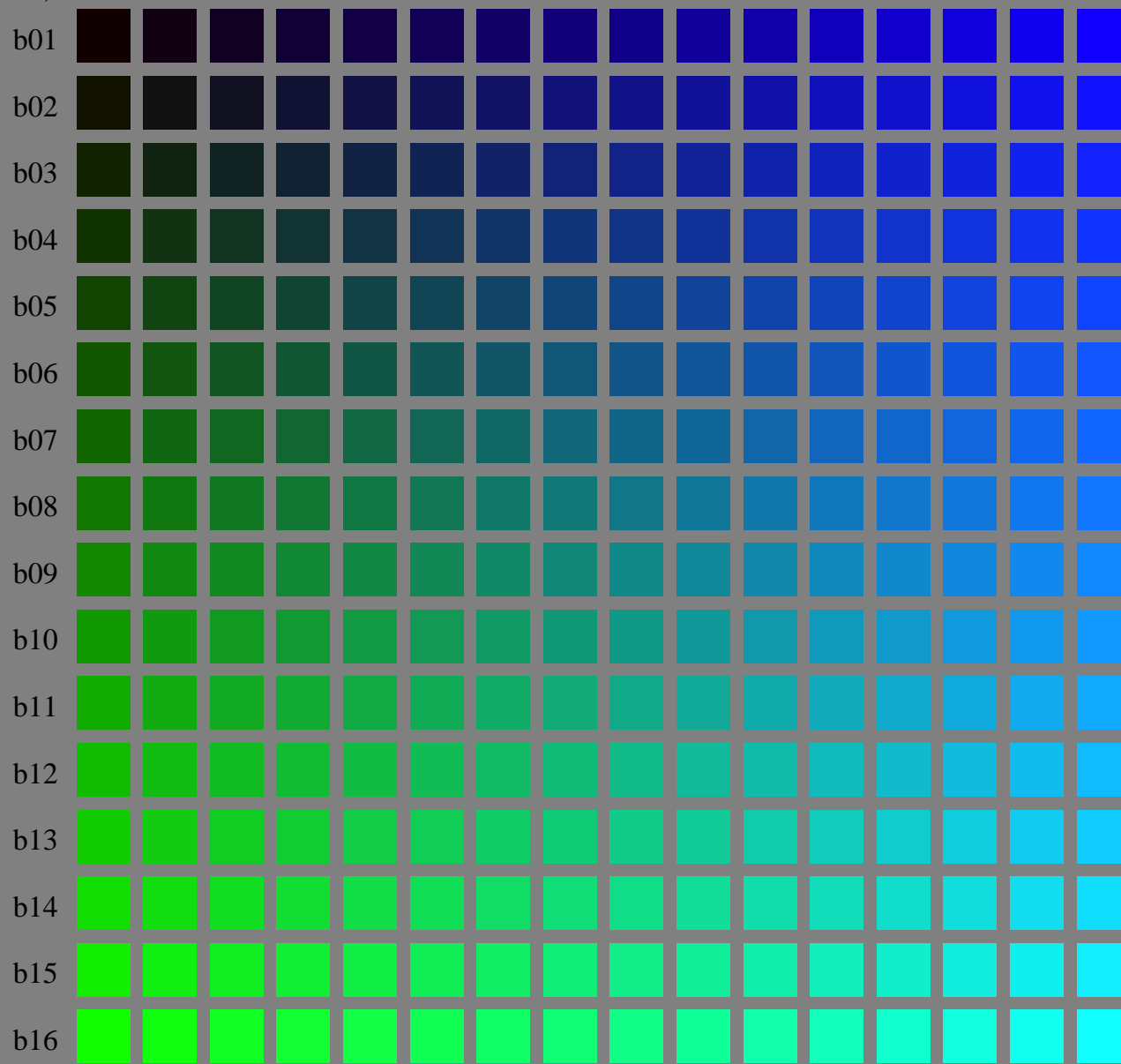
See for similar files: <http://www.ps.bam.de/LE33/>  
Technical information: <http://www.ps.bam.de> Version 2.1, io=1,1?

BAM registration: 20050501-LE33/10Q/Q33E00SP.PS/.PDF  
application for measurement of printer systems

LE33 Form: 1/16, Serie: 1/1, Page: 1 Page count: 1  
BAM material: code=rh4ta

( $olv3^* = 0.066, 13^*, v3^*$ )

( $olv3^* = 0.066, 0, 1$ )



( $olv3^* = 0.066, 1, 0$ )

LE330-7, Test chart file with 16x16x16 (=4096) colours; Device dependent colour coordinates  $olv3^*$  of ISO/IEC 15775:1999 as input;  $r3^* = o3^* = 0.066 = \text{const.}$

BAM-test chart no. LE33; Systems ORS18 and TLS00  
4096 (=16x16x16) colours of ISO/IEC 15775:1999

input:  $olv3^*$  *setrgbcolor*  
output: *Startup (S) data dependend*

See for similar files: <http://www.ps.bam.de/LE33/>  
Technical information: <http://www.ps.bam.de> Version 2.1, io=1,1?

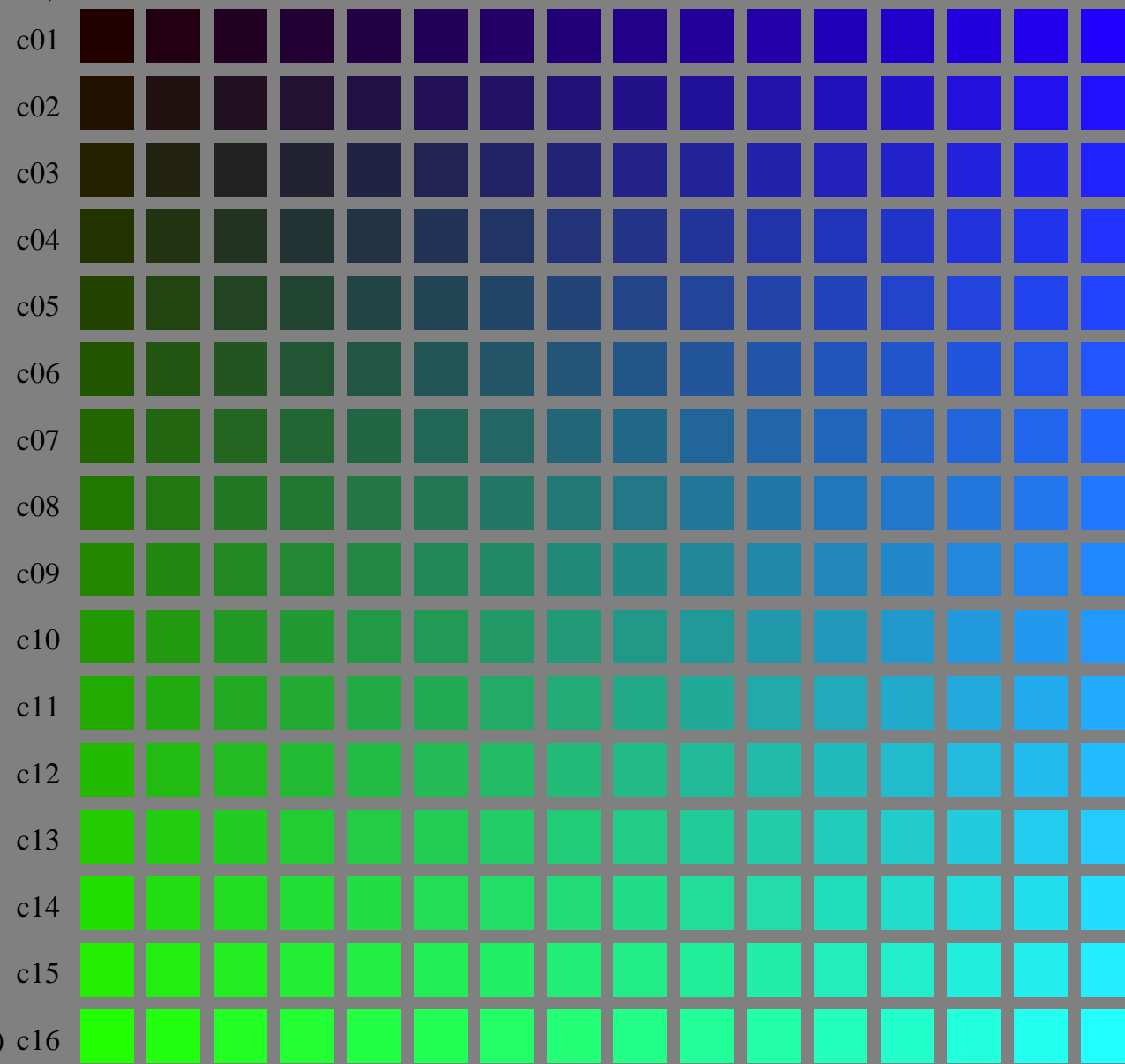
BAM registration: 20050501-LE33/10Q/Q33E01SP.PS/.PDF  
application for measurement of printer systems

/LE33 Form: 2/16, Serie: 1/1, Page: 2 Page count: 2

BAM material: code=rh4ta

( $olv3^* = 0.133, l3^*, v3^*$ )

( $olv3^* = 0.133, 0, 1$ )



( $olv3^* = 0.133, 1, 0$ )

LE330-7, Test chart file with 16x16x16 (=4096) colours; Device dependent colour coordinates  $olv3^*$  of ISO/IEC 15775:1999 as input;  $r3^* = o3^* = 0.133 = \text{const.}$

BAM-test chart no. LE33; Systems ORS18 and TLS00  
4096 (=16x16x16) colours of ISO/IEC 15775:1999

input:  $olv3^*$  *setrgbcolor*  
output: *Startup (S) data dependend*

See for similar files: <http://www.ps.bam.de/LE33/>  
Technical information: <http://www.ps.bam.de> Version 2.1, io=1,1?

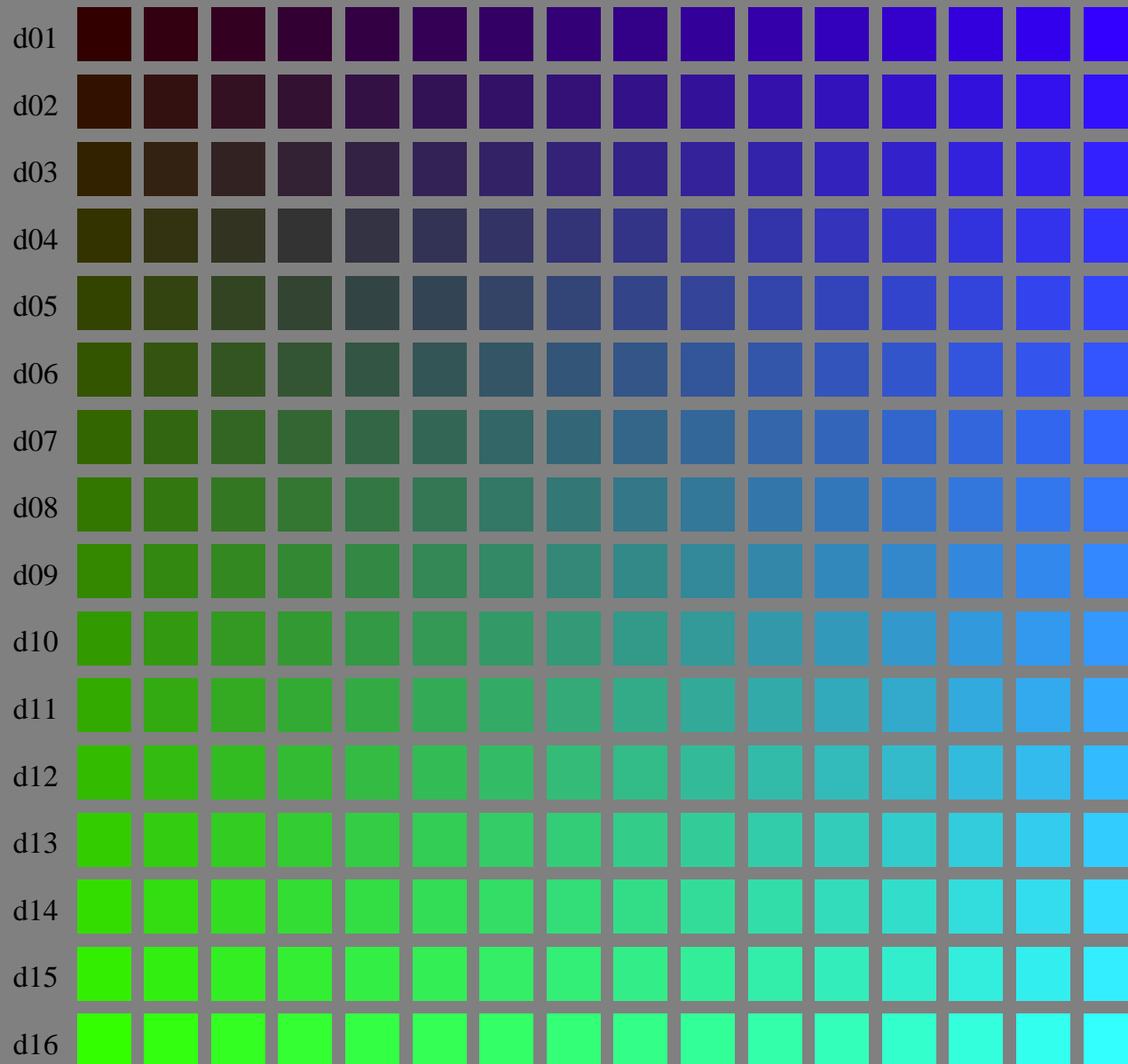
BAM registration: 20050501-LE33/10Q/Q33E02SP.PS/.PDF  
application for measurement of printer systems

/LE33 Form: 3/16, Serie: 1/1, Page: 3 Page count: 3

BAM material: code=rh4ta

( $olv3^* = 0.2, l3^*, v3^*$ )

( $olv3^* = 0.2, 0, 1$ )

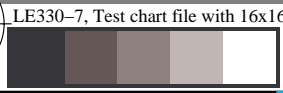


( $olv3^* = 0.2, 1, 0$ )

See for similar files: <http://www.ps.bam.de/LE33/>  
Technical information: <http://www.ps.bam.de> Version 2.1, io=1,1?

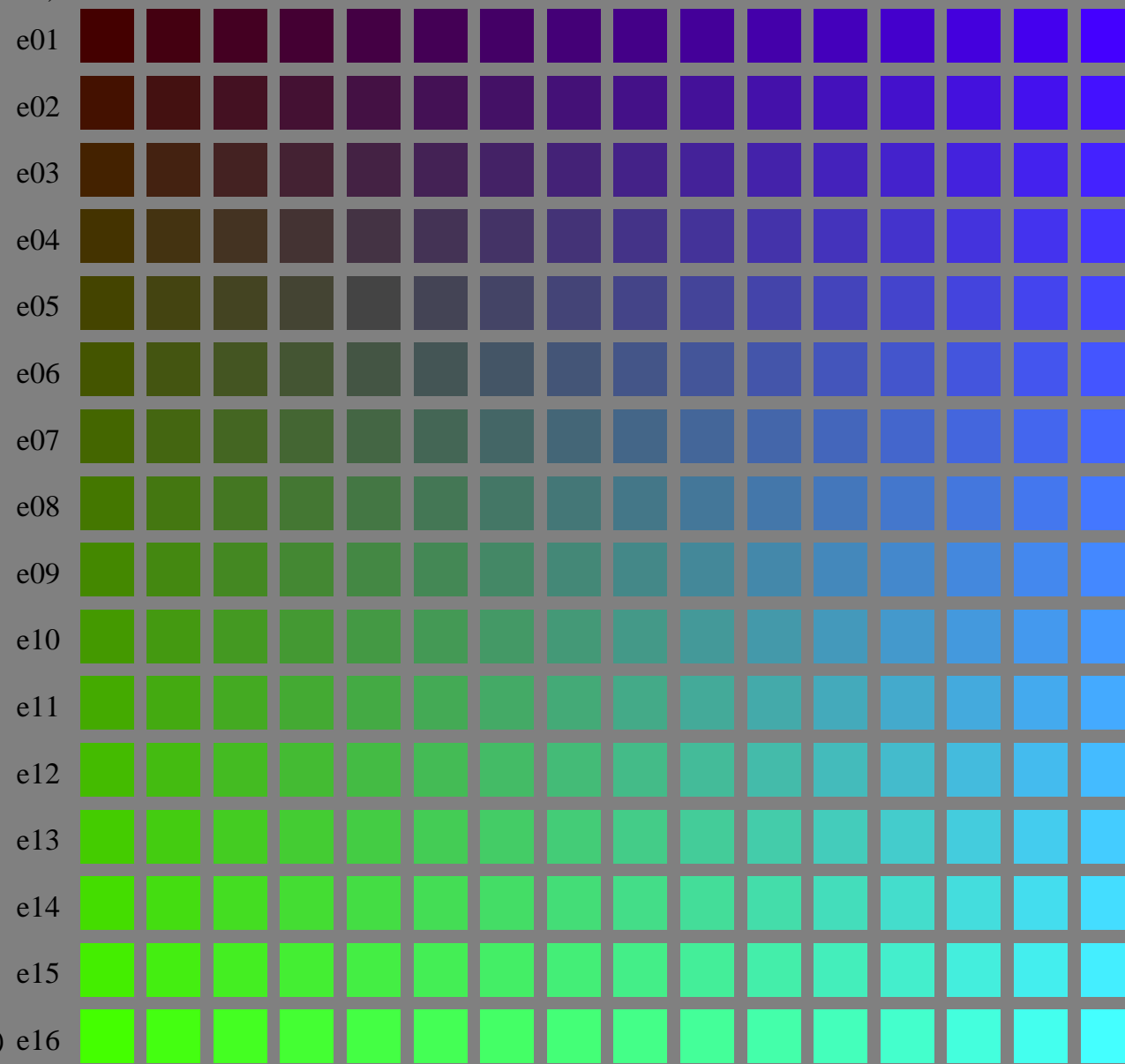
BAM registration: 20050501-LE33/10Q/Q33E03SP.PS/.PDF  
application for measurement of printer systems

BAM material: code=rh4ta  
/LE33 Form: 4/16, Serie: 1/1, Page: 4 Page count: 4



( $olv3^* = 0.266, l3^*, v3^*$ )

( $olv3^* = 0.266, 0, 1$ )



( $olv3^* = 0.266, 1, 0$ )

LE330-7, Test chart file with 16x16x16 (=4096) colours; Device dependent colour coordinates  $olv3^*$  of ISO/IEC 15775:1999 as input;  $r3^* = o3^* = 0.266 = \text{const.}$

BAM-test chart no. LE33; Systems ORS18 and TLS00  
4096 (=16x16x16) colours of ISO/IEC 15775:1999

input:  $olv3^*$  *setrgbcolor*  
output: *Startup (S) data dependend*

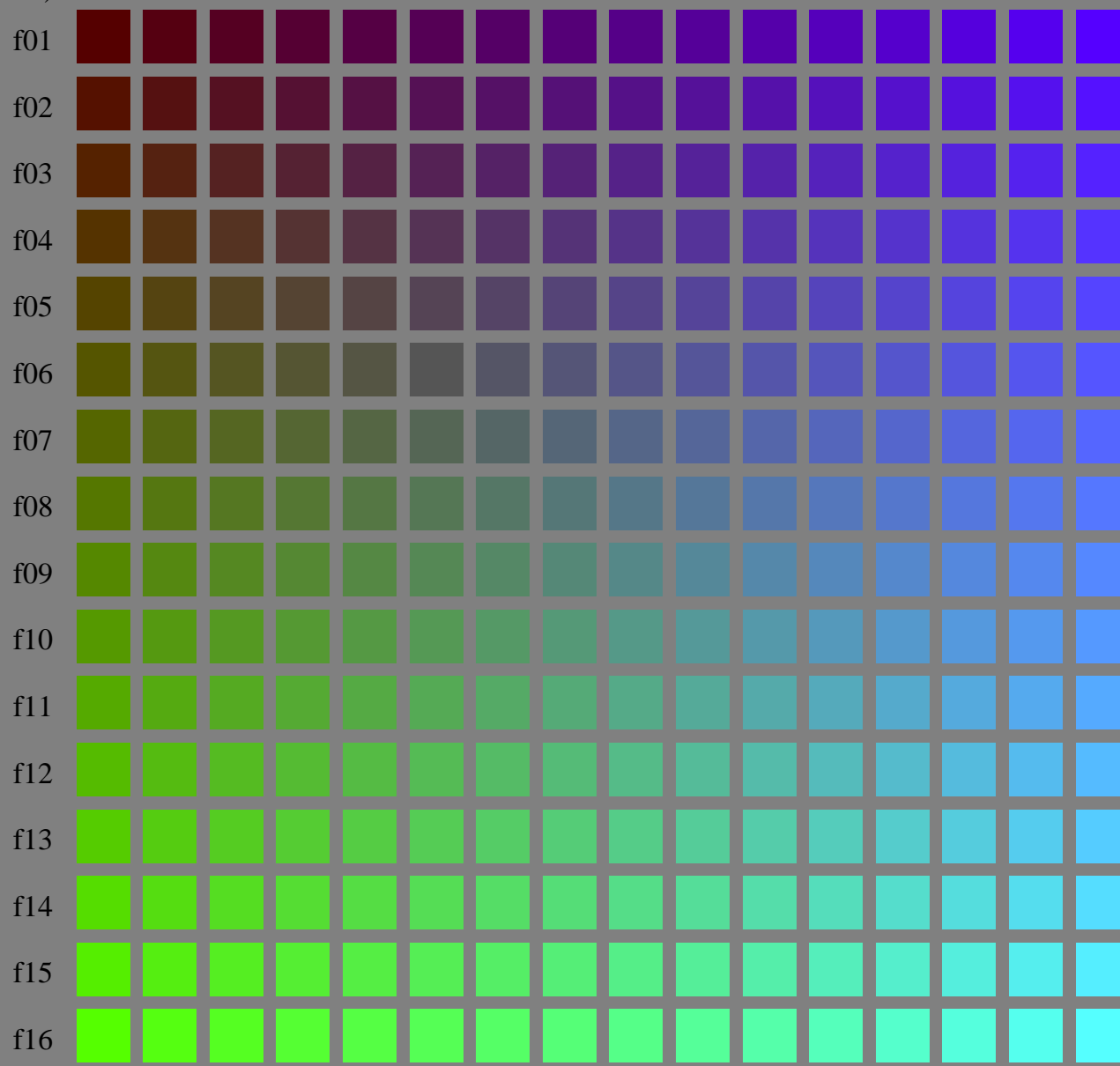
See for similar files: <http://www.ps.bam.de/LE33/>  
Technical information: <http://www.ps.bam.de>  
Version 2.1, io=1,1?

BAM registration: 20050501-LE33/10Q/Q33E04SP.PS/.PDF  
application for measurement of printer systems  
BAM material: code=rh4ta

/LE33 Form: 5/16, Serie: 1/1, Page: 5 Page count: 5

( $olv3^* = 0.333, l3^*, v3^*$ )

( $olv3^* = 0.333, 0, 1$ )



( $olv3^* = 0.333, 1, 0$ )

LE330-7, Test chart file with 16x16x16 (=4096) colours; Device dependent colour coordinates  $olv3^*$  of ISO/IEC 15775:1999 as input;  $r3^* = o3^* = 0.333 = \text{const.}$

BAM-test chart no. LE33; Systems ORS18 and TLS00  
4096 (=16x16x16) colours of ISO/IEC 15775:1999

input:  $olv3^*$  *setrgbcolor*  
output: *Startup (S) data dependend*

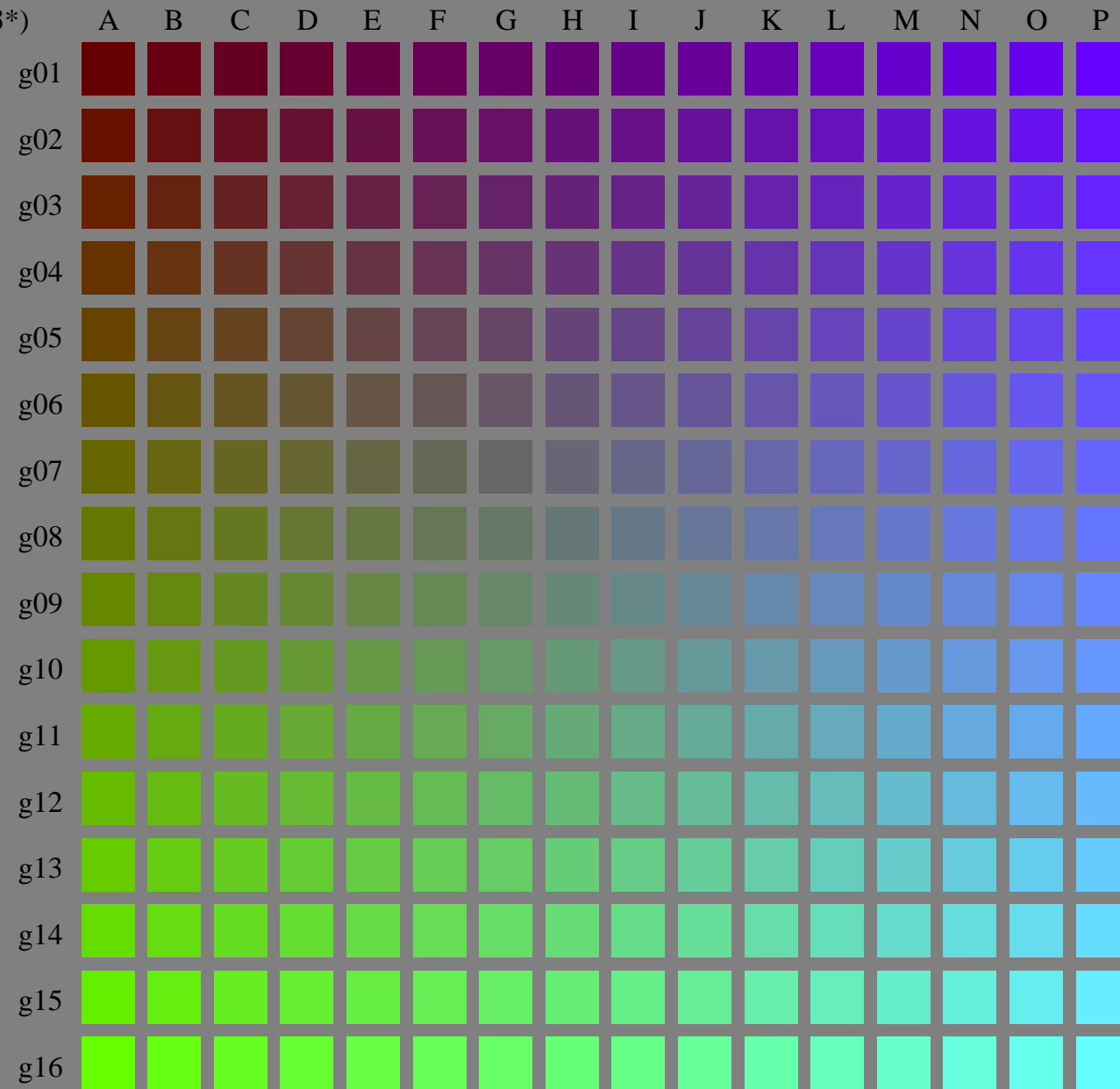
See for similar files: <http://www.ps.bam.de/LE33/>  
Technical information: <http://www.ps.bam.de> Version 2.1, io=1,1?

BAM registration: 20050501-LE33/10Q/Q33E05SP.PS/.PDF  
application for measurement of printer systems

LE33 Form: 6/16, Serie: 1/1, Page: 6 Page count: 6  
BAM material: code=rh4ta

( $olv3^* = 0.4, l3^*, v3^*$ )

( $olv3^* = 0.4, 0, 1$ )



( $olv3^* = 0.4, 1, 0$ )

LE330-7, Test chart file with 16x16x16 (=4096) colours; Device dependent colour coordinates  $olv3^*$  of ISO/IEC 15775:1999 as input;  $r3^* = o3^* = 0.4 = \text{const.}$

BAM-test chart no. LE33; Systems ORS18 and TLS00  
4096 (=16x16x16) colours of ISO/IEC 15775:1999

input:  $olv3^*$  *setrgbcolor*  
output: *Startup (S) data dependend*

See for similar files: <http://www.ps.bam.de/LE33/>  
Technical information: <http://www.ps.bam.de> Version 2.1, io=1,1?

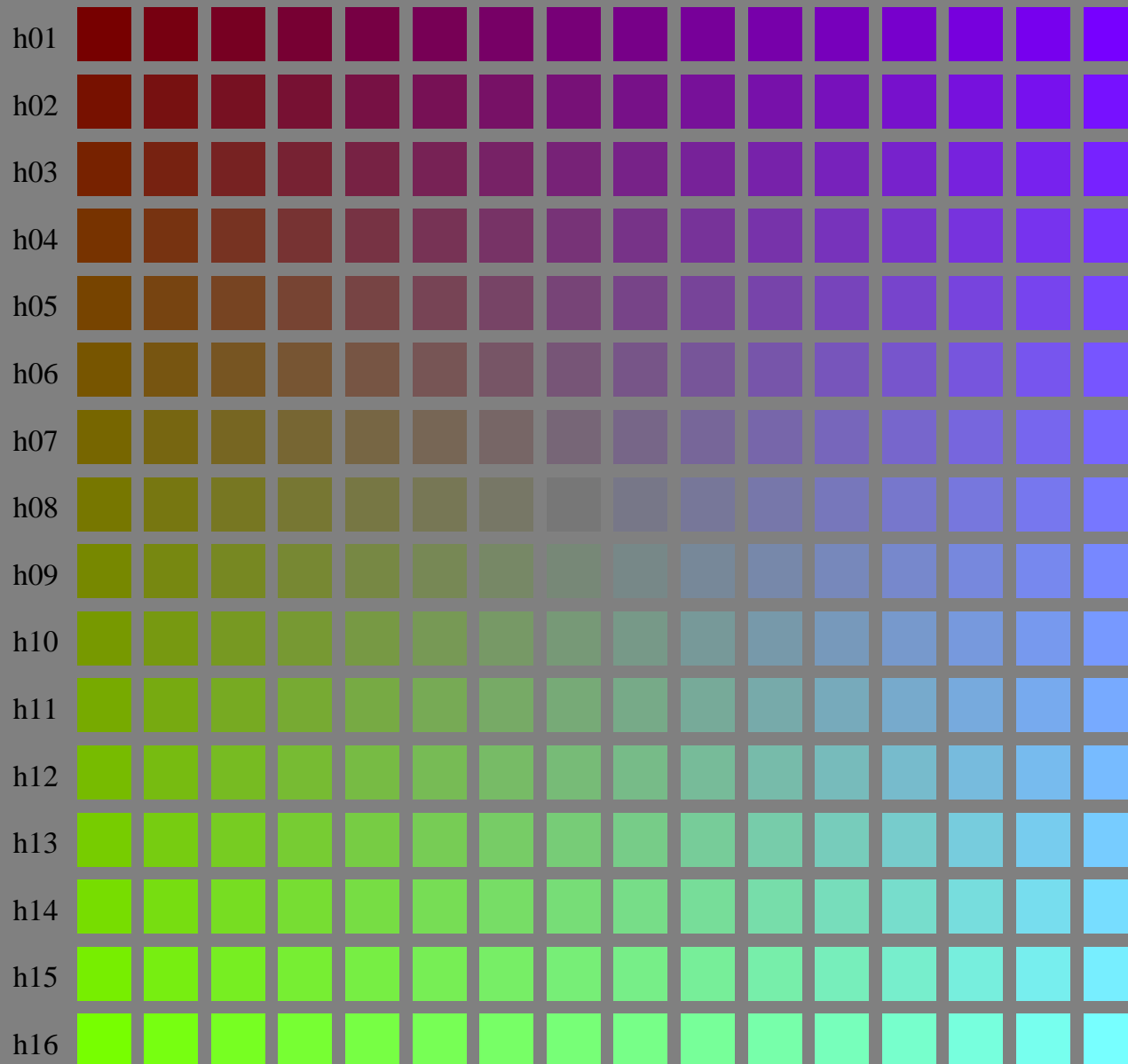
BAM registration: 20050501-LE33/10Q/Q33E06SP.PS/.PDF  
application for measurement of printer systems

LE33 Form: 7/16, Serie: 1/1, Page: 7 Page count: 7

BAM material: code=rh4ta

( $olv3^* = 0.466, l3^*, v3^*$ )

( $olv3^* = 0.466, 0, 1$ )



( $olv3^* = 0.466, 1, 0$ )

LE330-7, Test chart file with 16x16x16 (=4096) colours; Device dependent colour coordinates  $olv3^*$  of ISO/IEC 15775:1999 as input;  $r3^* = o3^* = 0.466 = \text{const.}$

BAM-test chart no. LE33; Systems ORS18 and TLS00  
4096 (=16x16x16) colours of ISO/IEC 15775:1999

input:  $olv3^*$  *setrgbcolor*  
output: *Startup (S) data dependend*

See for similar files: <http://www.ps.bam.de/LE33/>  
Technical information: <http://www.ps.bam.de> Version 2.1, io=1,1?

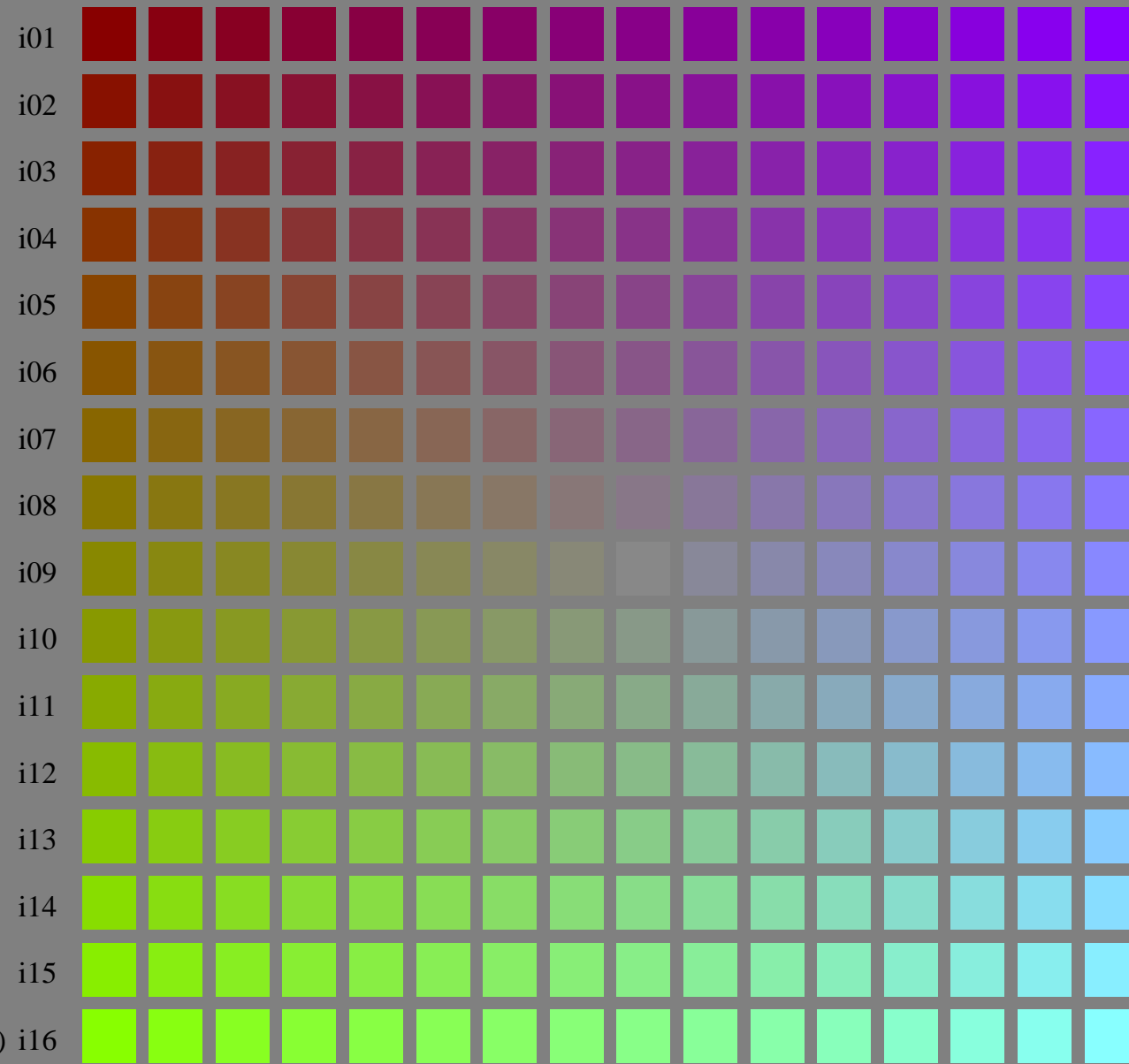
BAM registration: 20050501-LE33/10Q/Q33E07SP.PS/.PDF  
application for measurement of printer systems  
BAM material: code=rh4ta

LE33 Form: 8/16, Serie: 1/1, Page: 8 Page count: 8



(olv3\* = 0.533, 13\*, v3\*)

(olv3\* = 0.533, 0, 1)



(olv3\* = 0.533, 1, 0) i16

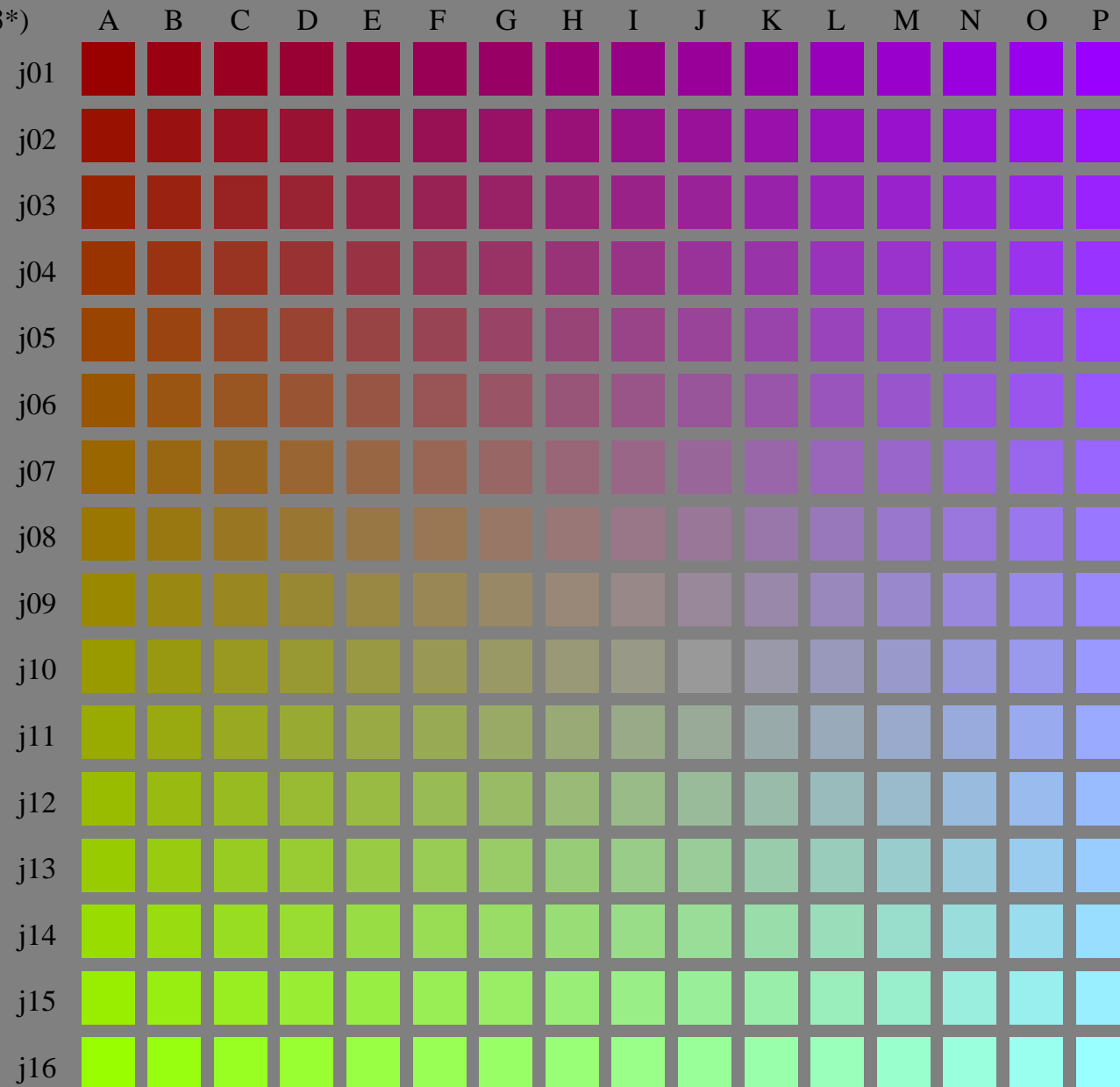
See for similar files: <http://www.ps.bam.de/LE33/>  
Technical information: <http://www.ps.bam.de> Version 2.1, io=1,1?

BAM registration: 20050501-LE33/10Q/Q33E08SP.PS/.PDF  
application for measurement of printer systems

LE33 Form: 9/16, Serie: 1/1, Page: 9 Page count: 9  
BAM material: code=rh4ta

(olv3\* = 0.6, l3\*, v3\*)

(olv3\* = 0.6, 0, 1)



See for similar files: <http://www.ps.bam.de/LE33/>  
Technical information: <http://www.ps.bam.de> Version 2.1, io=1,1?

BAM registration: 20050501-LE33/10Q/Q33E09SP.PS/.PDF  
application for measurement of printer systems

BAM material: code=rh4ta  
/LE33 Form: 10/16; Serie: 1/1, Page: 10 Page count: 10

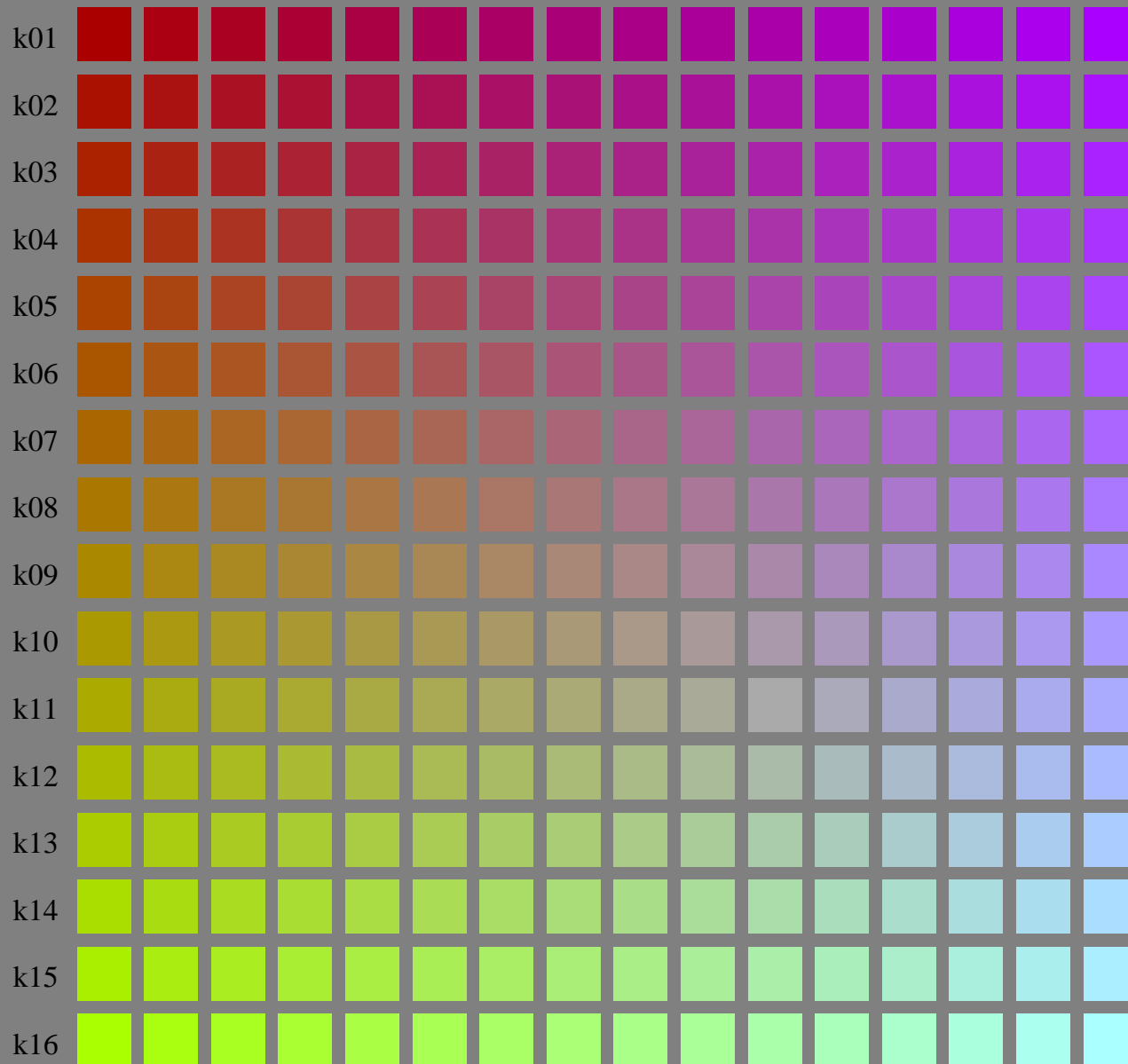
LE330-7, Test chart file with 16x16x16 (=4096) colours; Device dependent colour coordinates olv3\* of ISO/IEC 15775:1999 as input; r3\* = o3\* = 0.6 = const.

BAM-test chart no. LE33; Systems ORS18 and TLS00  
4096 (=16x16x16) colours of ISO/IEC 15775:1999

input: olv3\* setrgbcolor  
output: Startup (S) data dependend

( $olv3^* = 0.666, l3^*, v3^*$ )

( $olv3^* = 0.666, 0, 1$ )



( $olv3^* = 0.666, 1, 0$ )

LE330-7, Test chart file with 16x16x16 (=4096) colours; Device dependent colour coordinates  $olv3^*$  of ISO/IEC 15775:1999 as input;  $r3^* = o3^* = 0.666 = \text{const.}$

BAM-test chart no. LE33; Systems ORS18 and TLS00  
4096 (=16x16x16) colours of ISO/IEC 15775:1999

input:  $olv3^*$  *setrgbcolor*  
output: *Startup (S) data dependend*

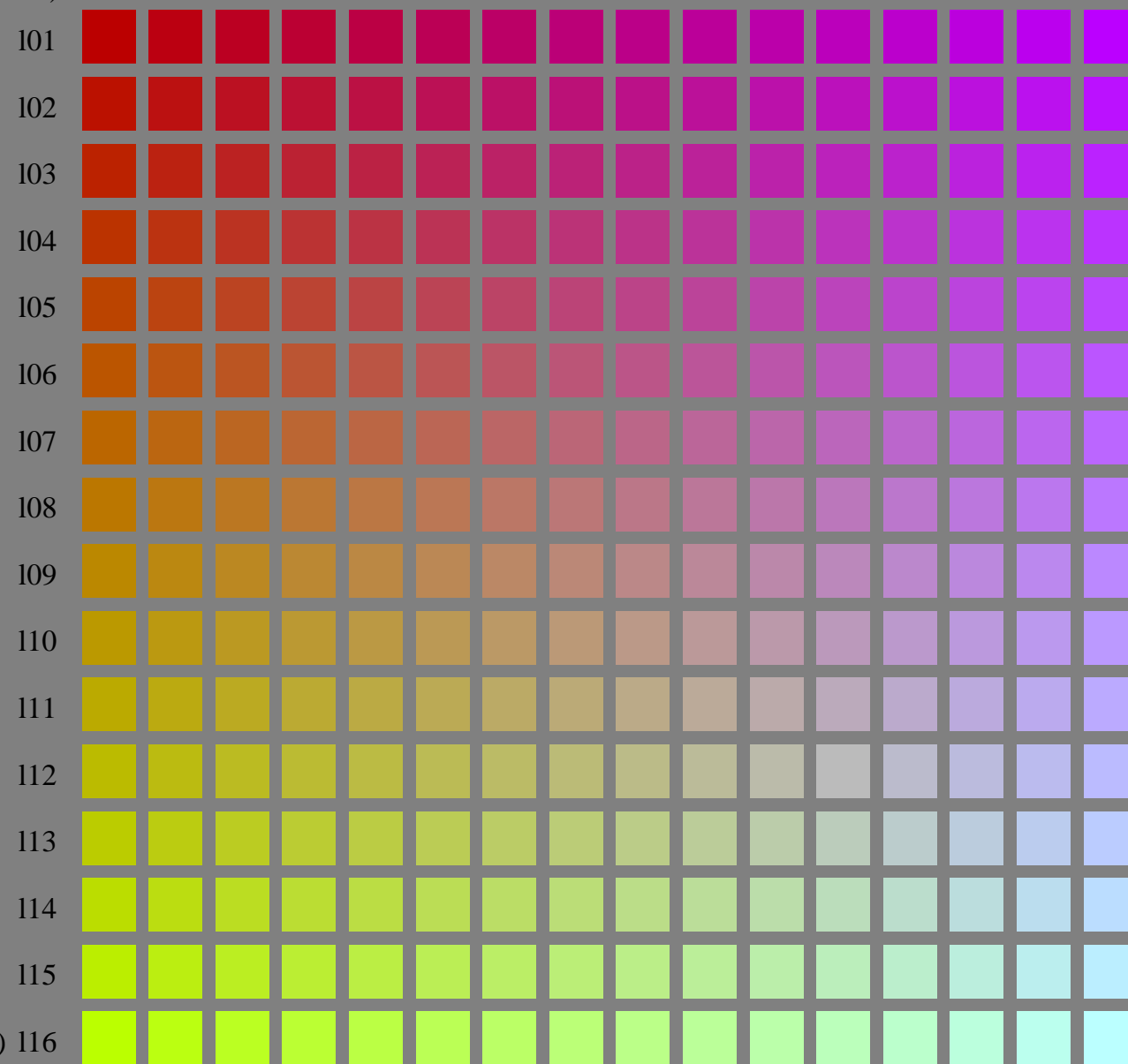
See for similar files: <http://www.ps.bam.de/LE33/>  
Technical information: <http://www.ps.bam.de> Version 2.1, io=1,1?

BAM registration: 20050501-LE33/10Q/Q33E0ASP.PS/.PDF  
application for measurement of printer systems

LE33 Form: 11/16; Serie: 1/1, Page: 11 Page count: 11  
BAM material: code=rh4ta

( $olv3^* = 0.733, 13^*, v3^*$ )

( $olv3^* = 0.733, 0, 1$ )



( $olv3^* = 0.733, 1, 0$ )

LE330-7, Test chart file with 16x16x16 (=4096) colours; Device dependent colour coordinates  $olv3^*$  of ISO/IEC 15775:1999 as input;  $r3^* = o3^* = 0.733 = \text{const.}$

BAM-test chart no. LE33; Systems ORS18 and TLS00  
4096 (=16x16x16) colours of ISO/IEC 15775:1999

input:  $olv3^*$  *setrgbcolor*  
output: *Startup (S) data dependend*

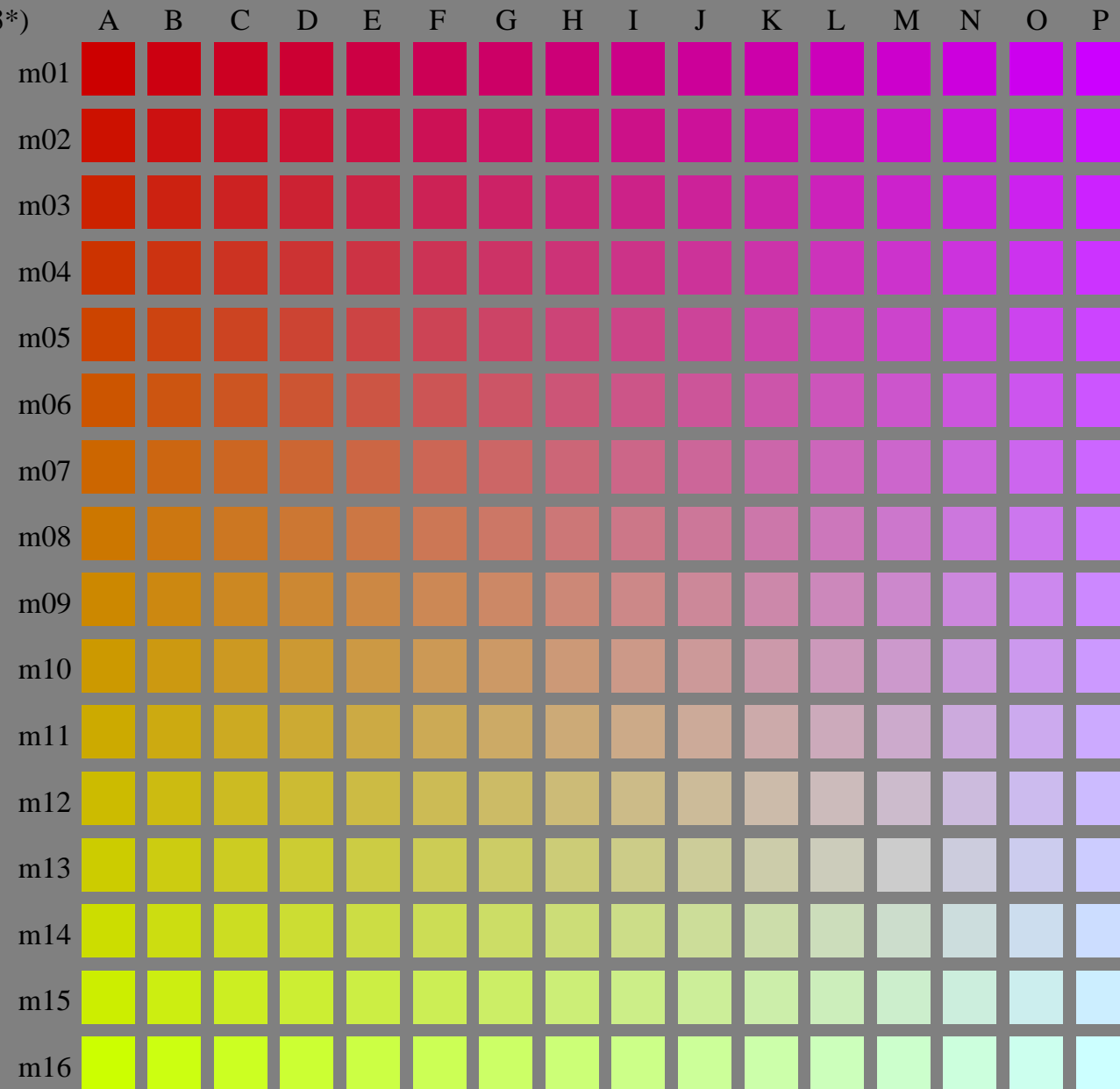
See for similar files: <http://www.ps.bam.de/LE33/>  
Technical information: <http://www.ps.bam.de> Version 2.1, io=1,1?

BAM registration: 20050501-LE33/10Q/Q33E0BSP.PS/.PDF  
application for measurement of printer systems

LE33 Form: 12/16; Serie: 1/1, Page: 12, Page count: 12  
BAM material: code=rh4ta

(olv3\* = 0.8, l3\*, v3\*)

(olv3\* = 0.8, 0, 1)



(olv3\* = 0.8, 1, 0)

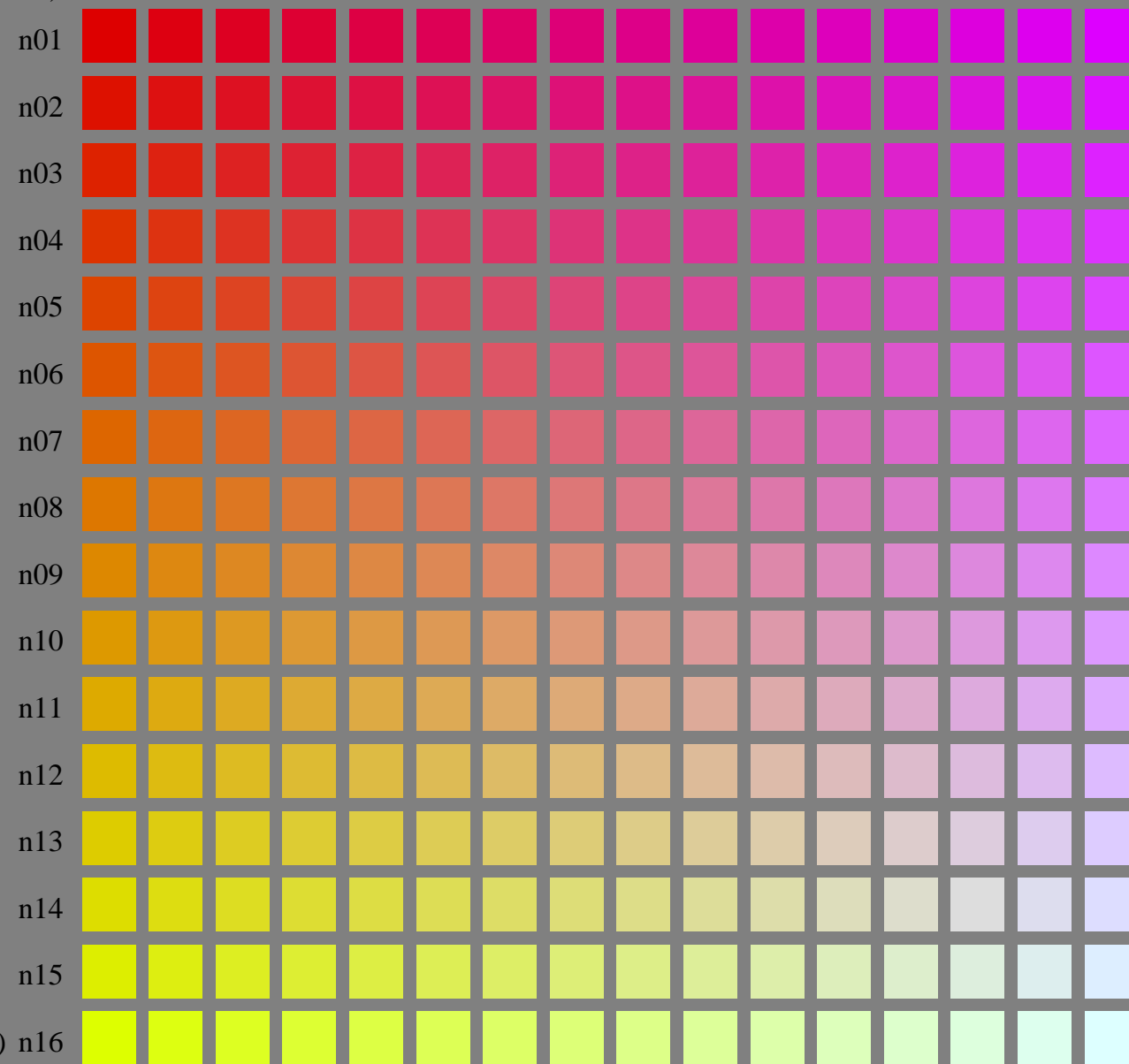
See for similar files: <http://www.ps.bam.de/LE33/>  
Technical information: <http://www.ps.bam.de> Version 2.1, io=1,1?

BAM registration: 20050501-LE33/10Q/Q33E0CSP.PS/.PDF  
application for measurement of printer systems

BAM material: code=rh4ta  
/LE33 Form: 13/16; Serie: 1/1, Page: 13 Page count: 13

( $olv3^* = 0.866, 13^*, v3^*$ )

( $olv3^* = 0.866, 0, 1$ )



( $olv3^* = 0.866, 1, 0$ )

LE330-7, Test chart file with 16x16x16 (=4096) colours; Device dependent colour coordinates  $olv3^*$  of ISO/IEC 15775:1999 as input;  $r3^* = o3^* = 0.866 = \text{const.}$

BAM-test chart no. LE33; Systems ORS18 and TLS00  
4096 (=16x16x16) colours of ISO/IEC 15775:1999

input:  $olv3^*$  setrgbcolor  
output: Startup (S) data dependend

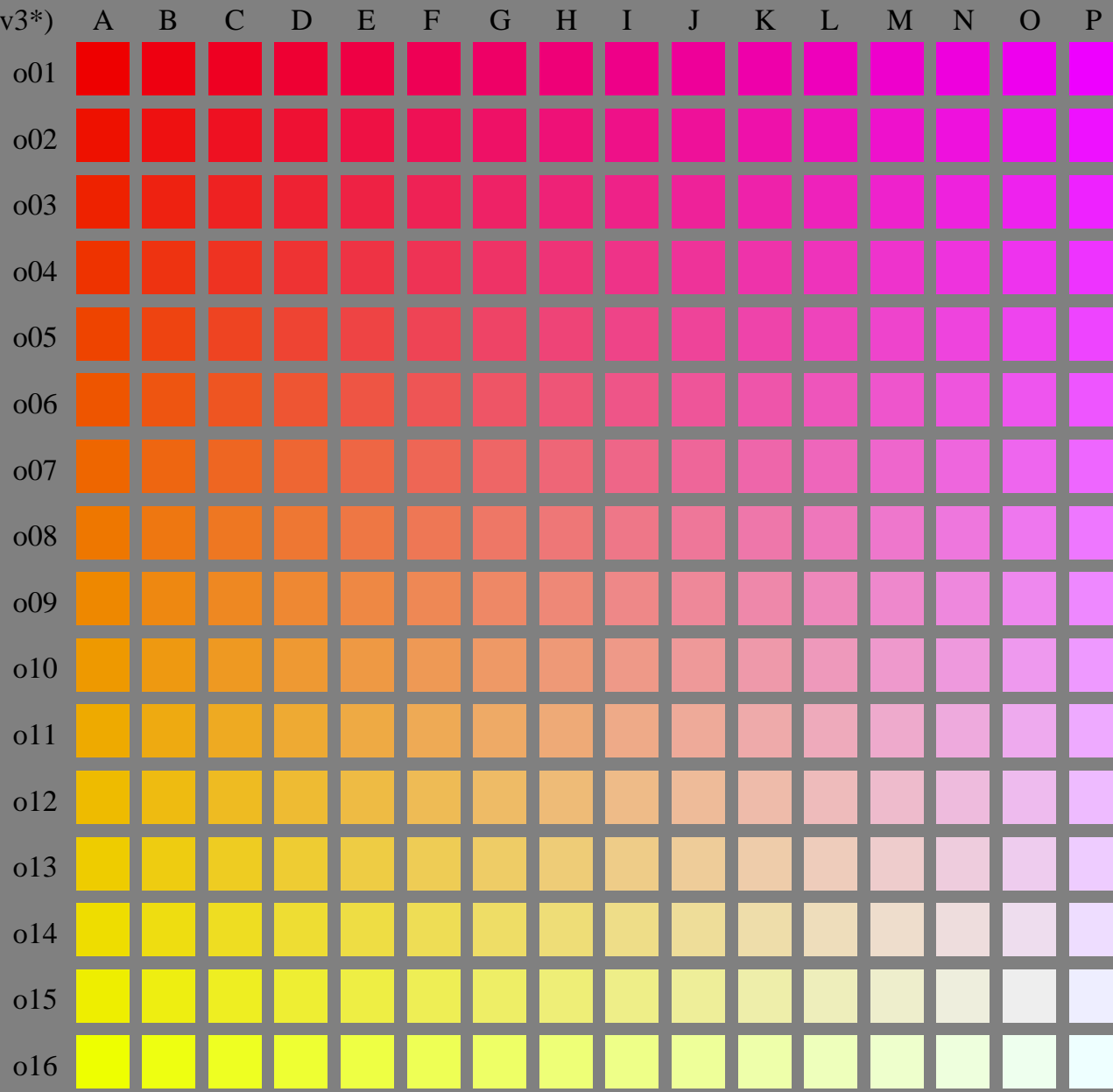
See for similar files: <http://www.ps.bam.de/LE33/>  
Technical information: <http://www.ps.bam.de> Version 2.1, io=1,1?

BAM registration: 20050501-LE33/10Q/Q33E0DSP.PS/.PDF  
application for measurement of printer systems

LE33 Form: 14/16; Serie: 1/1, Page: 14 Page count: 14  
BAM material: code=rh4ta

( $olv3^* = 0.933, l3^*, v3^*$ )

( $olv3^* = 0.933, 0, 1$ )



( $olv3^* = 0.933, 1, 0$ )

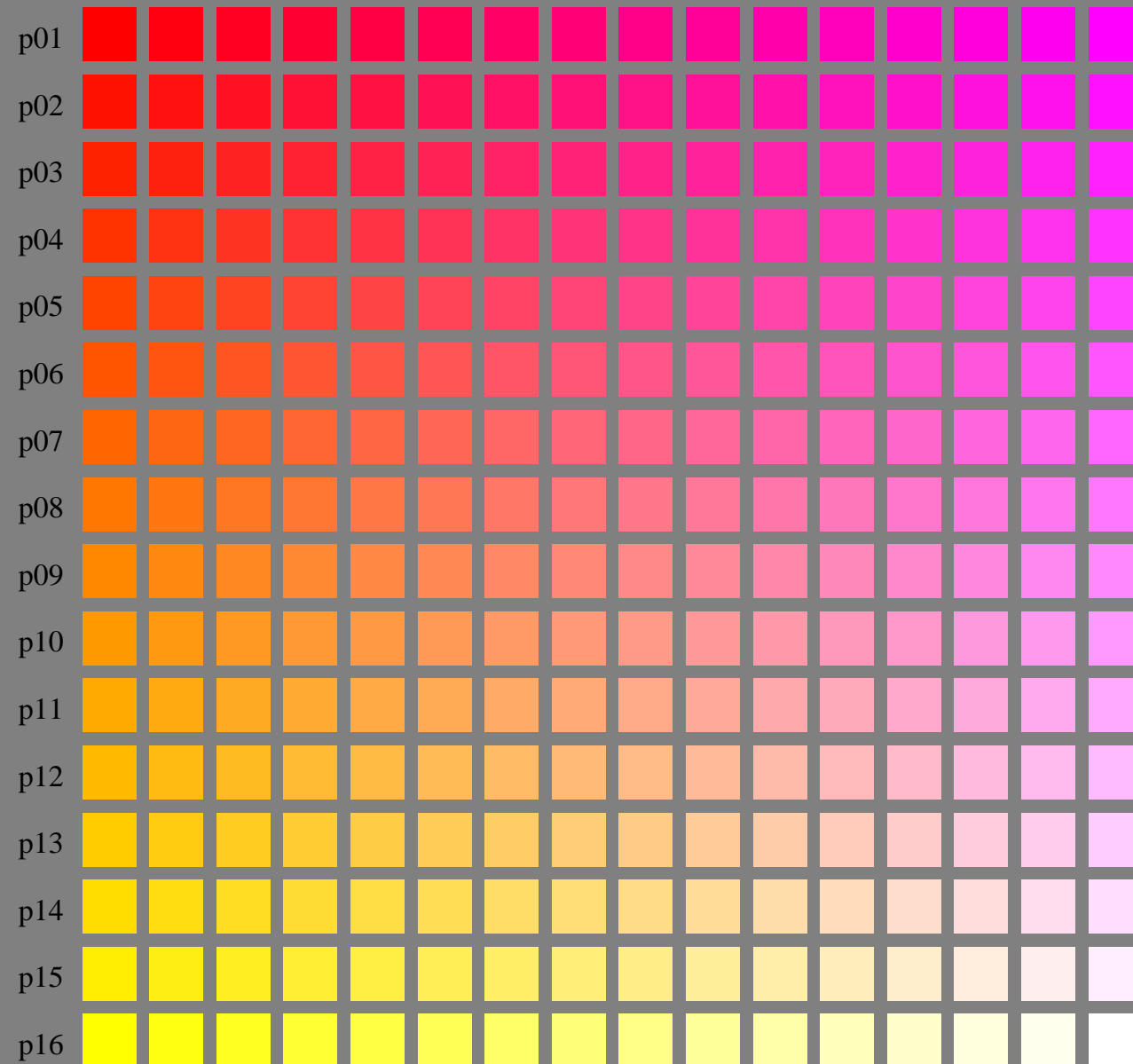
See for similar files: <http://www.ps.bam.de/LE33/>  
Technical information: <http://www.ps.bam.de> Version 2.1, io=1,1?

BAM registration: 20050501-LE33/10Q/Q33E0ESP.PS/.PDF  
application for measurement of printer systems

BAM material: code=rh4ta  
/LE33 Form: 15/16; Serie: 1/1, Page: 15 Page count: 15

( $olv3^* = 1.0, l3^*, v3^*$ )

( $olv3^* = 1.0, 0, 1$ )



( $olv3^* = 1.0, 1, 0$ )

LE330-7, Test chart file with 16x16x16 (=4096) colours; Device dependent colour coordinates  $olv3^*$  of ISO/IEC 15775:1999 as input;  $r3^* = o3^* = 1.0 = \text{const.}$

BAM-test chart no. LE33; Systems ORS18 and TLS00  
4096 (=16x16x16) colours of ISO/IEC 15775:1999

input:  $olv3^*$  *setrgbcolor*  
output: *Startup (S) data dependend*

See for similar files: <http://www.ps.bam.de/LE33/>  
Technical information: <http://www.ps.bam.de> Version 2.1, io=1,1?

BAM registration: 20050501-LE33/10Q/Q33E0FSP.PS/.PDF  
application for measurement of printer systems

LE33 Form: 16/16; Serie: 1/1, Page: 16 Page count: 16

BAM material: code=rh4ta