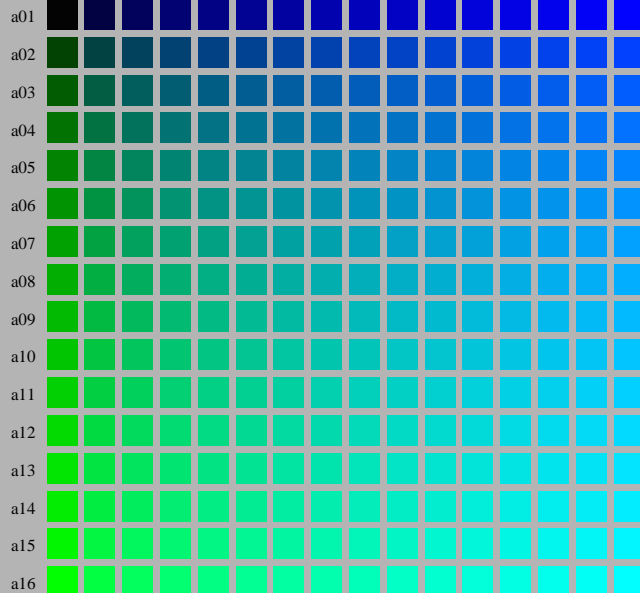


( $olv3^* = 0.0, l3^*, v3^*$ )

( $olv3^* = 0.0, 0, 1$ )



( $olv3^* = 0.0, 1, 0$ )

See for similar files: <http://www.ps.bam.de/LE33/>  
Technical information: <http://www.ps.bam.de> Version 2.1, io=1,1; FORS; oORS; CIELAB

BAM registration: 20050501-LE33/10Q/Q33E00F1.PS/.TXT  
application for measurement of printer systems  
BAM material: code=ha41a  
Page count: 1

LE330-7. Test chart file with 16x16x16 (=4096) colours; Device dependent colour coordinates  $olv3^*$  of ISO/IEC 15775:1999 as input;  $r3^* = \alpha3^* = 0.0 = \text{const.}$

BAM-test chart no. LE33; Systems ORS18 and TLS00  
4096 (=16x16x16) colours of ISO/IEC 15775:1999

input:  $olv3^* \text{ setrgbcolor}$   
output:  $olv^* \text{ setrgbcolor} / w^* \text{ setgray}$