

(olv3* = 0.0, 13*, v3*)

(olv3* = 0.0, 0, 1)

a01

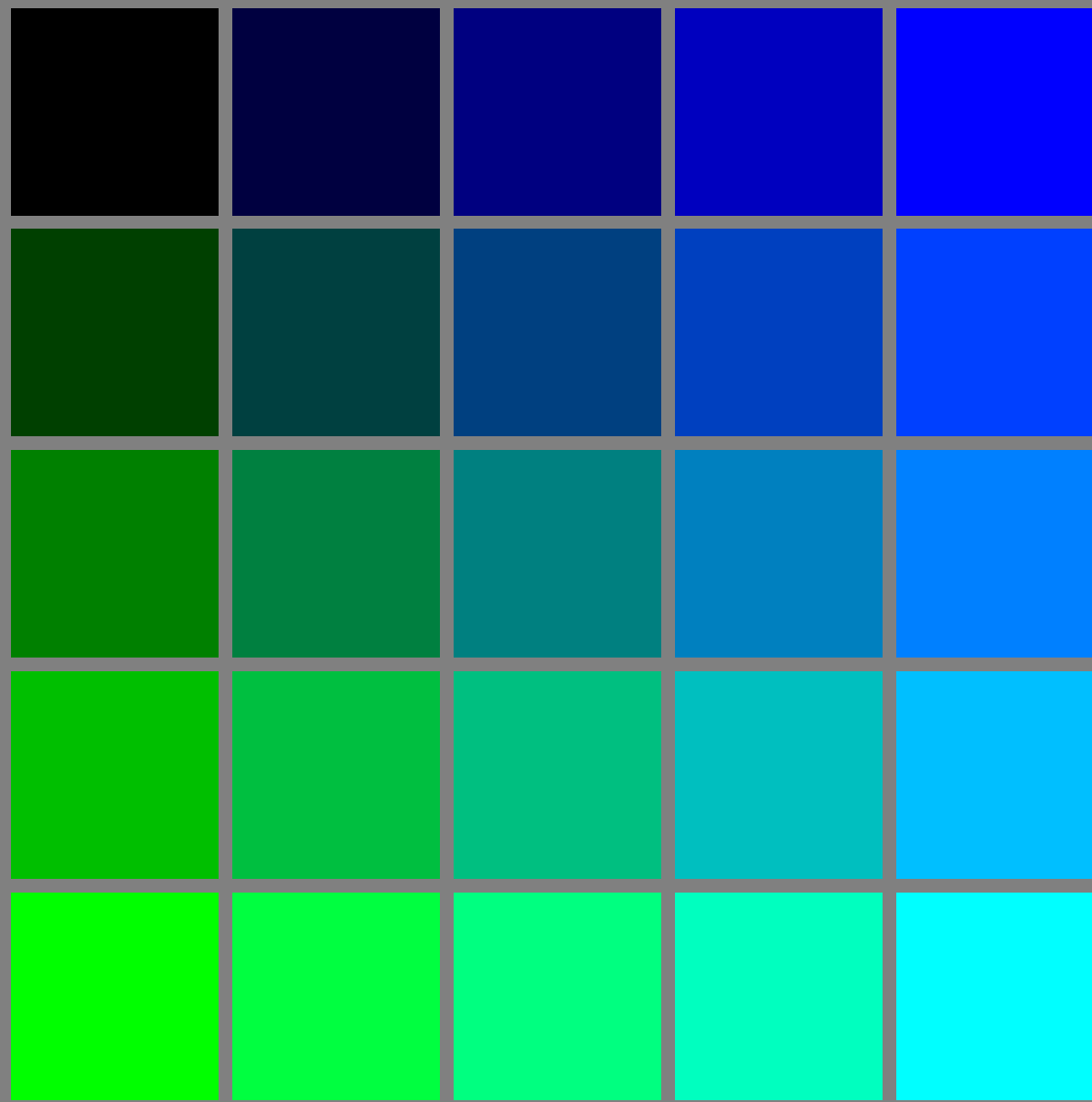
a02

a03

a04

a05

(olv3* = 0.0, 1, 0)



See for similar files: <http://www.ps.bam.de/LE38/>
Technical information: <http://www.ps.bam.de> Version 2.1, io=1,1?

BAM registration: 20040901-LE38/10Q/Q38E00SP.PS/.PDF
application for measurement of printer or monitor systems

BAM material: code=rh4ta
/LE38/ Form: 1/5, Serie: 1/1, Page: 1 Page count: 1

(olv3* = 0.25, 13*, v3*)

(olv3* = 0.25, 0, 1)

b01

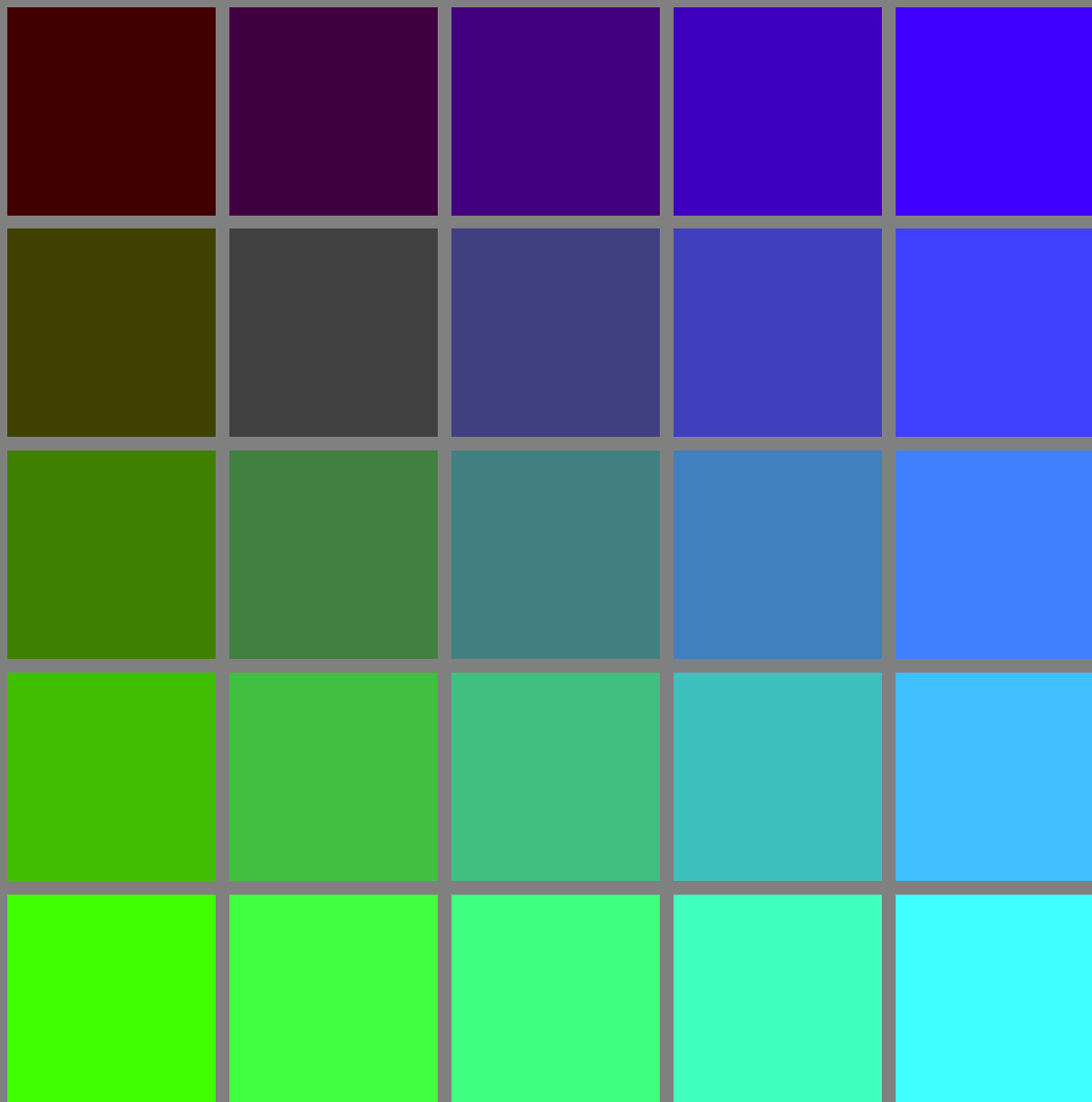
b02

b03

b04

b05

(olv3* = 0.25, 1, 0)



See for similar files: <http://www.ps.bam.de/LE38/>
Technical information: <http://www.ps.bam.de> Version 2.1, io=1,1?

BAM registration: 20040901-LE38/10Q/Q38E01SP.PS/.PDF
application for measurement of printer or monitor systems

BAM material: code=rh4ta
/LE38/ Form: 2/5, Serie: 1/1, Page: 2 Page count: 2

(olv3* = 0.5, 13*, v3*)

(olv3* = 0.5, 0, 1)

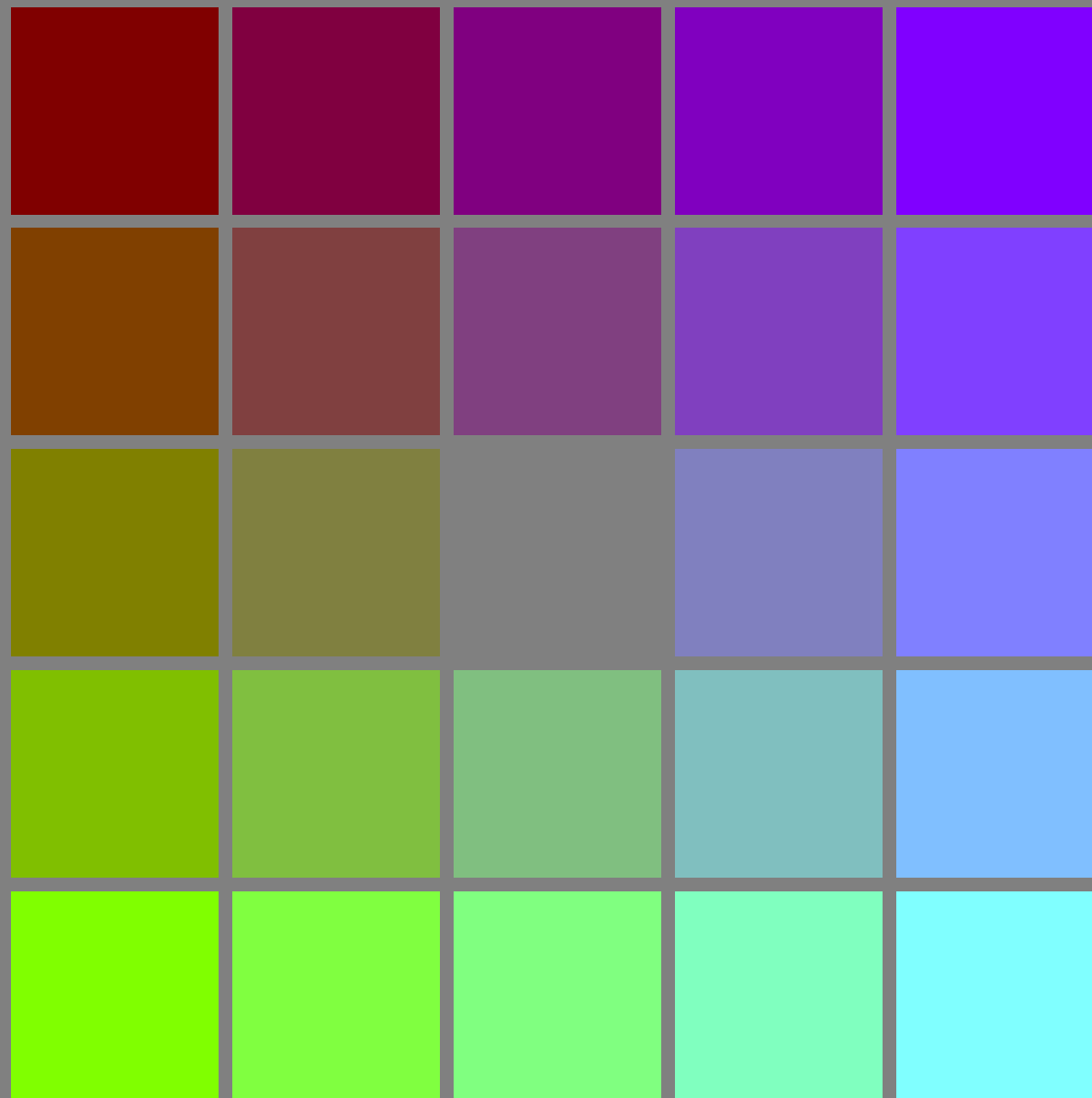
c01

c02

c03

c04

c05



(olv3* = 0.5, 1, 0)

See for similar files: <http://www.ps.bam.de/LE38/>
Technical information: <http://www.ps.bam.de> Version 2.1, io=1,1?

BAM registration: 20040901-LE38/10Q/Q38E02SP.PS/.PDF
application for measurement of printer or monitor systems
BAM material: code=rh4ta
/LE38/ Form: 3/5, Serie: 1/1, Page: 3 Page count: 3

(olv3* = 0.75, 13*, v3*)

(olv3* = 0.75, 0, 1)

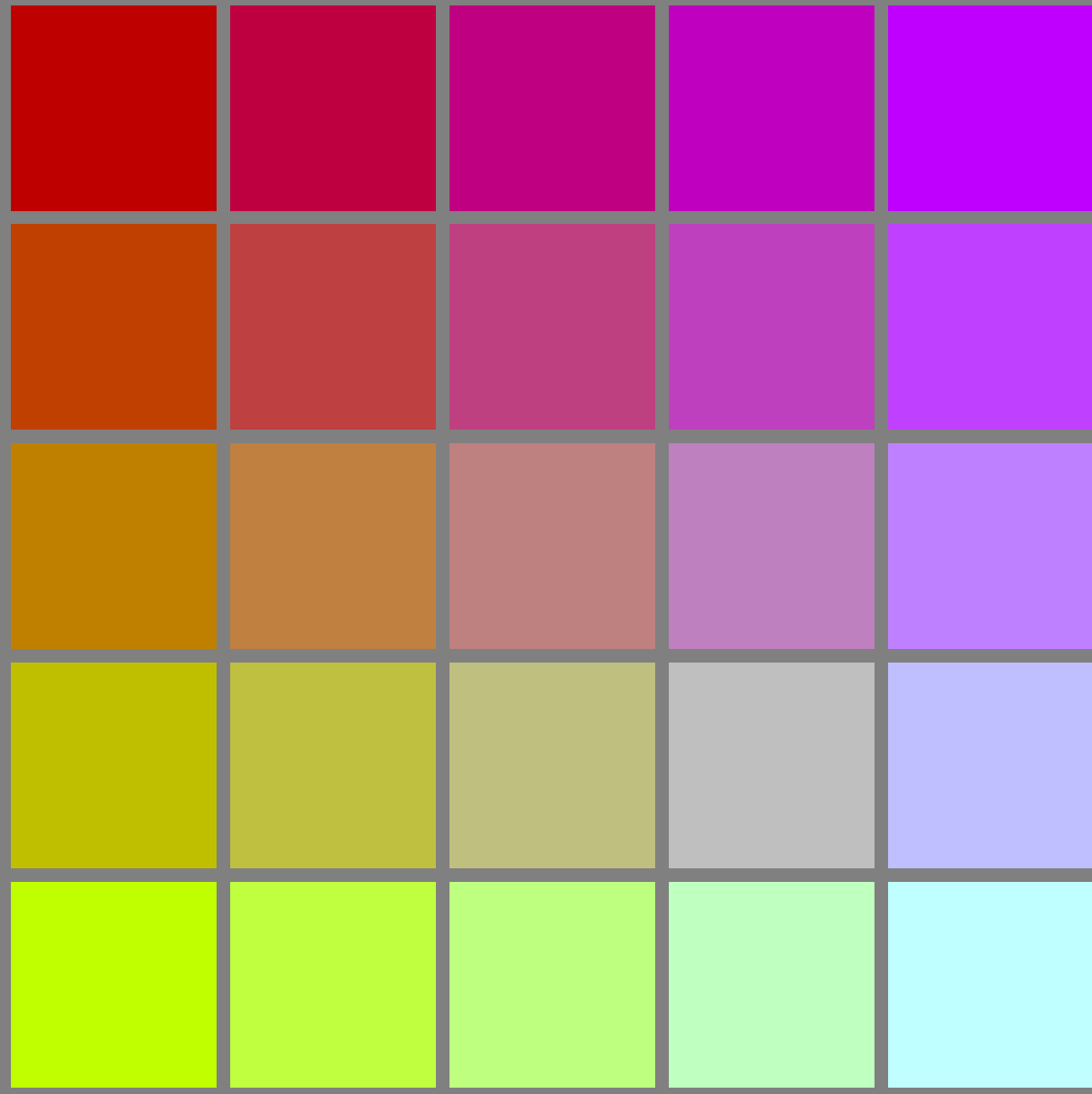
d01

d02

d03

d04

d05



(olv3* = 0.75, 1, 0)

See for similar files: <http://www.ps.bam.de/LE38/>
Technical information: <http://www.ps.bam.de> Version 2.1, io=1,1?

BAM registration: 20040901-LE38/10Q/Q38E03SP.PS/.PDF
application for measurement of printer or monitor systems

BAM material: code=rh4ta
/LE38/ Form: 4/5, Serie: 1/1, Page: 4 Page count: 4

(olv3* = 1.0, 13*, v3*)

(olv3* = 1.0, 0, 1)

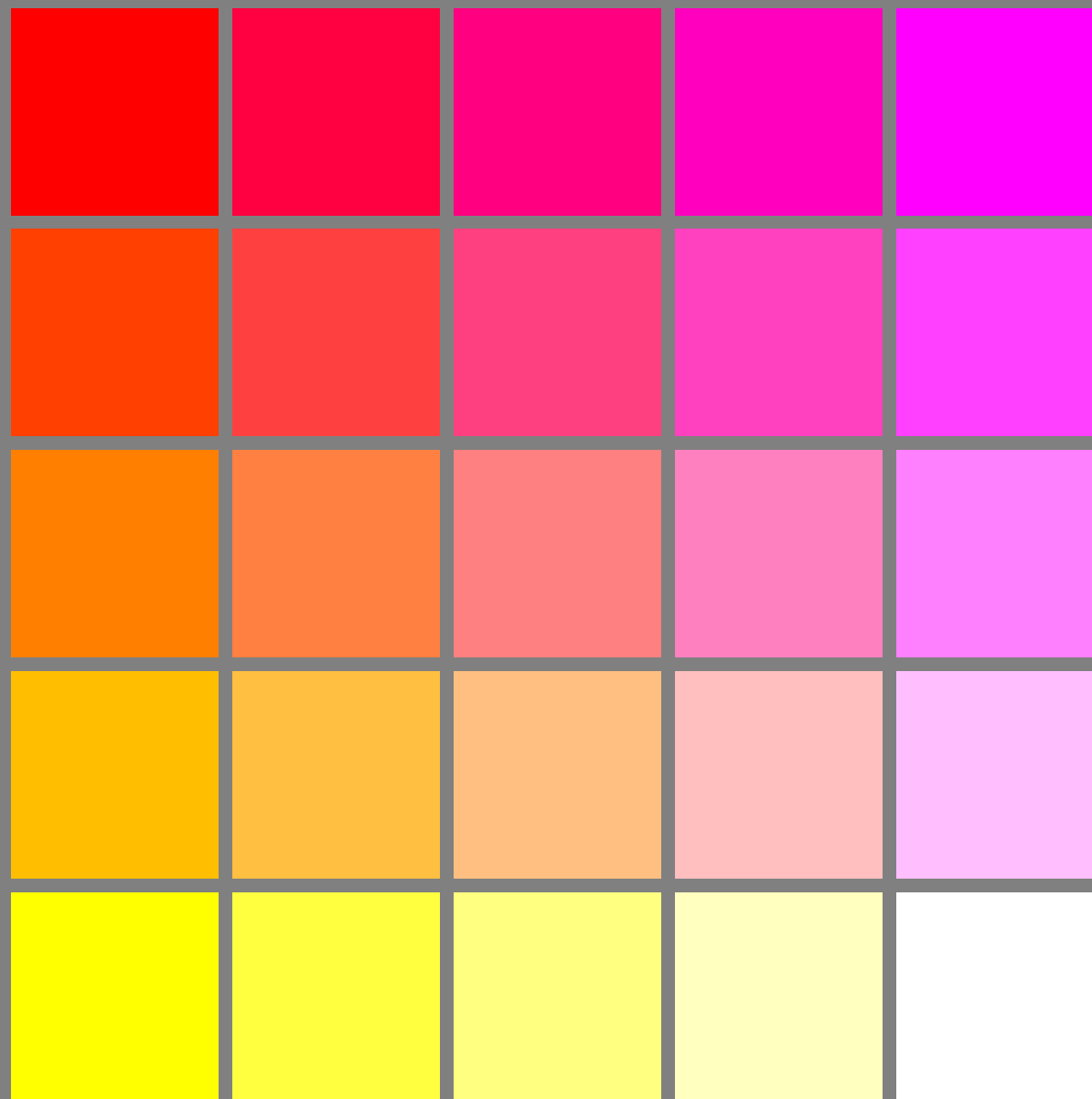
e01

e02

e03

e04

e05



(olv3* = 1.0, 1, 0)

BAM registration: 20040901-LE38/10Q/Q38E04SP.PS/.PDF
application for measurement of printer or monitor systems

BAM material: code=rh4ta
/LE38/ Form: 5/5, Serie: 1/1, Page: 5 Page count: 5

See for similar files: <http://www.ps.bam.de/LE38/>
Technical information: <http://www.ps.bam.de> Version 2.1, io=1,1?