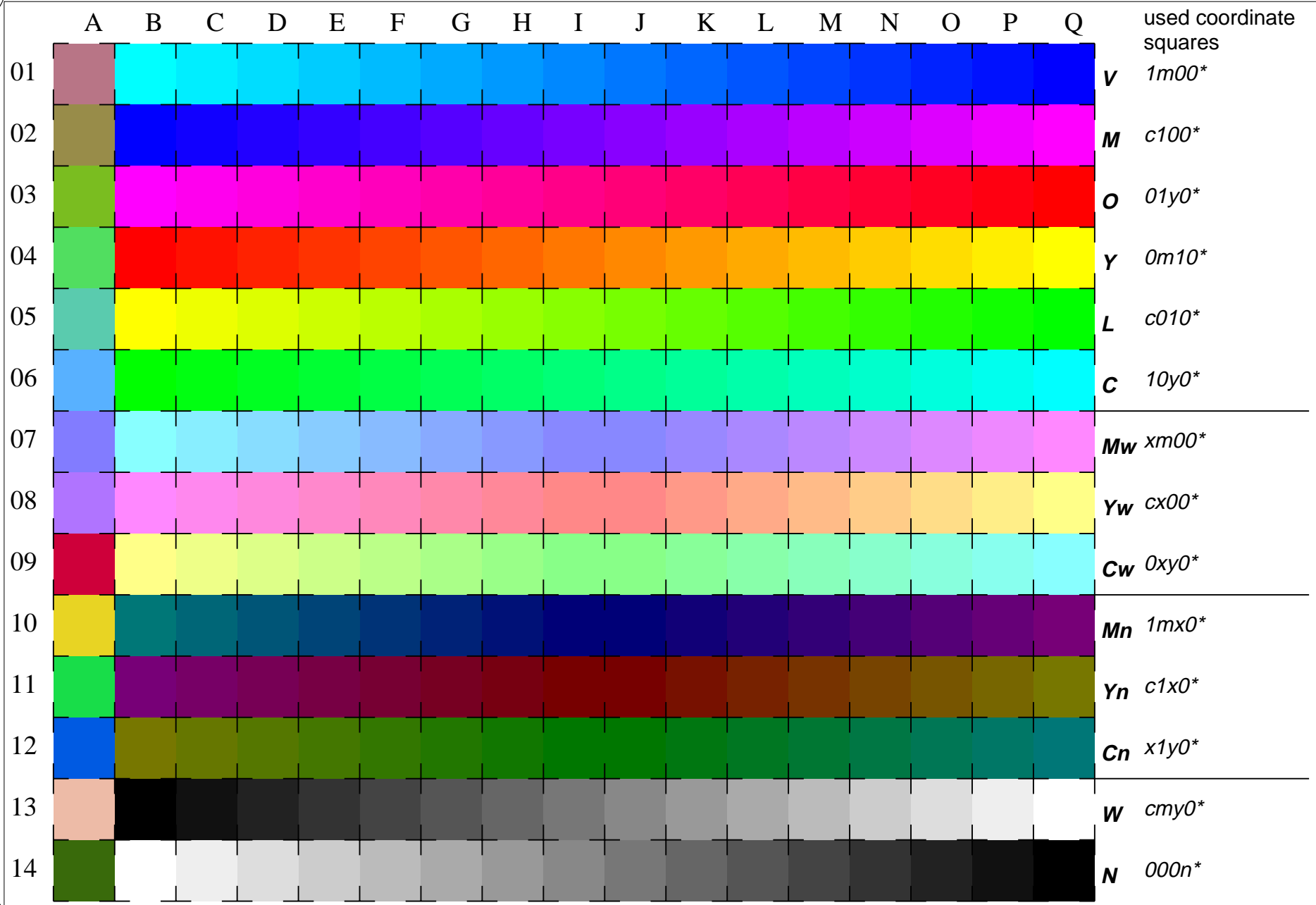


See for similar files: <http://www.ps.bam.de/LE60/LE60.HTM>  
 Information and Order: <http://www.ps.bam.de>  
 Version 2.0, io=0,1; iORS; oORS, CIELAB

BAM registration: 20030101-LE60/10L/L60E01FP.PS/.PDF  
 application for measurement of monitor (Yr=2.5) and printer output  
 BAM material: code=tha4ta



16 equidistant CIELAB steps in *cmy0\**(ORS18) for colour series C-V, V-M, M-O, O-Y, Y-L, L-C, N-W, W-N, Cw-Mw, Mw-Yw, Yw-Cw, Cn-Mn, Mn-Yn, Yn-Cn and 14 CIE-test colours (left)

Test chart LE60: 16 CIELAB steps in *cmy0\**  
 Maximum and half (47%) chroma, CIE-test colours

input,ORS18: *cmy0\** setcmycolor  
 output,ORS18: *olv\** setrgbcolor / *w\** setgray

