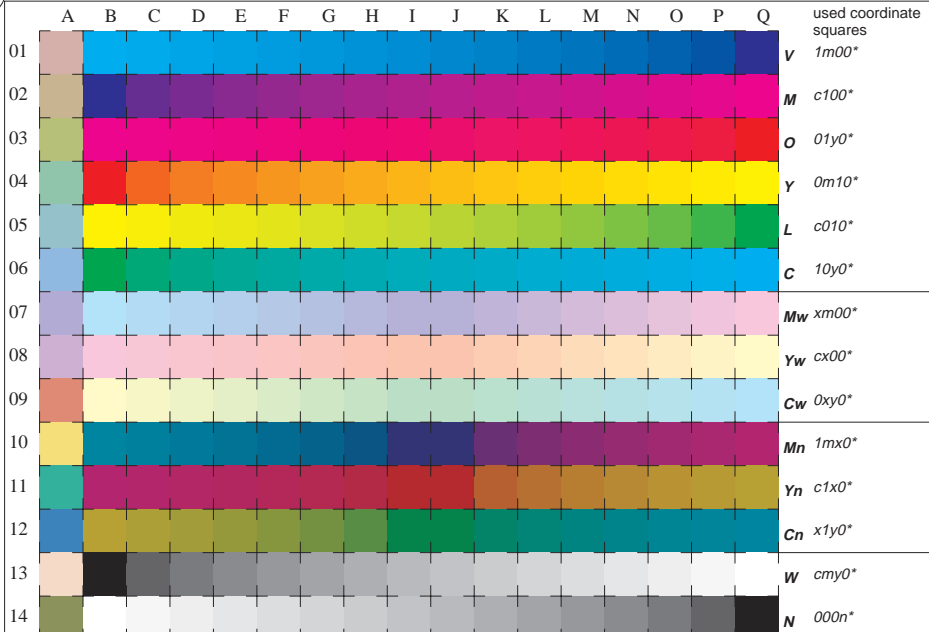


See for similar files: <http://www.ps.bam.de/LE60/LE60.HTM>
 Information and Order: <http://www.ps.bam.de> Version 2.0, io=0, iORS, oORS, CIELAB



16 equidistant CIELAB steps in $cmy0^*(ORS18)$ for colour series C-V, V-M, M-O, O-Y, Y-L, L-C, N-W, W-N, Cw-Mw, Mw-Yw, Yw-Cw, Cn-Mn, Mn-Yn, Yn-Cn and 14 CIE-test colours (left)

Test chart LE60: 16 CIELAB steps in $cmy0^*$
 Maximum and half (47%) chroma, CIE-test colours

input,ORS18: $cmy0^* \text{ setcmykcolor}$
 output,ORS18: $cmy0^* / 000n^* \text{ setcmykcolor}$

BAM registration: 20030101-LE60/10Q/Q60E00F1.PS/.TXT BAM material: code=thata
 application for measurement of monitor (Y1=2.5) and printer output