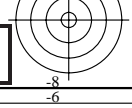
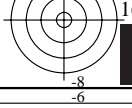
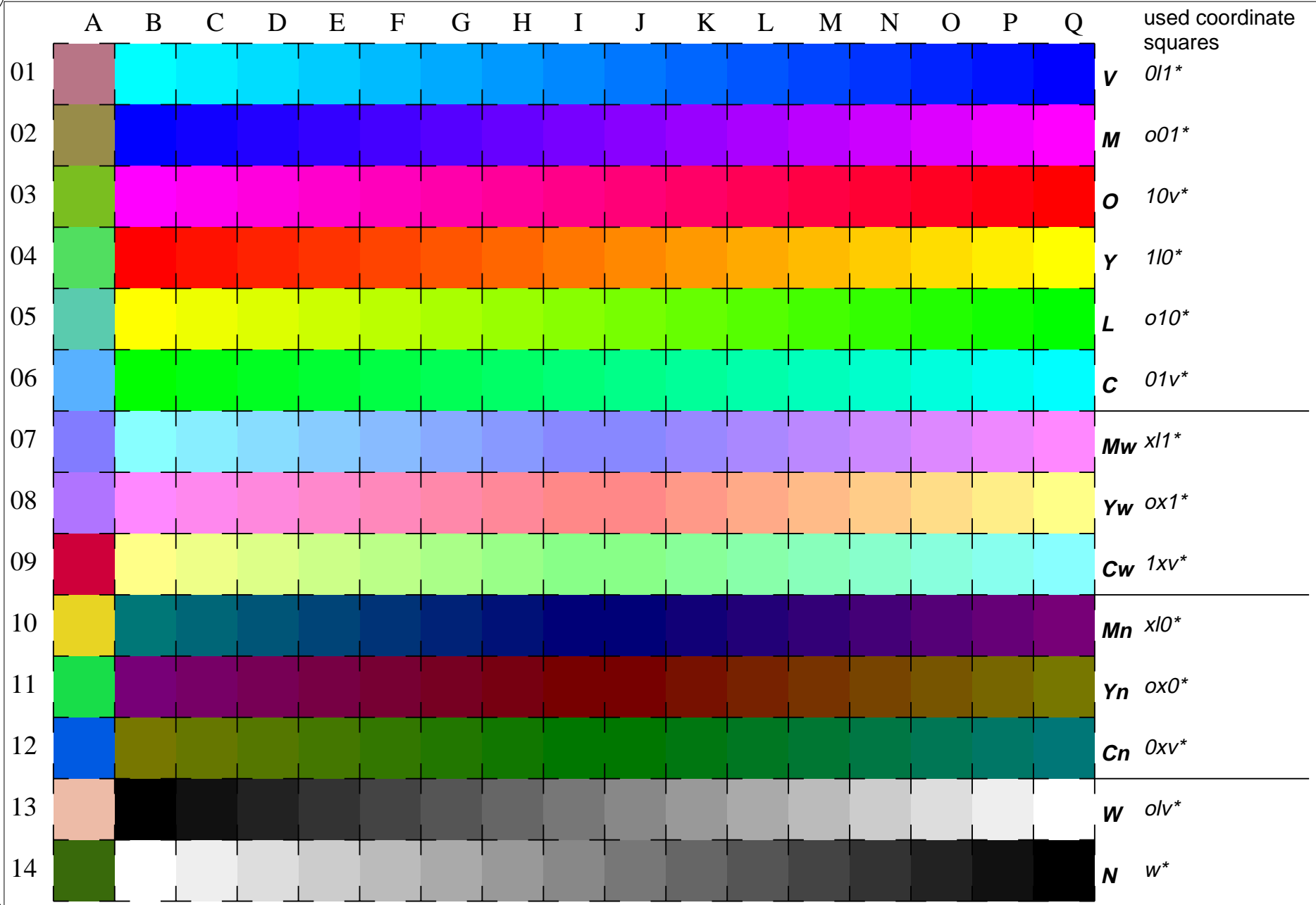


See for similar files: <http://www.ps.bam.de/LE61/LE61.HTM>
 Information and Order: <http://www.ps.bam.de>
 Version 2.0, io=1,1

BAM registration: 20030101-LE61/10L/L61E06NP.PS/.PDF BAM material: code=rha4ta
 application for measurement of monitor (Yr=2.5) and printer output



16 equidistant CIELAB steps in olv^* (ORS18) for colour series C-V, V-M, M-O, O-Y, Y-L, L-C, N-W, W-N, Cw-Mw, Mw-Yw, Yw-Cw, Cn-Mn, Mn-Yn, Yn-Cn and 14 CIE-test colours (left)
 Test chart LE61: 16 CIELAB steps in olv^* input,ORS18: olv^* setrgbcolor
 Maximum and half (47%) chroma, CIE-test colours output,ORS18: no change compared to input

