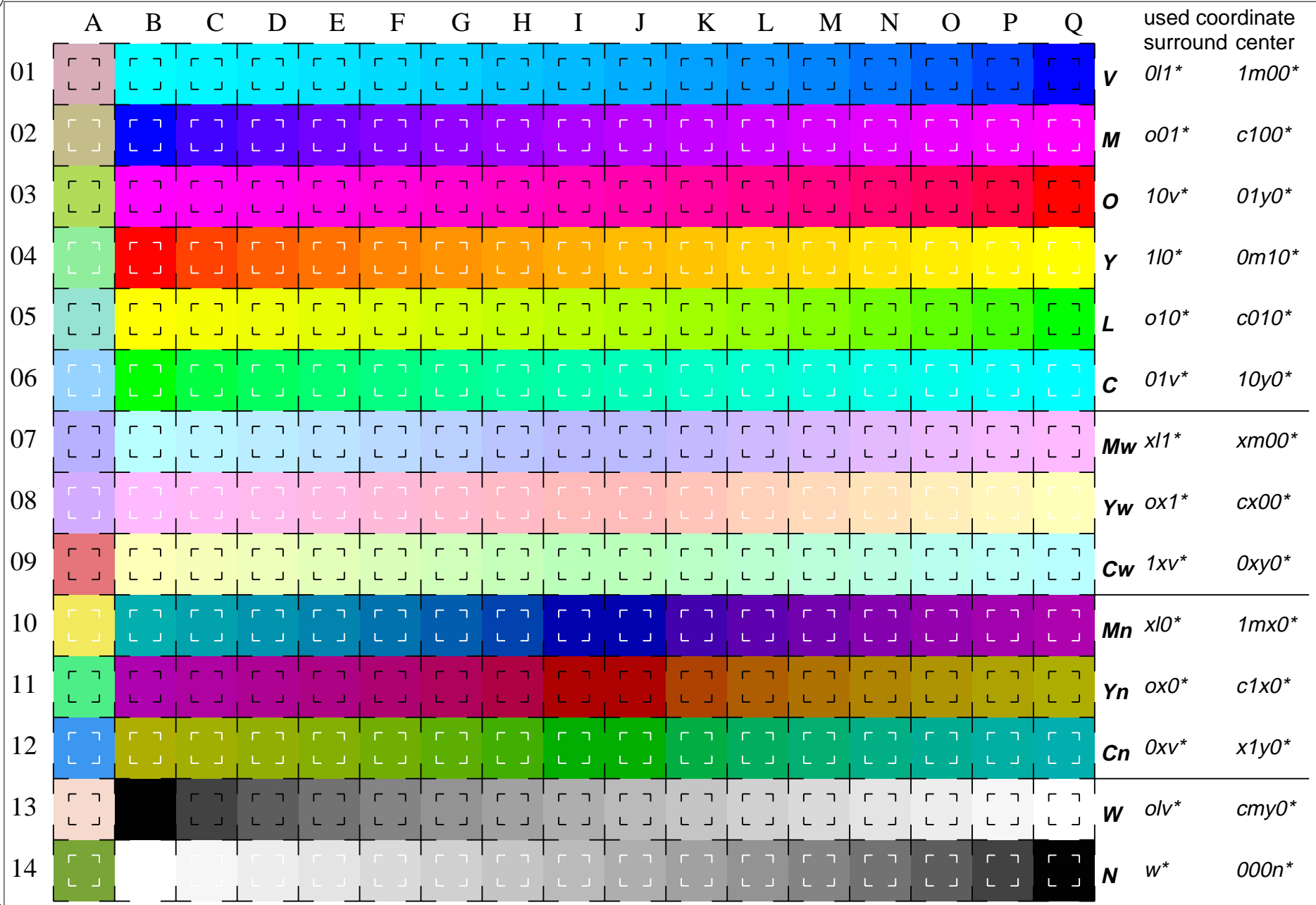


See for similar files: <http://www.ps.bam.de/LE66/10Q/Q66E03FP.PS/.PDF>  
 Information and Order: [http://www.ps.bam.de/Version 2.0, io=1&0,3; iORS; oORS, CIELAB](http://www.ps.bam.de/Version%202.0,%20io=1&0,3;iorS;oorS,CIELAB)

BAM registration: 20030101-LE66/10Q/Q66E03FP.PS/.PDF  
 application for measurement of monitor (Yr=2.5) and printer output  
 BAM material: code=tha4ta



16 equidistant CIELAB steps in *olv\*(ORS18)*, *cmy0\*(ORS18)* for colour series C-V, V-M, M-O, O-Y, Y-L, L-C, N-W, W-N, Cw-Mw, Mw-Yw, Yw-Cw, Cn-Mn, Mn-Yn, Yn-Cn and 14 CIE-test colours (left)

Test chart LE66: 16 CIELAB steps in *olv\**, *cmy0\**  
 Maximum and half (47%) chroma, CIE-test colours

input,ORS18: *olv\* setrgb.../cmy0\* setcmyk...*  
 output,ORS18: *olv\*/www\* setrgbcolor*

