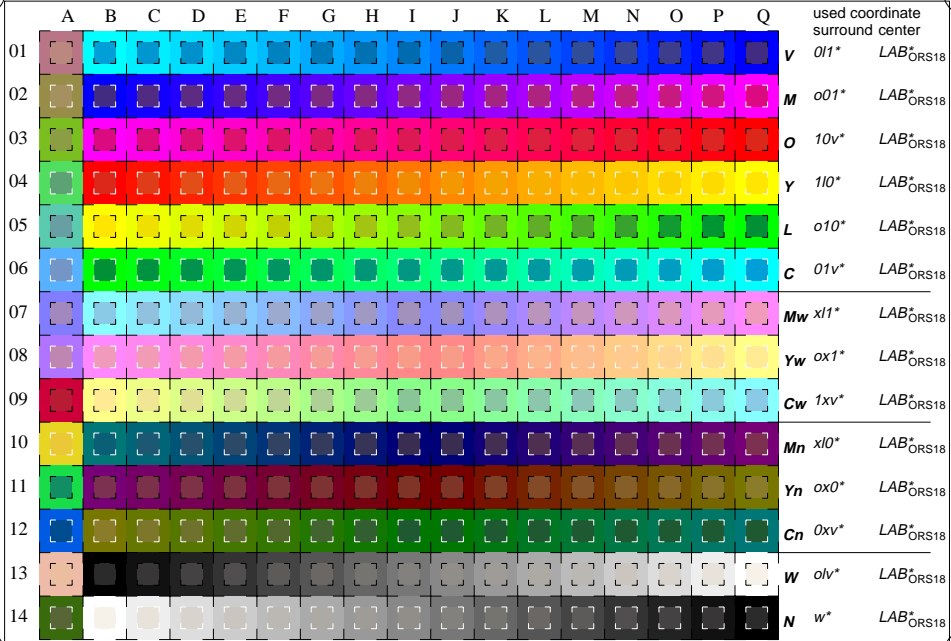


See for similar files: <http://www.ps.bam.de/LE67/LE67.HTM>
Information and Order: <http://www.ps.bam.de> Version 2.0, io=1&5,1&5



BAM registration: 20030101-LE67/L67E00N1.PS/.TXT
application for measurement of monitor (Y1=2.5) and printer output
BAM material: code=thata4

16 equidistant CIELAB steps in olv*(ORS18), LAB*(ORS18) for colour series C-V, V-M, M-O, O-Y, Y-L, L-C, N-W, W-N, Cw-Mw, Mw-Yw, Yw-Cw, Cn-Mn, Mn-Yn, Yn-Cn and 14 CIE-test colours (left)

Test chart LE67: 16 CIELAB steps in olv*, LAB*
Maximum and half (47%) chroma, CIE-test colours

input,ORS18: olv* setrgb.../LAB* setcolor
output,ORS18: no change compared to input