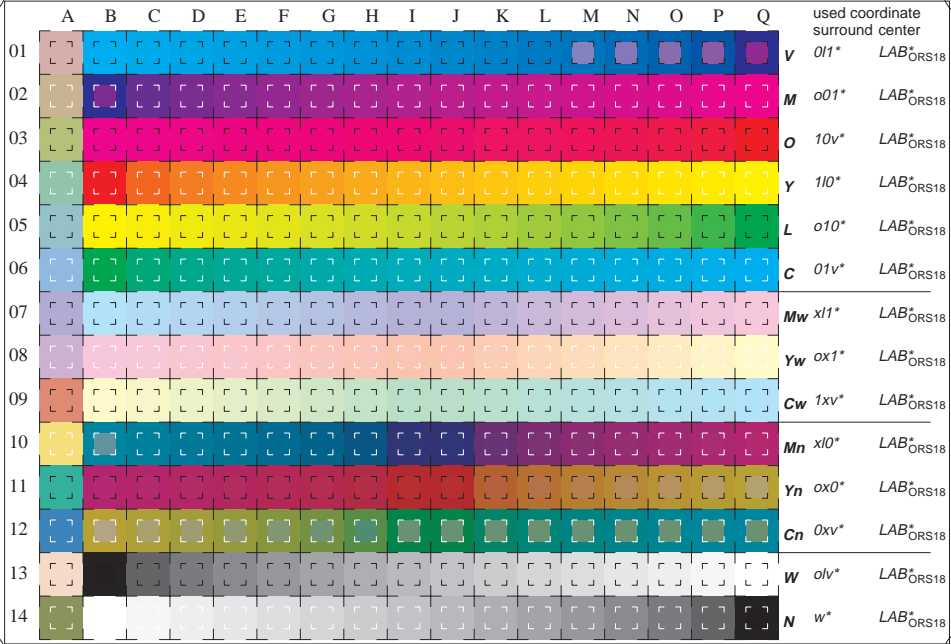


See for similar files: <http://www.ps.bam.de/LE67/LE67.HTM>
 Information and Order: <http://www.ps.bam.de> Version 2.0, i=0; i&5;0; iORS; oORS, CIELAB



BAM registration: 20030101-LE67/10Q/Q67E00F1.PS/.TXT
 application for measurement of monitor (X1=2.5) and printer output
 BAM material: code=thata4

16 equidistant CIELAB steps in *olv*(ORS18)*, *LAB*(ORS18)* for colour series C-V, V-M, M-O, O-Y, Y-L, L-C, N-W, W-N, Cw-Mw, Mw-Yw, Yw-Cw, Cn-Mn, Mn-Yn, Yn-Cn and 14 CIE-test colours (left)

Test chart LE67: 16 CIELAB steps in *olv**, *LAB**
 Maximum and half (47%) chroma, CIE-test colours
 input,ORS18: *olv* setrgb.../LAB* setcolor*
 output,ORS18: *cmY0*/000n* setcmYcolor*