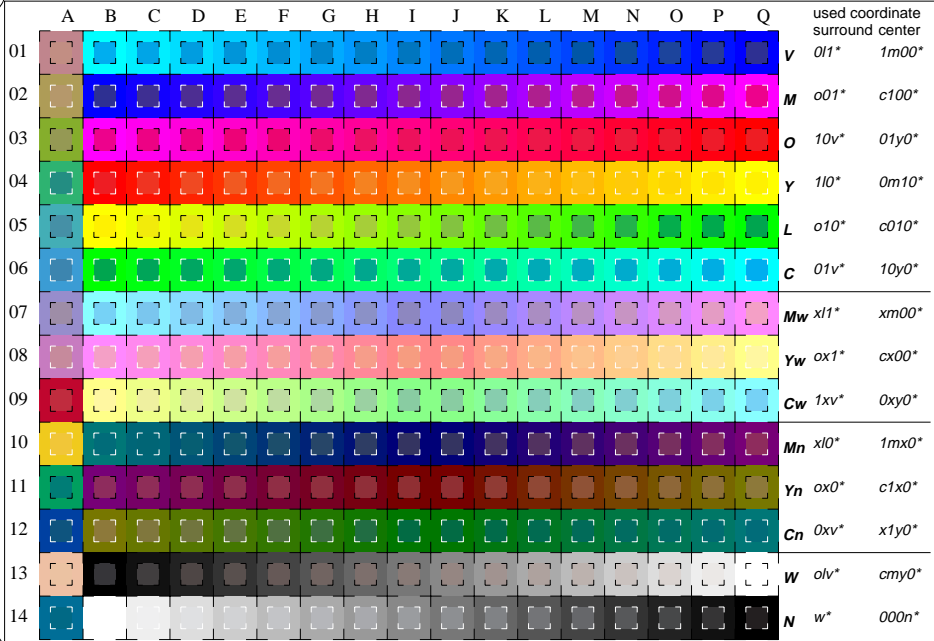


See for similar files: <http://www.ps.bam.de/LE76/LE76.HTM>
 Information and Order: <http://www.ps.bam.de> Version 2.0, io=1&0,1&0



16 equidistant CIELAB steps in olv° (*TL500*), $cmy0^\circ$ (*TL500*) for colour series C-V, V-M, M-O, O-Y, Y-L, L-C, N-W, W-N, Cw-Mw, Mw-Yw, Yw-Cw, Cn-Mn, Mn-Yn, Yn-Cn and 14 CIE-test colours (left)

Test chart LE76: 16 CIELAB steps in olv° , $cmy0^\circ$
 Maximum and half (47%) chroma, CIE-test colours
 input.TLS00: olv° *setrgb...*/ $cmy0^\circ$ *setcmyk...*
 output.TLS00: no change compared to input

BAM registration: 20030101-LE76/L76E00N1.PS/.TXT
 application for measurement of monitor (Y1=2.5) and printer output
 BAM material: code=thata4