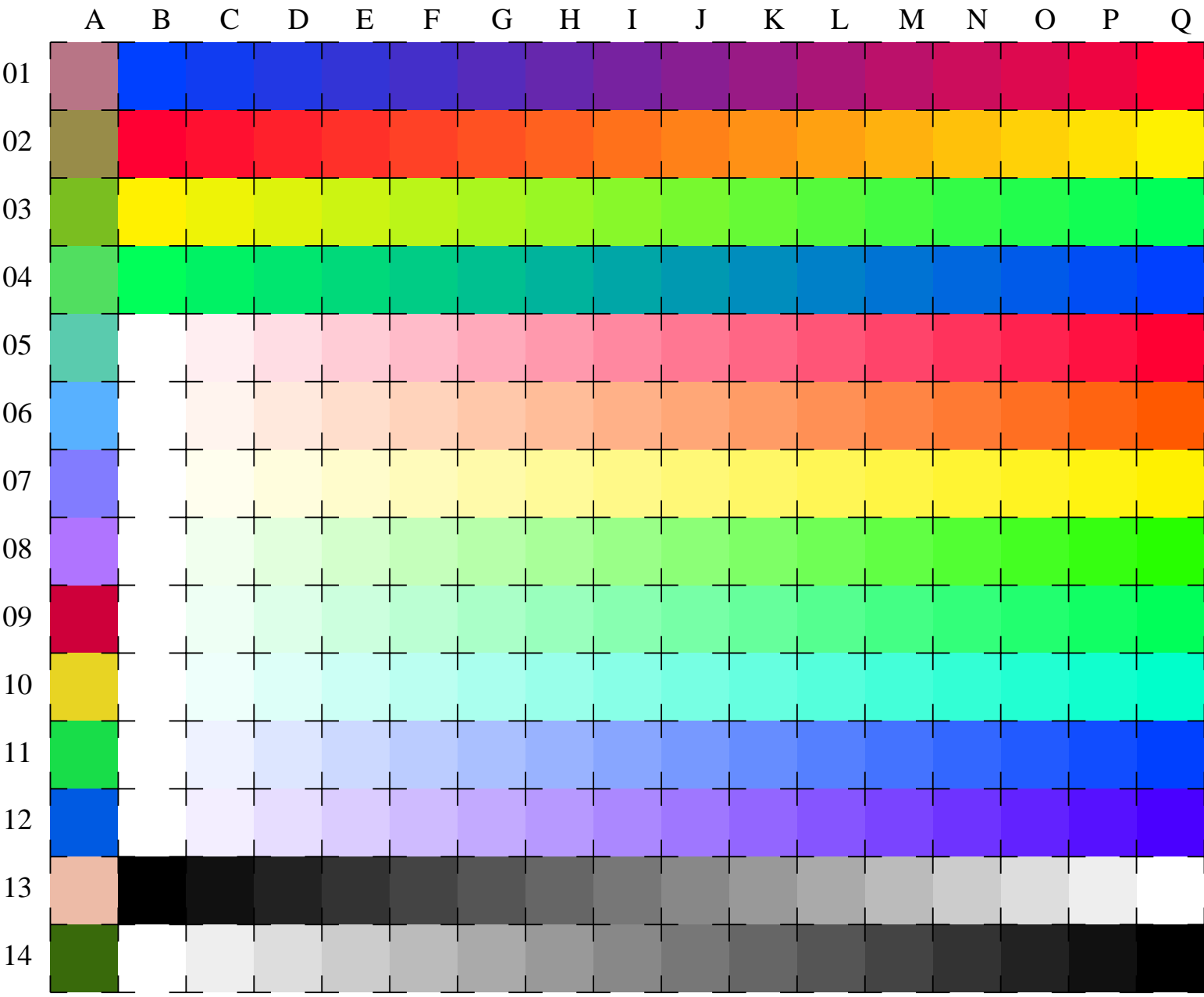


See for similar files: <http://www.ps.bam.de/LE95/>; [www.ps.bam.de/LE95/](http://www.ps.bam.de/LE95/)  
 Technical information: <http://www.ps.bam.de> Version 2.1, io=1,1

BAM registration: 20070901-LE95/10L/L95E00NA.PS/.TXT  
 application for measurement of printer or monitor systems

BAM material: code=rh4ta  
 /LE95 Form: 1/3, Serie: 1/1, Page: 1 Page count: 1



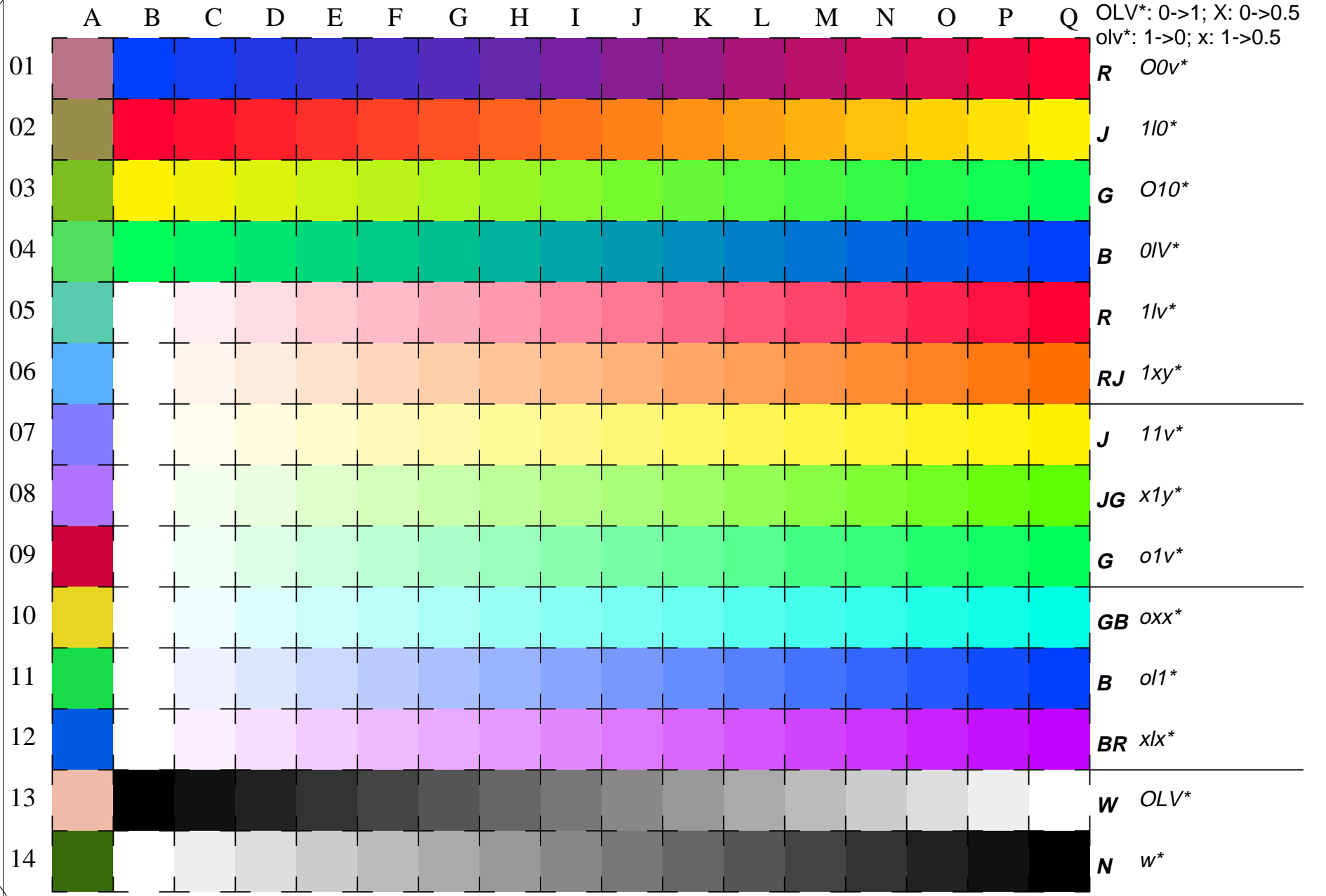
LE950-7, 16 equidistant CIELAB steps in *cmY0\*(ORS18)* for colour series B-R, R-J, J-G, G-B, W-R, W-RJ, W-J, W-JG, W-G, W-GB, W-B, W-BR, W-R, W-N, N-W and 14 CIE-test colours (left)

Test chart LE95: Elementary colours **RJGB** (professional) input: *olv\* setrgbcolor*  
 Hue circle and white – chromatic, CIE-test colours output: *no change compared to input*

See for similar files: <http://www.ps.bam.de/LE95/>; [www.ps.bam.de/LE95/](http://www.ps.bam.de/LE95/)  
 Technical information: <http://www.ps.bam.de> Version 2.1, io=1,1

BAM registration: 20070901-LE95/10L/L95E01NA.PS/.TXT  
 application for measurement of printer or monitor systems

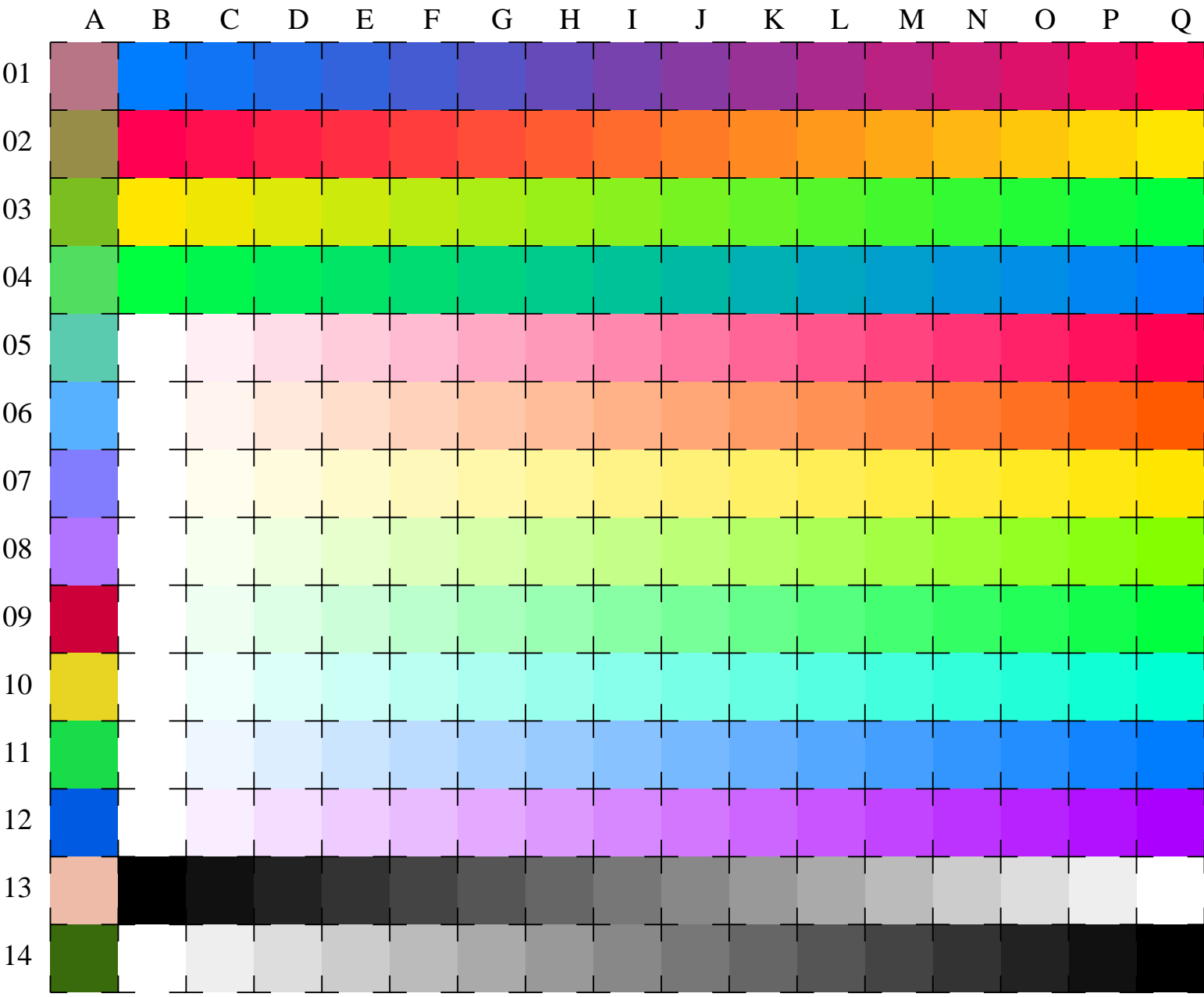
BAM material: code=rh4ta  
 /LE95 Form: 2/3, Serie: 1/1, Page: 2 Page count: 2



See for similar files: <http://www.ps.bam.de/LE95/>; [www.ps.bam.de/LE95/](http://www.ps.bam.de/LE95/)  
 Technical information: <http://www.ps.bam.de> Version 2.1, io=1,1

BAM registration: 20070901-LE95/10L/L95E02NA.PS/.TXT  
 application for measurement of printer or monitor systems

BAM material: code=rh4ta  
 /LE95 Form: 3/3, Serie: 1/1, Page: 3 Page count: 3



OLV\*: 0->1; X: 0->0.5  
 olv\*: 1->0; x: 1->0.5

01	<b>R</b>	<i>00v*</i>
02	<b>J</b>	<i>110*</i>
03	<b>G</b>	<i>010*</i>
04	<b>B</b>	<i>01v*</i>
05	<b>R</b>	<i>11v*</i>
06	<b>RJ</b>	<i>1xy*</i>
07	<b>J</b>	<i>11v*</i>
08	<b>JG</b>	<i>x1y*</i>
09	<b>G</b>	<i>01v*</i>
10	<b>GB</b>	<i>0xx*</i>
11	<b>B</b>	<i>011*</i>
12	<b>BR</b>	<i>x1x*</i>
13	<b>W</b>	<i>OLV*</i>
14	<b>N</b>	<i>w*</i>

LE950-7, 16 equidistant CIELAB steps in *cmY0\*(ORS18)* for colour series B-R, R-J, J-G, G-B, W-R, W-RJ, W-J, W-JG, W-G, W-GB, W-B, W-BR, W-R, W-N, N-W and 14 CIE-test colours (left)

Test chart LE95: Elementary colours **RJGB** (professional) input: *olv\* setrgbcolor*  
 Hue circle and white – chromatic, CIE-test colours output: *no change compared to input*