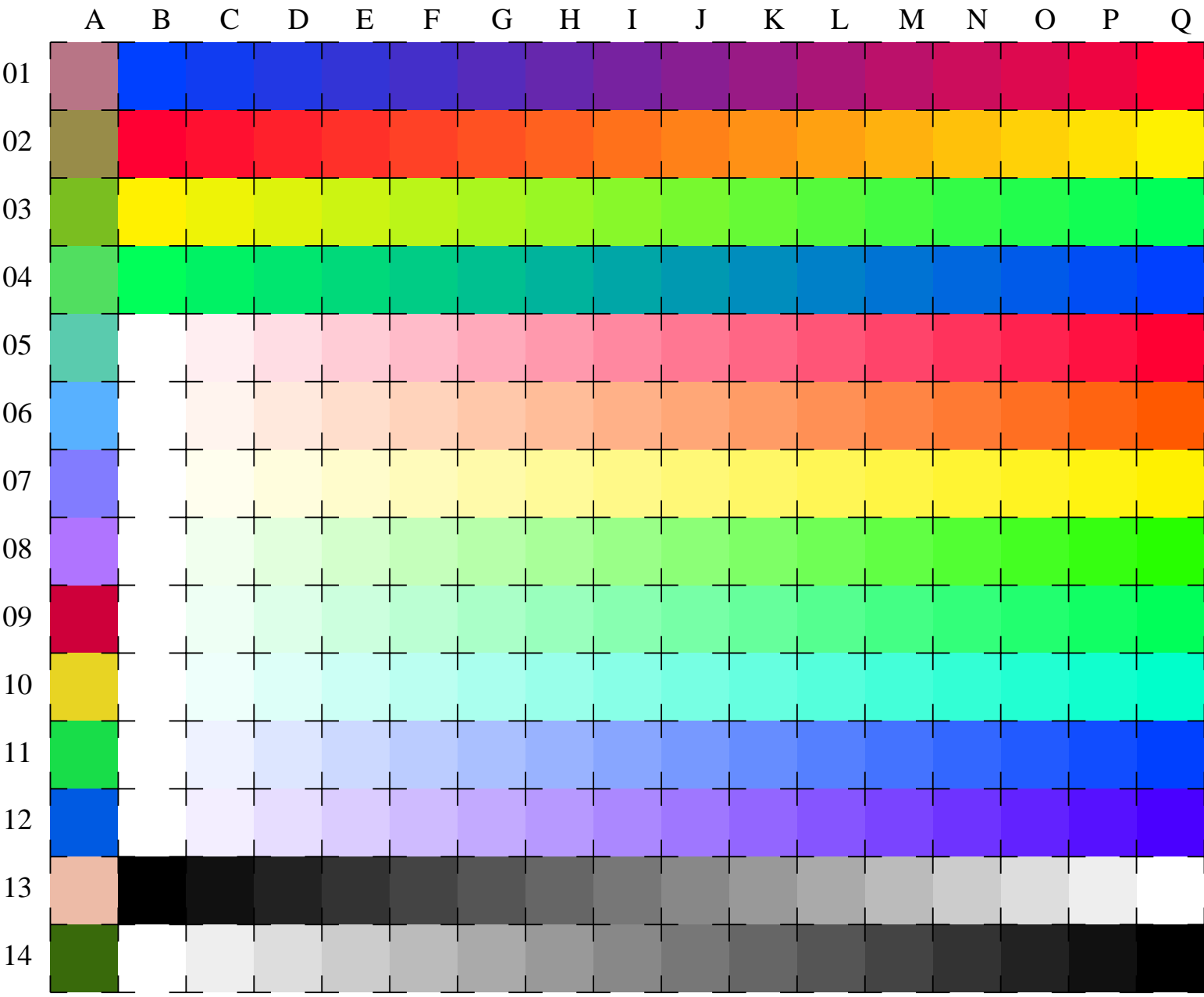


See for similar files: <http://www.ps.bam.de/LE95/>; www.ps.bam.de/LE95/
 Technical information: <http://www.ps.bam.de> Version 2.1, io=1,1

BAM registration: 20070901-LE95/10L/L95E00NP.PS/.PDF
 application for measurement of printer or monitor systems

BAM material: code=rh4ta
 /LE95 Form: 1/3, Serie: 1/1, Page: 1 Page count: 1



OLV*: 0->1; X: 0->0.5
 olv*: 1->0; x: 1->0.5

R 00v*
 J 110*
 G 010*
 B 01V*
 R 11v*
 RJ 1xy*
 J 11v*
 JG x1y*
 G 01v*
 GB 0xx*
 B 011*
 BR xlx*
 W OLV*
 N w*

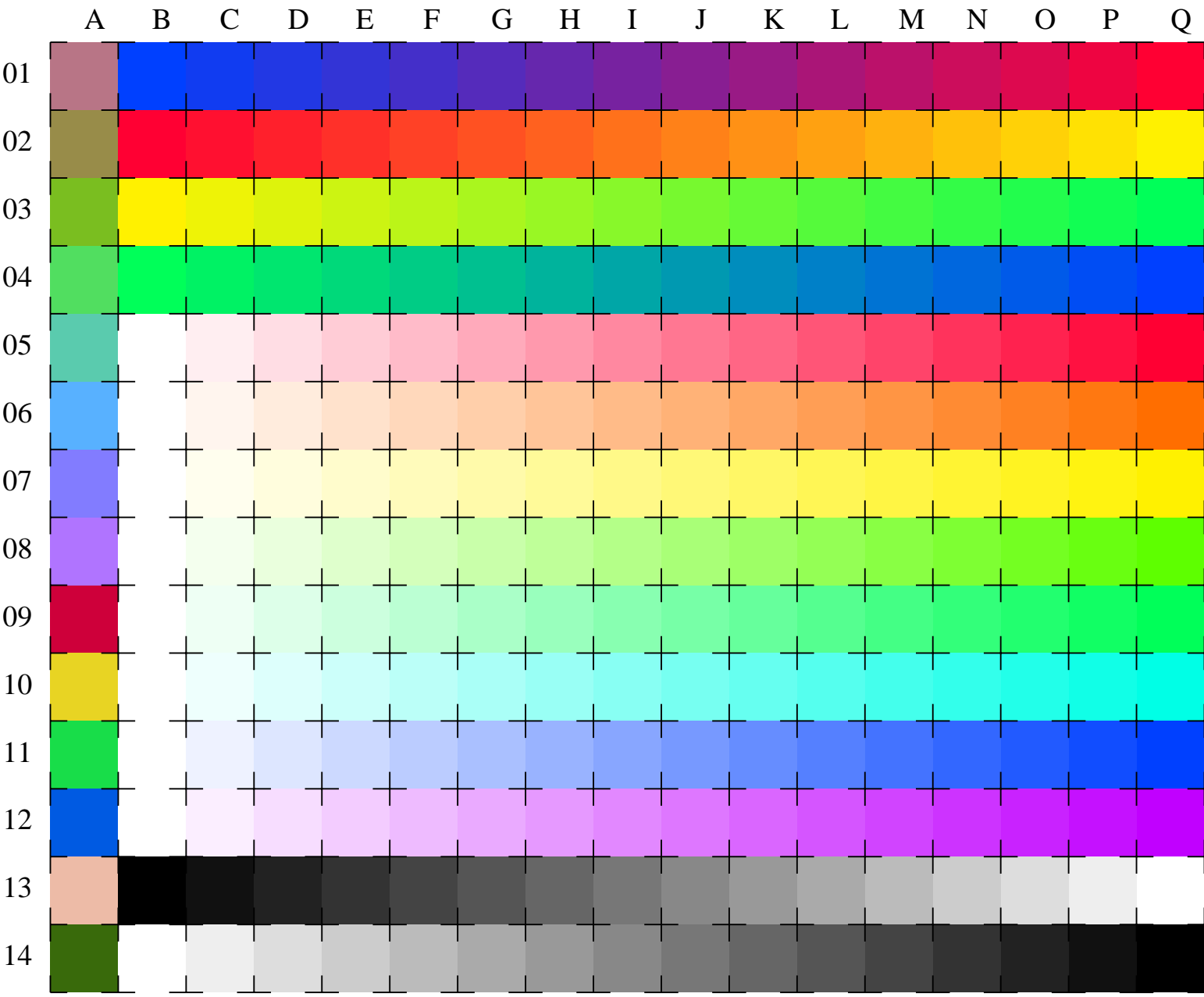
LE950-7, 16 equidistant CIELAB steps in *cmY0*(ORS18)* for colour series B-R, R-J, J-G, G-B, W-R, W-RJ, W-J, W-JG, W-G, W-GB, W-B, W-BR, W-R, W-N, N-W and 14 CIE-test colours (left)

Test chart LE95: Elementary colours RJGB (professional) input: olv* setrgbcolor
 Hue circle and white - chromatic, CIE-test colours output: no change compared to input

See for similar files: <http://www.ps.bam.de/LE95/>; www.ps.bam.de/LE95/
 Technical information: <http://www.ps.bam.de> Version 2.1, io=1,1

BAM registration: 20070901-LE95/10L/L95E01NP.PS/.PDF
 application for measurement of printer or monitor systems

BAM material: code=rh4ta
 /LE95 Form: 2/3, Serie: 1/1, Page: 2 Page count: 2

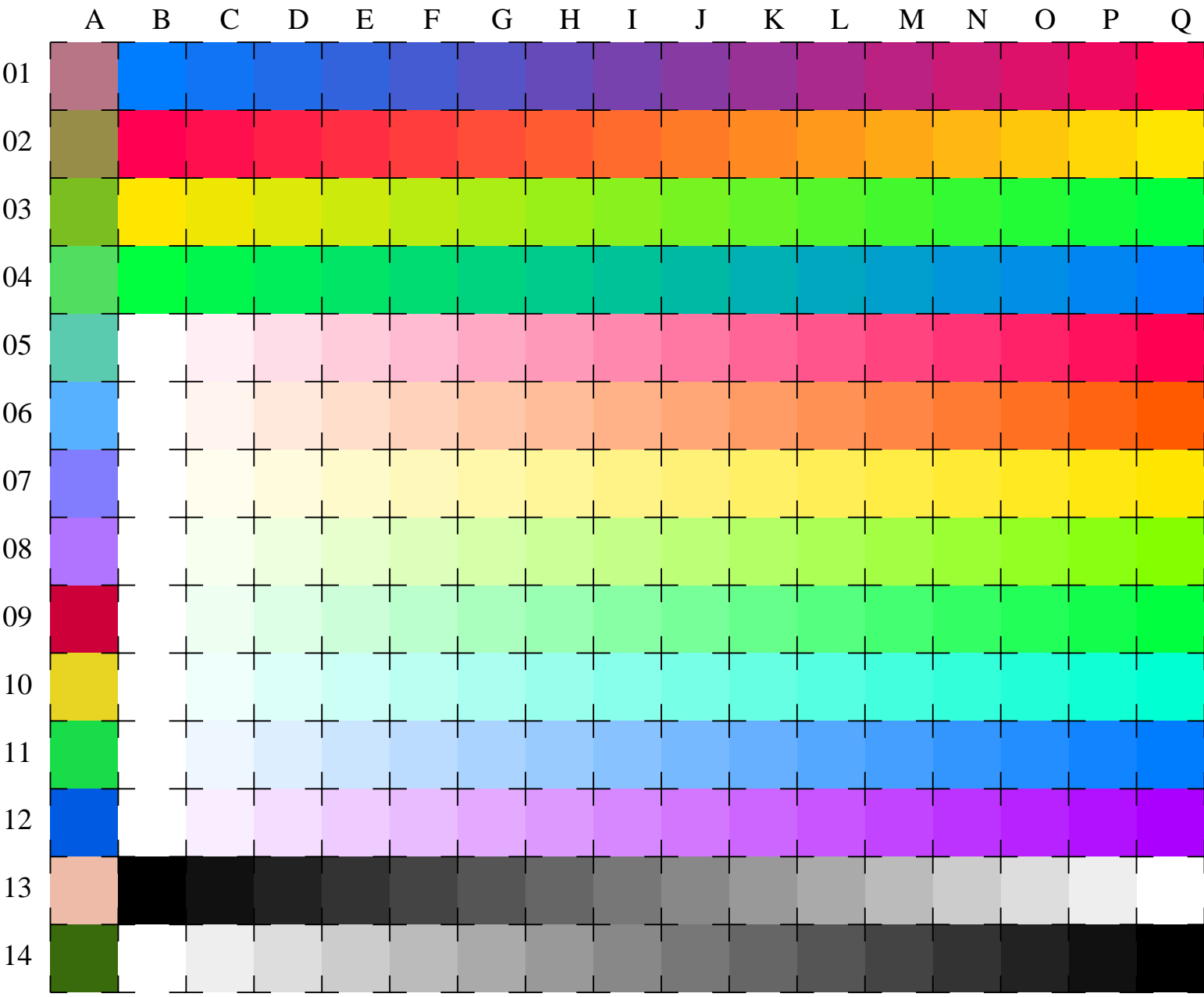


LE950-7, 16 equidistant CIELAB steps in $cmY0^*(ORS18)$ for colour series B-R, R-J, J-G, G-B, W-R, W-RJ, W-J, W-JG, W-G, W-GB, W-B, W-BR, W-R, W-N, N-W and 14 CIE-test colours (left)
 Test chart LE95: Elementary colours RJGB (professional) input: olv* setrgbcolor
 Hue circle and white - chromatic, CIE-test colours output: no change compared to input

See for similar files: <http://www.ps.bam.de/LE95/>; www.ps.bam.de/LE95/
 Technical information: <http://www.ps.bam.de> Version 2.1, io=1,1

BAM registration: 20070901-LE95/10L/L95E02NP.PS/.PDF
 application for measurement of printer or monitor systems

BAM material: code=rh4ta
 /LE95 Form: 3/3, Serie: 1/1, Page: 3 Page count: 3



OLV*: 0->1; X: 0->0.5
 olv*: 1->0; x: 1->0.5

LE950-7, 16 equidistant CIELAB steps in $cm\dot{y}0^*(ORS18)$ for colour series B-R, R-J, J-G, G-B, W-R, W-RJ, W-J, W-JG, W-G, W-GB, W-B, W-BR, W-R, W-N, N-W and 14 CIE-test colours (left)

Test chart LE95: Elementary colours **RJGB** (professional) input: *olv* setrgbcolor*
 Hue circle and white – chromatic, CIE-test colours output: *no change compared to input*

