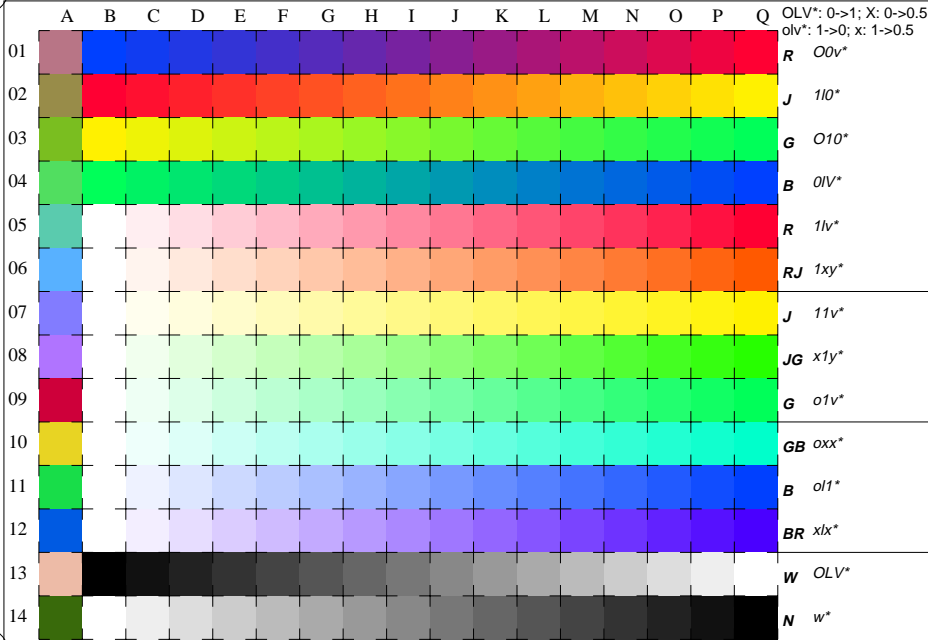


See for similar files: <http://www.ps.bam.de/LE95/>; www.ps.bam.de/LEHHM
 Technical information: <http://www.ps.bam.de> Version 2.1, io=1,1



BAM registration: 20070901-LE95/L95E00N1.PS/.TXT
 application for measurement of printer or monitor systems

BAM material: code=hh44
 LE95: Form 1A, Serie 11A, Page 1 Page count: 1

LE950-7, 16 equidistant CIELAB steps in *cmy0*(ORS18)* for colour series *B-R, R-J, J-G, G-B, W-R, W-RJ, W-J, W-JG, W-G, W-GB, W-B, W-BR, W-R, W-N, N-W* and 14 CIE-test colours (left)

Test chart LE95: Elementary colours *RJGB* (professionel)

input: *olv* setrgbcolor*

output: no change compared to input

Hue circle and white – chromatic, CIE-test colours

