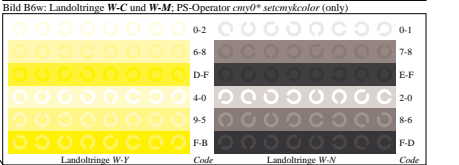
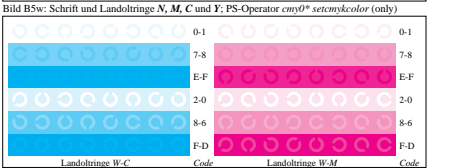
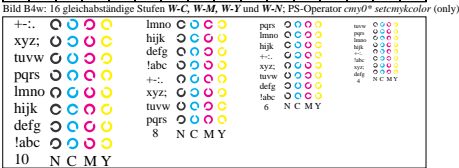
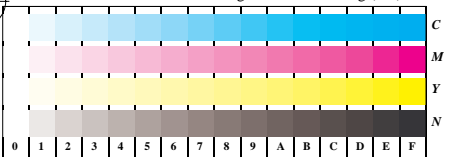
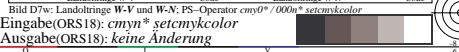
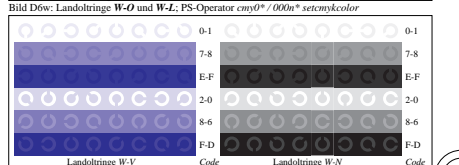
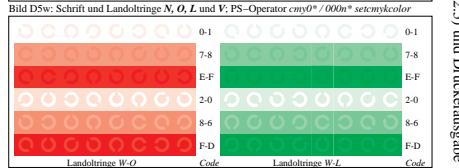
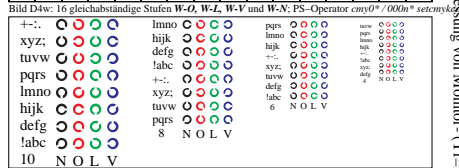
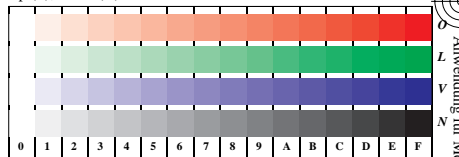


Siehe ähnliche Dateien: <http://www.ps.bam.de/LG20/LG20.HTM>
 Information, Bestellung: <http://www.ps.bam.de> Version 2.0, io=0.0



Prüfvorlage LG20: CIELAB–Stufen ISO/IEC 15775
 Bunt–Weiß, Bunt–Schwarz, Schwarz–Weiß



Eingabe(ORS18): *cmYn* setcmykcolor*
 Ausgabe(ORS18): keine Änderung

BAM-Registrierung: 2003/101-LG20/L20G00N2.PS/.TXT
 Anwendung für Messung von Monitor- (Y=2.5) und Druckeransatz abe
 BAM-Material: Code=hadta