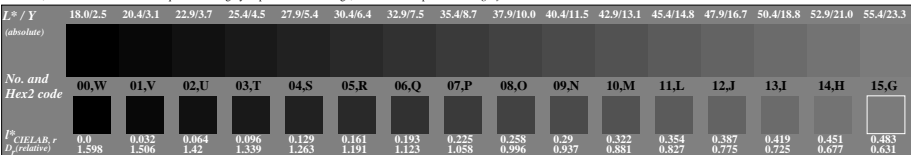
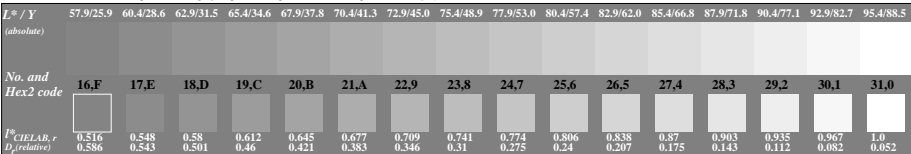


ME04-3, Picture 1: 5 times 5 visual equidistant L^* -grey steps and Landolt-rings; Use of the PS operator w^* setgray



ME04-5, Picture 2: 32 visual equidistant L^* -grey steps, dark steps; Use of the PS operator w^* setgray



ME04-7, Picture 3: 32 visual equidistant L^* -grey steps, light steps; Use of the PS operator w^* setgray

BAM-ME04: Modification of achromatic CEN CSH 99012-test chart no. 3
 Test chart for visual linearization of 5/32 step grey series, Landolt-rings

input: w^* setgray
 output: w^* setgray