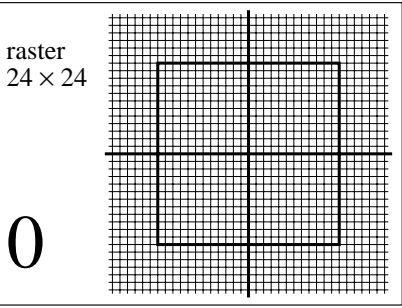
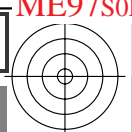
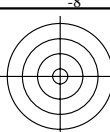


http://farbe.li.tu-berlin.de/ME97/ME97L0FA.TXT /.PS; start output
F: 3D-linearization ME97/ME97LE30FA.DAT in file (F), page 1/1

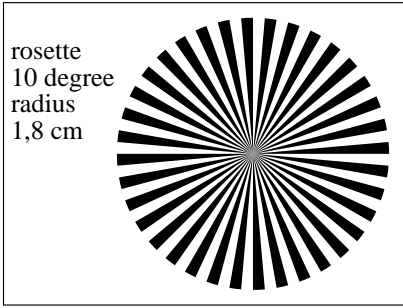
see similar files: <http://farbe.li.tu-berlin.de/ME97/ME97.HTM>
<http://130.149.60.45/~farbmetrik> or <http://farbe.li.tu-berlin.de>

TUB registration: 20160501-ME97/ME97L0FA.TXT /.PS
application for measurement of display output

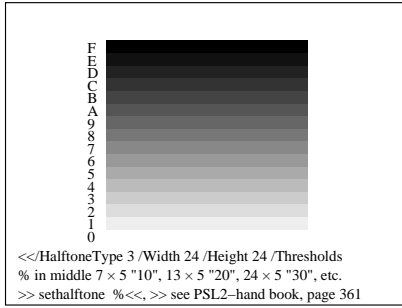
TUB material: code=rh4ta



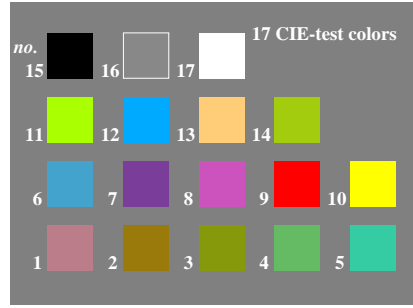
1-103000-L0 ME970-1N, BTe01



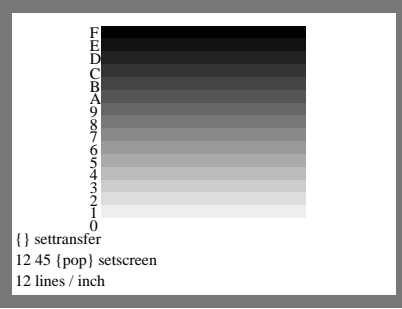
1-103000-L0 ME970-2N, BTe02



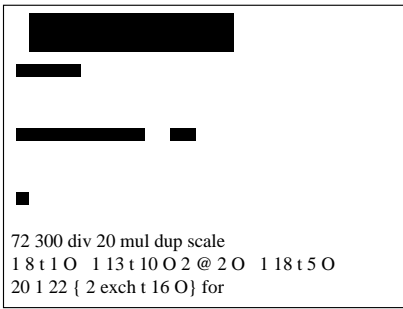
1-103000-L0 ME971-1N, BTe07



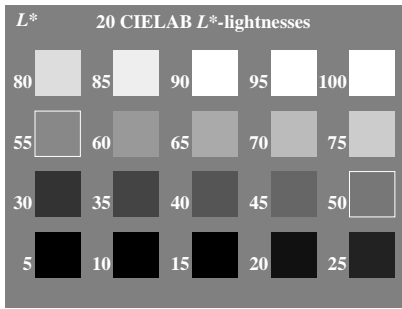
1-103000-L0 ME971-2N, BTe08



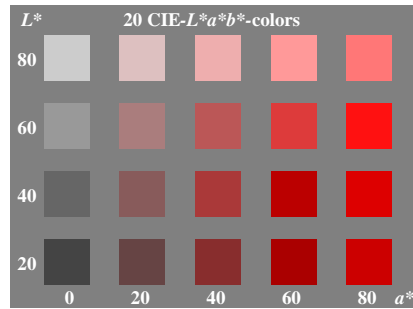
1-103000-L0 ME970-3N, BTe03



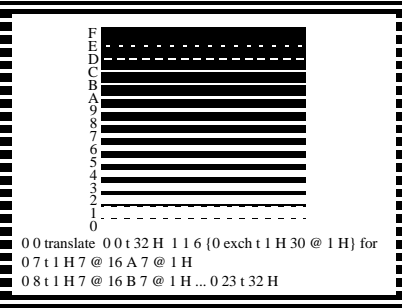
1-103000-L0 ME970-4N, BTe04



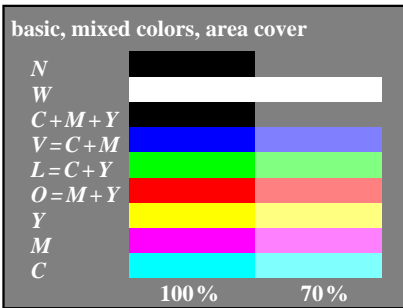
1-103000-L0 ME971-2N, BTe09



1-103000-L0 ME971-4N, BTe10



1-103000-L0 ME970-5N, BTe05



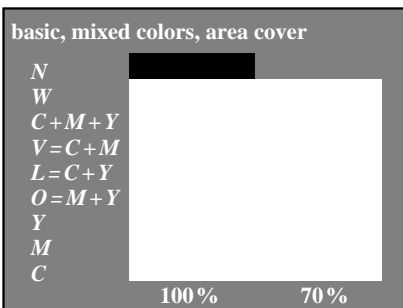
1-103000-L0 ME970-6N, BTe06_1



1-103000-L0 ME971-5N, BTe11



1-103000-L0 ME971-6N, BTe12



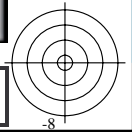
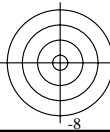
1-103000-L0 ME970-8N, BTe06_3



1-103000-L0 ME971-7N, BTe13



1-103000-L0 ME971-1N, BTe14



TUB-test chart ME97; Computer graphics and colorimetry
Image series ME97, 3D=1, de=0

input: rgb/cmyk -> rgb/cmyk
output: no change