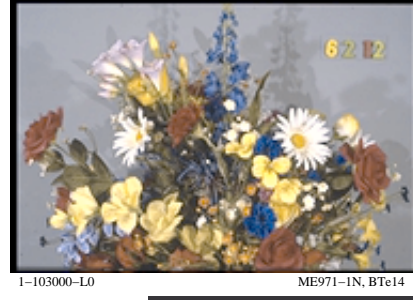
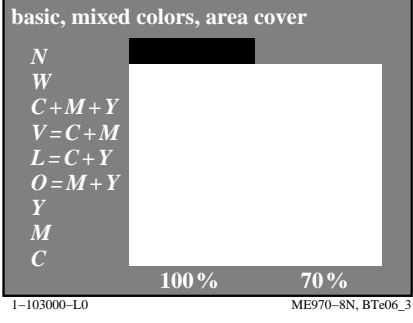
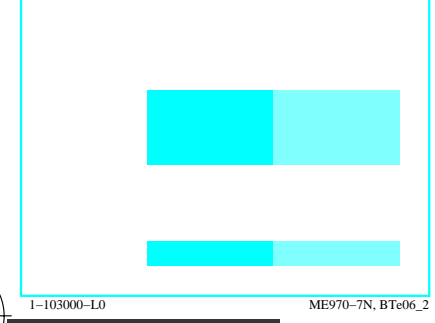
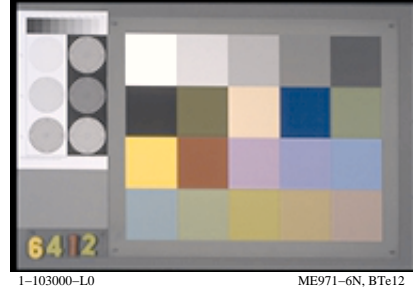
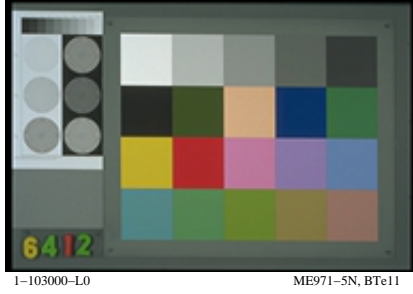
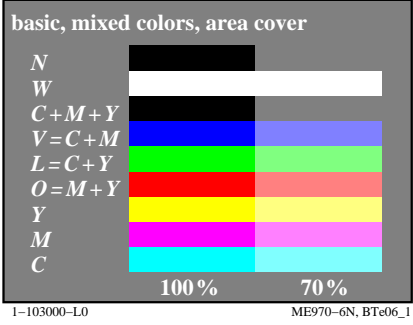
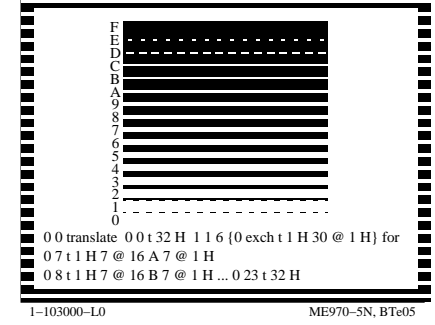
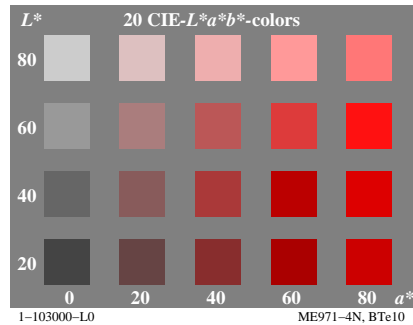
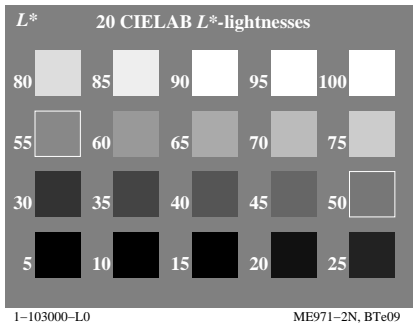
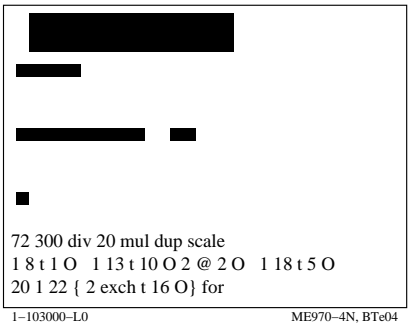
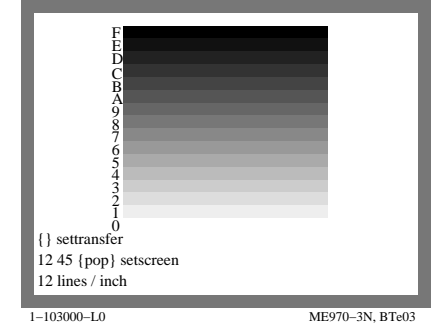
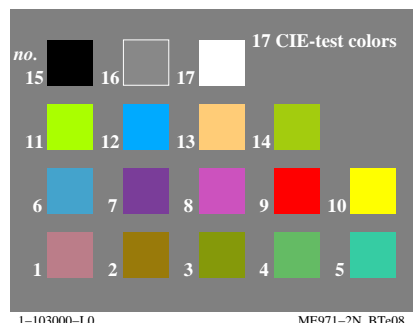
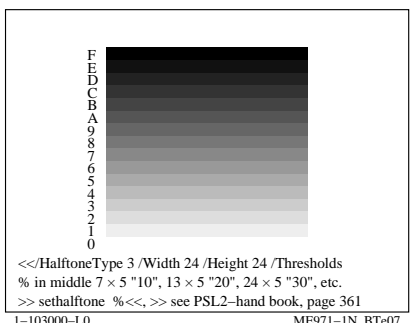
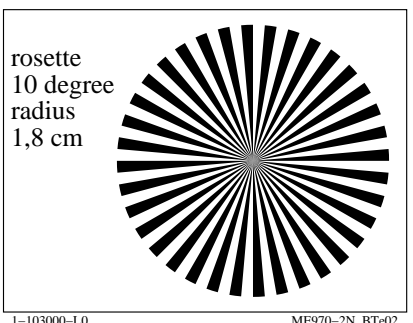
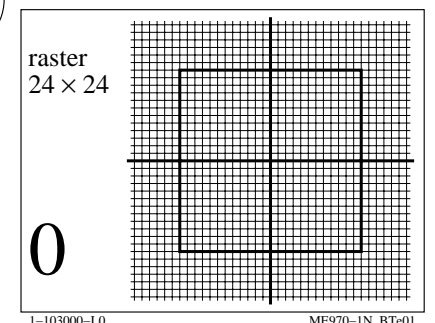
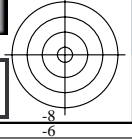
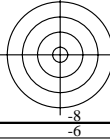
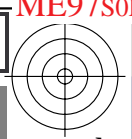
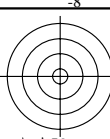


http://farbe.li.tu-berlin.de/ME97/ME97L0FP.PDF /.PS; start output  
F: 3D-linearization ME97/ME97LE30FP.DAT in file (F), page 1/1

see similar files: <http://farbe.li.tu-berlin.de/ME97/ME97.HTM>  
<http://130.149.60.45/~farbmetrik> or <http://farbe.li.tu-berlin.de>

TUB registration: 20160501-ME97/ME97L0FP.PDF /.PS  
application for measurement of display output

TUB material: code=rh4ta



TUB-test chart ME97; Computer graphics and colorimetry  
Image series ME97, 3D=1, de=0

input: rgb/cmyk -> rgb/cmyk  
output: no change