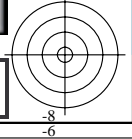
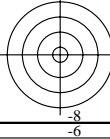
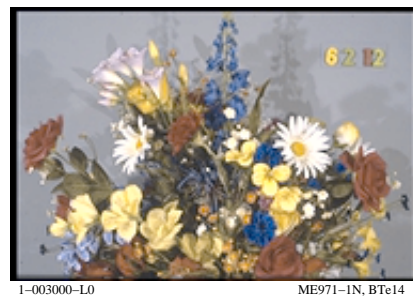
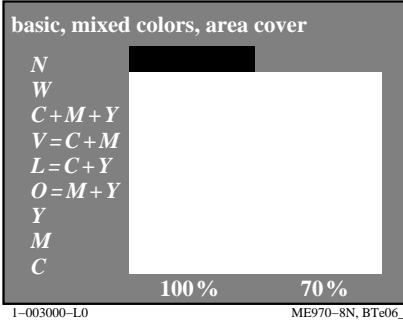
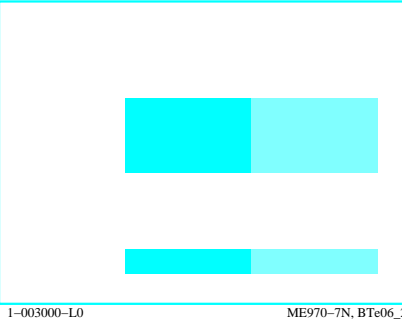
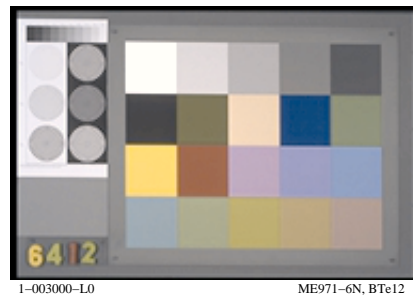
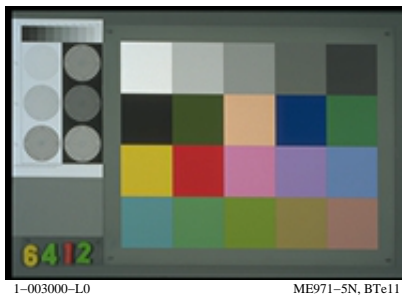
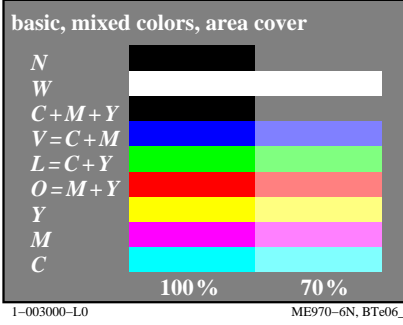
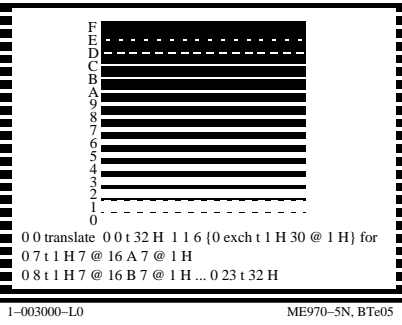
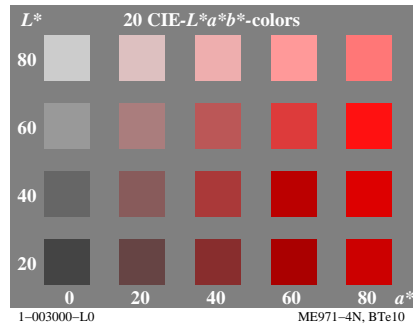
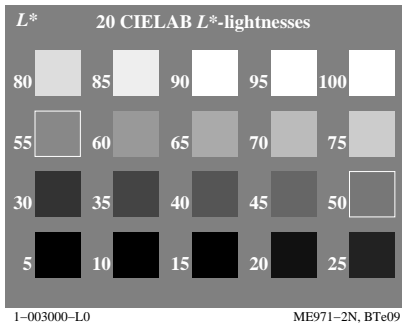
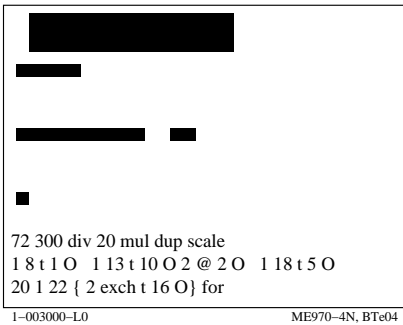
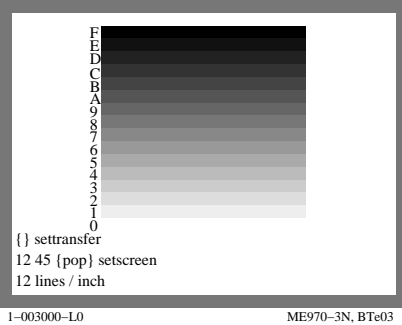
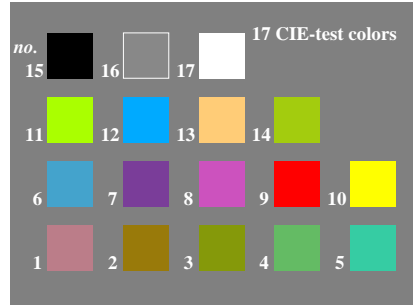
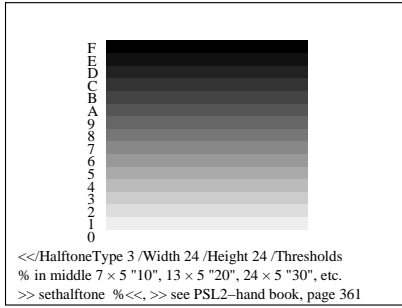
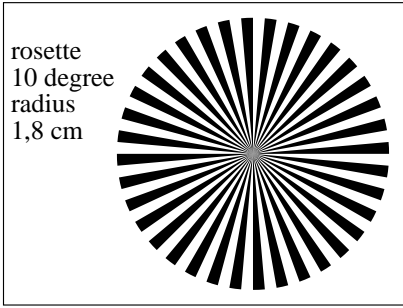
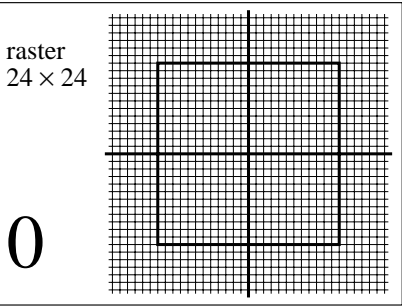
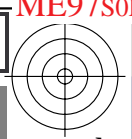
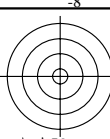


http://farbe.li.tu-berlin.de/ME97/ME97L0NA.TXT /.PS; start output
N: no 3D-linearization (OL) in file (F) or PS-startup (S), page 1/1

see similar files: <http://farbe.li.tu-berlin.de/ME97/ME97.HTM>
<http://130.149.60.45/~farbmetrik> or <http://farbe.li.tu-berlin.de>

TUB registration: 20160501-ME97/ME97L0NA.TXT /.PS
application for measurement of display output

TUB material: code=rh4ta



TUB-test chart ME97; Computer graphics and colorimetry
Image series ME97, 3D=0, de=0

input: rgb/cmyk -> rgb/cmyk
output: no change