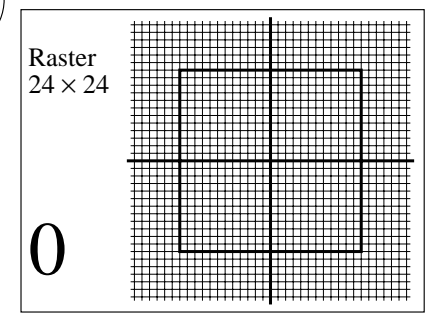
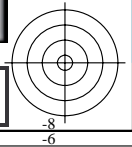
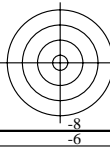
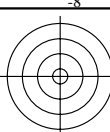


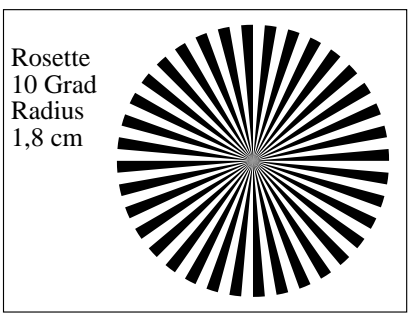
Siehe ähnliche Dateien: <http://farbe.li.tu-berlin.de/MG97/MG97.HTM>  
<http://130.149.60.45/~farbmetrik> oder <http://farbe.li.tu-berlin.de>

TUB-Registrierung: 20160501-MG97/MG97L0N0.TXT /.PS  
Anwendung für Messung von Display-Ausgabe

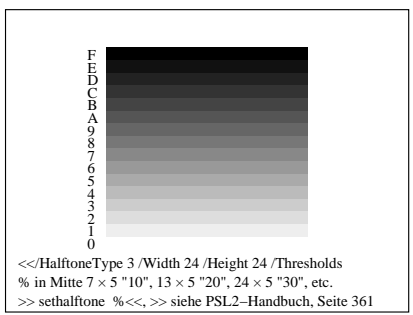
TUB-Material: Code=rh4ta



0-003000-L0 MG970-1N, BTe01

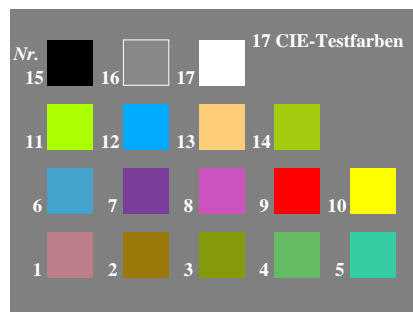


0-003000-L0 MG970-2N, BTe02

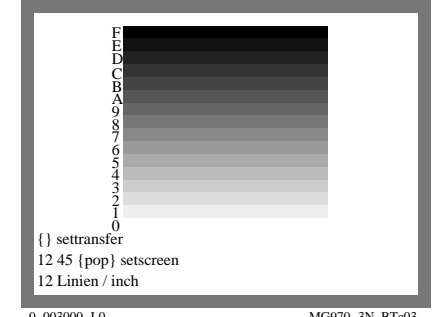


<</HalftoneType 3 /Width 24 /Height 24 /Thresholds  
% in Mitte 7 x 5 "10", 13 x 5 "20", 24 x 5 "30", etc.  
>> sehalftone %<<, >> siehe PSL2-Handbuch, Seite 361

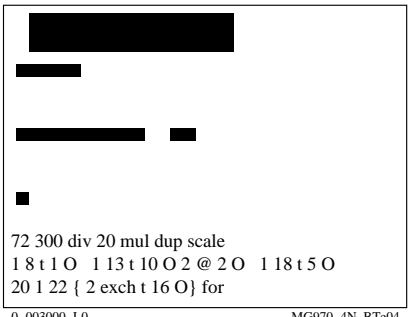
0-003000-L0 MG971-1N, BTe07



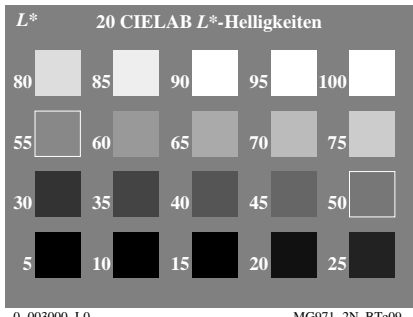
0-003000-L0 MG971-2N, BTe08



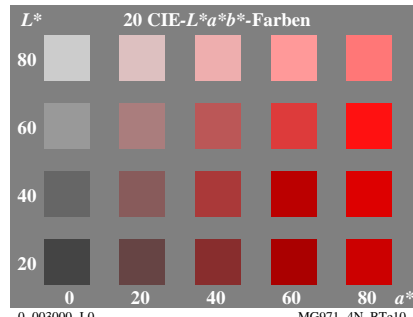
0-003000-L0 MG970-3N, BTe03



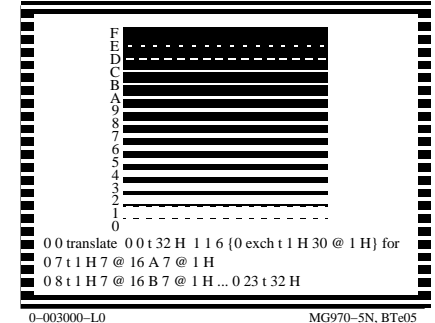
0-003000-L0 MG970-4N, BTe04



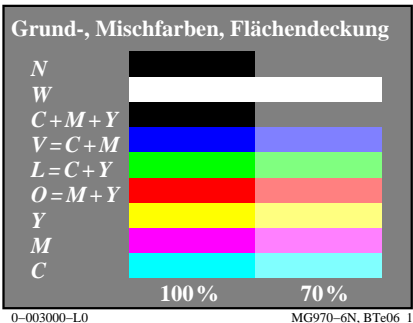
0-003000-L0 MG971-2N, BTe09



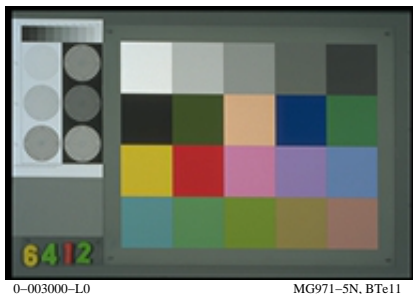
0-003000-L0 MG971-4N, BTe10



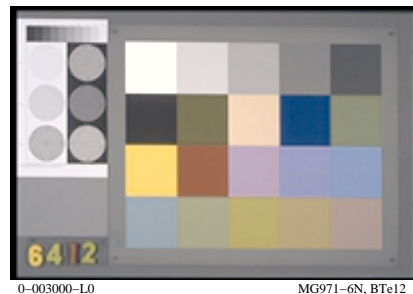
0-003000-L0 MG970-5N, BTe05



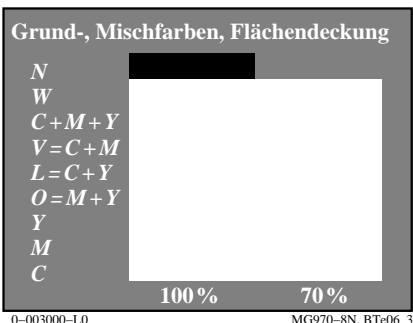
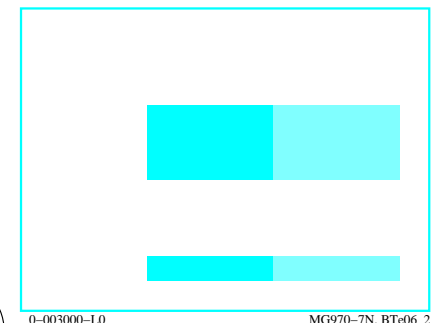
0-003000-L0 MG970-6N, BTe06\_1



0-003000-L0 MG971-5N, BTe11



0-003000-L0 MG971-6N, BTe12



0-003000-L0 MG970-8N, BTe06\_3



0-003000-L0 MG971-7N, BTe13



0-003000-L0 MG971-1N, BTe14

