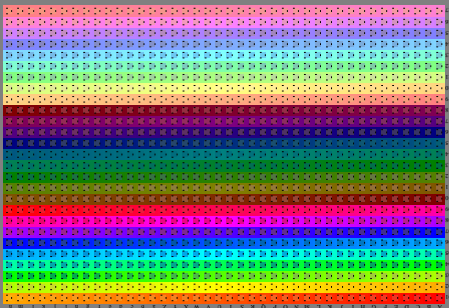
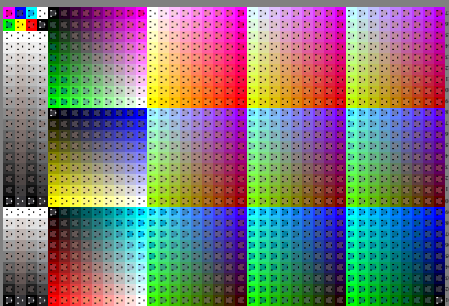
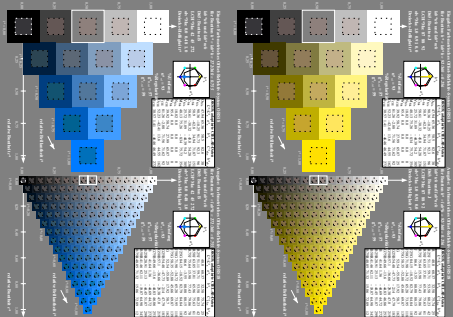
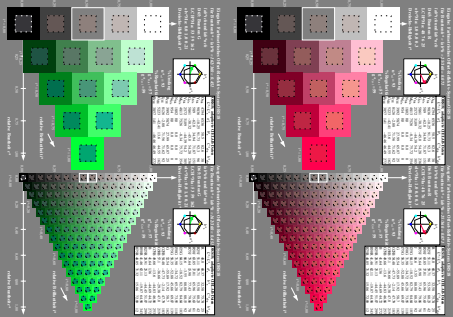


Siehe ähnliche Dateien: <http://www.ps.bam.de/XG27/>; www.ps.bam.de/XG.HTM
Technische Information: <http://www.ps.bam.de> Version 2.1, 10-1.1



XG270-TN, 6 Gerätschritte (links), 4 Elementarfarbstoffe (rechts) und Standardfarben: cmyk9*, Seite: 1

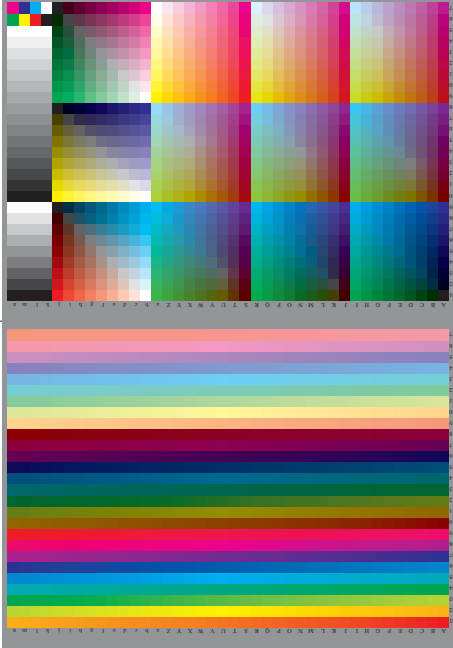
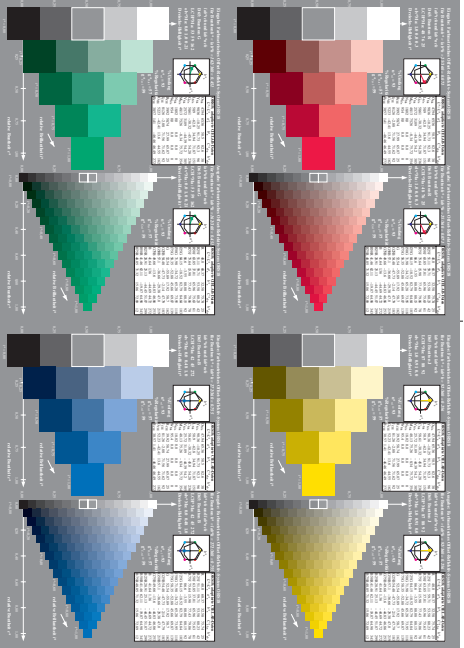
BAM-Prüfvorlage XG27; Farbmatrik-Systeme, Seite 1/9
5 und 16stufige Elementarfarbreihen; Standardfarben



Eingabe: 000n / w / nmm / www set...
Ausgabe: keine Eingabeänderung

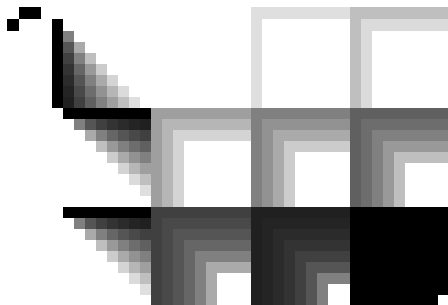
BAM-Registrierung: 20080101-XG27/L27G00N1.PS/TXT
Anwendung für Beurteilung und Messung von Drucker- oder Monitorsystemen

BAM-Material: Code=thadta



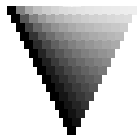
Siehe ähnliche Dateien: <http://www.ps.bam.de/XG27/>; www.ps.bam.de/XG.HTM
 Technische Information: <http://www.ps.bam.de> Version 2.1, 10-1.1

XG270-TN; 6 Gerätschritte (links), 4 Elementarfarbtöne (rechts) und Standardfarbdaten: cmyk4*, Seite: 2



27

27



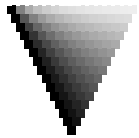
27

27



27

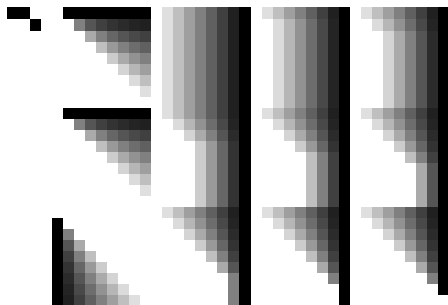
27



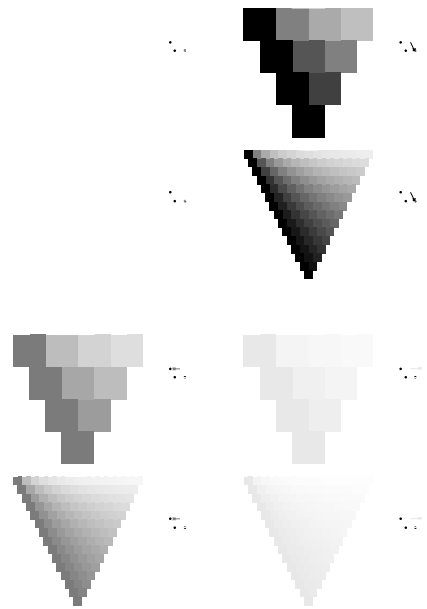
27

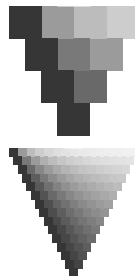
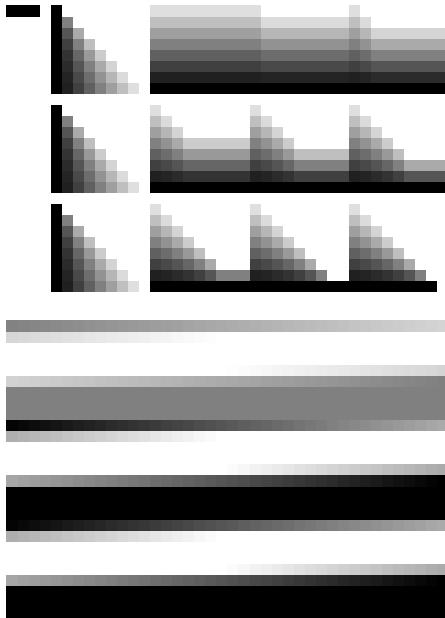
27

c



m





y



\hat{z}

\hat{z}

\hat{z}

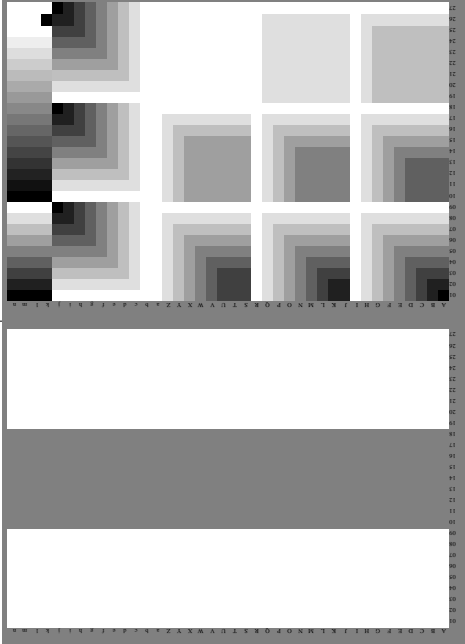
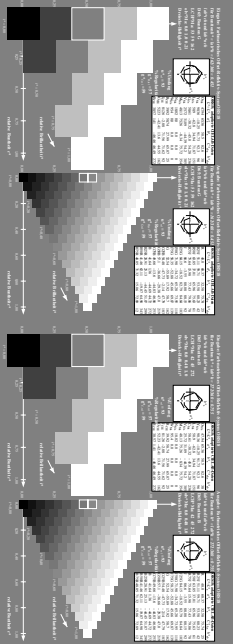
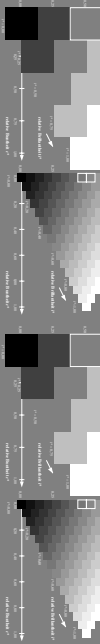
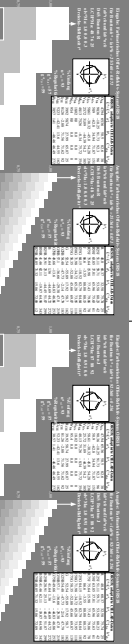
\hat{z}

\hat{z}

\hat{z}

\hat{z}

\hat{z}



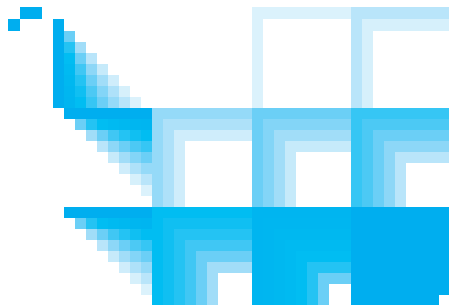
Siehe ähnliche Dateien: <http://www.ps.bam.de/XG27/>; [www.ps.bam.de/Version 2.1, 10-1.1](http://www.ps.bam.de/Version%202.1,10-1.1)

XG270-1N; 6 Gerätschritte (links), 4 Elementarfarbtöne (rechts) und Standardfarbarten: cmyk4*, Seite: 6; Separation: N

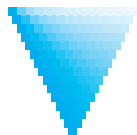
BAM-Prüfvorlage XG27; Farbmetrik-Systeme, Seite 6/9
 5 und 16stufige Elementarfarbreihen; Standardfarben,

Eingabe: 000n / w / nnn0 / www set...
 Ausgabe: -> cmyk5* setcmykcolor





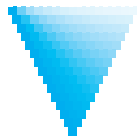
27



28



29



30

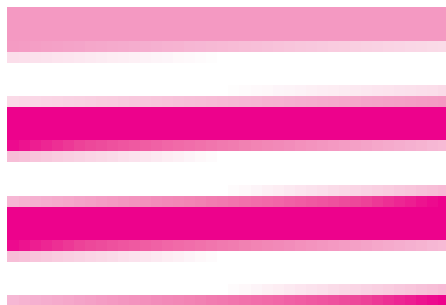
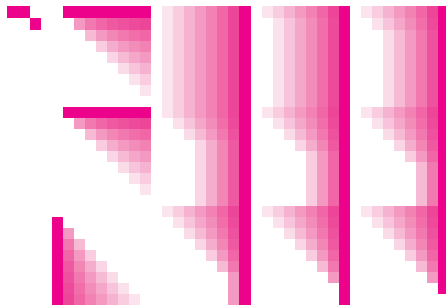
27

28

29

30

c



X0270-7N; 6 Gerätebauart (links), 4 Elementbauart (rechts) und Standardfarbdaten: cmyk⁴, Seite: 8; Separation: M

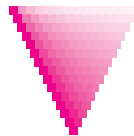
m

0.1



0.2

0.3



0.4

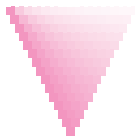
0.5



0.6

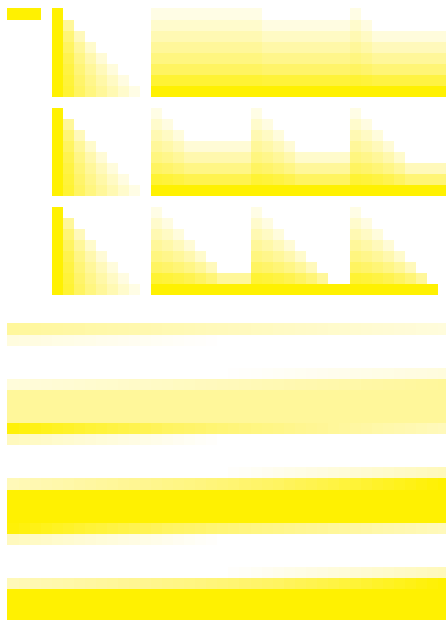


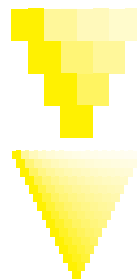
0.7



0.8




 \hat{c}
 \hat{c}
 \hat{c}
 \hat{c}

 \hat{c}
 \hat{c}
 \hat{c}
 \hat{c}

 \hat{c}
 \hat{c}