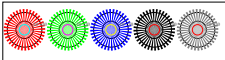




AED90-1: Pattern D37646: 18 sequential steps: R, G, B, N: P3 operator: rgh/epsh/epsh/uvp/uvp/uvp

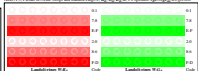


AED90-1: Pattern D37646: Lines and Lambert: step: R, G, B, N: P3 operator: rgh/epsh/epsh/uvp/uvp/uvp

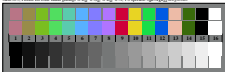


radial gratings: R, G, B, N: Z

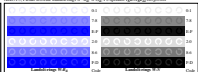
AED90-1: Pattern D37646: radial gratings: R, G, B, N: P3 operator: rgh/epsh/epsh/uvp/uvp/uvp



AED90-1: Pattern D37646: Lambert: step: R, G, B, N: P3 operator: rgh/epsh/epsh/uvp/uvp/uvp



AED90-1: Pattern D37646: 16 CIE test colours and 2 * 16 grey: step: (a), rgh/epsh/epsh/uvp/uvp/uvp



AED90-1: Pattern D37646: Lambert: step: R, G, B, N: P3 operator: rgh/epsh/epsh/uvp/uvp/uvp