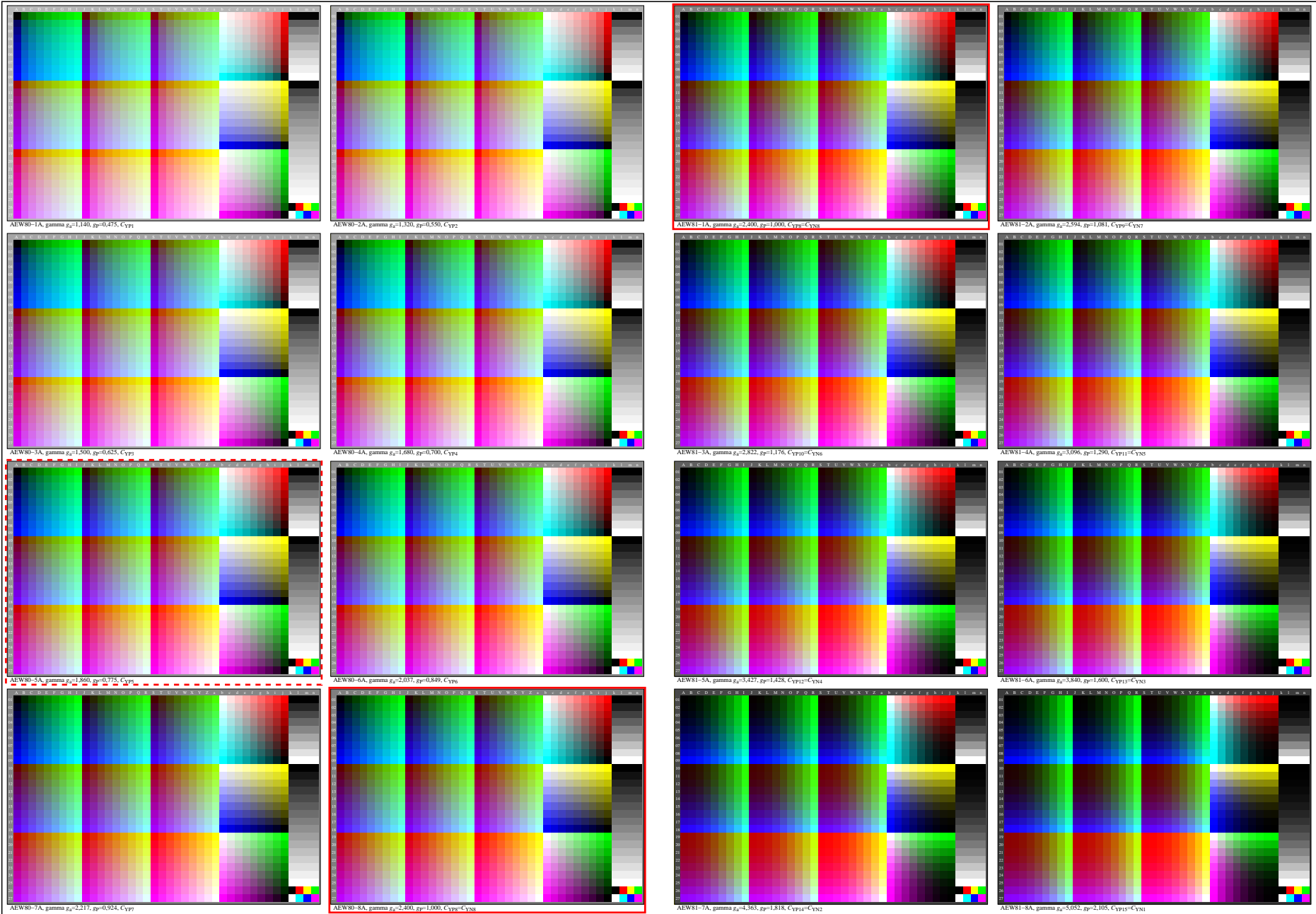


http://farbe.li.tu-berlin.de/AEW8/AEW8LONA.TXT /.PS; only vector graphic VG; start output N: no 3D-linearization (OL) in file (F) or PS-startup (S), page 1/1, image format A4L

see similar files: <http://farbe.li.tu-berlin.de/AEW8/AEW8.HTM>  
 technical information: <http://farbe.li.tu-berlin.de> or <http://130.149.60.45/~farbmetrik>

TUB registration: 20200701-AEW8/AEW8LONA.TXT /.PS TUB material: code=rh4ta  
 application for evaluation and measurement of display or print output



TUB-test chart AEW8; Test of optimal colour-step recognition input: w/rgb/cmyk->rgb (1MR)  
 16 times 1080 VG-standard colours, similar ISO 9241-306:AE49 output: gamma gp=0,475 bis 2,105