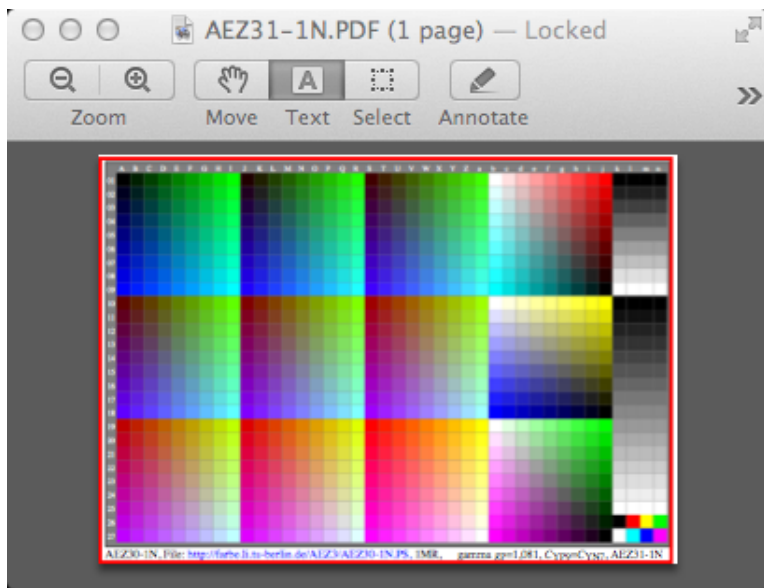
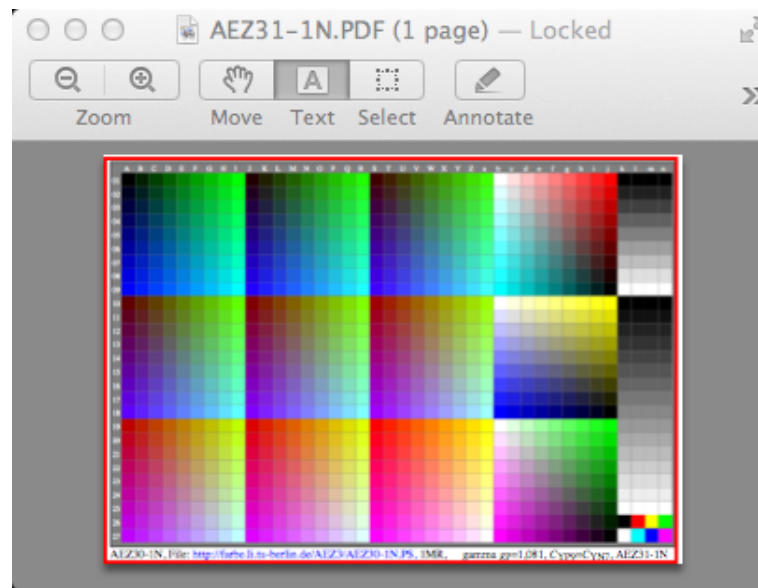


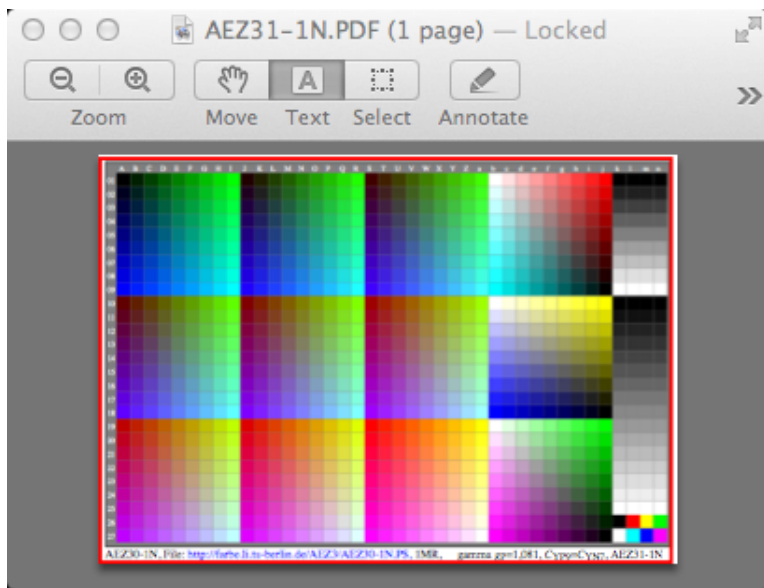
see similar files: <http://farbe.li.tu-berlin.de/AEX1/AEX1.HTM>
technical information: <http://farbe.li.tu-berlin.de> or <http://130.149.60.45/~farbmetrik>



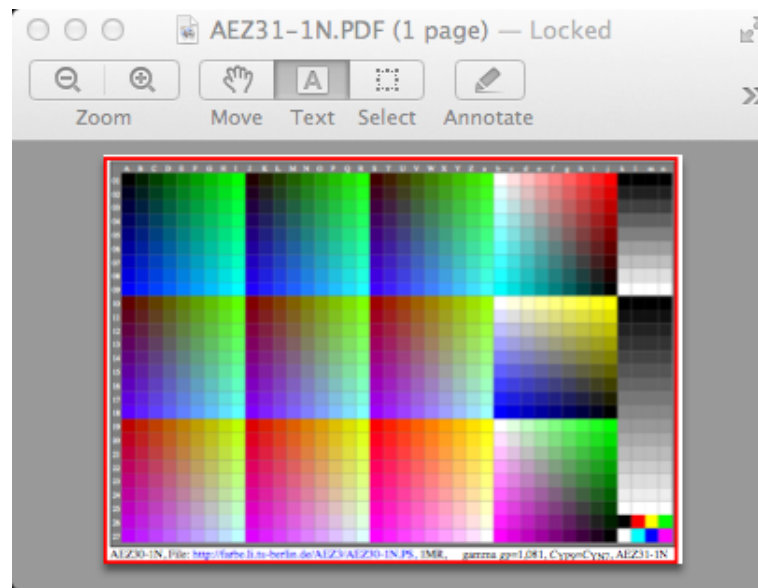
AEX10-3N



AEX11-3N



AEX10-7N



AEX11-7N

TUB registration: 20200601-AEX1/AEX1L0NP.PDF /.PS
application for evaluation and measurement of display or print output

TUB material: code=rh4ta