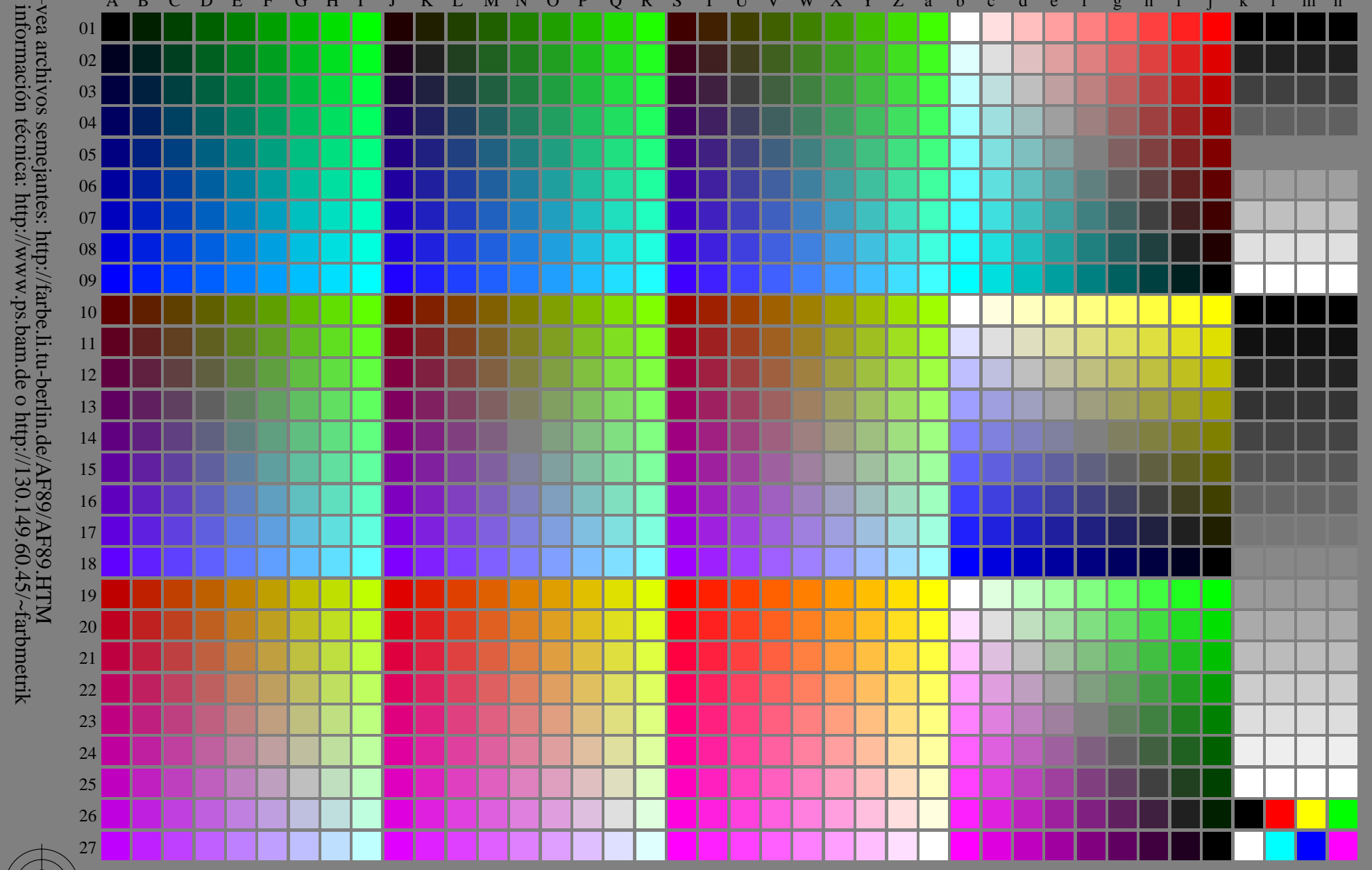


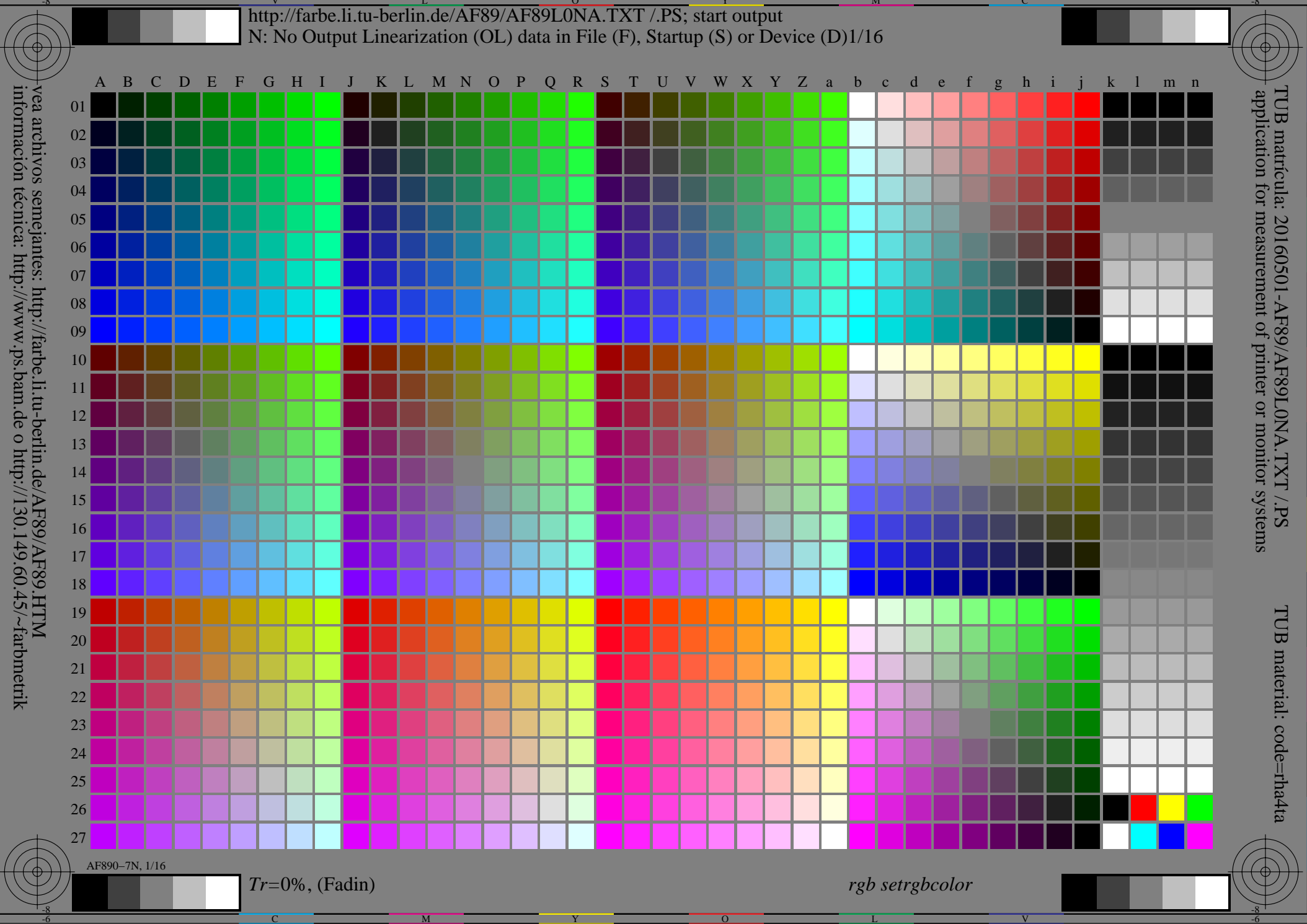
<http://farbe.li.tu-berlin.de/AF89/AF89L0NA.TXT> /.PS; start output  
N: No Output Linearization (OL) data in File (F), Startup (S) or Device (D)1/16



AF890-7N, 1/16

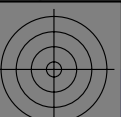
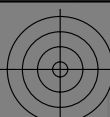
Tr=0%, (Fadin)

rgb setrgbcolor





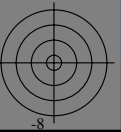
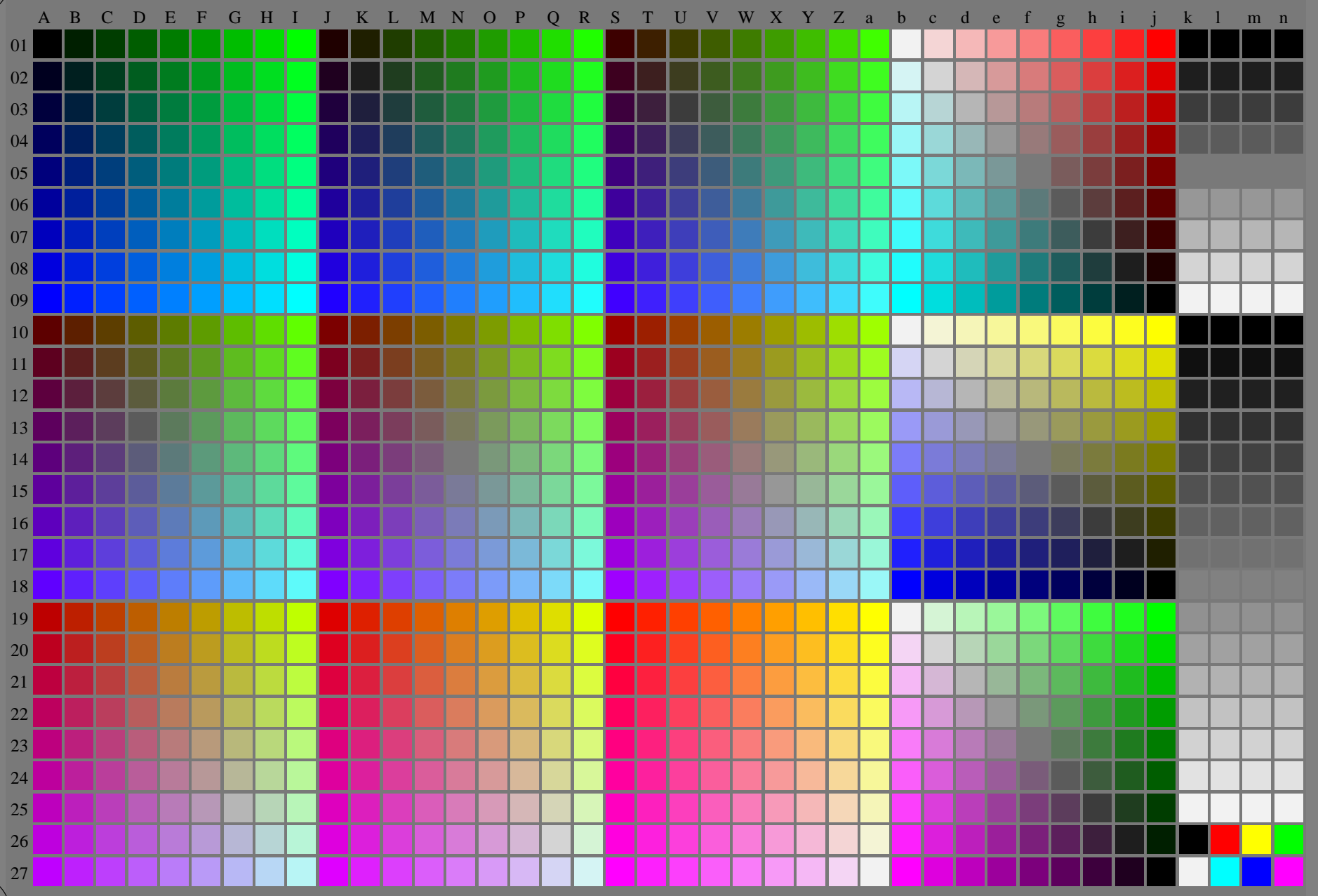
<http://farbe.li.tu-berlin.de/AF89/AF89L0NA.TXT> /.PS; start output  
N: No Output Linearization (OL) data in File (F), Startup (S) or Device (D)3/16



vea archivos semejantes: <http://farbe.li.tu-berlin.de/AF89/AF89.HTM>  
información técnica: <http://www.ps.bam.de> o <http://130.149.60.45/~farbmatrik>

TUB matrícula: 20160501-AF89/AF89L0NA.TXT /.PS  
application for measurement of printer or monitor systems

TUB material: code=rha4ta



AF890-7N, 3/16

Tr=2,5%, (Fadin)

rgb setrgbcolor

C M Y O L V

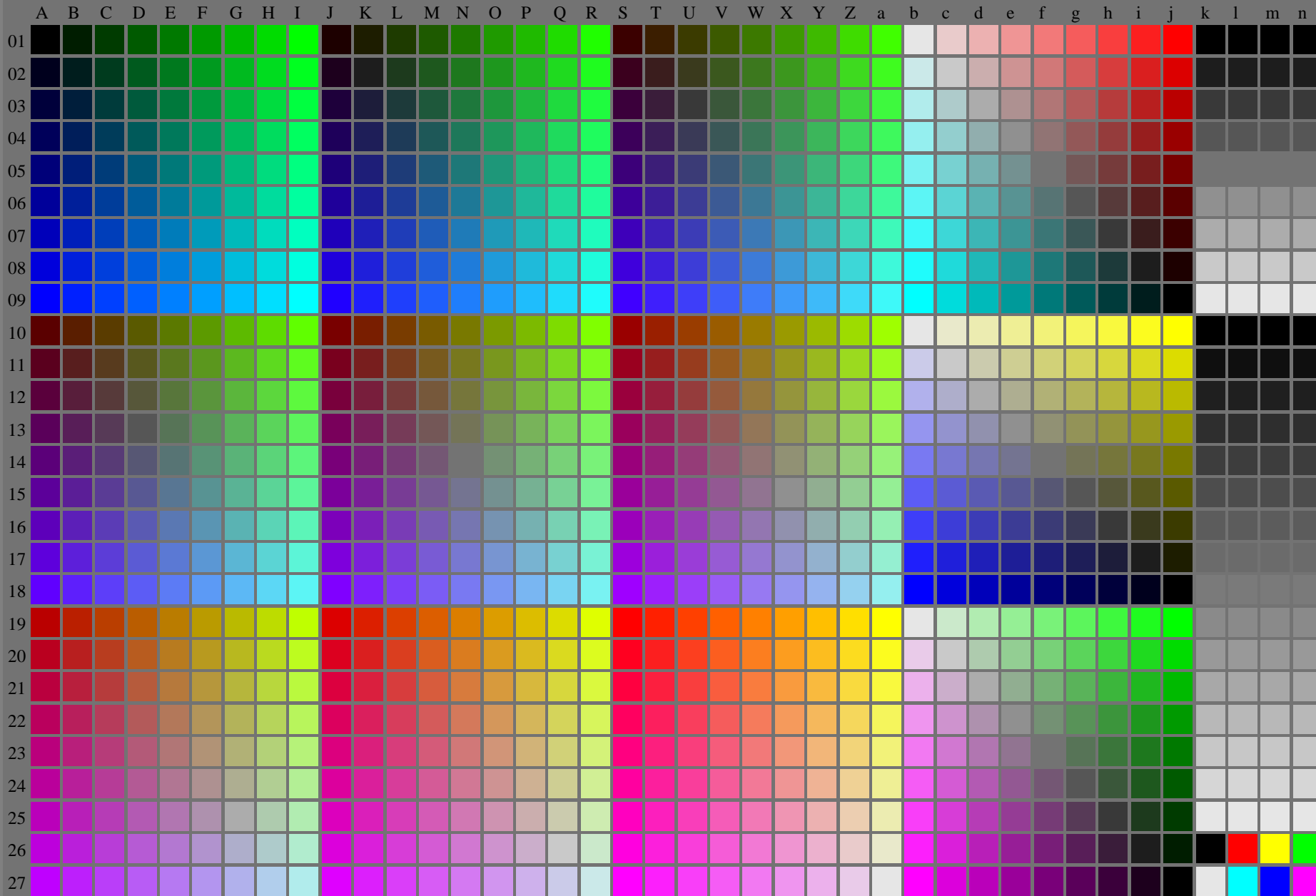


vea archivos semejantes: http://farbe.li.tu-berlin.de/AF89/AF89LONA.TXT PS  
información técnica: http://www.ps.bamde.com/ftp/130.149.60.45/~fabmetrik

TUB material: 20.11.60501 AF89/AF89LONA.TXT PS  
application for measurement of printer or monitor systems  
TUB material: code=ha4fa

Table with columns labeled A through n and rows labeled 0000 A01 through 0999 n03. Each cell contains a numerical value representing a color calibration parameter.

http://farbe.li.tu-berlin.de/AF89/AF89L0NA.TXT /.PS; start output  
N: No Output Linearization (OL) data in File (F), Startup (S) or Device (D)5/16



vea archivos semejantes: <http://farbe.li.tu-berlin.de/AF89/AF89L0NA.TXT> / .PS  
información técnica: <http://www.ps.bam.de> o <http://130.149.60.45/~farbmetrik>

TUB matrícula: 20160501-AF89/AF89L0NA.TXT /.PS  
application for measurement of printer or monitor systems

TUB material: code=rh4ta

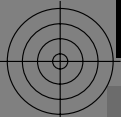
AF890-7N, 5/16

Tr=5%, (Fadin)

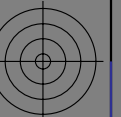
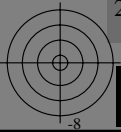
rgb setrgbcolor



<http://farbe.li.tu-berlin.de/AF89/AF89L0NA.TXT> /.PS; start output  
N: No Output Linearization (OL) data in File (F), Startup (S) or Device (D)7/16

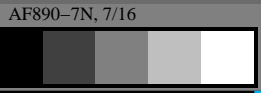
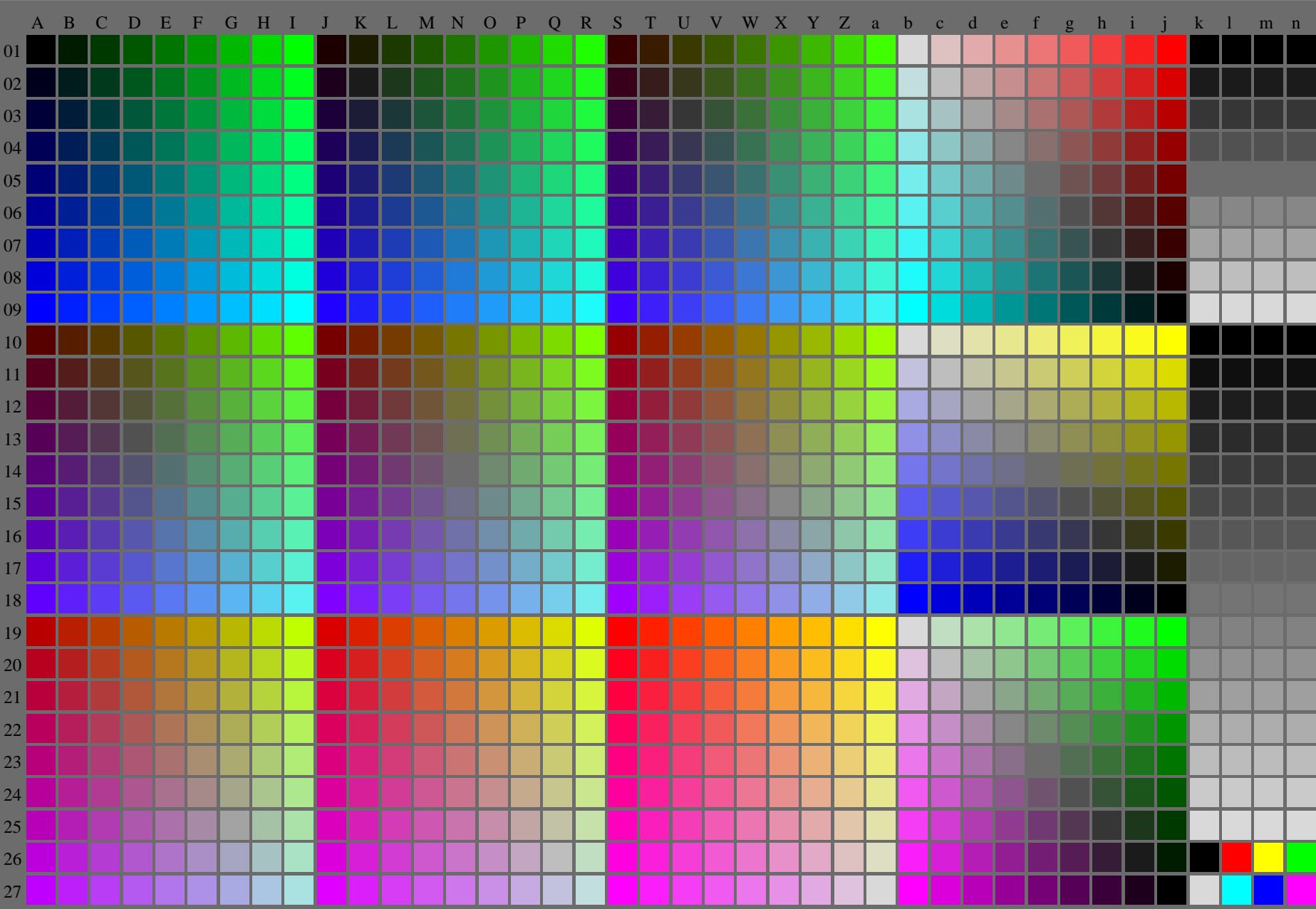
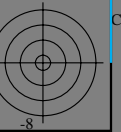


vea archivos semejantes: <http://farbe.li.tu-berlin.de/AF89/AF89.HTM>  
información técnica: <http://www.ps.bam.de> o <http://130.149.60.45/~farbmetrik>



TUB matrícula: 20160501-AF89/AF89L0NA.TXT /.PS  
application for measurement of printer or monitor systems

TUB material: code=rh4ta



$Tr=7,5\%$ , (Fadin)

rgb setrgbcolor



C M Y O L V

http://farbe.itu-berlin.de/AF89/AF89LONA.TXT /PS; start output  
N: No Output Linearization (CL) data in File (F), Startup (S) or Device (D) 8/16

vea archivos semejantes: http://farbe.itu-berlin.de/AF89/AF89LONA.TXT  
información técnica: http://www.ps.bamde.com/ftp://130.149.60.45/~fabmetrik

TUB material: 201160501 AF89/AF89LONA.TXT /PS  
TUB material: code=ha4fa

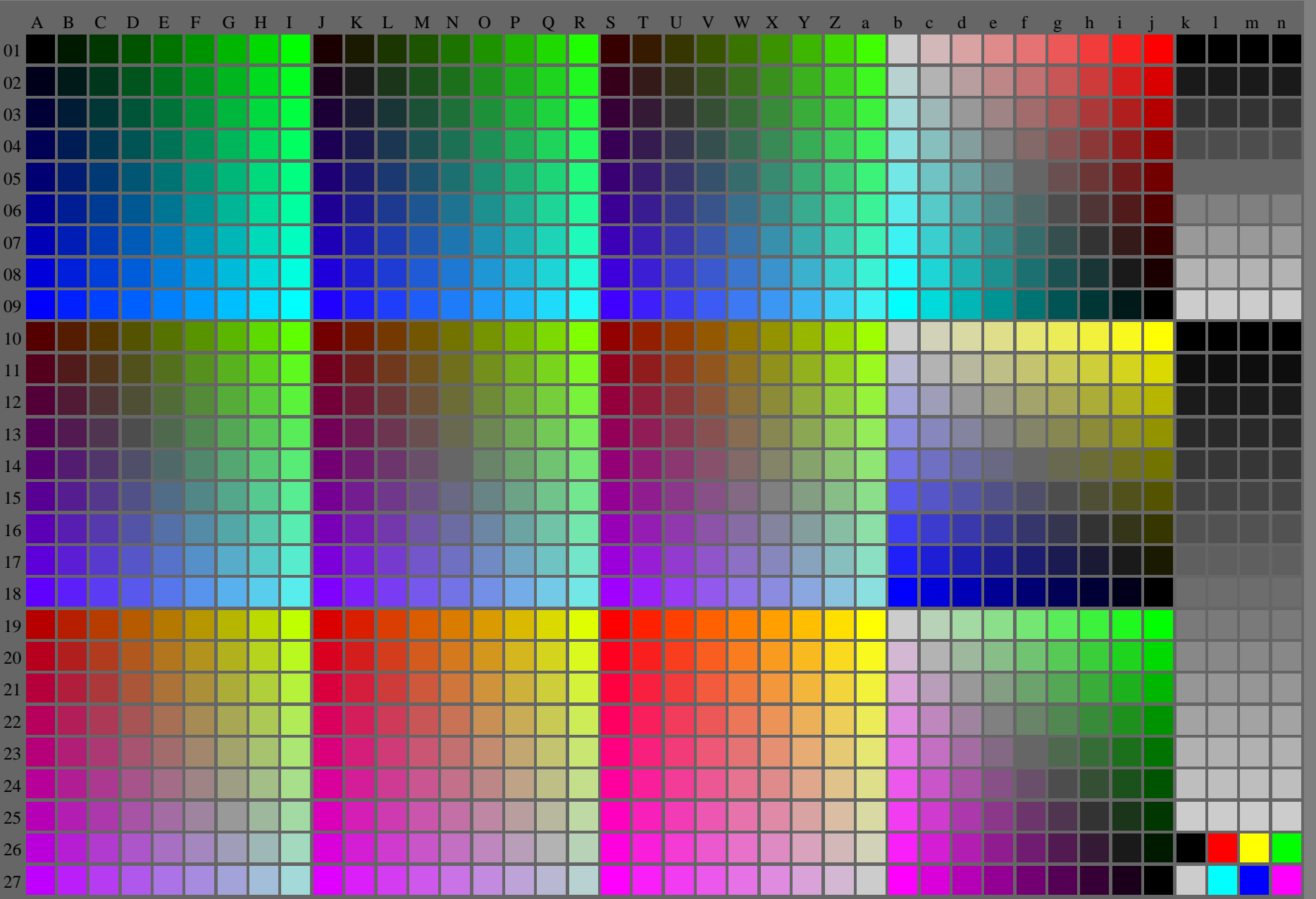
Table with columns A through n and rows 0000 A01 through 0999 n01. Each cell contains a numerical value representing color data for a specific device and color channel.

Tr=7,5% (Fadin)      rgb setrgbcolor



<http://farbe.li.tu-berlin.de/AF89/AF89L0NA.TXT> /.PS; start output  
N: No Output Linearization (OL) data in File (F), Startup (S) or Device (D)9/16

vea archivos semejantes: <http://farbe.li.tu-berlin.de/AF89/AF89.HTM>  
información técnica: <http://www.ps.bam.de> o <http://130.149.60.45/~farbmetrik>



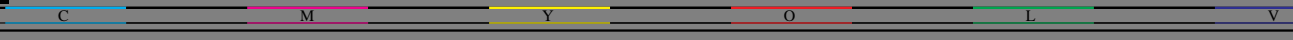
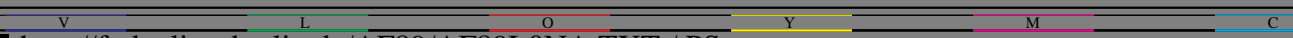
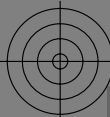
TUB matrícula: 20160501-AF89/AF89L0NA.TXT /.PS  
application for measurement of printer or monitor systems

TUB material: code=rh4ta

AF890-7N, 9/16

$Tr=10\%$ , (Fadin)

rgb setrgbcolor



http://farbe.li.tu-berlin.de/AF89/AF89LONA.TXT PS; start output  
N: No Output Linearization (CL) data in File (F), Setup (S) or Device (D) 10/16

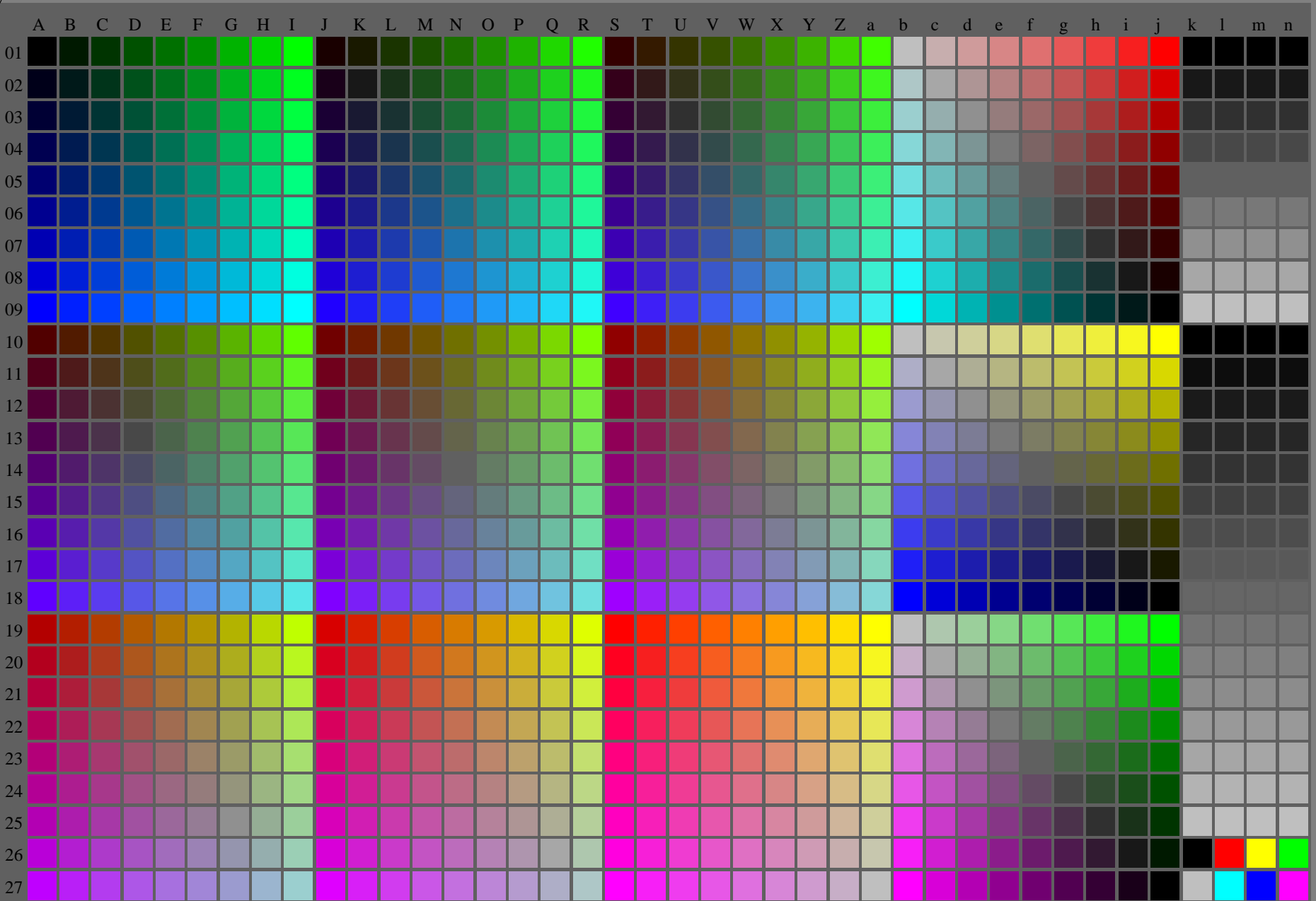
vea archivos semejantes: http://farbe.li.tu-berlin.de/AF89/AF89.HTM  
información técnica: http://www.ps.bamde.com/http://130.149.60.45/~farmetrik

TUB material: 201160501-AF89/AF89LONATXT .PS  
TUB material: code=thafita

Table with columns A through n and rows 0000 A01 through 0975 27. Each cell contains a numerical value representing color calibration data for the 'rgb setrgbcolor' profile.

Tr=10% (Fadin) rgb setrgbcolor

<http://farbe.li.tu-berlin.de/AF89/AF89L0NA.TXT> /.PS; start output  
N: No Output Linearization (OL) data in File (F), Startup (S) or Device (D)11/16



vea archivos semejantes: <http://farbe.li.tu-berlin.de/AF89/AF89.HTM>  
información técnica: <http://www.ps.bam.de> o <http://130.149.60.45/~farbmetrik>

TUB matrícula: 20160501-AF89/AF89L0NA.TXT /.PS  
application for measurement of printer or monitor systems

TUB material: code=rh4ta

AF890-7N, 11/16

Tr=12,5%, (Fadin)

rgb setrgbcolor

http://farbe.li.tu-berlin.de/AF89/AF89LONA.TXT PS: start output  
N: No Output Linearization (CL) data in File (F), Startup (S) or Device (D) 12/16

TUB material: 2011.60501/AF89/AF89LONA.TXT / PS

TUB material: code=hafta

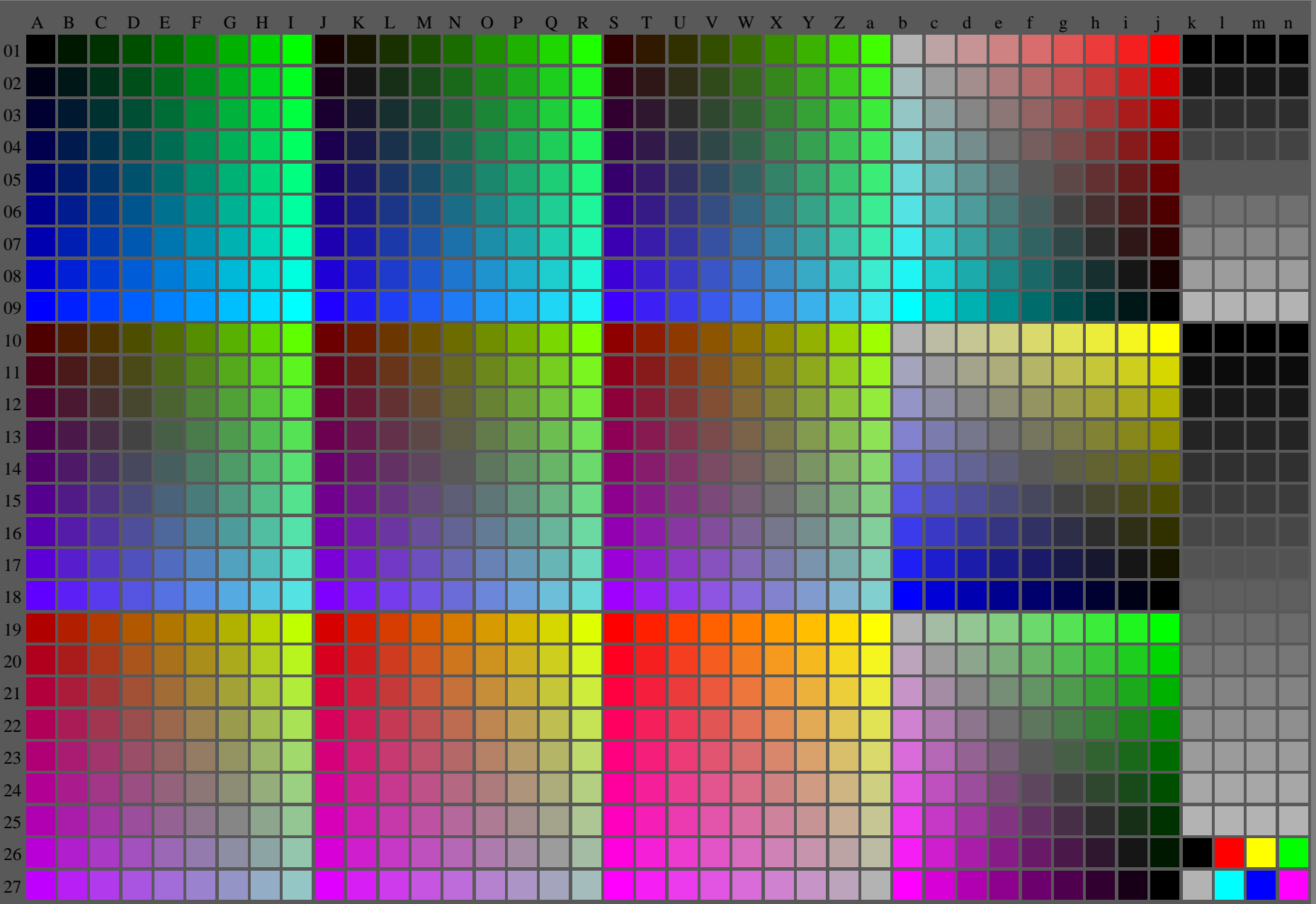
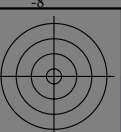
vea archivos semejantes: http://farbe.li.tu-berlin.de/AF89/AF89.HTM  
información técnica: http://www.ps.bamde.org/htp://30.149.60.45/~fabmetik

Table with columns labeled A through n and rows numbered 0000 to 0999. Each cell contains numerical data representing color calibration values. The table is a dense grid of numbers used for printer calibration.

Tr = 12,5%, (Fadin)

rgb setrgbcolor

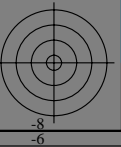
<http://farbe.li.tu-berlin.de/AF89/AF89L0NA.TXT> /.PS; start output  
N: No Output Linearization (OL) data in File (F), Startup (S) or Device (D)13/16



vea archivos semejantes: <http://farbe.li.tu-berlin.de/AF89/AF89.HTM>  
información técnica: <http://www.ps.bam.de> o <http://130.149.60.45/~farbmetrik>

TUB matrícula: 20160501-AF89/AF89L0NA.TXT /.PS  
application for measurement of printer or monitor systems

TUB material: code=rh4ta



AF890-7N, 13/16

Tr=15%, (Fadin)

rgb setrgbcolor

C M Y O L V



http://farbe.li.tu-berlin.de/AF89/AF89L0NA.TXT PS; start output  
N: No Output Linearization (L), data in File (F), Startup (S) or Device (D) 14/16

Large grid of data values (0.0000 to 0.9999) for colors a through n.

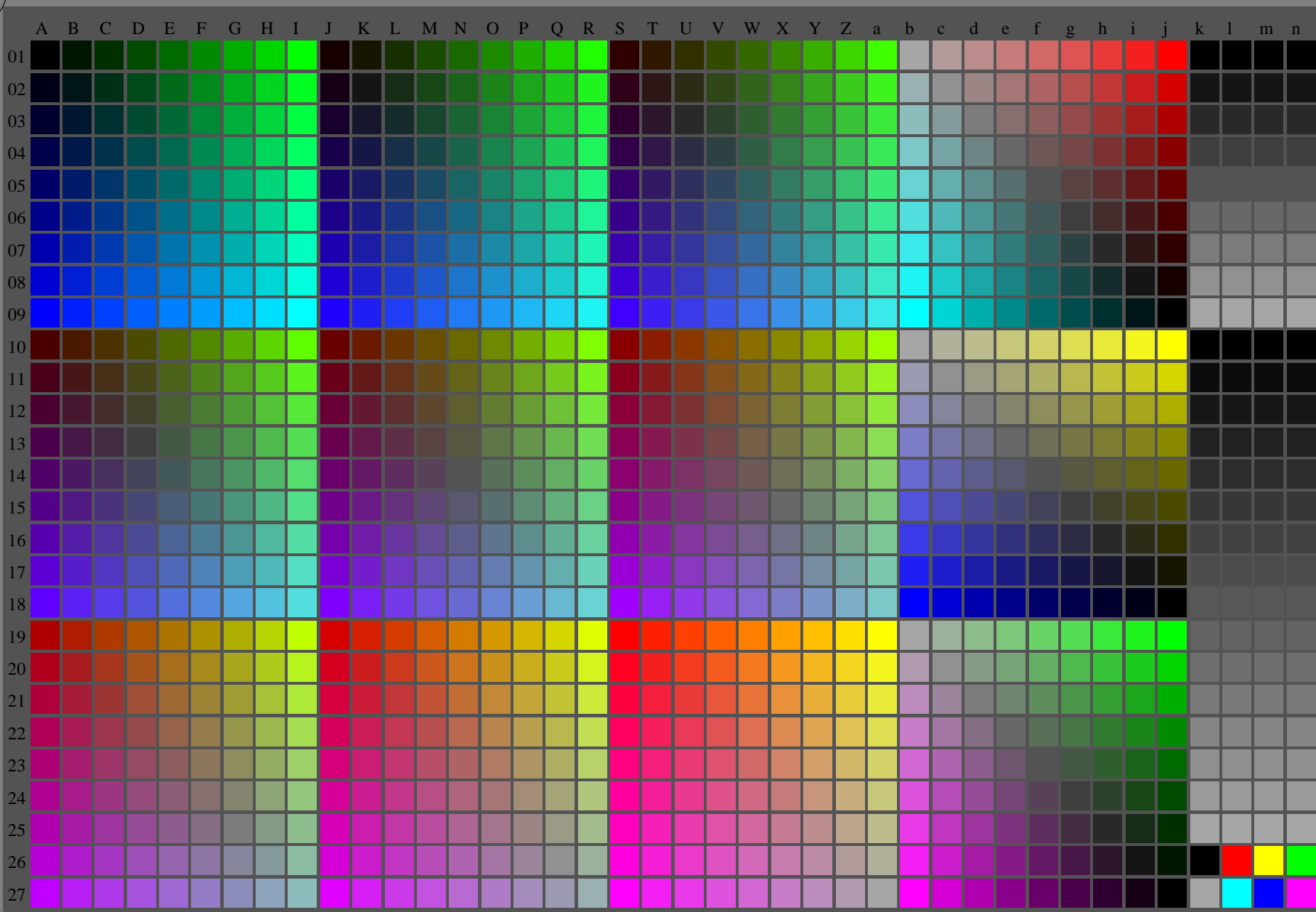
vea archivos semejantes: http://farbe.li.tu-berlin.de/AF89/AF89L0NA.TXT PS  
información técnica: http://www.ps.farbande.com/ntpp/130.149.60.45/~farbmetrik

TUB matricula: 201160501-AF89/AF89L0NA.TXT PS  
TUB material: code=ha4fa

Tr=15% (Fadin)

rgb setrgb color

vea archivos semejantes: <http://farbe.li.tu-berlin.de/AF89/AF89.HTM>  
información técnica: <http://www.ps.bam.de> o <http://130.149.60.45/~farbmetrik>



TUB matrícula: 20160501-AF89/AF89L0NA.TXT /.PS  
application for measurement of printer or monitor systems

TUB material: code=rh4ta



AF890-7N, 15/16

Tr=17,5%, (Fadin)

rgb setrgbcolor

