

http://farbe.li.tu-berlin.de/AF89/AF89LONP.PDF /.PS; start output
N: No Output Linearization (OL) data in File (F), Startup (S) or Device (D)2/16

vea archivos semejantes: http://farbe.li.tu-berlin.de/AF89/AF89.LONP.PDF /.PS
información técnica: http://www.ps.dam.de/otftp://130.149.60.45/~fabmetrik

Table with columns labeled A through n and rows labeled 0000 A01 through 0271 B01. Each cell contains numerical data for color calibration, representing the RGB values after linearization.

$$Tr=0\%, \text{Fadin}$$

rgb setrgbcolor

TUB matricula: 201160501-AF89/AF89LONP.PDF /.PS
TUB material: code=thaf14ta

vea archivos semejantes: http://farbe.li.tu-berlin.de/AF89/AF89LONP.PDF / .PS; start output
información técnica: http://www.ps.bandm.de/ftp/130.149.60.45/~fabmetrik

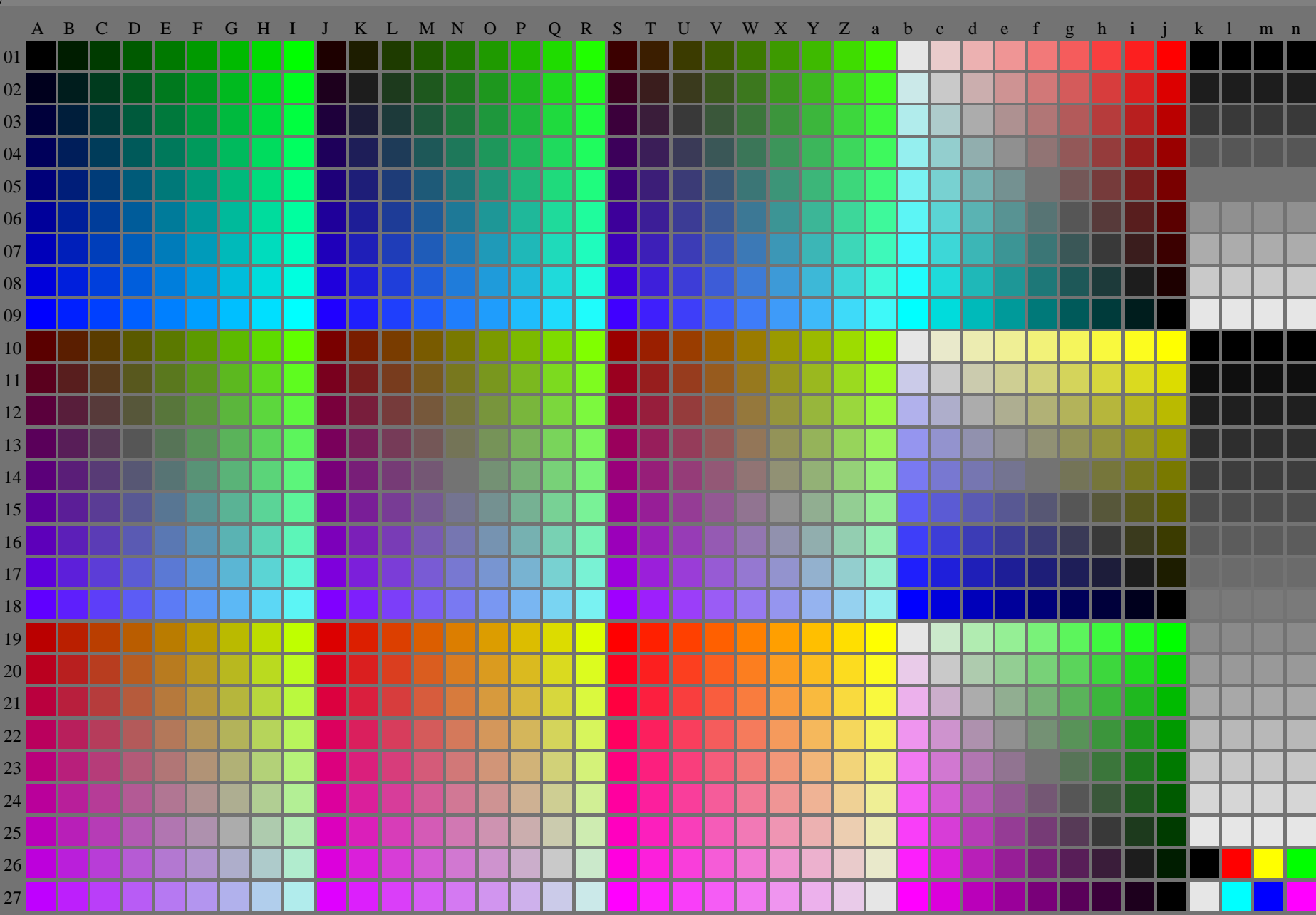
TUB material: 2011.60501- AF89/AF89LONP.PDF / .PS
application for measurement of printer or monitor systems
TUB material: code=ha4fa

Table with columns labeled A through n and rows labeled 0000 A01 through 0999 n01. Each cell contains a numerical value representing color calibration data.

http://farbe.li.tu-berlin.de/AF89/AF89L0NP.PDF /.PS; start output

N: No Output Linearization (OL) data in File (F), Startup (S) or Device (D)5/16

vea archivos semejantes: <http://farbe.li.tu-berlin.de/AF89/AF89.HTM>
información técnica: <http://www.ps.bam.de> o <http://130.149.60.45/~farbmetrik>

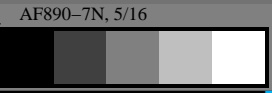


TUB matrícula: 20160501-AF89/AF89L0NP.PDF /.PS
application for measurement of printer or monitor systems

TUB material: code=rh4ta

Tr=5%, (Fadin)

rgb setrgbcolor



C M Y O L V

vea archivos semejantes: http://farbe.li.tu-berlin.de/AF89/AF89LONP.PDF

información técnica: http://www.ps.band.de/AF89/AF89LONP.PDF

AF890 - 72n / 6/16

http://farbe.li.tu-berlin.de/AF89/AF89LONP.PDF / PS; start output N: No Output Linearization (OL) data in File (F), Startup (S) or Device (D) 6/16

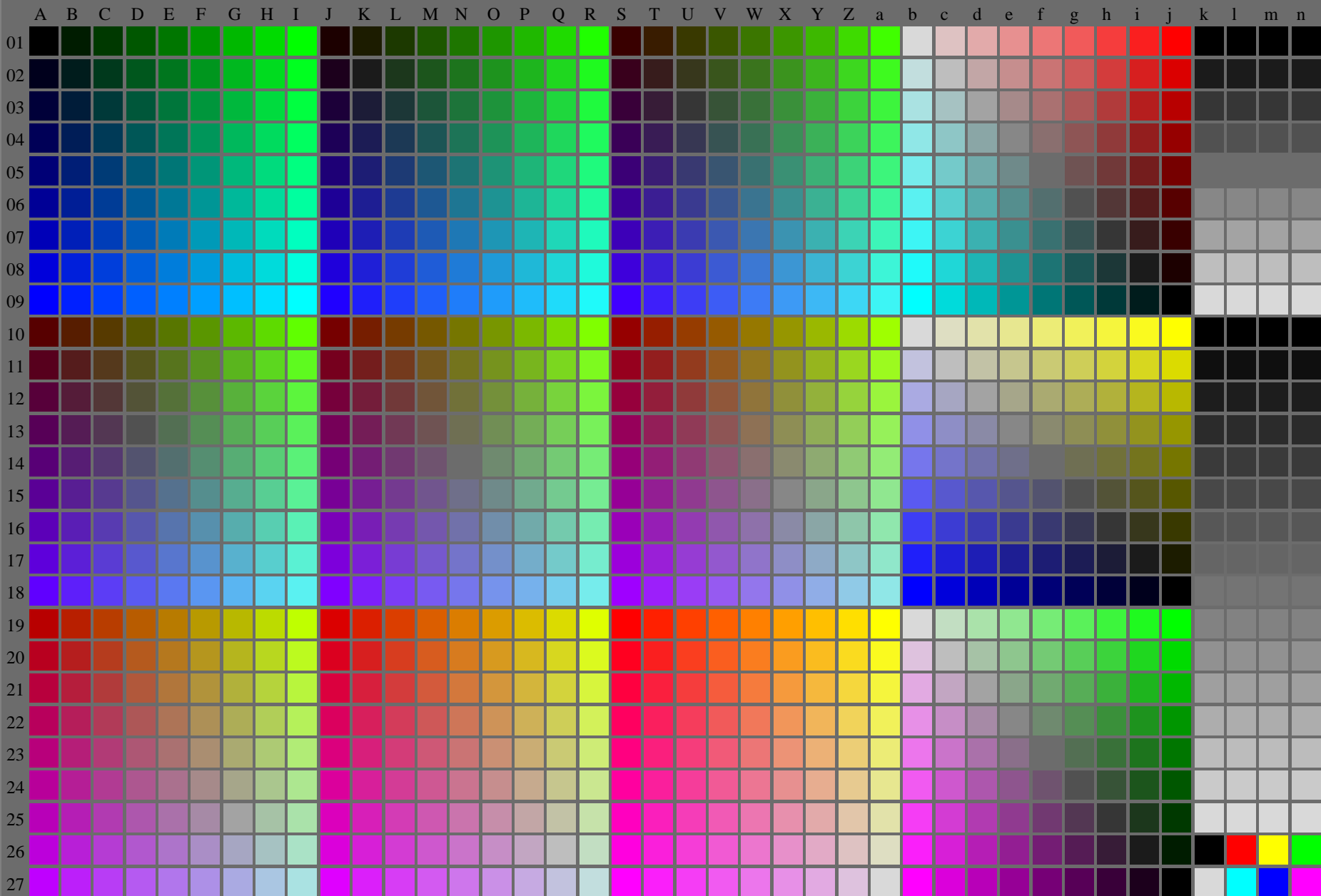
Color calibration table with columns A-M and rows 0000 A01 to 0989 A24. Each cell contains a 4-digit hex code representing color values.

Tr=5%, (FadIn)

rgb setrgbcolor

TUB material: 201160501/AF89/AF89LONP.PDF PS TUB material. code=ha4ta

<http://farbe.li.tu-berlin.de/AF89/AF89L0NP.PDF> /.PS; start output
N: No Output Linearization (OL) data in File (F), Startup (S) or Device (D)7/16



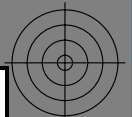
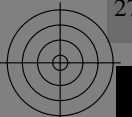
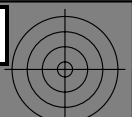
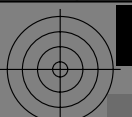
vea archivos semejantes: <http://farbe.li.tu-berlin.de/AF89/AF89.HTM>
información técnica: <http://www.ps.bam.de> o <http://130.149.60.45/~farbmeterik>

TUB matrícula: 20160501-AF89/AF89L0NP.PDF /.PS
application for measurement of printer or monitor systems
TUB material: code=rh4ta

AF890-7N, 7/16

Tr=7,5%, (Fadin)

rgb setrgbcolor



http://farbe.li.tu-berlin.de/AF89/AF89LONP.PDF / .PS; start output
N: No Output Linearization (CL) data in File (F), Startup (S) or Device (D) 8/16

vea archivos semejantes: http://farbe.li.tu-berlin.de/AF89/AF89LONP.PDF / .PS; start output
información técnica: http://www.ps.bamde.com/ftp://130.149.60.45/~fabmetrik

TUB material: 201160501-AF89/AF89LONP.PDF / .PS
TUB material: code=ha4fa

Table with columns labeled A through n and rows labeled 0000 A01 through 0999 n01. Each cell contains a numerical value representing color data for a specific device and color channel.

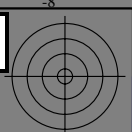
Tr=7,5%, (Fadin) rgb setrgbcolor

A	B	C	D	E	F	G	H	I	J	K	L	M	N	O	P	Q	R	S	T	U	V	W	X	Y	Z	a	b	c	d	e	f	g	h	i	j	k	l	m	n																																																													
0000 A00	0009 B00	0018 C00	0027 D00	0036 E00	0045 F00	0054 G00	0063 H00	0072 I00	0081 J00	0090 K00	0100 L00	0109 M00	0118 N00	0127 O00	0136 P00	0144 Q00	0153 R00	0162 S00	0171 T00	0180 U00	0189 V00	0198 W00	0207 X00	0216 Y00	0225 Z00	0234 a00	0243 b00	0252 c00	0261 d00	0270 e00	0279 f00	0288 g00	0297 h00	0306 i00	0315 j00	0324 k00	0333 l00	0342 m00	0351 n00																																																													
0000 0.0	0001 0.003	0002 0.010	0003 0.017	0004 0.024	0005 0.031	0006 0.038	0007 0.045	0008 0.052	0009 0.059	0010 0.066	0011 0.073	0012 0.080	0013 0.087	0014 0.094	0015 0.101	0016 0.108	0017 0.115	0018 0.122	0019 0.129	0020 0.136	0021 0.143	0022 0.150	0023 0.157	0024 0.164	0025 0.171	0026 0.178	0027 0.185	0028 0.192	0029 0.199	0030 0.206	0031 0.213	0032 0.220	0033 0.227	0034 0.234	0035 0.241	0036 0.248	0037 0.255	0038 0.262	0039 0.269	0040 0.276	0041 0.283	0042 0.290	0043 0.297	0044 0.304	0045 0.311	0046 0.318	0047 0.325	0048 0.332	0049 0.339	0050 0.346	0051 0.353	0052 0.360	0053 0.367	0054 0.374	0055 0.381	0056 0.388	0057 0.395	0058 0.402	0059 0.409	0060 0.416	0061 0.423	0062 0.430	0063 0.437	0064 0.444	0065 0.451	0066 0.458	0067 0.465	0068 0.472	0069 0.479	0070 0.486	0071 0.493	0072 0.500	0073 0.507	0074 0.514	0075 0.521	0076 0.528	0077 0.535	0078 0.542	0079 0.549	0080 0.556	0081 0.563	0082 0.570	0083 0.577	0084 0.584	0085 0.591	0086 0.598	0087 0.605	0088 0.612	0089 0.619	0090 0.626	0091 0.633	0092 0.640	0093 0.647	0094 0.654	0095 0.661	0096 0.668	0097 0.675	0098 0.682	0099 0.689	0100 0.696

vea archivos semejantes: http://farbe.li.tu-berlin.de/AF89/AF89LONP.PDF ;PS; start output
 información técnica: http://www.ps.bamde.com/af89-tn-10/16

TUB material: 201160501-AF89/AF89LONP.PDF ;PS; start output
 TUB material: code=ha4ta

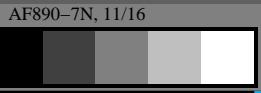
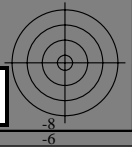
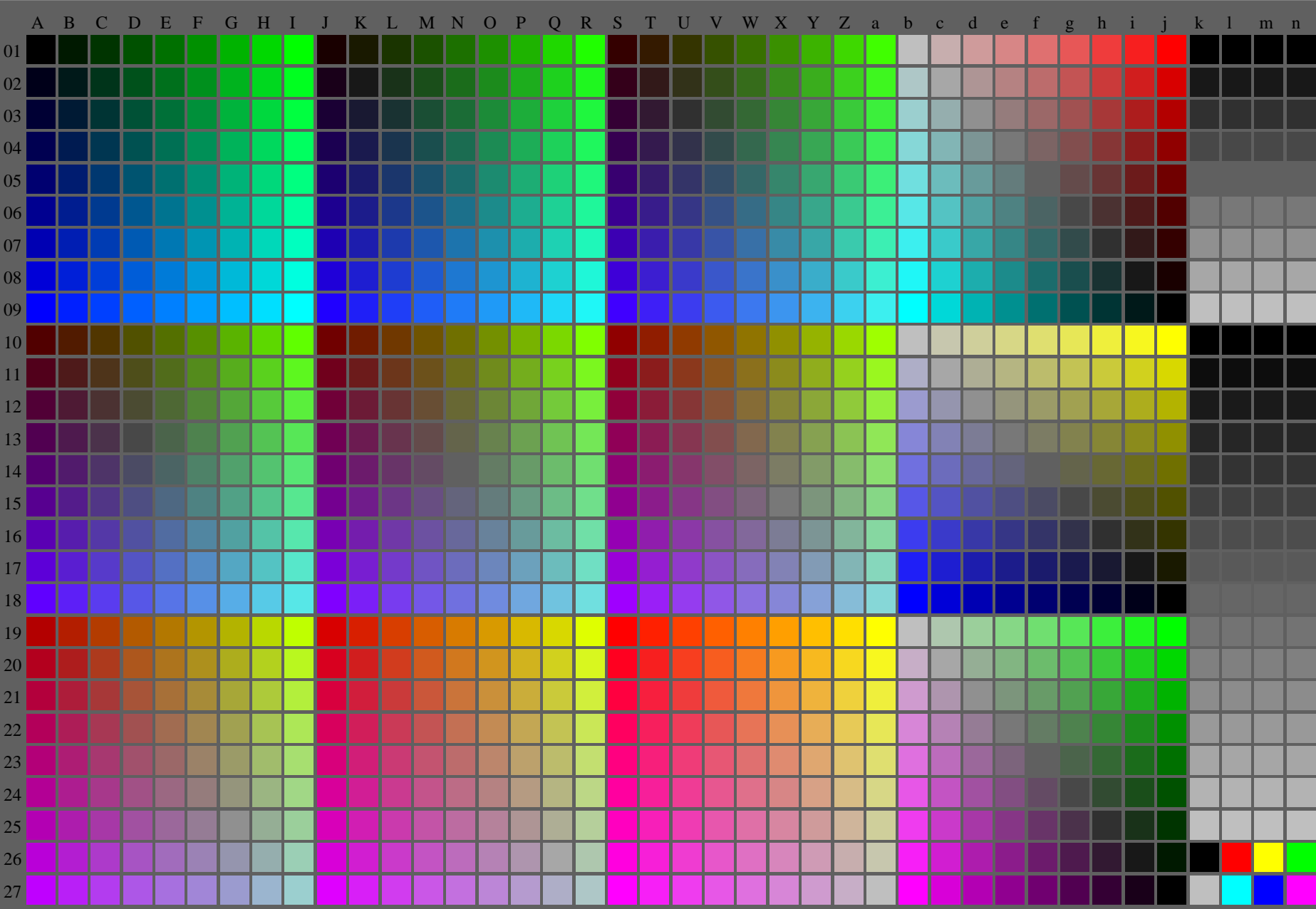
http://farbe.li.tu-berlin.de/AF89/AF89L0NP.PDF /.PS; start output
N: No Output Linearization (OL) data in File (F), Startup (S) or Device (D)11/16



vea archivos semejantes: <http://farbe.li.tu-berlin.de/AF89/AF89.HTM>
información técnica: <http://www.ps.bam.de> o <http://130.149.60.45/~farbmetrik>

TUB matrícula: 20160501-AF89/AF89L0NP.PDF /.PS
application for measurement of printer or monitor systems

TUB material: code=rh4ta



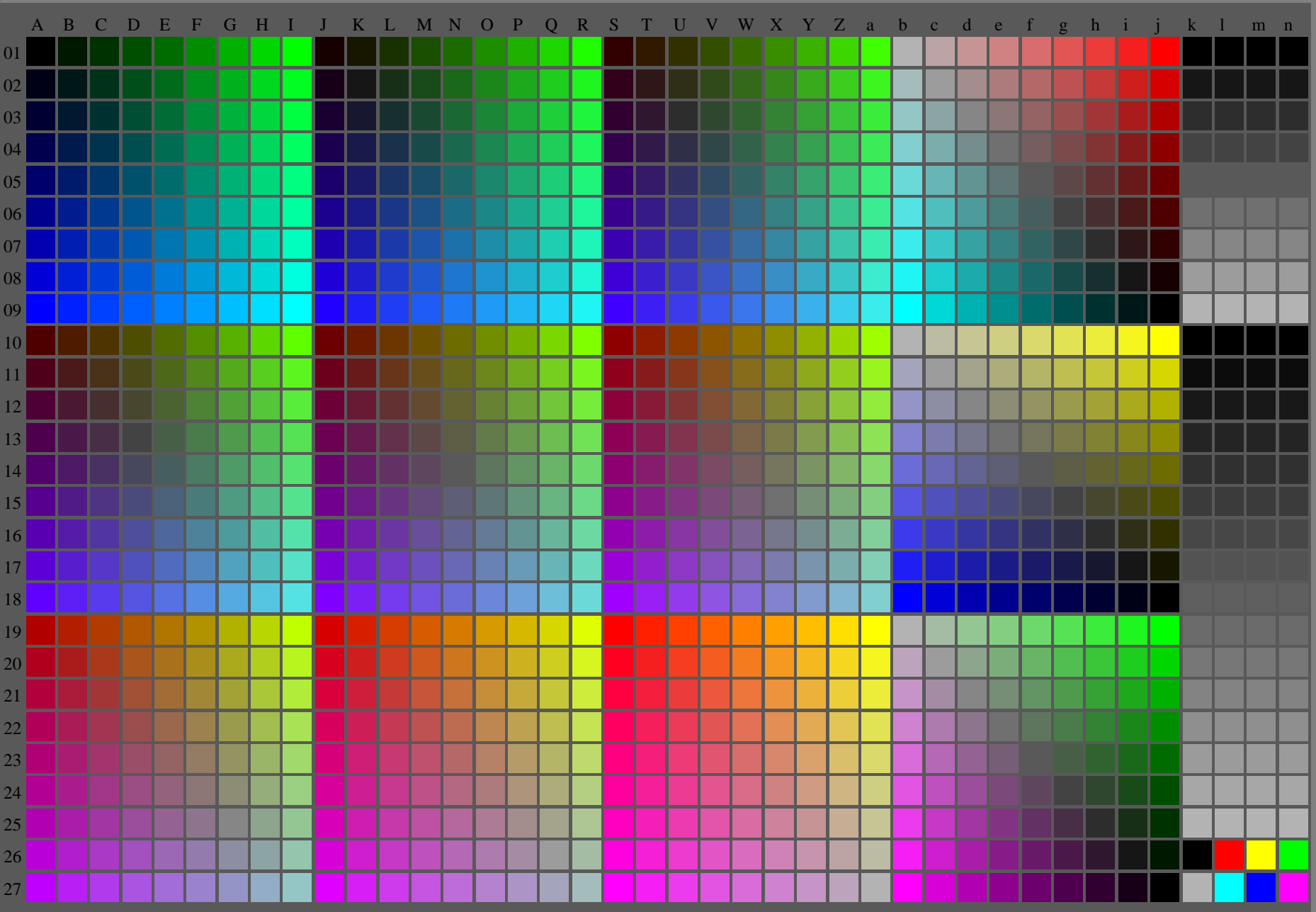
Tr=12,5%, (Fadin)

rgb setrgbcolor



C M Y O L V

<http://farbe.li.tu-berlin.de/AF89/AF89L0NP.PDF> /.PS; start output
N: No Output Linearization (OL) data in File (F), Startup (S) or Device (D)13/16



vea archivos semejantes: <http://farbe.li.tu-berlin.de/AF89/AF89.HTM>
información técnica: <http://www.ps.bam.de> o <http://130.149.60.45/~farbmetrik>

TUB matrícula: 20160501-AF89/AF89L0NP.PDF /.PS
application for measurement of printer or monitor systems

TUB material: code=rh4ta

AF890-7N, 13/16

$Tr=15\%$, (Fadin)

rgb setrgbcolor

Color calibration chart with color bars (V, L, O, Y, M, C) and registration marks (crosshairs) at the corners. The chart is used for printer or monitor systems measurement.

vea archivos semejantes: <http://farbe.li.tu-berlin.de/AF89/AF89LONP.PDF>; start output
información técnica: <http://www.ps.bandm.com/ftp/130.149.60.45/~farbmetrik>

TUB matricial: 201160501-AF89/AF89LONP.PDF PS
TUB material: code="ha4fa"

AF890-7N, 14/16

<http://farbe.li.tu-berlin.de/AF89/AF89LONP.PDF>; start output
N: No Output Linearization (L), data in File (F), Startup (S) or Device (D) 14/16

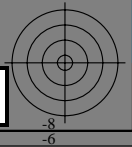
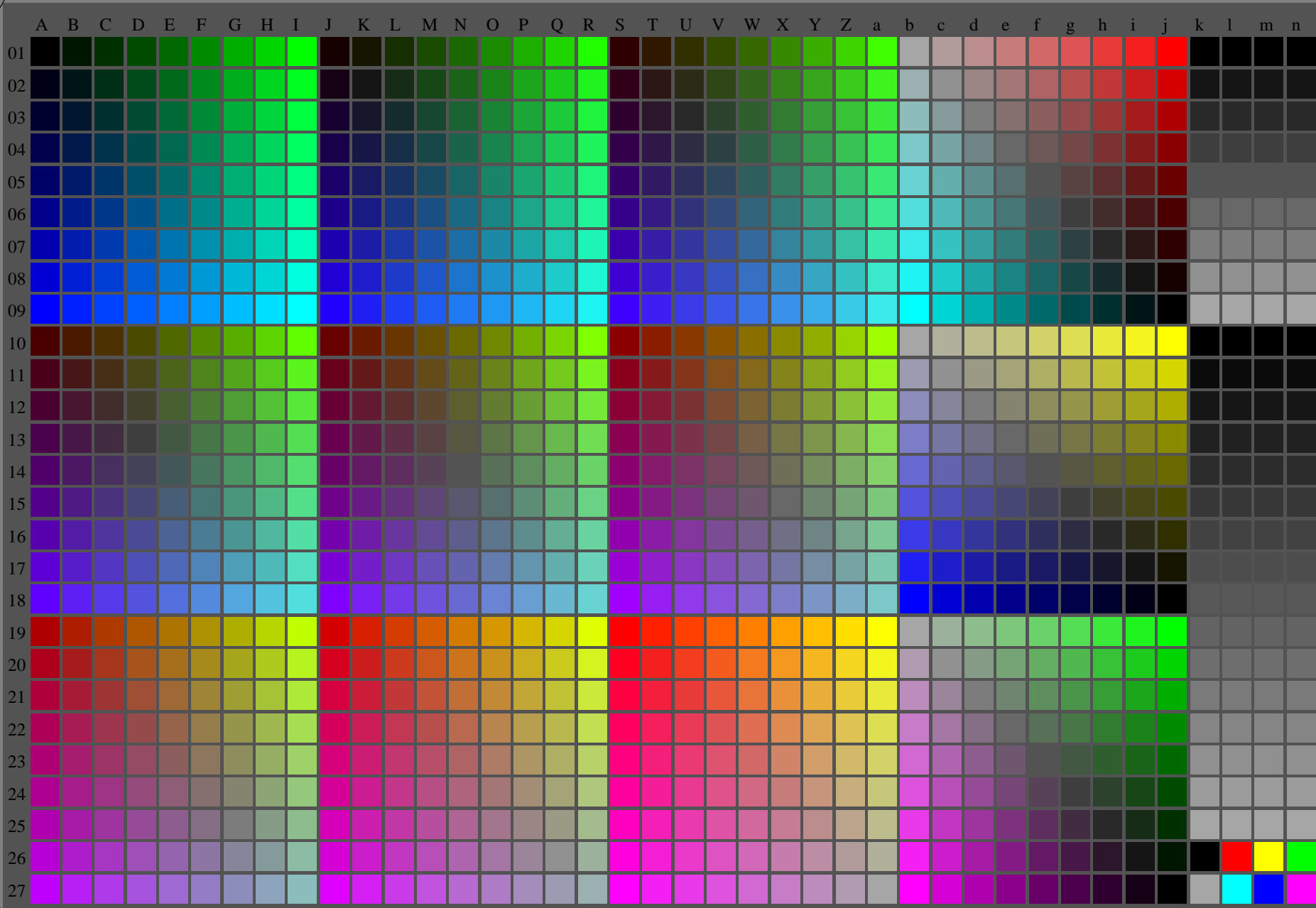
Table with columns A through n and rows 0000 A01 through 0999 n01. Each cell contains numerical data representing color calibration values.

Tr=15% (Fadin)

rgb setrgb color

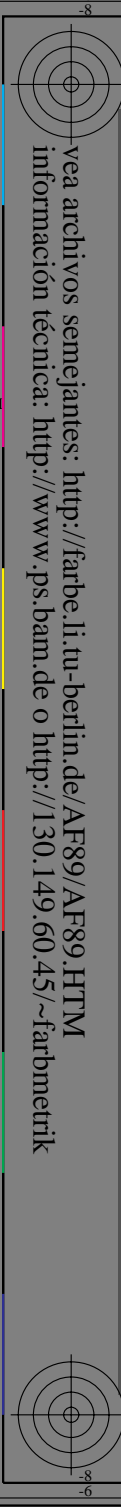
vea archivos semejantes: <http://farbe.li.tu-berlin.de/AF89/AF89.HTM>
información técnica: <http://www.ps.bam.de> o <http://130.149.60.45/~farbmtryk>

TUB matrícula: 20160501-AF89/AF89L0NP.PDF /.PS
application for measurement of printer or monitor systems
TUB material: code=rh4ta



AF890-7N, 15/16
 $Tr=17,5\%$, (Fadin)

rgb setrgbcolor

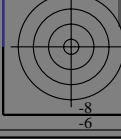


http://farbe.li.tu-berlin.de/AF89/AF89LONP.PDF /PS; start output
N: No Output Linearization (CL) data in File (F) or Device (D) 16/16

vea archivos semejantes: <http://farbe.li.tu-berlin.de/AF89/AF89LONP.PDF>
información técnica: <http://www.ps.baum.de/ontp://30.149.60.45/~farmbetr>

A	B	C	D	E	F	G	H	I	J	K	L	M	N	O	P	Q	R	S	T	U	V	X	Y	Z	a	b	c	d	e	f	g	h	i	j	k	l	m	n
0000 A0	0000 B0	0000 C0	0000 D0	0000 E0	0000 F0	0000 G0	0000 H0	0000 I0	0000 J0	0000 K0	0000 L0	0000 M0	0000 N0	0000 O0	0000 P0	0000 Q0	0000 R0	0000 S0	0000 T0	0000 U0	0000 V0	0000 X0	0000 Y0	0000 Z0	0000 a0	0000 b0	0000 c0	0000 d0	0000 e0	0000 f0	0000 g0	0000 h0	0000 i0	0000 j0	0000 k0	0000 l0	0000 m0	0000 n0
0000 A1	0000 B1	0000 C1	0000 D1	0000 E1	0000 F1	0000 G1	0000 H1	0000 I1	0000 J1	0000 K1	0000 L1	0000 M1	0000 N1	0000 O1	0000 P1	0000 Q1	0000 R1	0000 S1	0000 T1	0000 U1	0000 V1	0000 X1	0000 Y1	0000 Z1	0000 a1	0000 b1	0000 c1	0000 d1	0000 e1	0000 f1	0000 g1	0000 h1	0000 i1	0000 j1	0000 k1	0000 l1	0000 m1	0000 n1

TUB material: 201160501 AF89/AF89LONP.PDF /PS
TUB material: code=ha4fa



AF890-ZN, 16/16

$Tr = 17,5\%$, (Fadin) *rgb setrgbcolor*

