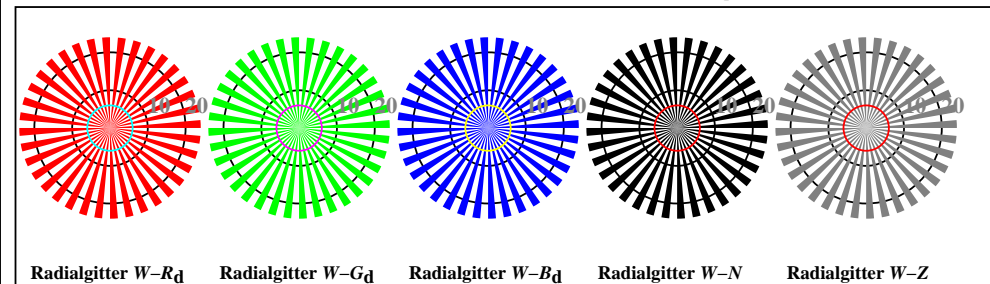




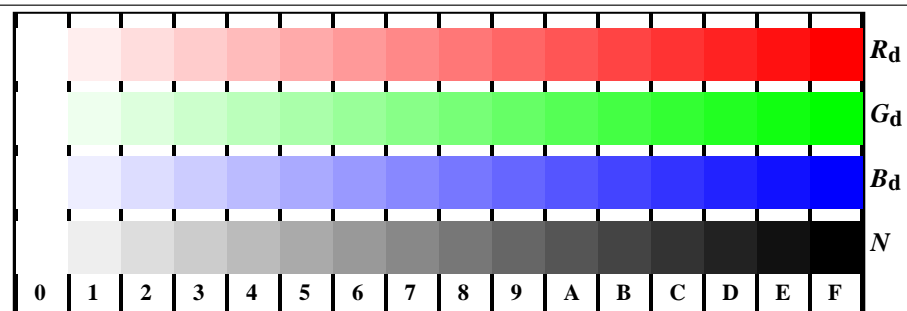
AG180-3, Bild D1W\*dd: Blumenmotiv, 14 CIE-Prüffarben und 2 + 16 Graustufen (sf); PS-Operatoren *settransfer*, *3 colorimage*



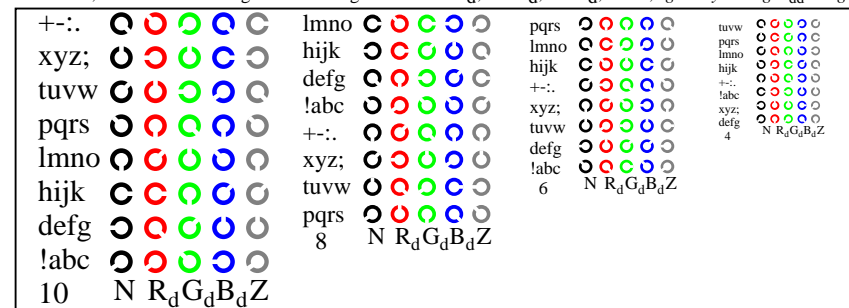
AG180-5, Bild D2W\*dd: Radialgitter  $W-R_d$ ;  $W-G_d$ ;  $W-B_d$ ;  $W-N$ ; PS-Operator *rgb->rgb\*dd setrgbcolor*



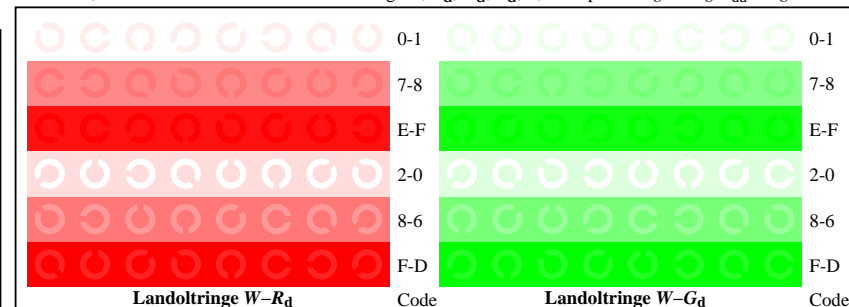
AG180-7, Bild D3W\*dd: 14 CIE-Prüffarben sowie 2 + 16 Graustufen (sf); *rgb/cmy0->rgb\*dd setrgbcolor*



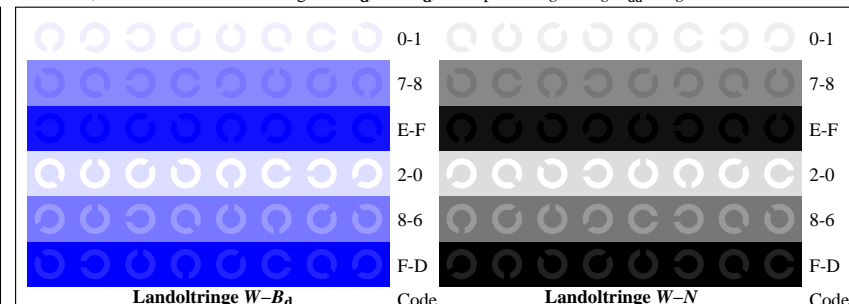
AG181-1, Bild D4W\*dd: 16 gleichabständige Stufen  $W-R_d$ ;  $W-G_d$ ;  $W-B_d$ ;  $W-N$ ; *rgb/cmy0->rgb\*dd setrgbcolor*



AG181-3, Bild D5W\*dd: Schrift und Landoltringe  $N$ ;  $R_d$ ;  $G_d$ ;  $B_d$ ;  $Z$ ; PS-Operator *rgb->rgb\*dd setrgbcolor*



AG181-5, Bild D6W\*dd: Landoltringe  $W-R_d$ ;  $W-G_d$ ; PS-Operator *rgb->rgb\*dd setrgbcolor*



AG181-7, Bild D7W\*dd: Landoltringe  $W-B_d$ ;  $W-N$ ; PS-Operator *rgb->rgb\*dd setrgbcolor*