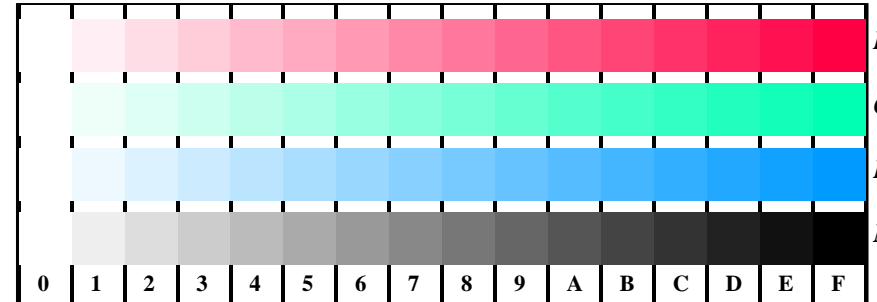
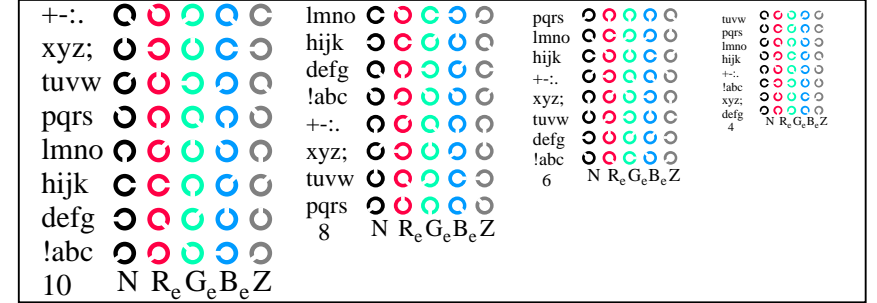


vedevi file simili: <http://farbe.li.tu-berlin.de/AI16/AI16.HTM>
 Informazioni tecniche: <http://farbe.li.tu-berlin.de/> o <http://farbe.li.tu-berlin.de/AE.HTM>

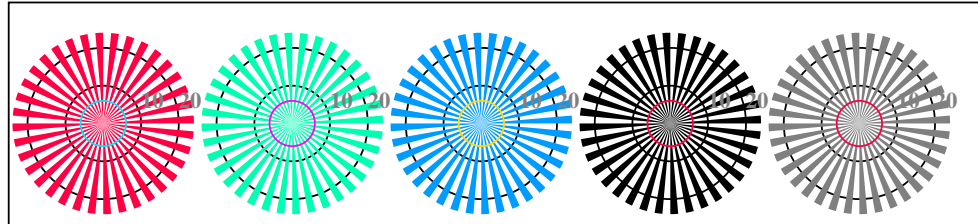
iscrizione TUB: 20190301-AI16/AI16L0FA.TXT /.PS
 Applicazione per la misura dell'output di display et output di stampa
 TUB materiale: code=rhata



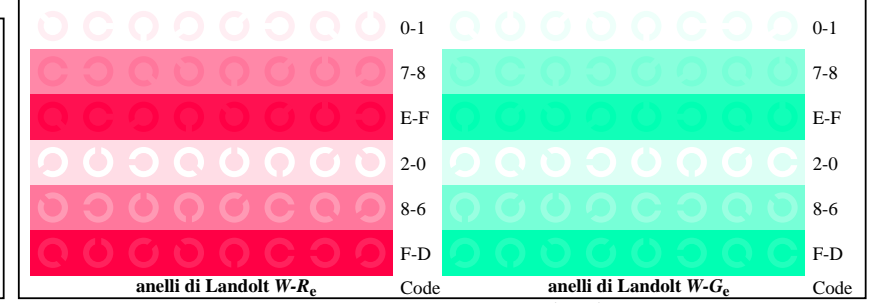
AI161-1, Fig. D4Wde: 16 equidistante passi $W-R_e$; $W-G_e$; $W-B_e$; $W-N$; $rgb/cmy0 \rightarrow rgb_{de}$ setrgbcolor



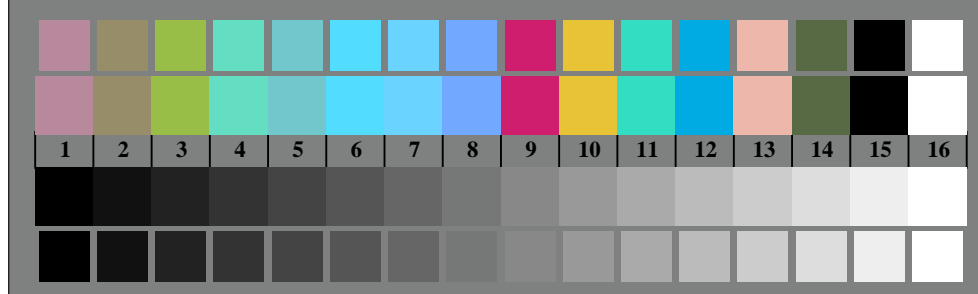
AI161-3, Fig. D5Wde: codice i Landolt anelli N ; R_e ; G_e ; B_e ; Z ; PS operator: $rgb \rightarrow rgb_{de}$ setrgbcolor



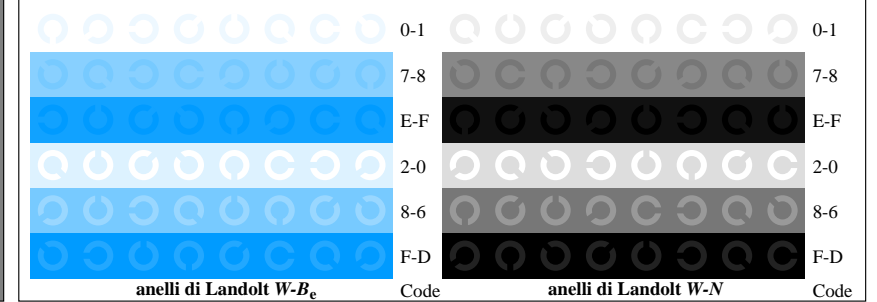
AI160-5, Fig. D2Wde: reticoli radiali $W-R_e$; $W-G_e$; $W-B_e$; $W-N$; PS operator: $rgb \rightarrow rgb_{de}$ setrgbcolor



AI161-5, Fig. D6Wde: anelli di Landolt $W-R_e$; $W-G_e$; PS operator: $rgb \rightarrow rgb_{de}$ setrgbcolor



AI160-7, Fig. D3Wde: 14 prova colori CIE i 2 + 16 grigio passi (sf); $rgb/cmy0 \rightarrow rgb_{de}$ setrgbcolor



AI161-7, Fig. D7Wde: anelli di Landolt $W-B_e$; $W-N$; PS operator: $rgb \rightarrow rgb_{de}$ setrgbcolor



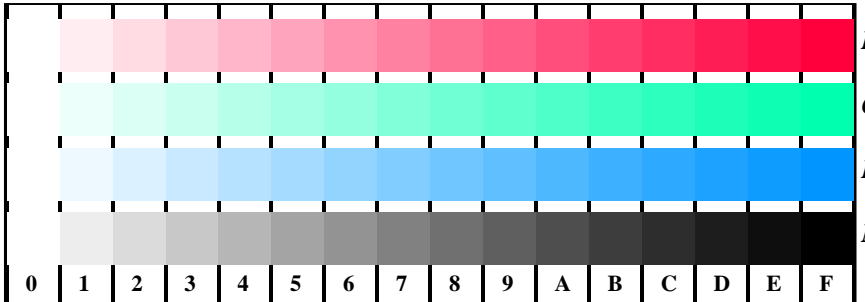
Grafico AI16 conformemente a grafico 4 a ISO/IEC 15775
 Tavola dei colori cromatici RGB

Input: $rgb/cmy0/000n/w$ set...
 Output: $\rightarrow rgb_{de}$ setrgbcolor

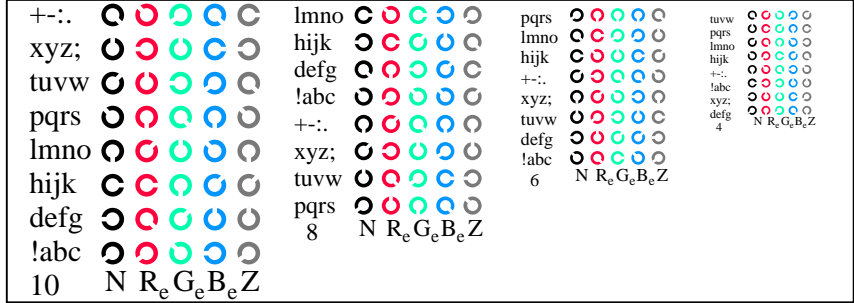


vedei file simili: <http://farbe.li.tu-berlin.de/AI16/AI16.HTM>
 Informazioni tecniche: <http://farbe.li.tu-berlin.de/> o <http://farbe.li.tu-berlin.de/AE.HTM>

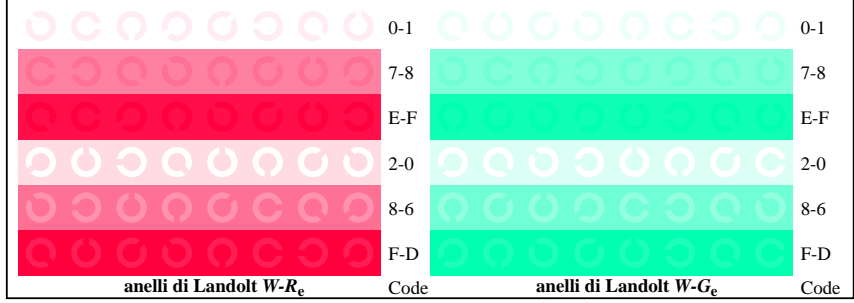
iscrizione TUB: 20190301-AI16/AI16L0FA.TXT /.PS
 Applicazione per la misura dell'output di display et output di stampa
 TUB materiale: code=rhata



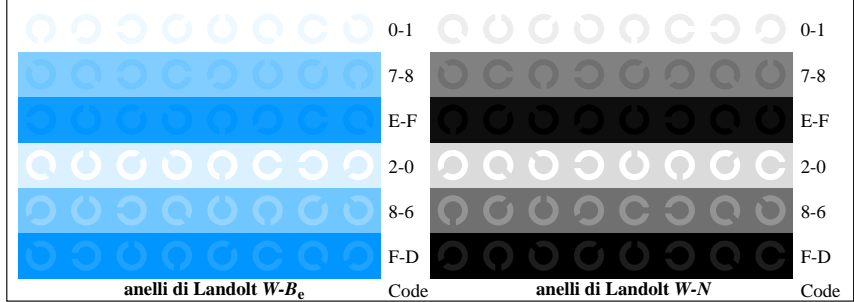
AI161-1, Fig. D4Wde: 16 equidistante passi $W-R_e$; $W-G_e$; $W-B_e$; $W-N$; $rgb/cmy0 \rightarrow rgb_{de}$ setrgbcolor



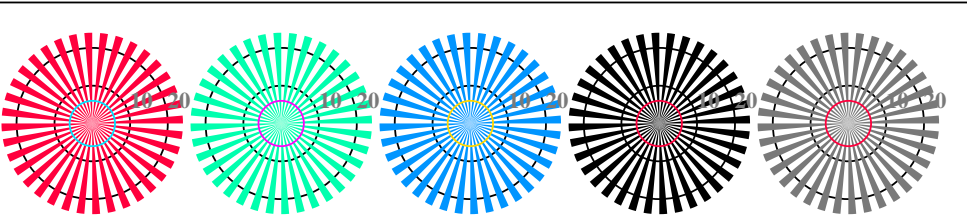
AI161-3, Fig. D5Wde: codice i Landolt anelli N ; R_e ; G_e ; B_e ; Z ; PS operator: $rgb \rightarrow rgb_{de}$ setrgbcolor



AI161-5, Fig. D6Wde: anelli di Landolt $W-R_e$; $W-G_e$; PS operator: $rgb \rightarrow rgb_{de}$ setrgbcolor

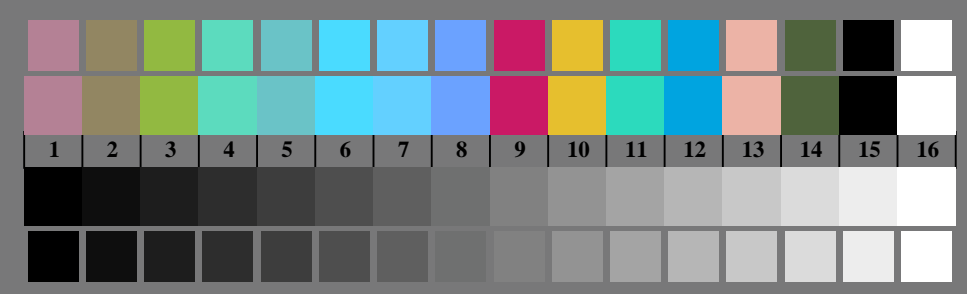


AI161-7, Fig. D7Wde: anelli di Landolt $W-B_e$; $W-N$; PS operator: $rgb \rightarrow rgb_{de}$ setrgbcolor



reticoli radiali $W-R_e$ reticoli radiali $W-G_e$ reticoli radiali $W-B_e$ reticoli radiali $W-N$ reticoli radiali $W-Z$

AI160-5, Fig. D2Wde: reticoli radiali $W-R_e$; $W-G_e$; $W-B_e$; $W-N$; PS operator: $rgb \rightarrow rgb_{de}$ setrgbcolor



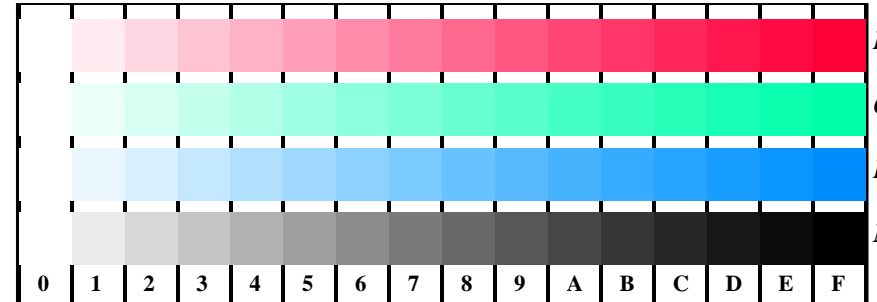
AI160-7, Fig. D3Wde: 14 prova colori CIE i 2 + 16 grigio passi (sf); $rgb/cmy0 \rightarrow rgb_{de}$ setrgbcolor

Grafico AI16 conformemente a grafico 4 a ISO/IEC 15775
 Tavola dei colori cromatici RGB

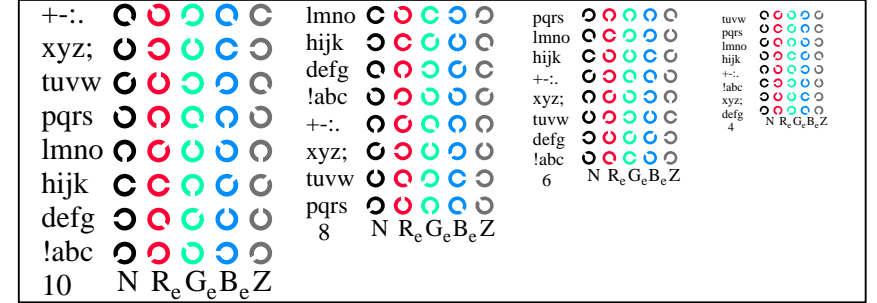
Input: $rgb/cmy0/000n/w$ set...
 Output: $\rightarrow rgb_{de}$ setrgbcolor

vedi file simili: <http://farbe.li.tu-berlin.de/AI16/AI16.HTM>
 informazioni tecniche: <http://farbe.li.tu-berlin.de/> o <http://farbe.li.tu-berlin.de/AE.HTM>

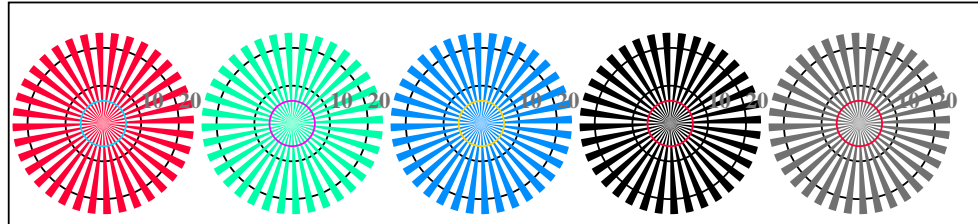
iscrizione TUB: 20190301-AI16/AI16L0FA.TXT /.PS
 Applicazione per la misura dell'output di display et output di stampa
 TUB materiale: code=rhata



AI161-1, Fig. D4Wde: 16 equidistante passi $W-R_e$; $W-G_e$; $W-B_e$; $W-N$; $rgb/cmy0 \rightarrow rgb_{de}$ setrgbcolor

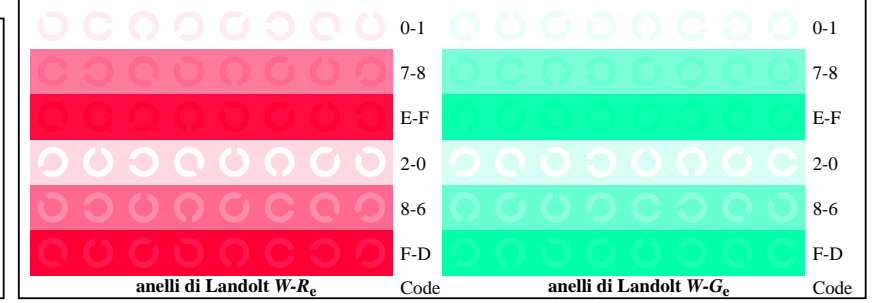


AI161-3, Fig. D5Wde: codice i Landolt anelli N ; R_e ; G_e ; B_e ; Z ; PS operator: $rgb \rightarrow rgb_{de}$ setrgbcolor

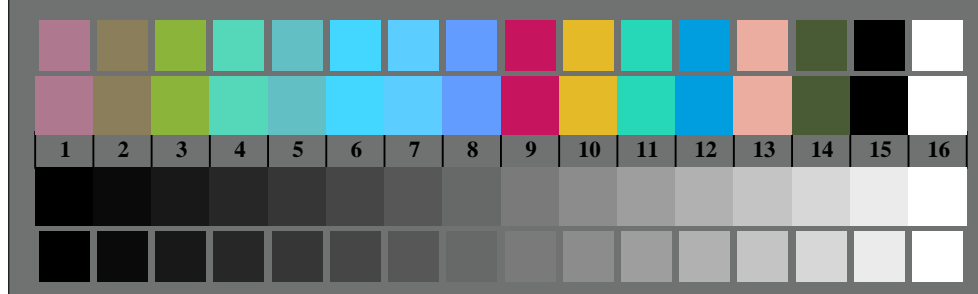


reticoli radiali $W-R_e$ reticoli radiali $W-G_e$ reticoli radiali $W-B_e$ reticoli radiali $W-N$ reticoli radiali $W-Z$

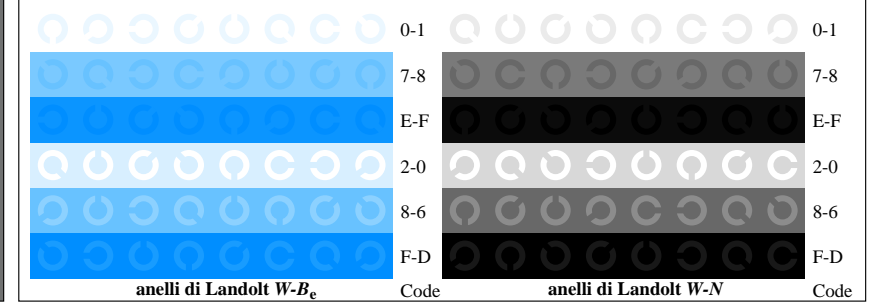
AI160-5, Fig. D2Wde: reticoli radiali $W-R_e$; $W-G_e$; $W-B_e$; $W-N$; PS operator: $rgb \rightarrow rgb_{de}$ setrgbcolor



AI161-5, Fig. D6Wde: anelli di Landolt $W-R_e$; $W-G_e$; PS operator: $rgb \rightarrow rgb_{de}$ setrgbcolor



AI160-7, Fig. D3Wde: 14 prova colori CIE i 2 + 16 grigio passi (sf); $rgb/cmy0 \rightarrow rgb_{de}$ setrgbcolor



AI161-7, Fig. D7Wde: anelli di Landolt $W-B_e$; $W-N$; PS operator: $rgb \rightarrow rgb_{de}$ setrgbcolor



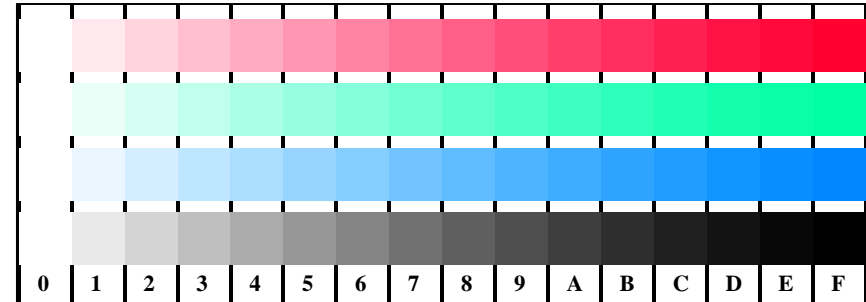
Grafico AI16 conformemente a grafico 4 a ISO/IEC 15775
 Tavola dei colori cromatici RGB

Input: $rgb/cmy0/000n/w$ set...
 Output: $\rightarrow rgb_{de}$ setrgbcolor

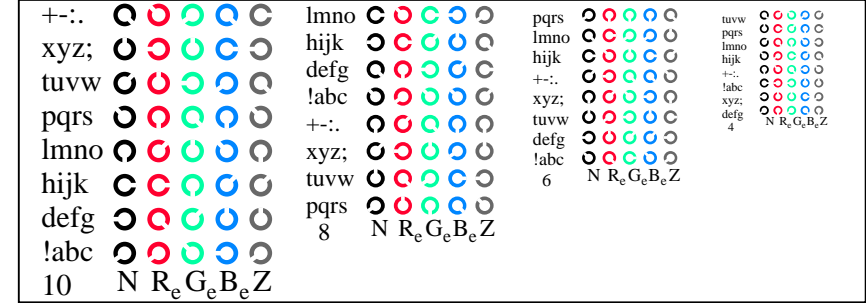


vedevi file simili: <http://farbe.li.tu-berlin.de/AI16/AI16.HTM>
 Informazioni tecniche: <http://farbe.li.tu-berlin.de/> o <http://farbe.li.tu-berlin.de/AE.HTM>

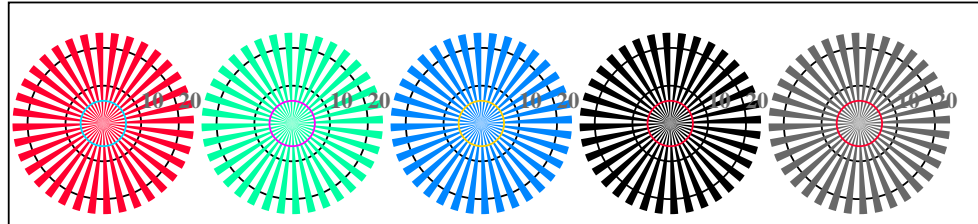
iscrizione TUB: 20190301-AI16/AI16L0FA.TXT /.PS
 Applicazione per la misura dell'output di display et output di stampa
 TUB materiale: code=rhata



AI161-1, Fig. D4Wde: 16 equidistante passi $W-R_e$; $W-G_e$; $W-B_e$; $W-N$; $rgb/cmy0 \rightarrow rgb_{de}$ setrgbcolor

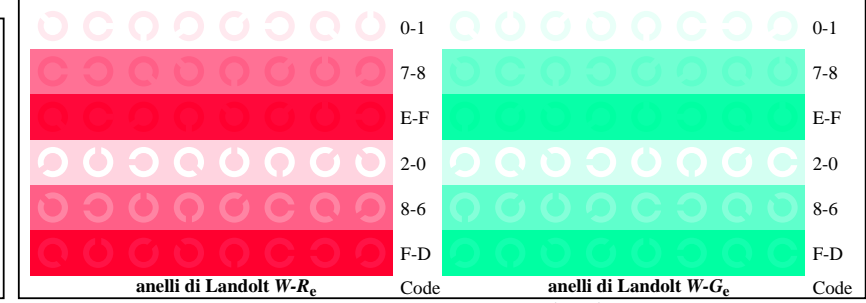


AI161-3, Fig. D5Wde: codice i Landolt anelli N ; R_e ; G_e ; B_e ; Z ; PS operator: $rgb \rightarrow rgb_{de}$ setrgbcolor

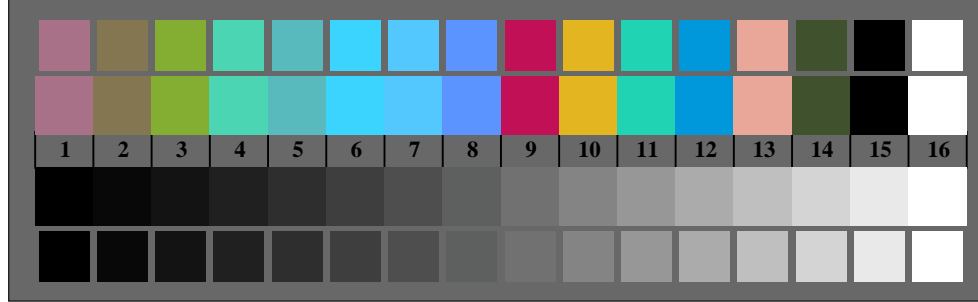


reticoli radiali $W-R_e$ reticoli radiali $W-G_e$ reticoli radiali $W-B_e$ reticoli radiali $W-N$ reticoli radiali $W-Z$

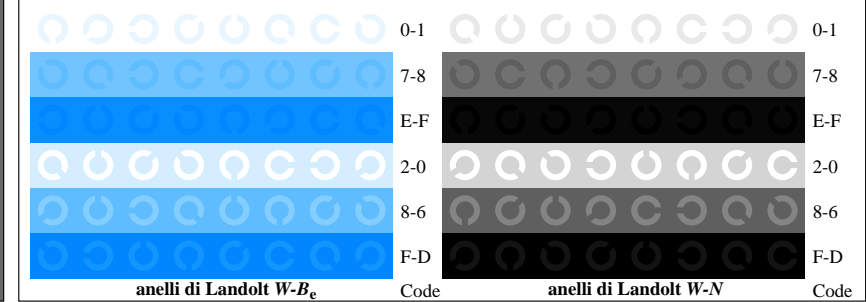
AI160-5, Fig. D2Wde: reticoli radiali $W-R_e$; $W-G_e$; $W-B_e$; $W-N$; PS operator: $rgb \rightarrow rgb_{de}$ setrgbcolor



AI161-5, Fig. D6Wde: anelli di Landolt $W-R_e$; $W-G_e$; PS operator: $rgb \rightarrow rgb_{de}$ setrgbcolor



AI160-7, Fig. D3Wde: 14 prova colori CIE i 2 + 16 grigio passi (sf); $rgb/cmy0 \rightarrow rgb_{de}$ setrgbcolor



AI161-7, Fig. D7Wde: anelli di Landolt $W-B_e$; $W-N$; PS operator: $rgb \rightarrow rgb_{de}$ setrgbcolor



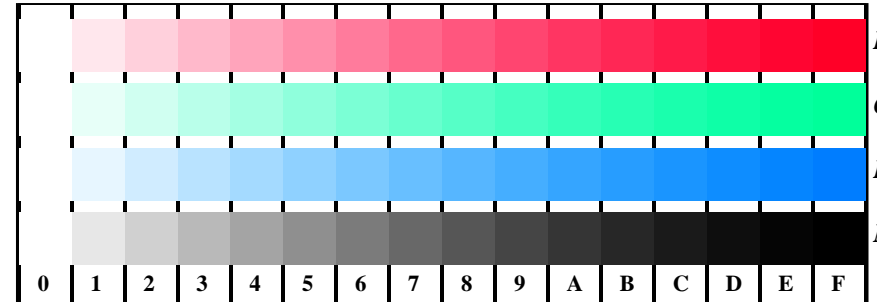
Grafico AI16 conformemente a grafico 4 a ISO/IEC 15775
 Tavola dei colori cromatici RGB

Input: $rgb/cmy0/000n/w$ set...
 Output: $\rightarrow rgb_{de}$ setrgbcolor

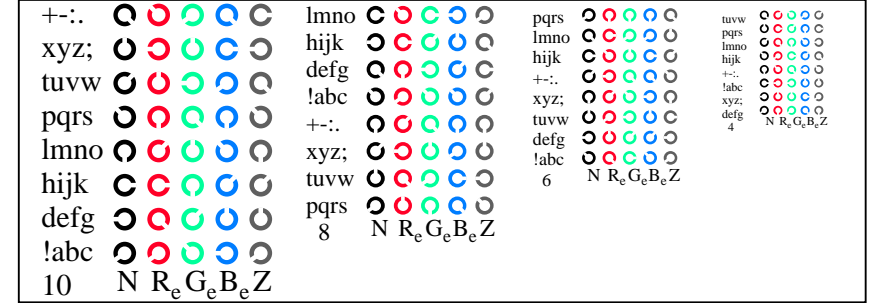


vedidi file simili: <http://farbe.li.tu-berlin.de/AI16/AI16.HTM>
 Informazioni tecniche: <http://farbe.li.tu-berlin.de/> o <http://farbe.li.tu-berlin.de/AE.HTM>

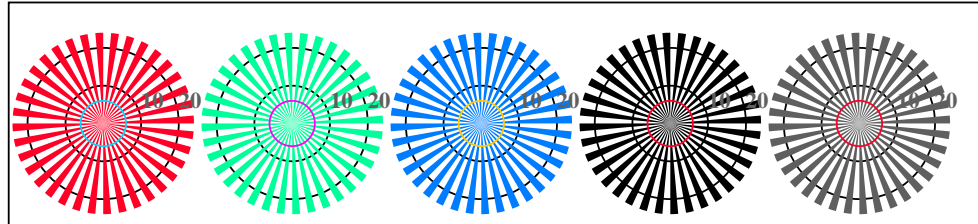
iscrizione TUB: 20190301-AI16/AI16L0FA.TXT /.PS
 Applicazione per la misura dell'output di display et output di stampa
 TUB materiale: code=rh4ta



AI161-1, Fig. D4Wde: 16 equidistante passi $W-R_e$; $W-G_e$; $W-B_e$; $W-N$; $rgb/cmy0 \rightarrow rgb_{de}$ setrgbcolor

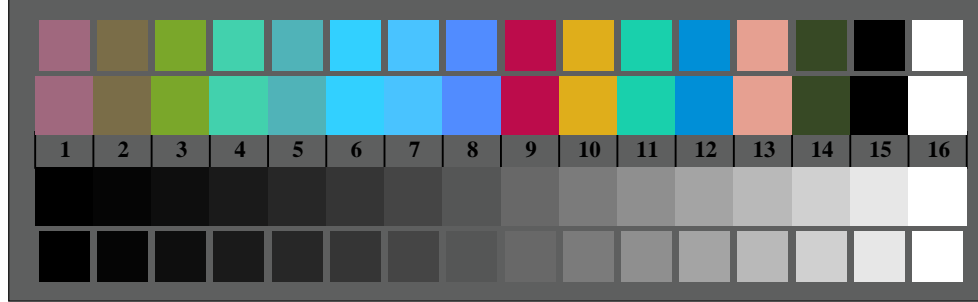


AI161-3, Fig. D5Wde: codice i Landolt anelli N ; R_e ; G_e ; B_e ; Z ; PS operator: $rgb \rightarrow rgb_{de}$ setrgbcolor

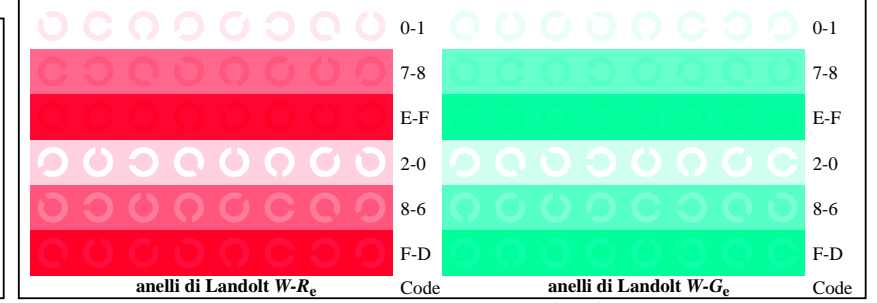


reticoli radiali $W-R_e$ reticoli radiali $W-G_e$ reticoli radiali $W-B_e$ reticoli radiali $W-N$ reticoli radiali $W-Z$

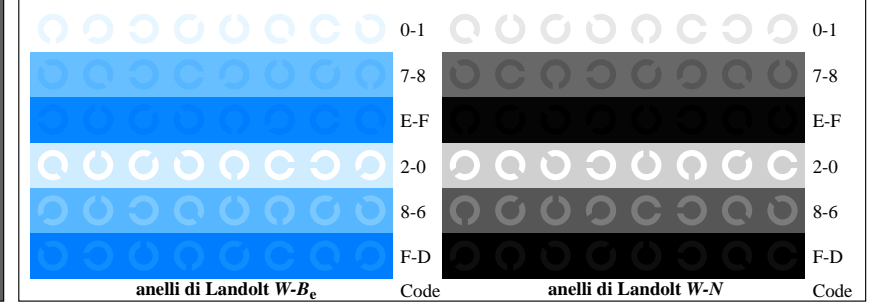
AI160-5, Fig. D2Wde: reticoli radiali $W-R_e$; $W-G_e$; $W-B_e$; $W-N$; PS operator: $rgb \rightarrow rgb_{de}$ setrgbcolor



AI160-7, Fig. D3Wde: 14 prova colori CIE i 2 + 16 grigio passi (sf); $rgb/cmy0 \rightarrow rgb_{de}$ setrgbcolor



AI161-5, Fig. D6Wde: anelli di Landolt $W-R_e$; $W-G_e$; PS operator: $rgb \rightarrow rgb_{de}$ setrgbcolor



AI161-7, Fig. D7Wde: anelli di Landolt $W-B_e$; $W-N$; PS operator: $rgb \rightarrow rgb_{de}$ setrgbcolor



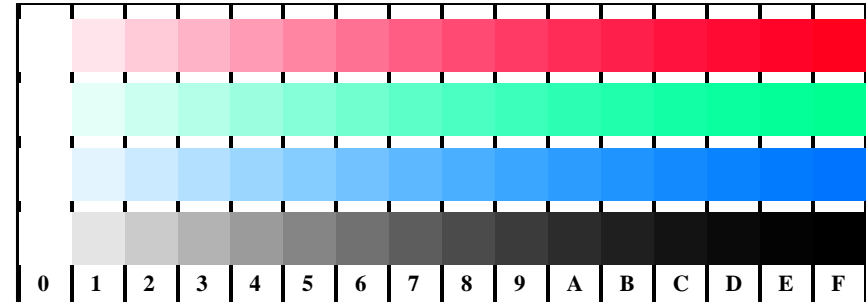
Grafico AI16 conformemente a grafico 4 a ISO/IEC 15775
 Tavola dei colori cromatici RGB

Input: $rgb/cmy0/000n/w$ set...
 Output: $\rightarrow rgb_{de}$ setrgbcolor

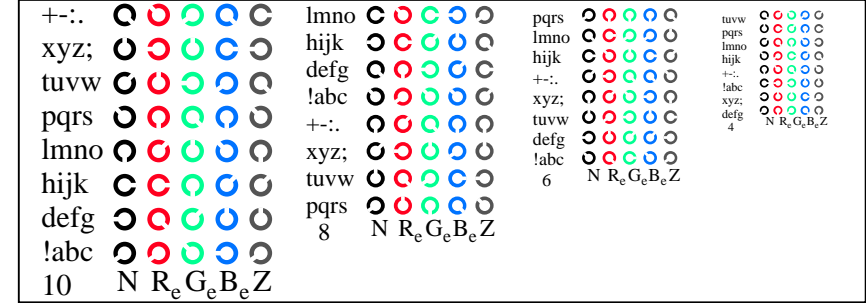


vedevi file simili: <http://farbe.li.tu-berlin.de/AI16/AI16.HTM>
 informazioni tecniche: <http://farbe.li.tu-berlin.de/> o <http://farbe.li.tu-berlin.de/AE.HTM>

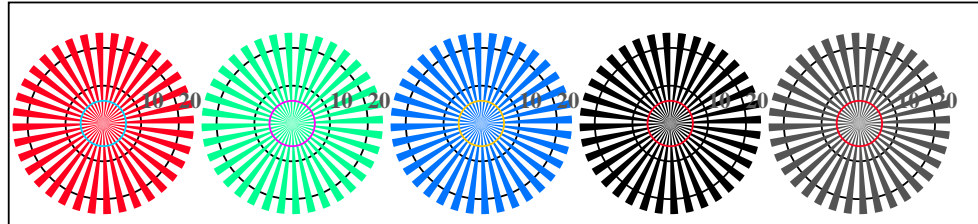
iscrizione TUB: 20190301-AI16/AI16L0FA.TXT /.PS
 Applicazione per la misura dell'output di display et output di stampa
 TUB materiale: code=rhata



AI161-1, Fig. D4Wde: 16 equidistante passi $W-R_e$; $W-G_e$; $W-B_e$; $W-N$; $rgb/cmy0 \rightarrow rgb_{de}$ setrgbcolor

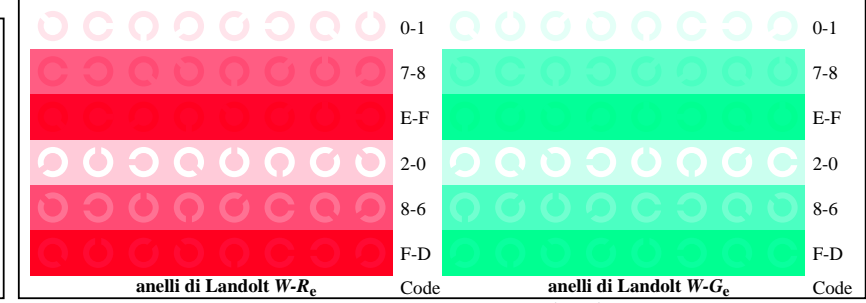


AI161-3, Fig. D5Wde: codice i Landolt anelli N ; R_e ; G_e ; B_e ; Z ; PS operator: $rgb \rightarrow rgb_{de}$ setrgbcolor

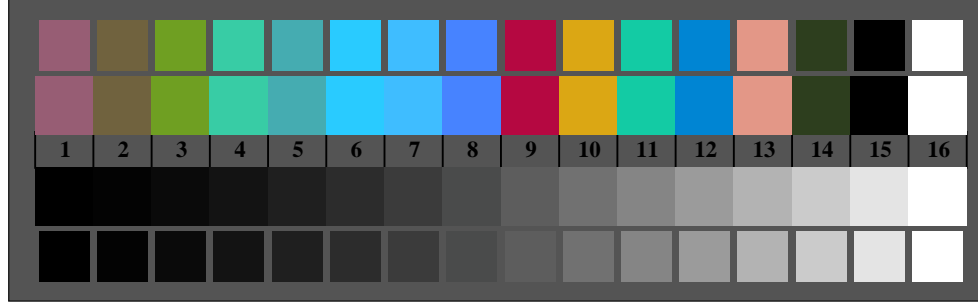


reticoli radiali $W-R_e$ reticoli radiali $W-G_e$ reticoli radiali $W-B_e$ reticoli radiali $W-N$ reticoli radiali $W-Z$

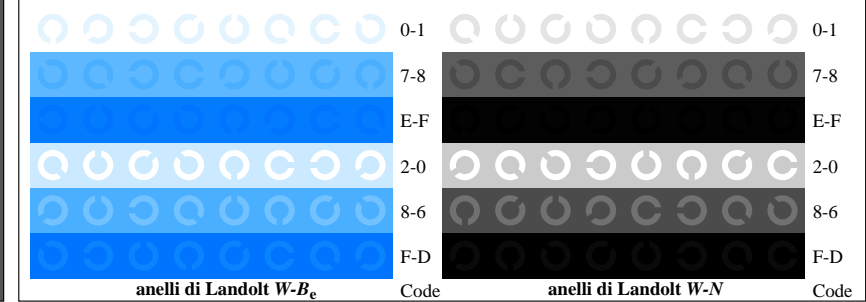
AI160-5, Fig. D2Wde: reticoli radiali $W-R_e$; $W-G_e$; $W-B_e$; $W-N$; PS operator: $rgb \rightarrow rgb_{de}$ setrgbcolor



AI161-5, Fig. D6Wde: anelli di Landolt $W-R_e$; $W-G_e$; PS operator: $rgb \rightarrow rgb_{de}$ setrgbcolor



AI160-7, Fig. D3Wde: 14 prova colori CIE i 2 + 16 grigio passi (sf); $rgb/cmy0 \rightarrow rgb_{de}$ setrgbcolor



AI161-7, Fig. D7Wde: anelli di Landolt $W-B_e$; $W-N$; PS operator: $rgb \rightarrow rgb_{de}$ setrgbcolor



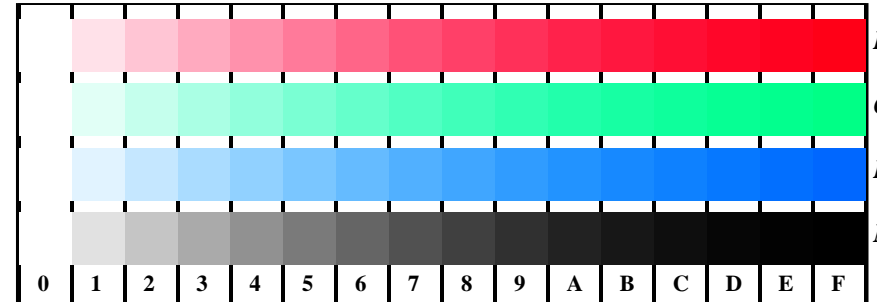
Grafico AI16 conformemente a grafico 4 a ISO/IEC 15775
 Tavola dei colori cromatici RGB

Input: $rgb/cmy0/000n/w$ set...
 Output: $\rightarrow rgb_{de}$ setrgbcolor

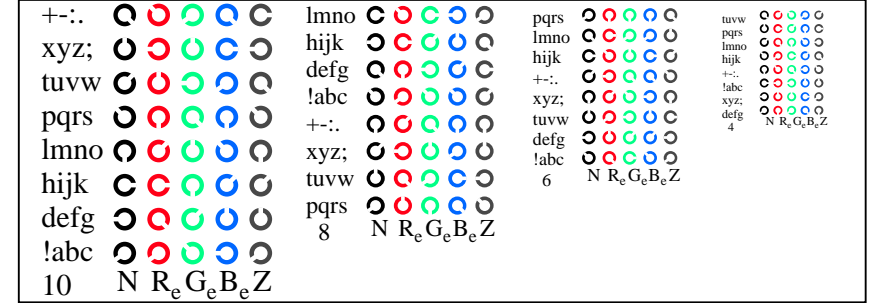


vedevi file simili: <http://farbe.li.tu-berlin.de/AI16/AI16.HTM>
 Informazioni tecniche: <http://farbe.li.tu-berlin.de/> o <http://farbe.li.tu-berlin.de/AE.HTM>

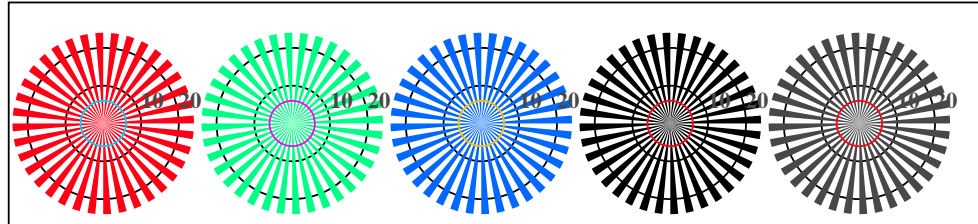
iscrizione TUB: 20190301-AI16/AI16L0FA.TXT /.PS
 Applicazione per la misura dell'output di display et output di stampa
 TUB materiale: code=rhata



AI161-1, Fig. D4Wde: 16 equidistante passi $W-R_e$; $W-G_e$; $W-B_e$; $W-N$; $rgb/cmy0 \rightarrow rgb_{de}$ setrgbcolor

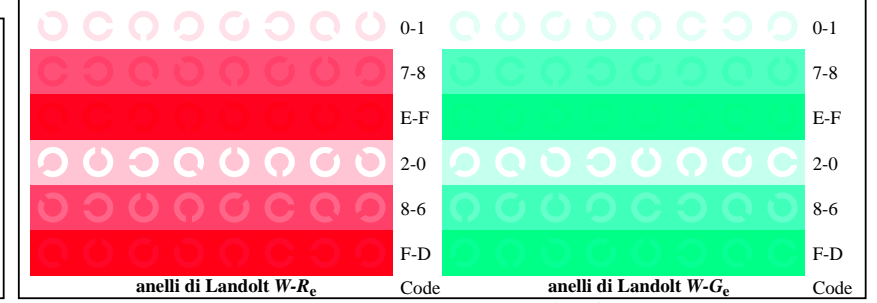


AI161-3, Fig. D5Wde: codice i Landolt anelli N ; R_e ; G_e ; B_e ; Z ; PS operator: $rgb \rightarrow rgb_{de}$ setrgbcolor

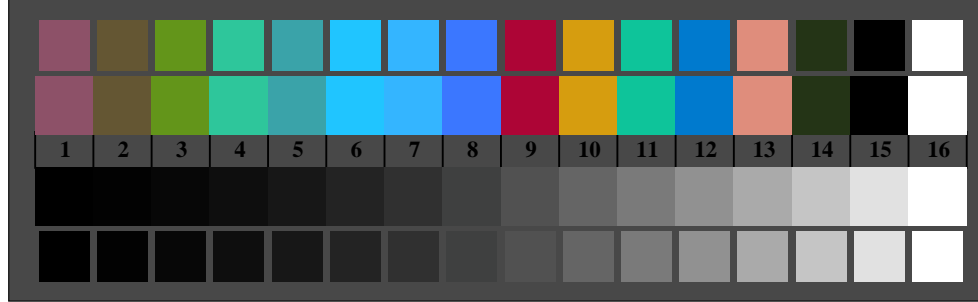


reticoli radiali $W-R_e$ reticoli radiali $W-G_e$ reticoli radiali $W-B_e$ reticoli radiali $W-N$ reticoli radiali $W-Z$

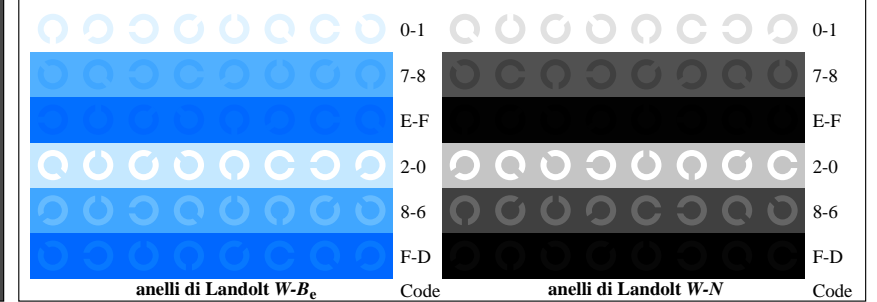
AI160-5, Fig. D2Wde: reticoli radiali $W-R_e$; $W-G_e$; $W-B_e$; $W-N$; PS operator: $rgb \rightarrow rgb_{de}$ setrgbcolor



AI161-5, Fig. D6Wde: anelli di Landolt $W-R_e$; $W-G_e$; PS operator: $rgb \rightarrow rgb_{de}$ setrgbcolor



AI160-7, Fig. D3Wde: 14 prova colori CIE i 2 + 16 grigio passi (sf); $rgb/cmy0 \rightarrow rgb_{de}$ setrgbcolor



AI161-7, Fig. D7Wde: anelli di Landolt $W-B_e$; $W-N$; PS operator: $rgb \rightarrow rgb_{de}$ setrgbcolor



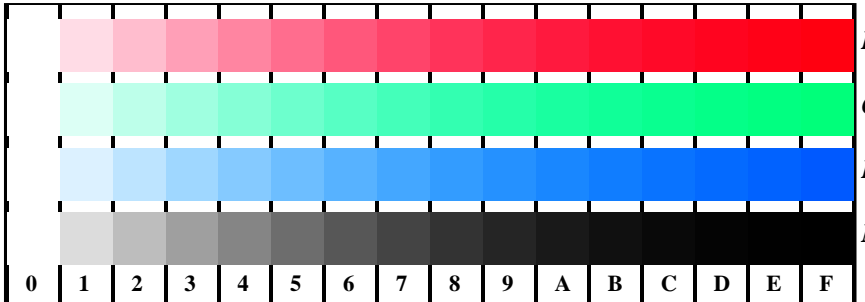
Grafico AI16 conformemente a grafico 4 a ISO/IEC 15775
 Tavola dei colori cromatici RGB

Input: $rgb/cmy0/000n/w$ set...
 Output: $\rightarrow rgb_{de}$ setrgbcolor

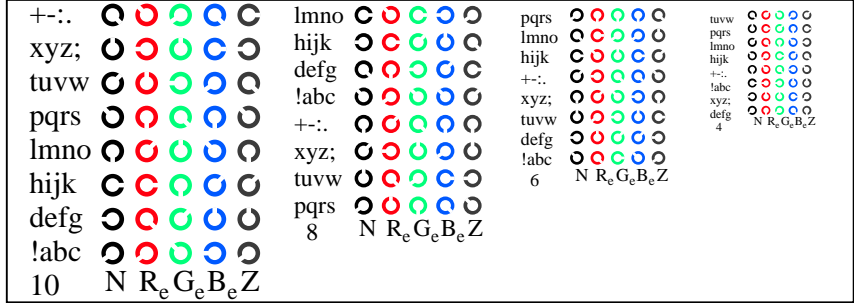


vedevi file simili: <http://farbe.li.tu-berlin.de/AI16/AI16.HTM>
 informazioni tecniche: <http://farbe.li.tu-berlin.de/> o <http://farbe.li.tu-berlin.de/AE.HTM>

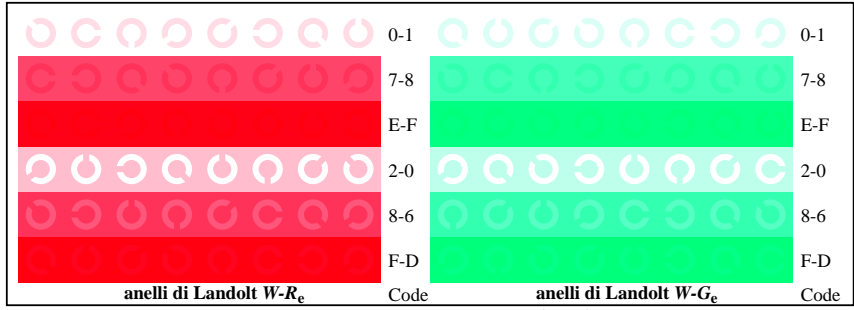
iscrizione TUB: 20190301-AI16/AI16L0FA.TXT /.PS
 Applicazione per la misura dell'output di display et output di stampa
 TUB materiale: code=rhata



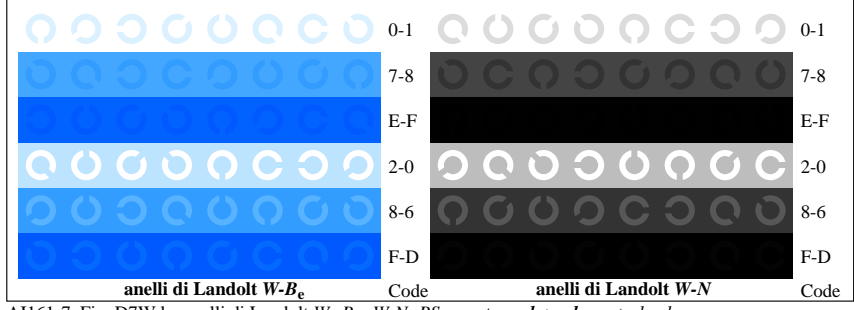
AI161-1, Fig. D4Wde: 16 equidistante passi $W-R_e$; $W-G_e$; $W-B_e$; $W-N$; $rgb/cmy0 \rightarrow rgb_{de}$ setrgbcolor



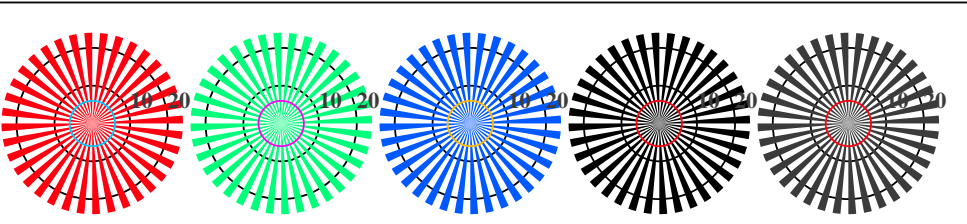
AI161-3, Fig. D5Wde: codice i Landolt anelli N ; R_e ; G_e ; B_e ; Z ; PS operator: $rgb \rightarrow rgb_{de}$ setrgbcolor



AI161-5, Fig. D6Wde: anelli di Landolt $W-R_e$; $W-G_e$; PS operator: $rgb \rightarrow rgb_{de}$ setrgbcolor

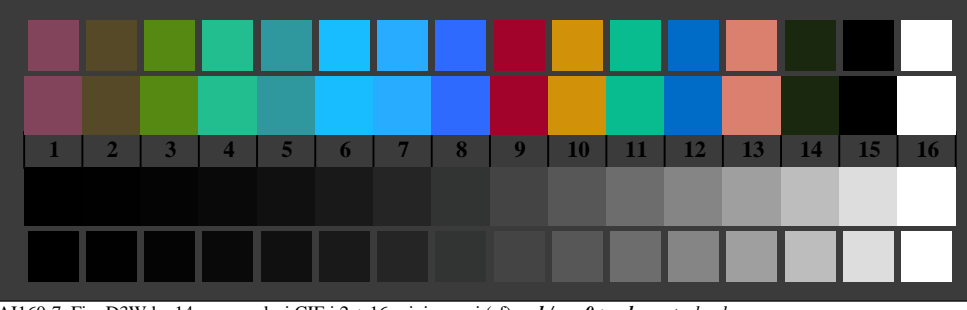


AI161-7, Fig. D7Wde: anelli di Landolt $W-B_e$; $W-N$; PS operator: $rgb \rightarrow rgb_{de}$ setrgbcolor



reticoli radiali $W-R_e$ reticoli radiali $W-G_e$ reticoli radiali $W-B_e$ reticoli radiali $W-N$ reticoli radiali $W-Z$

AI160-5, Fig. D2Wde: reticoli radiali $W-R_e$; $W-G_e$; $W-B_e$; $W-N$; PS operator: $rgb \rightarrow rgb_{de}$ setrgbcolor



AI160-7, Fig. D3Wde: 14 prova colori CIE i 2 + 16 grigio passi (sf); $rgb/cmy0 \rightarrow rgb_{de}$ setrgbcolor

Grafico AI16 conformemente a grafico 4 a ISO/IEC 15775
 Tavola dei colori cromatici RGB

Input: $rgb/cmy0/000n/w$ set...
 Output: $\rightarrow rgb_{de}$ setrgbcolor