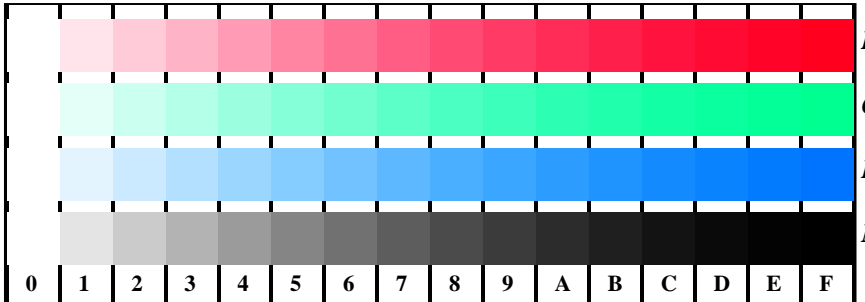
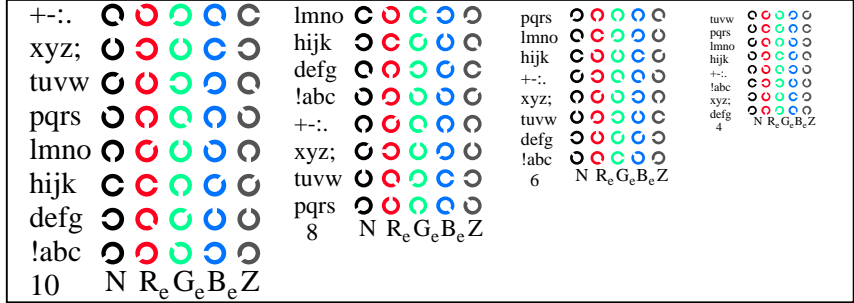


vedevi file simili: <http://farbe.li.tu-berlin.de/AI16/AI16.HTM>  
 Informazioni tecniche: <http://farbe.li.tu-berlin.de/> o <http://farbe.li.tu-berlin.de/AE.HTM>

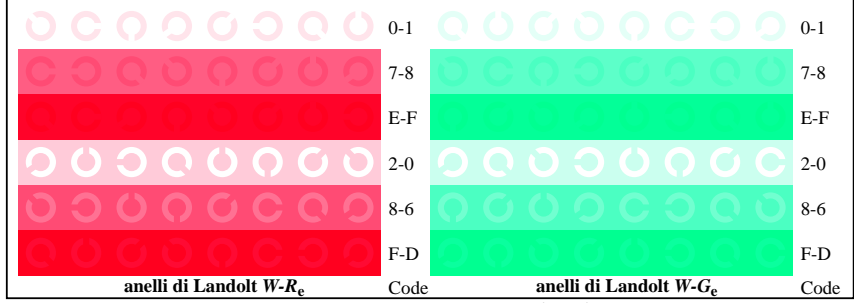
iscrizione TUB: 20190301-AI16/AI16L0FA.TXT /.PS  
 Applicazione per la misura dell'output di display et output di stampa  
 TUB materiale: code=rhata



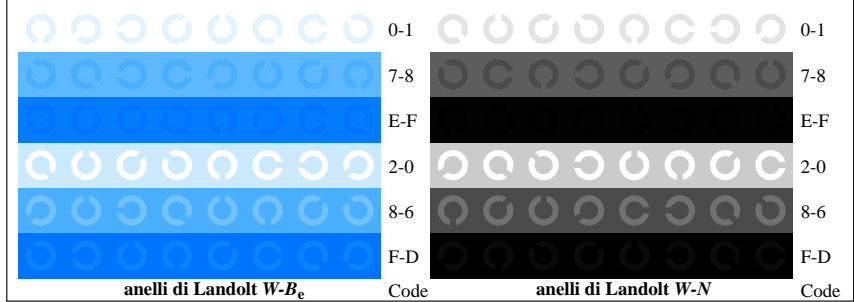
AI161-1, Fig. D4Wde: 16 equidistante passi  $W-R_e$ ;  $W-G_e$ ;  $W-B_e$ ;  $W-N$ ;  $rgb/cmy0 \rightarrow rgb_{de}$  setrgbcolor



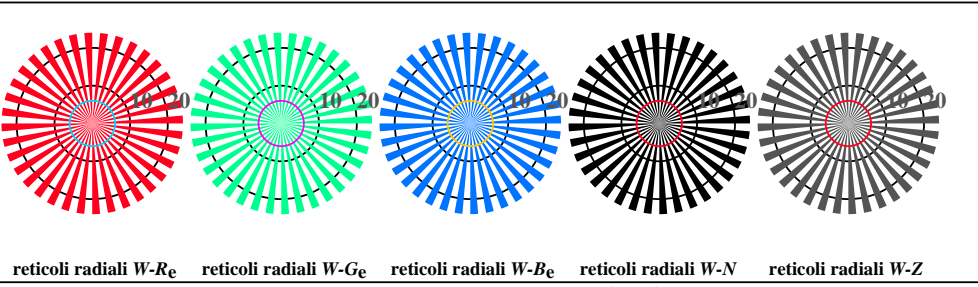
AI161-3, Fig. D5Wde: codice i Landolt anelli N; R<sub>e</sub>; G<sub>e</sub>; B<sub>e</sub>; Z; PS operator:  $rgb \rightarrow rgb_{de}$  setrgbcolor



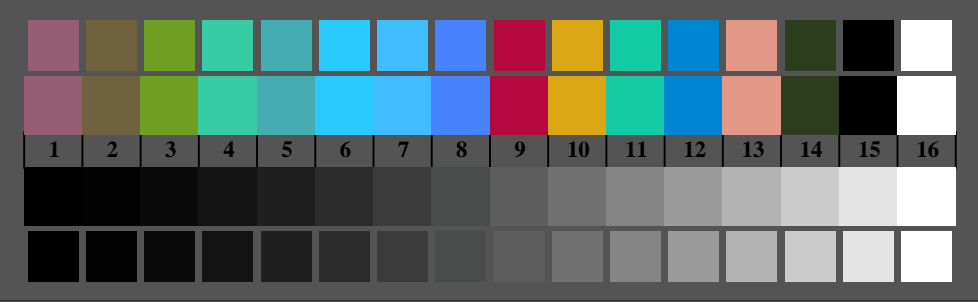
AI161-5, Fig. D6Wde: anelli di Landolt  $W-B_e$ ;  $W-G_e$ ; PS operator:  $rgb \rightarrow rgb_{de}$  setrgbcolor



AI161-7, Fig. D7Wde: anelli di Landolt  $W-B_e$ ;  $W-N$ ; PS operator:  $rgb \rightarrow rgb_{de}$  setrgbcolor



AI160-5, Fig. D2Wde: reticoli radiali  $W-R_e$ ;  $W-G_e$ ;  $W-B_e$ ;  $W-N$ ; PS operator:  $rgb \rightarrow rgb_{de}$  setrgbcolor



AI160-7, Fig. D3Wde: 14 prova colori CIE i 2 + 16 grigio passi (sf);  $rgb/cmy0 \rightarrow rgb_{de}$  setrgbcolor

Grafico AI16 conformemente a grafico 4 a ISO/IEC 15775  
 Tavola dei colori cromatici RGB

Input:  $rgb/cmy0/000n/w$  set...  
 Output:  $\rightarrow rgb_{de}$  setrgbcolor