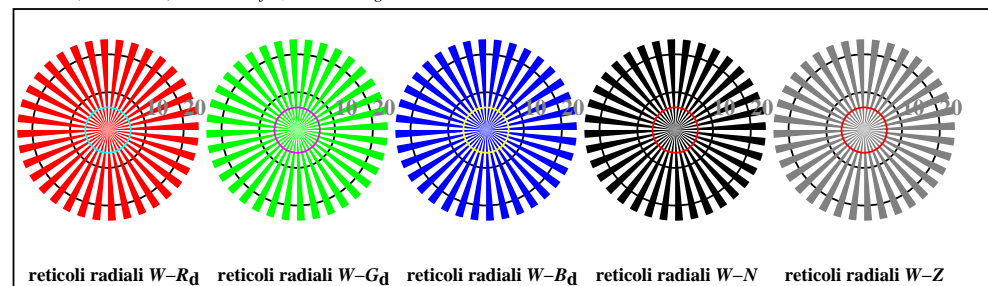




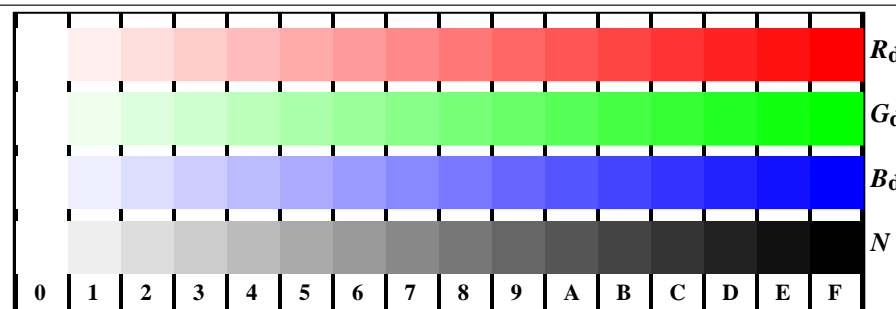
AI170-3, D1W*dd; ; PS settransfer, 3 colorimage



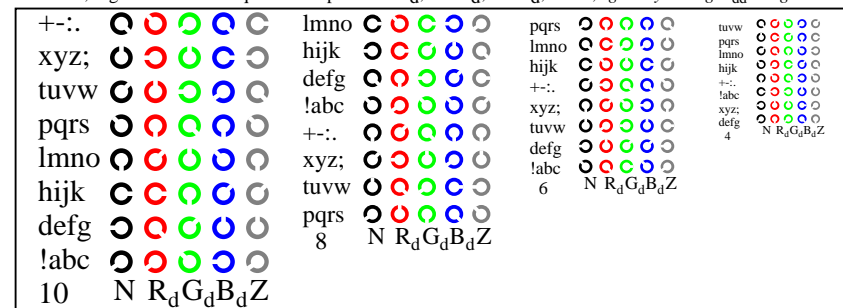
AI170-5, Fig. D2W*dd: reticoli radiali W-R_d; W-G_d; W-B_d; W-N; PS operator rgb->rgb*_{dd} setrgbcolor



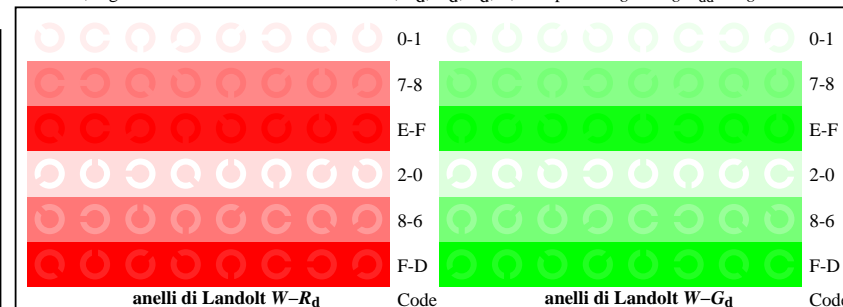
AI170-7, Fig. D3W*dd: 14 prova colori CIE i 2 + 16 grigio passi (sf); rgb/cmy0->rgb*_{dd} setrgbcolor



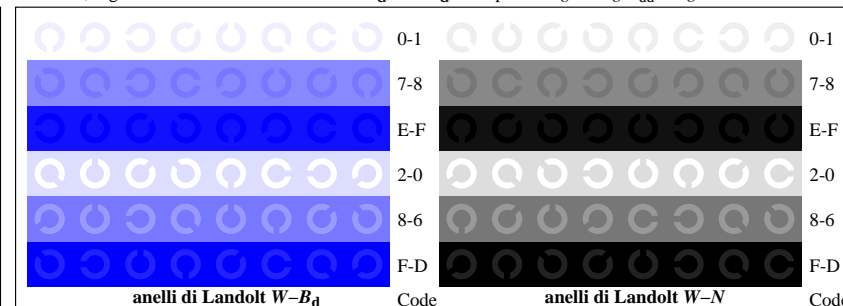
AI171-1, Fig. D4W*dd: 16 equidistante passi W-R_d; W-G_d; W-B_d; W-N; rgb/cmy0->rgb*_{dd} setrgbcolor



AI171-3, Fig. D5W*dd: codice i Landolt anelli N; R_d; G_d; B_d; Z; PS operator rgb->rgb*_{dd} setrgbcolor



AI171-5, Fig. D6W*dd: anelli di Landolt W-R_d; W-G_d; PS operator rgb->rgb*_{dd} setrgbcolor



AI171-7, Fig. D7W*dd: anelli di Landolt W-B_d; W-N; PS operator rgb->rgb*_{dd} setrgbcolor