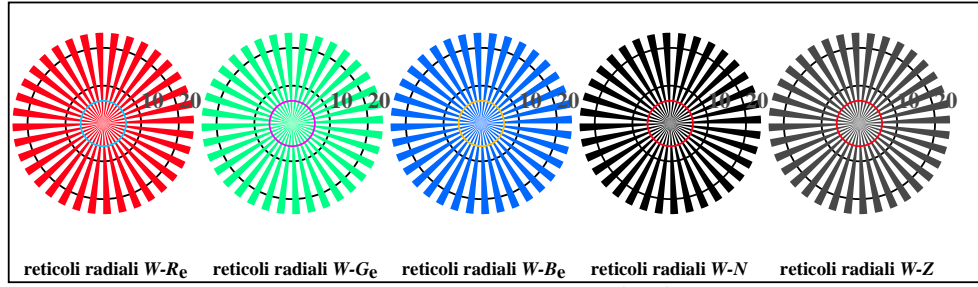


vedevi file simili: http://standards.iso.org/iso/9241/306/ed-2/AI17/AI17.HTM
 Informazioni tecniche: http://farbe.it.tu-berlin.de/ o http://farbe.it.tu-berlin.de/AE.HTM

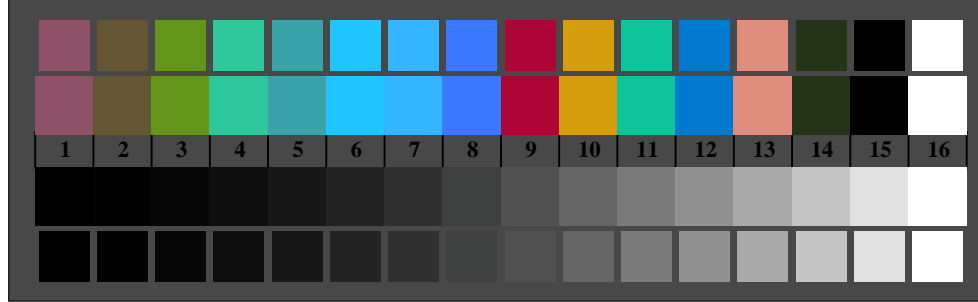
iscrizione TUB: 20190301-AI17/AI17L0FA.TXT /.PS
 Applicazione per la misura dell'output di display et output di stampa
 TUB materiale: code=rhata



AI170-3, Fig. D1Wde: Flower motif, 14 prova colori CIE e 2 + 16 grigio passi (sf); PS operator: *settransfer, 3 colorimage*



AI170-5, Fig. D2Wde: reticoli radiali W-Re; W-Ge; W-Be; W-N; PS operator: *rgb->rgb_{de} setrgbcolor*



AI170-7, Fig. D3Wde: 14 prova colori CIE i 2 + 16 grigio passi (sf); *rgb/cmy0->rgb_{de} setrgbcolor*

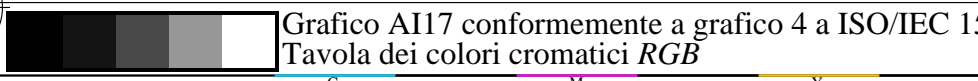
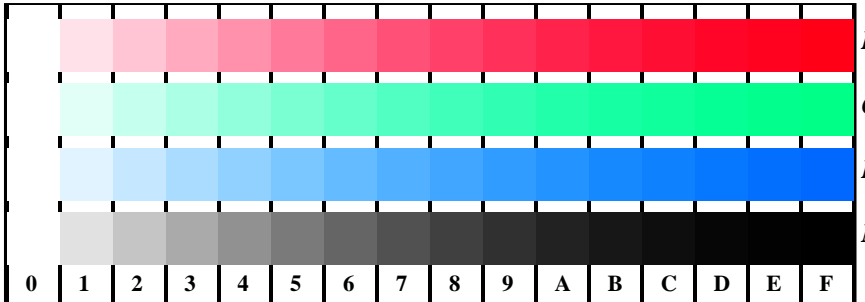
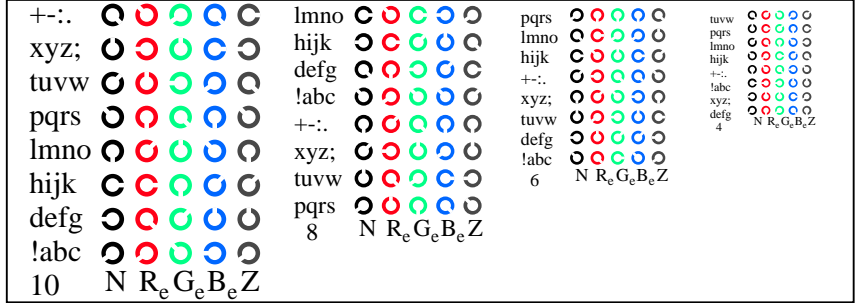


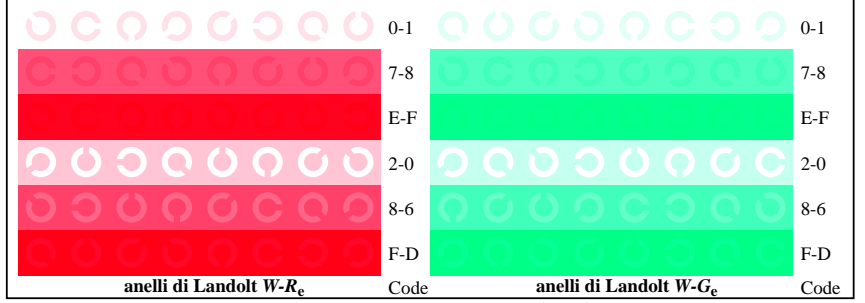
Grafico AI17 conformemente a grafico 4 a ISO/IEC 15775
 Tavola dei colori cromatici RGB



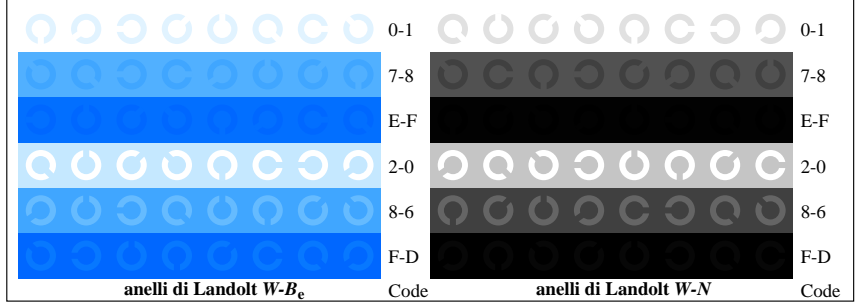
AI171-1, Fig. D4Wde: 16 equidistante passi W-Re; W-Ge; W-Be; W-N; *rgb/cmy0->rgb_{de} setrgbcolor*



AI171-3, Fig. D5Wde: codice i Landolt anelli N; R_e; G_e; B_e; Z; PS operator: *rgb->rgb_{de} setrgbcolor*



AI171-5, Fig. D6Wde: anelli di Landolt W-Re; W-Ge; PS operator: *rgb->rgb_{de} setrgbcolor*



AI171-7, Fig. D7Wde: anelli di Landolt W-Be; W-N; PS operator: *rgb->rgb_{de} setrgbcolor*

Input: *rgb/cmy0/000n/w set...*
 Output: *->rgb_{de} setrgbcolor*