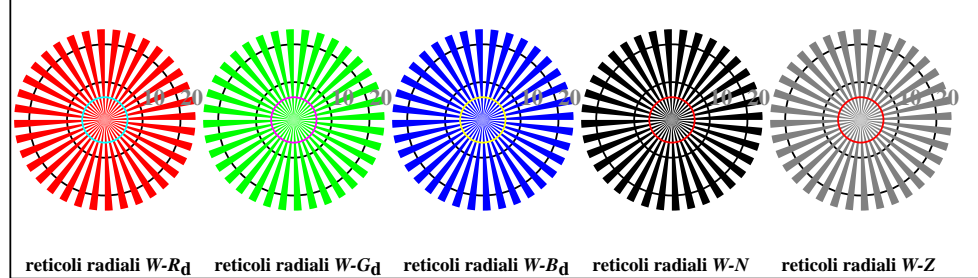


vedi file simili: <http://standards.iso.org/iso/9241/306/ed-2/AI17/AI17L1NA.TXT>
 informazioni tecniche: <http://farbe.li.tu-berlin.de/> o <http://farbe.li.tu-berlin.de/AE.HTM>

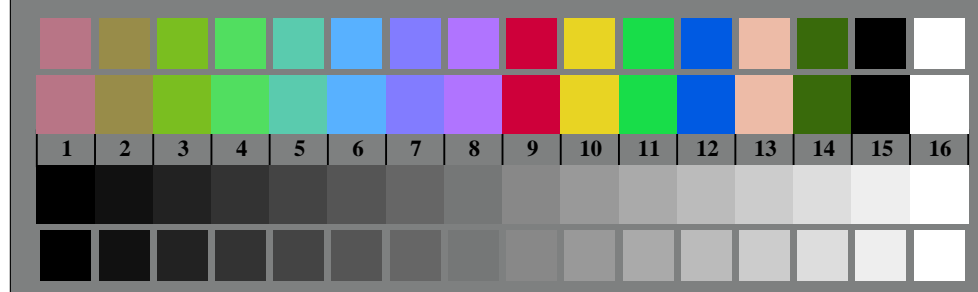
iscrizione TUB: 20190301-AI17/AI17L0NA.TXT /.PS
 Applicazione per la misura dell'output di display et output di stampa
 TUB materiale: code=rh4ta



AI170-3, Fig. D1Wdd: Flower motif, 14 prova colori CIE e 2 + 16 grigio passi (sf); PS operator: *settransfer, 3 colorimage*

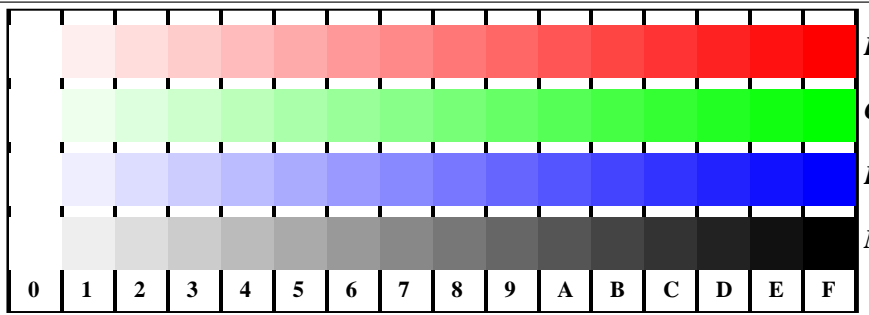


AI170-5, Fig. D2Wdd: reticoli radiali W-R_d; W-G_d; W-B_d; W-N; PS operator: *rgb->rgb_{dd} setrgbcolor*

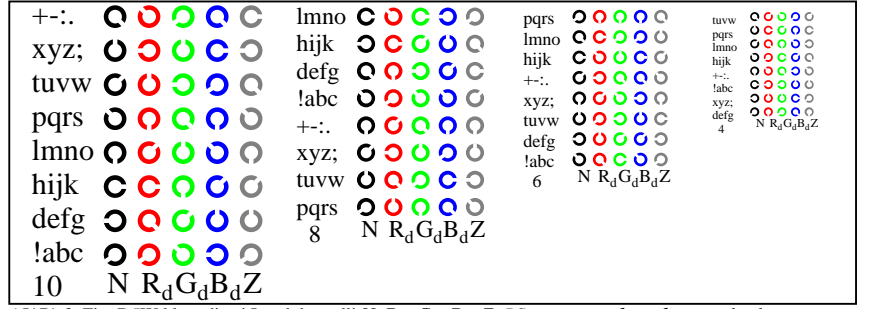


AI170-7, Fig. D3Wdd: 14 prova colori CIE i 2 + 16 grigio passi (sf); *rgb/cmy0->rgb_{dd} setrgbcolor*

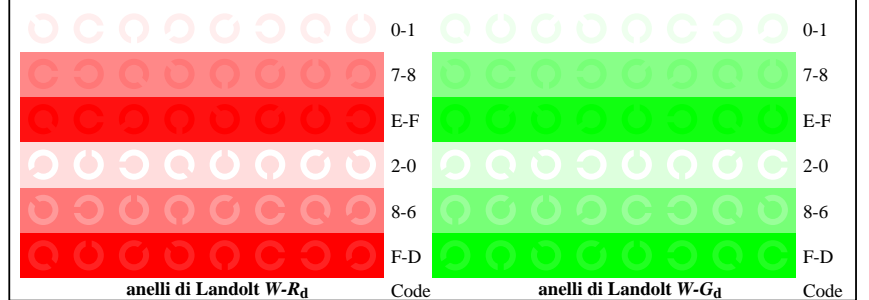
Grafico AI17 conformemente a grafico 4 a ISO/IEC 15775
 Tavola dei colori cromatici RGB



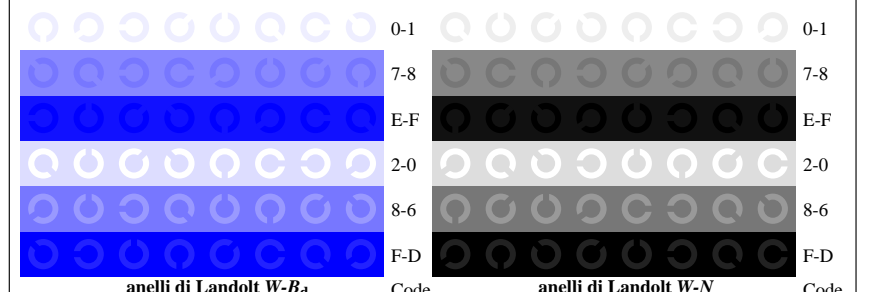
AI171-1, Fig. D4Wdd: 16 equidistante passi W-R_d; W-G_d; W-B_d; W-N; *rgb/cmy0->rgb_{dd} setrgbcolor*



AI171-3, Fig. D5Wdd: codice i Landolt anelli N; R_d; G_d; B_d; Z; PS operator: *rgb->rgb_{dd} setrgbcolor*



AI171-5, Fig. D6Wdd: anelli di Landolt W-R_d; W-G_d; PS operator: *rgb->rgb_{dd} setrgbcolor*



AI171-7, Fig. D7Wdd: anelli di Landolt W-B_d; W-N; PS operator: *rgb->rgb_{dd} setrgbcolor*

Input: *rgb/cmy0/000n/w set...*
 Output: *->rgb_{dd} setrgbcolor*

