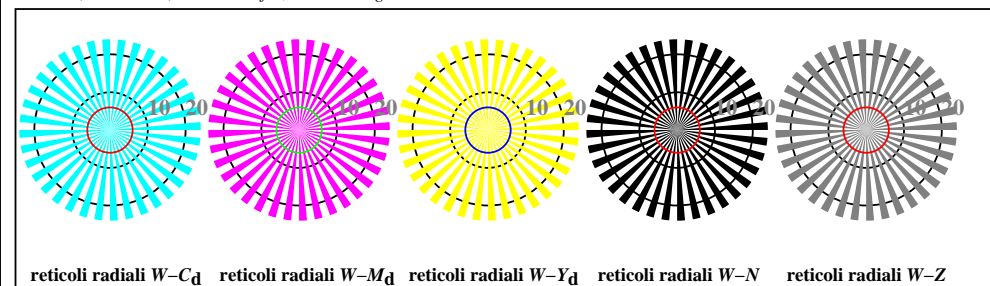




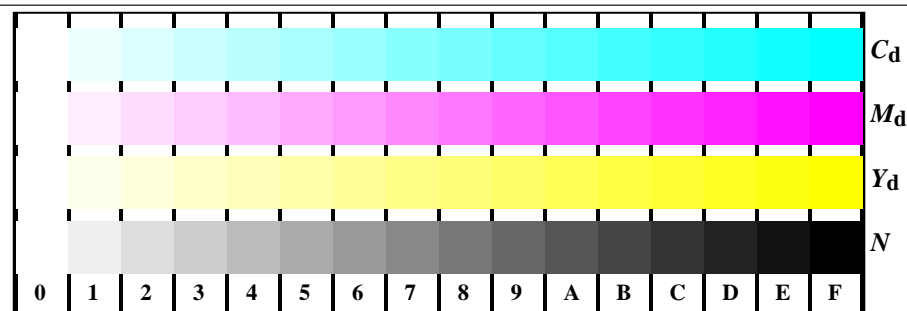
AI270-3, B1W*dd: ; PS settransfer, 3 colorimage



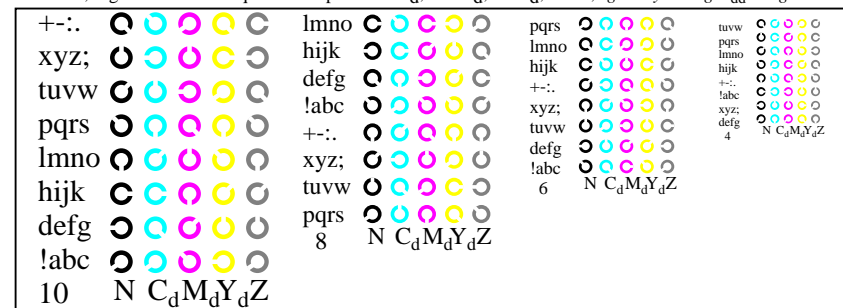
AI270-5, Fig. B2W*dd: reticoli radiali W-C_d: W-M_d: W-Y_d: W-N; PS operator rgb->rgb*_{dd} setrgbcolor



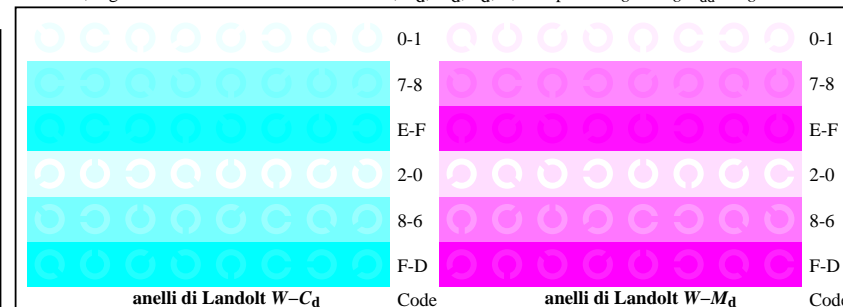
AI270-7, Fig. B3W*dd: 14 prova colori CIE i 2 + 16 grigio passi (sf); rgb/cmy0->rgb*_{dd} setrgbcolor



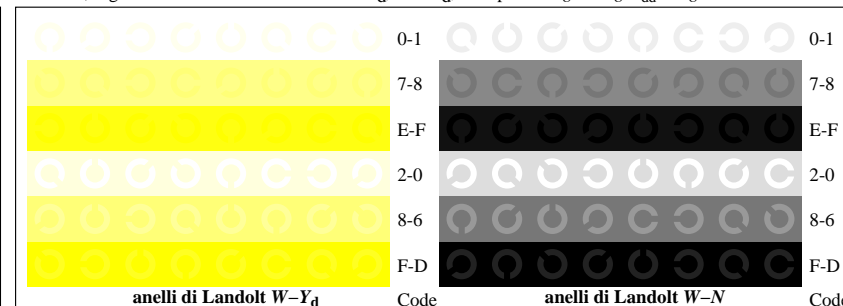
AI271-1, Fig. B4W*dd: 16 equidistante passi W-C_d: W-M_d: W-J_d: W-N; rgb/cmy0->rgb*_{dd} setrgbcolor



AI271-3, Fig. B5W*dd: codice i Landolt anelli N; C_d: M_d: Y_d: Z; PS operator rgb->rgb*_{dd} setrgbcolor



AI271-5, Fig. B6W*dd: anelli di Landolt W-C_d: W-M_d; PS operator rgb->rgb*_{dd} setrgbcolor



AI271-7, Fig. B7W*dd: anelli di Landolt W-Y_d: W-N; PS operator rgb->rgb*_{dd} setrgbcolor