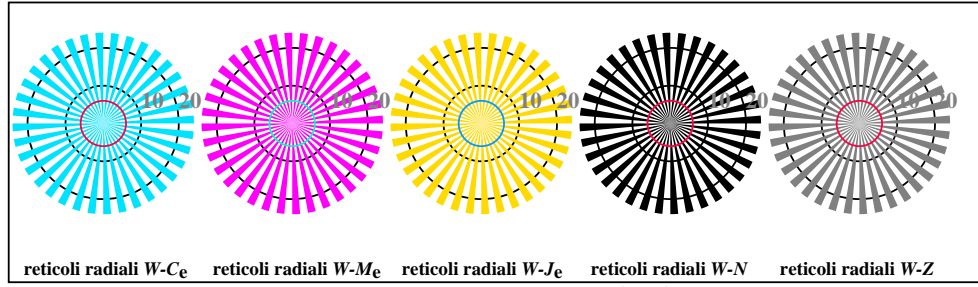


vedi file simili: <http://standards.iso.org/iso/9241/306/ed-2/AI27/AI27.HTM>
Informazioni tecniche: <http://farbe.it.tu-berlin.de/> o <http://farbe.it.tu-berlin.de/AE.HTM>

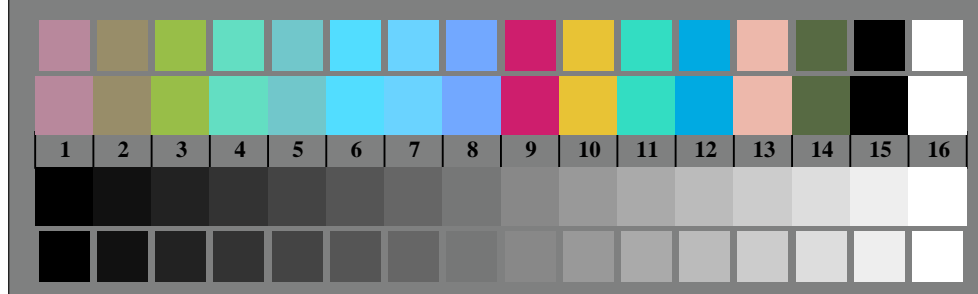
iscrizione TUB: 20190301-AI27/AI27L0FA.TXT /.PS
Applicazione per la misura dell'output di display et output di stampa
TUB materiale: code=rhata



AI270-3, Fig. B1Wde: Flower motif, 14 prova colori CIE e 2 + 16 grigio passi (nf); PS operator: *settransfer, 3 colorimage*



AI270-5, Fig. B2Wde: reticoli radiali W-Ce; W-Me; W-Je; W-N; PS operator: *rgb->rgbde setrgbcolor*



AI270-7, Fig. B3Wde: 14 prova colori CIE i 2 + 16 grigio passi (sf); *rgb/cmy0->rgbde setrgbcolor*

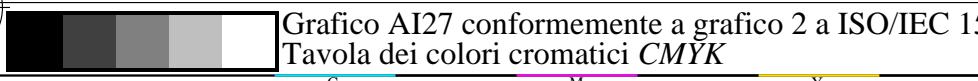
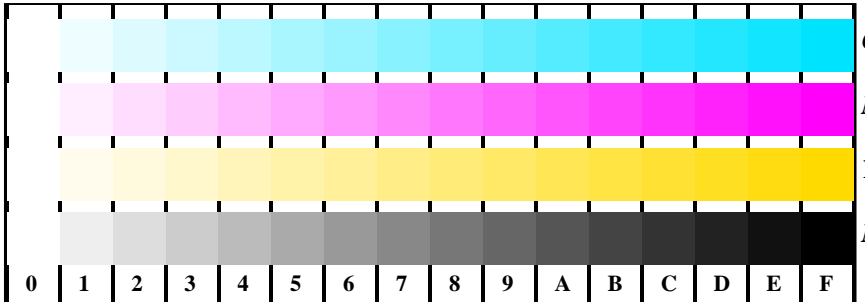
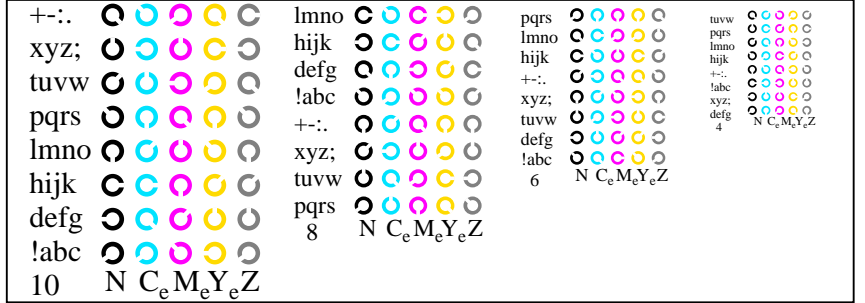


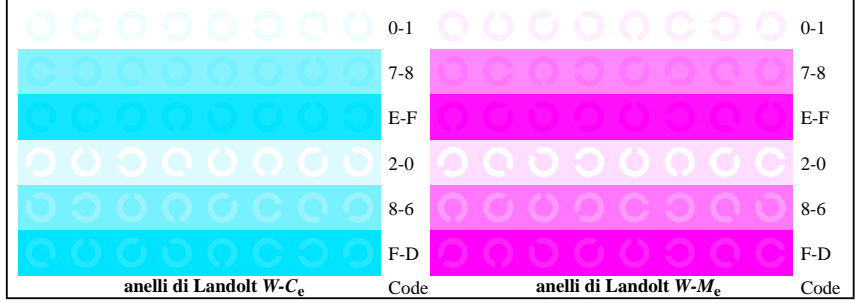
Grafico AI27 conformemente a grafico 2 a ISO/IEC 15775
Tavola dei colori cromatici CMYK



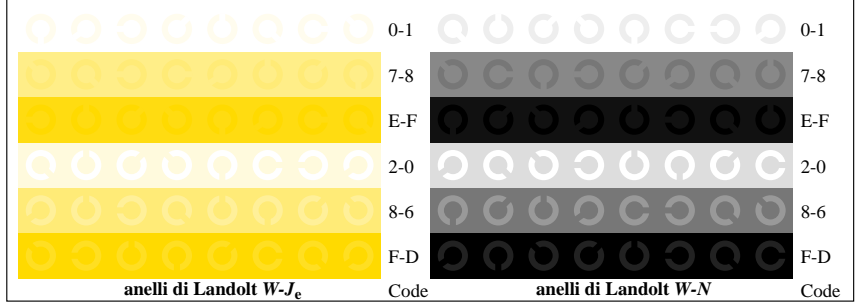
AI271-1, Fig. B4Wde: 16 equidistante passi W-Ce; W-Me; W-Je; W-N; *rgb/cmy0->rgbde setrgbcolor*



AI271-3, Fig. B5Wde: codice i Landolt anelli N; Ce; Me; Ye; Z; PS operator: *rgb->rgbde setrgbcolor*



AI271-5, Fig. B6Wde: anelli di Landolt W-Ce; W-Me; PS operator: *rgb->rgbde setrgbcolor*



AI271-7, Fig. B7Wde: anelli di Landolt W-Je; W-N; PS operator: *rgb->rgbde setrgbcolor*

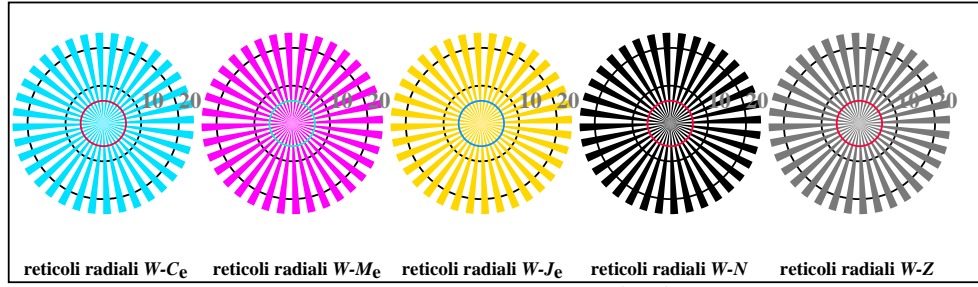
Input: *rgb/cmy0/000n/w set...*
Output: *->rgbde setrgbcolor*

vedi file simili: <http://standards.iso.org/iso/9241/306/ed-2/AI27/AI27.HTM>
Informazioni tecniche: <http://farbe.it.tu-berlin.de/> o <http://farbe.it.tu-berlin.de/AE.HTM>

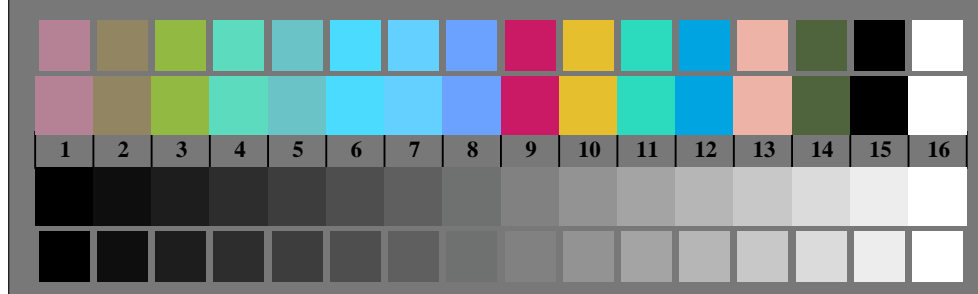
iscrizione TUB: 20190301-AI27/AI27L0FA.TXT /.PS
Applicazione per la misura dell'output di display et output di stampa
TUB materiale: code=rhata



AI270-3, Fig. B1Wde: Flower motif, 14 prova colori CIE e 2 + 16 grigio passi (nf); PS operator: *settransfer, 3 colorimage*



AI270-5, Fig. B2Wde: reticoli radiali W-Ce; W-Me; W-Je; W-N; PS operator: *rgb->rgbde setrgbcolor*



AI270-7, Fig. B3Wde: 14 prova colori CIE i 2 + 16 grigio passi (sf); *rgb/cmy0->rgbde setrgbcolor*

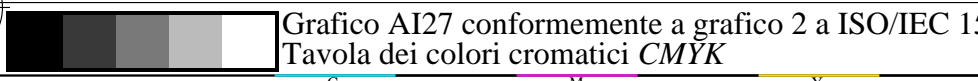
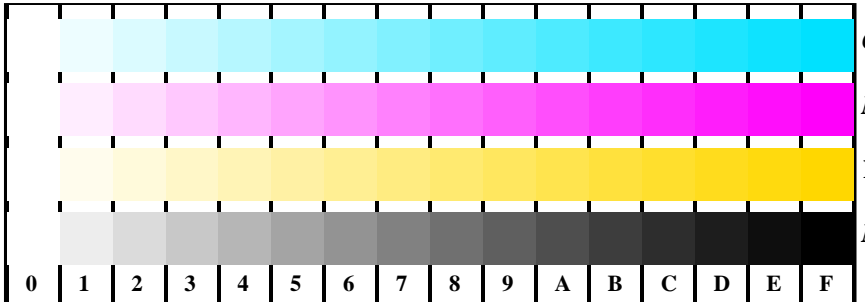
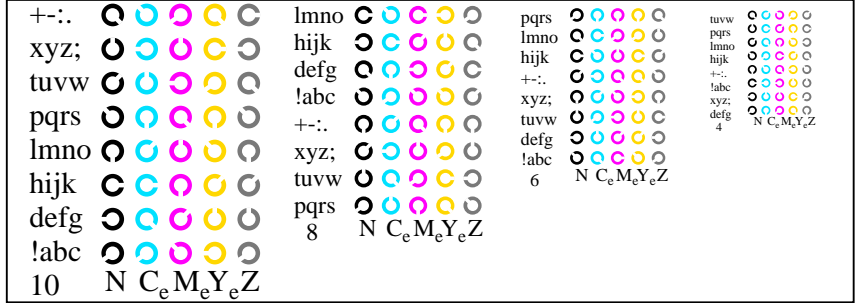


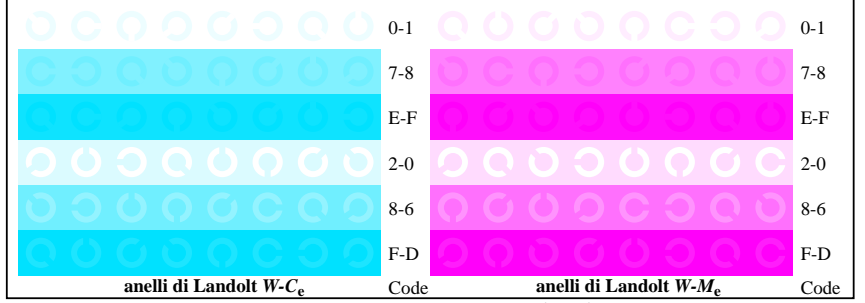
Grafico AI27 conformemente a grafico 2 a ISO/IEC 15775
Tavola dei colori cromatici CMYK



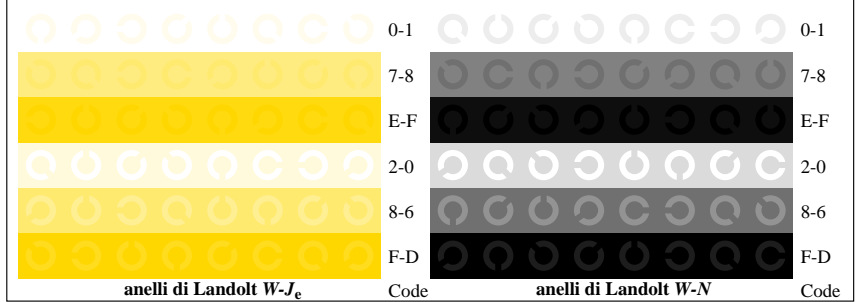
AI271-1, Fig. B4Wde: 16 equidistante passi W-Ce; W-Me; W-Je; W-N; *rgb/cmy0->rgbde setrgbcolor*



AI271-3, Fig. B5Wde: codice i Landolt anelli N; Ce; Me; Ye; Z; PS operator: *rgb->rgbde setrgbcolor*



AI271-5, Fig. B6Wde: anelli di Landolt W-Ce; W-Me; PS operator: *rgb->rgbde setrgbcolor*



AI271-7, Fig. B7Wde: anelli di Landolt W-Je; W-N; PS operator: *rgb->rgbde setrgbcolor*

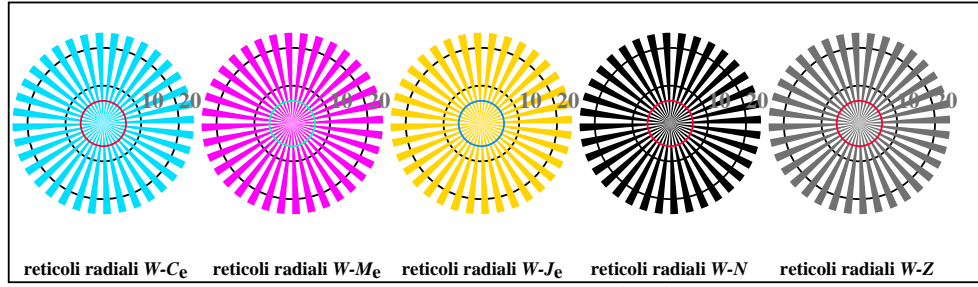
Input: *rgb/cmy0/000n/w set...*
Output: *->rgbde setrgbcolor*

vedi file simili: <http://standards.iso.org/iso/9241/306/ed-2/AI27/AI27.HTM>
Informazioni tecniche: <http://farbe.it.tu-berlin.de/> o <http://farbe.it.tu-berlin.de/AE.HTM>

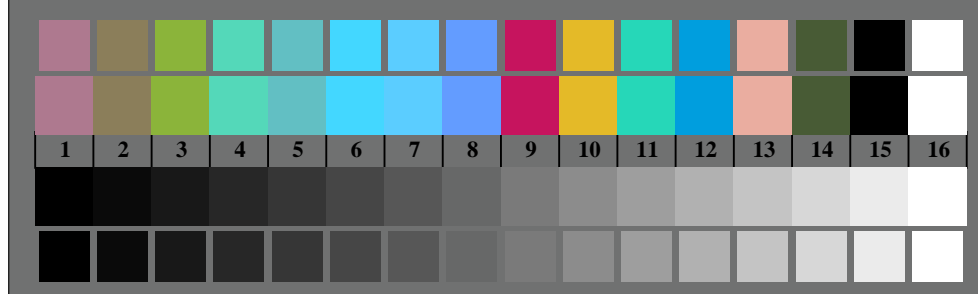
iscrizione TUB: 20190301-AI27/AI27L0FA.TXT /.PS
Applicazione per la misura dell'output di display et output di stampa
TUB materiale: code=rhata



AI270-3, Fig. B1Wde: Flower motif, 14 prova colori CIE e 2 + 16 grigio passi (nf); PS operator: *settransfer, 3 colorimage*



AI270-5, Fig. B2Wde: reticoli radiali W-Ce; W-Me; W-Je; W-N; PS operator: *rgb->rgb_{de} setrgbcolor*



AI270-7, Fig. B3Wde: 14 prova colori CIE i 2 + 16 grigio passi (sf); *rgb/cmy0->rgb_{de} setrgbcolor*

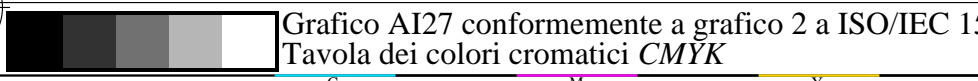
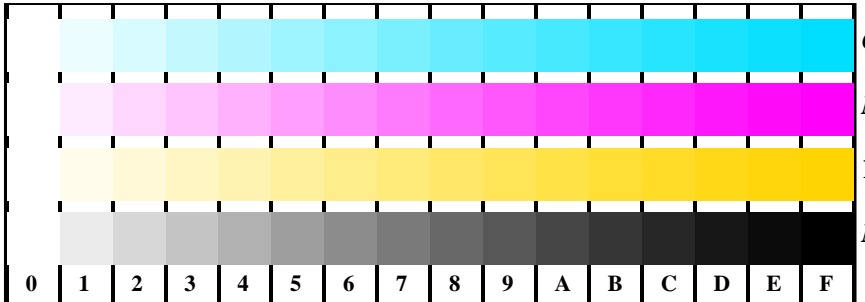
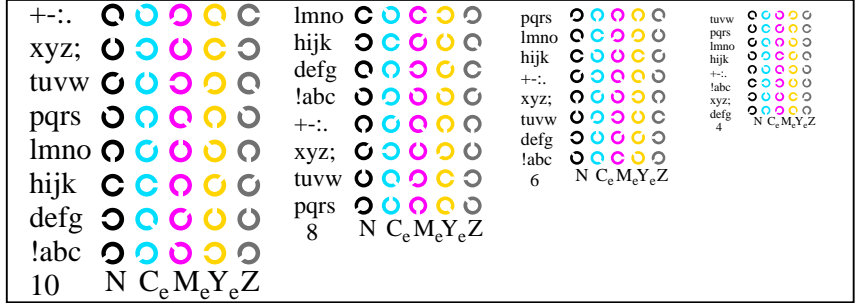


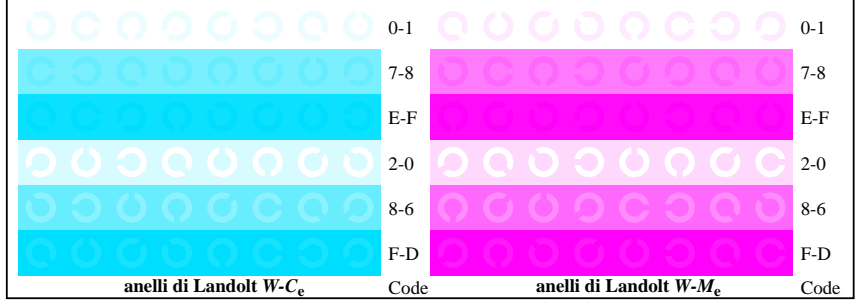
Grafico AI27 conformemente a grafico 2 a ISO/IEC 15775
Tavola dei colori cromatici CMYK



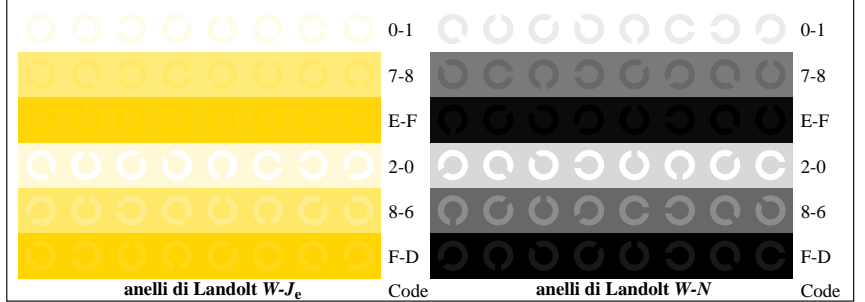
AI271-1, Fig. B4Wde: 16 equidistanti passi W-Ce; W-Me; W-Je; W-N; *rgb/cmy0->rgb_{de} setrgbcolor*



AI271-3, Fig. B5Wde: codice i Landolt anelli N; C_e; M_e; Y_e; Z; PS operator: *rgb->rgb_{de} setrgbcolor*



AI271-5, Fig. B6Wde: anelli di Landolt W-Ce; W-Me; PS operator: *rgb->rgb_{de} setrgbcolor*



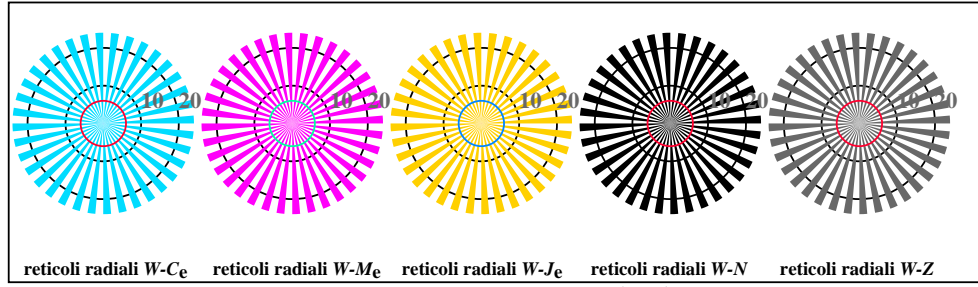
AI271-7, Fig. B7Wde: anelli di Landolt W-Je; W-N; PS operator: *rgb->rgb_{de} setrgbcolor*

Input: *rgb/cmy0/000n/w set...*
Output: *->rgb_{de} setrgbcolor*

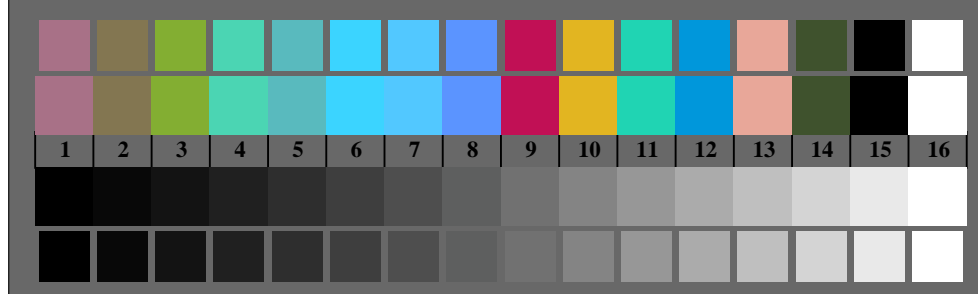
vedi file simili: <http://standards.iso.org/iso/9241/306/ed-2/AI27/AI27.HTM>
Informazioni tecniche: <http://farbe.it.tu-berlin.de/> o <http://farbe.it.tu-berlin.de/AE.HTM>



AI270-3, Fig. B1Wde: Flower motif, 14 prova colori CIE e 2 + 16 grigio passi (nf); PS operator: *settransfer, 3 colorimage*



AI270-5, Fig. B2Wde: reticoli radiali W-Ce; W-Me; W-Je; W-N; PS operator: *rgb->rgb_{de} setrgbcolor*



AI270-7, Fig. B3Wde: 14 prova colori CIE i 2 + 16 grigio passi (sf); *rgb/cmy0->rgb_{de} setrgbcolor*

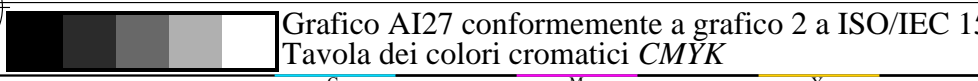
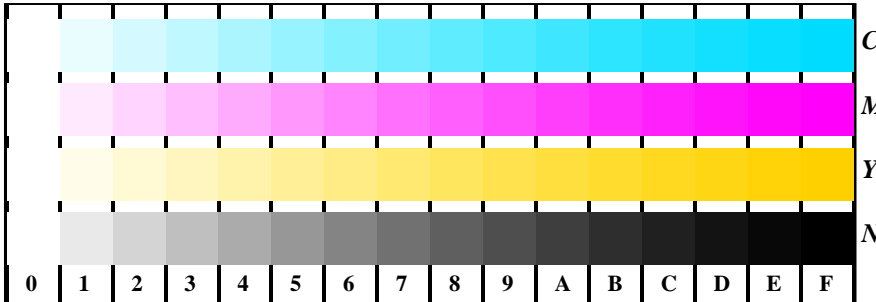
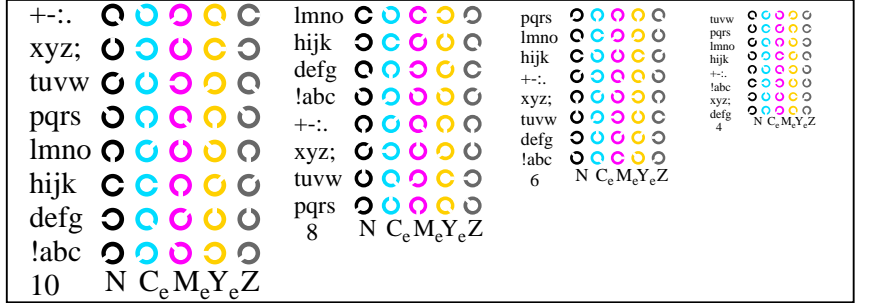


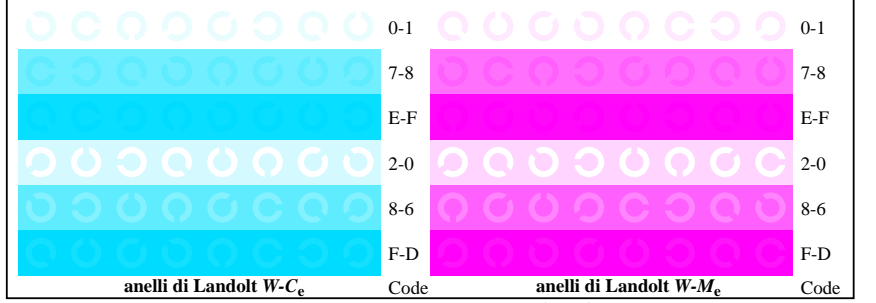
Grafico AI27 conformemente a grafico 2 a ISO/IEC 15775
Tavola dei colori cromatici CMYK



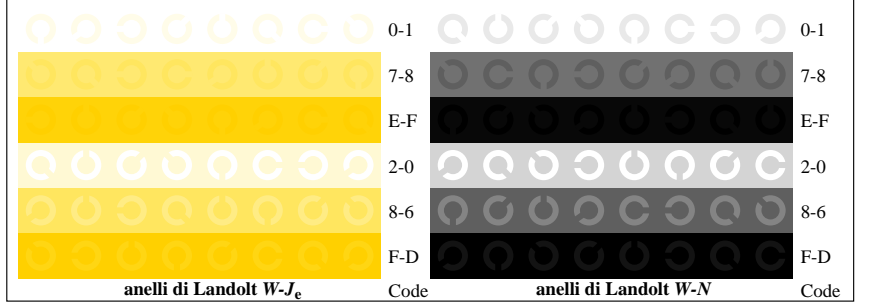
AI271-1, Fig. B4Wde: 16 equidistanti passi W-Ce; W-Me; W-Je; W-N; *rgb/cmy0->rgb_{de} setrgbcolor*



AI271-3, Fig. B5Wde: codice i Landolt anelli N; C_e; M_e; Y_e; Z; PS operator: *rgb->rgb_{de} setrgbcolor*



AI271-5, Fig. B6Wde: anelli di Landolt W-Ce; W-Me; PS operator: *rgb->rgb_{de} setrgbcolor*



AI271-7, Fig. B7Wde: anelli di Landolt W-Je; W-N; PS operator: *rgb->rgb_{de} setrgbcolor*

Input: *rgb/cmy0/000n/w set...*
Output: *->rgb_{de} setrgbcolor*

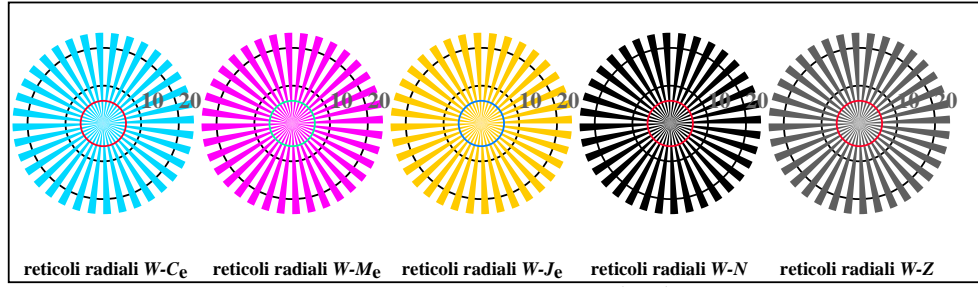
iscrizione TUB: 20190301-AI27/AI27L0FA.TXT /.PS
Applicazione per la misura dell'output di display et output di stampa
TUB materiale: code=rhata

vedi file simili: <http://standards.iso.org/iso/9241/306/ed-2/AI27/AI27.HTM>
Informazioni tecniche: <http://farbe.it.tu-berlin.de/> o <http://farbe.it.tu-berlin.de/AE.HTM>

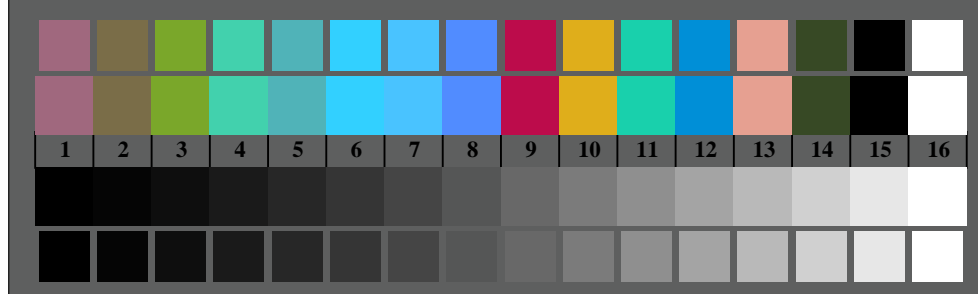
iscrizione TUB: 20190301-AI27/AI27L0FA.TXT /.PS
Applicazione per la misura dell'output di display et output di stampa
TUB materiale: code=rhata



AI270-3, Fig. B1Wde: Flower motif, 14 prova colori CIE e 2 + 16 grigio passi (nf); PS operator: *settransfer, 3 colorimage*



AI270-5, Fig. B2Wde: reticoli radiali W-Ce; W-Me; W-Je; W-N; PS operator: *rgb->rgb_{de} setrgbcolor*



AI270-7, Fig. B3Wde: 14 prova colori CIE i 2 + 16 grigio passi (sf); *rgb/cmy0->rgb_{de} setrgbcolor*

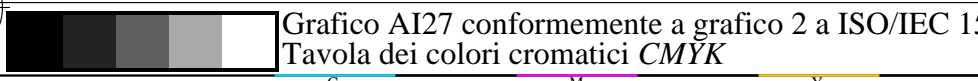
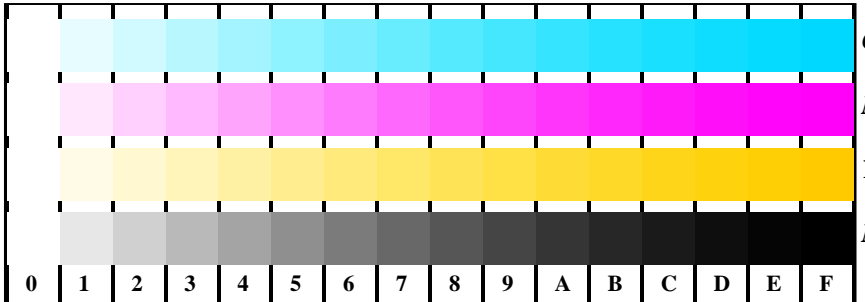
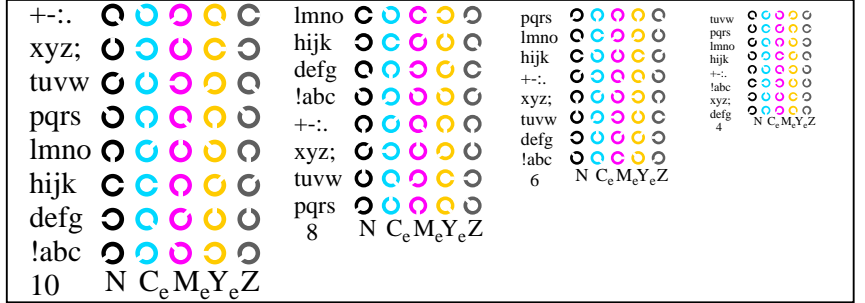


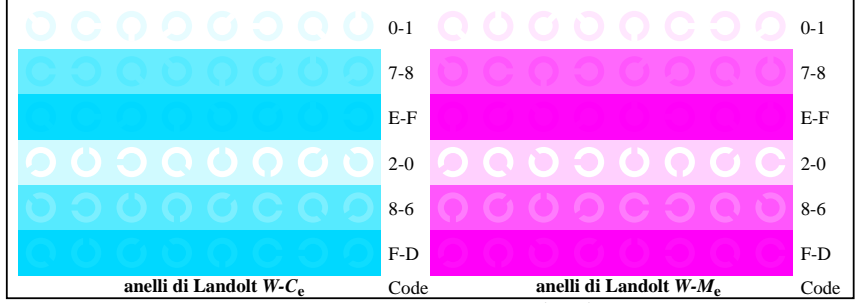
Grafico AI27 conformemente a grafico 2 a ISO/IEC 15775
Tavola dei colori cromatici CMYK



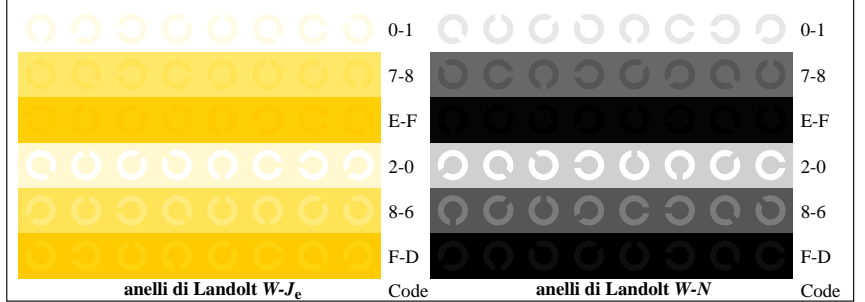
AI271-1, Fig. B4Wde: 16 equidistanti passi W-Ce; W-Me; W-Je; W-N; *rgb/cmy0->rgb_{de} setrgbcolor*



AI271-3, Fig. B5Wde: codice i Landolt anelli N; Ce; Me; Ye; Z; PS operator: *rgb->rgb_{de} setrgbcolor*



AI271-5, Fig. B6Wde: anelli di Landolt W-Ce; W-Me; PS operator: *rgb->rgb_{de} setrgbcolor*



AI271-7, Fig. B7Wde: anelli di Landolt W-Je; W-N; PS operator: *rgb->rgb_{de} setrgbcolor*

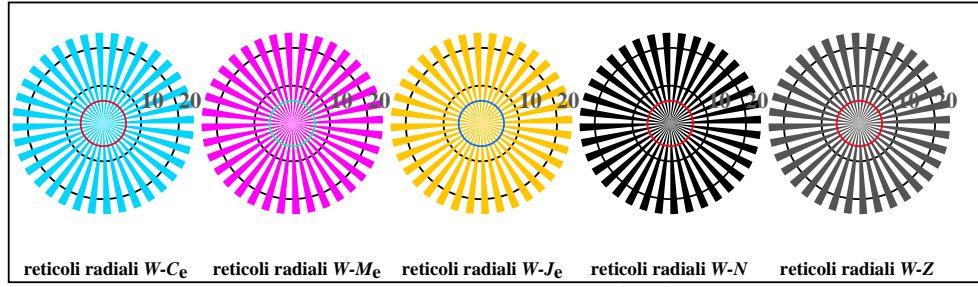
Input: *rgb/cmy0/000n/w set...*
Output: *->rgb_{de} setrgbcolor*

vedi file simili: <http://standards.iso.org/iso/9241/306/ed-2/AI27/AI27.HTM>
Informazioni tecniche: <http://farbe.it.tu-berlin.de/> o <http://farbe.it.tu-berlin.de/AE.HTM>

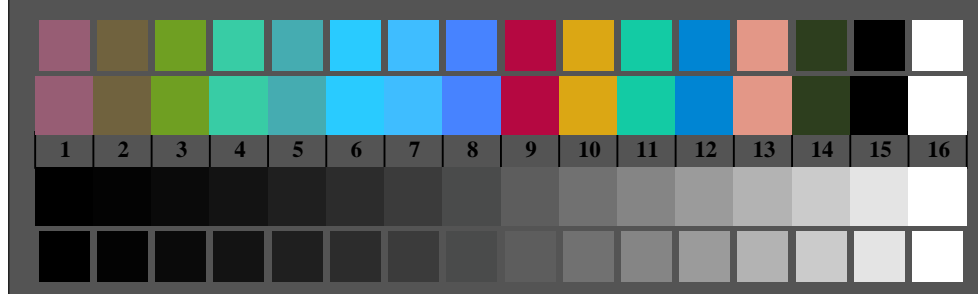
iscrizione TUB: 20190301-AI27/AI27L0FA.TXT /.PS
Applicazione per la misura dell'output di display et output di stampa
TUB materiale: code=rhata



AI270-3, Fig. B1Wde: Flower motif, 14 prova colori CIE e 2 + 16 grigio passi (nf); PS operator: *settransfer, 3 colorimage*



AI270-5, Fig. B2Wde: reticoli radiali W-Ce; W-Me; W-Je; W-N; PS operator: *rgb->rgb_{de} setrgbcolor*



AI270-7, Fig. B3Wde: 14 prova colori CIE i 2 + 16 grigio passi (sf); *rgb/cmy0->rgb_{de} setrgbcolor*

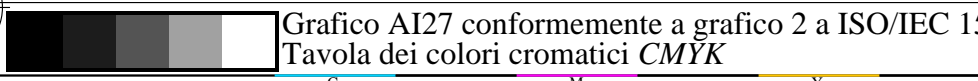
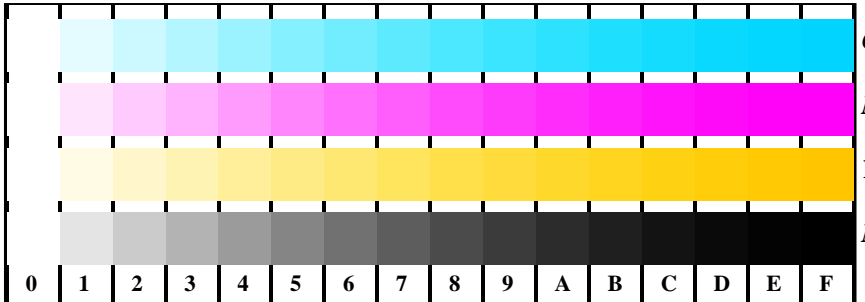
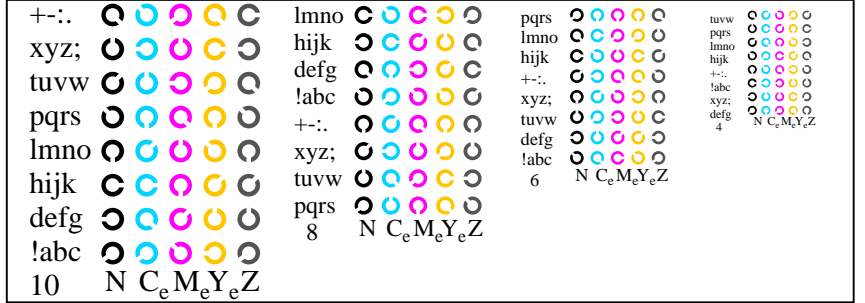


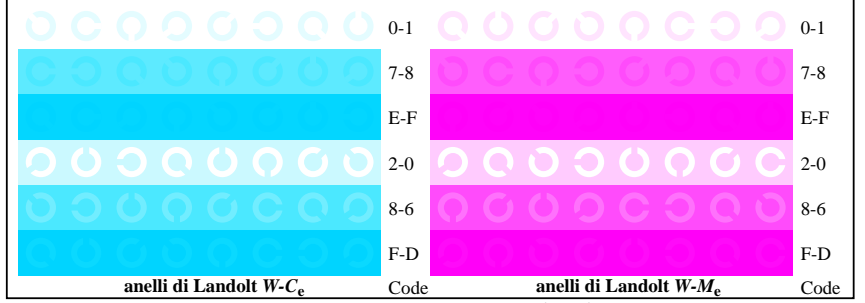
Grafico AI27 conformemente a grafico 2 a ISO/IEC 15775
Tavola dei colori cromatici CMYK



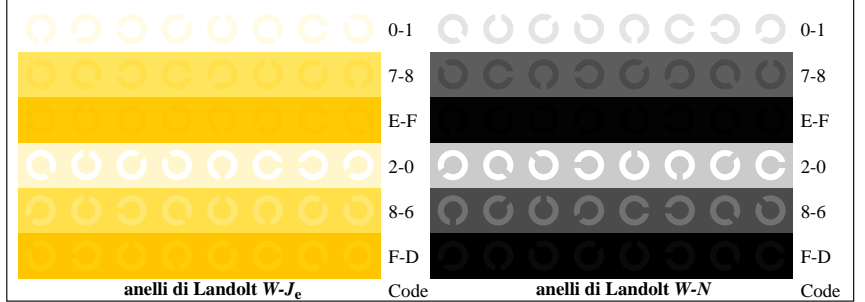
AI271-1, Fig. B4Wde: 16 equidistanti passi W-Ce; W-Me; W-Je; W-N; *rgb/cmy0->rgb_{de} setrgbcolor*



AI271-3, Fig. B5Wde: codice i Landolt anelli N; Ce; Me; Ye; Z; PS operator: *rgb->rgb_{de} setrgbcolor*



AI271-5, Fig. B6Wde: anelli di Landolt W-Ce; W-Me; PS operator: *rgb->rgb_{de} setrgbcolor*



AI271-7, Fig. B7Wde: anelli di Landolt W-Je; W-N; PS operator: *rgb->rgb_{de} setrgbcolor*

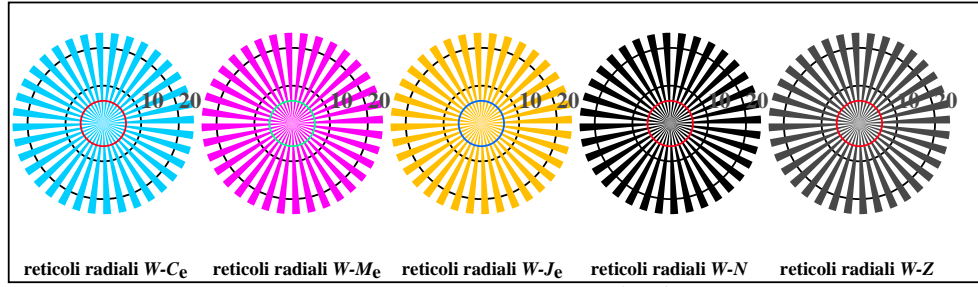
Input: *rgb/cmy0/000n/w set...*
Output: *->rgb_{de} setrgbcolor*

vedi file simili: <http://standards.iso.org/iso/9241/306/ed-2/AI27/AI27.HTM>
Informazioni tecniche: <http://farbe.it.tu-berlin.de/> o <http://farbe.it.tu-berlin.de/AE.HTM>

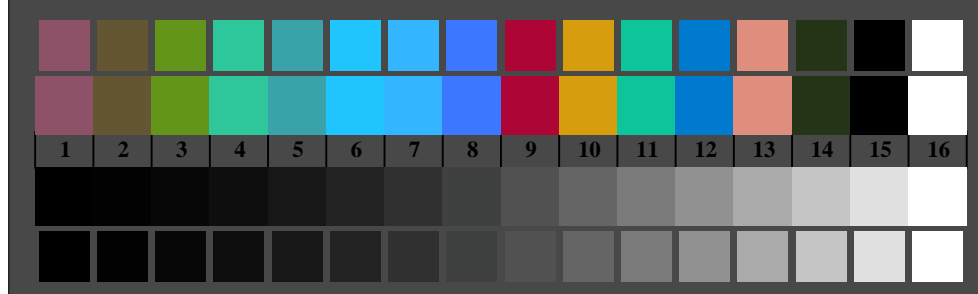
iscrizione TUB: 20190301-AI27/AI27L0FA.TXT /.PS
Applicazione per la misura dell'output di display et output di stampa
TUB materiale: code=rhata



AI270-3, Fig. B1Wde: Flower motif, 14 prova colori CIE e 2 + 16 grigio passi (nf); PS operator: *settransfer, 3 colorimage*



AI270-5, Fig. B2Wde: reticoli radiali W-Ce; W-Me; W-Je; W-N; PS operator: *rgb->rgb_{de} setrgbcolor*



AI270-7, Fig. B3Wde: 14 prova colori CIE i 2 + 16 grigio passi (sf); *rgb/cmy0->rgb_{de} setrgbcolor*

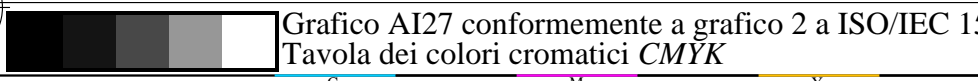
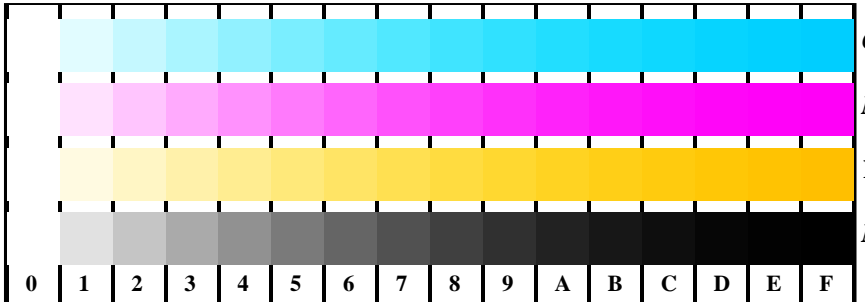
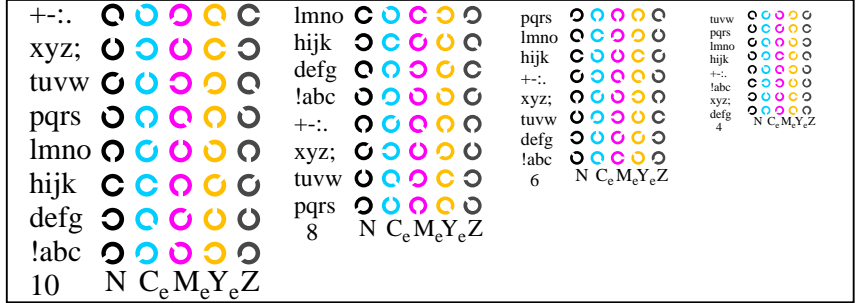


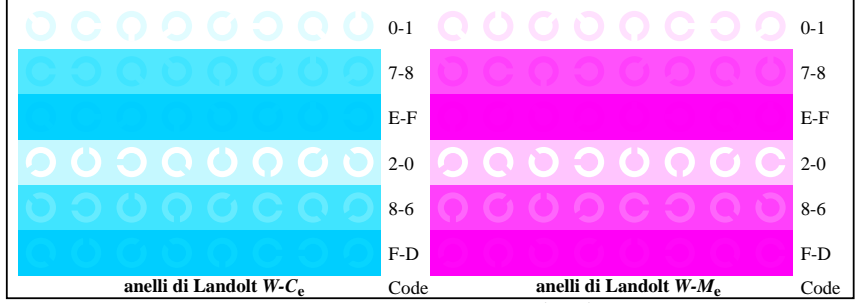
Grafico AI27 conformemente a grafico 2 a ISO/IEC 15775
Tavola dei colori cromatici CMYK



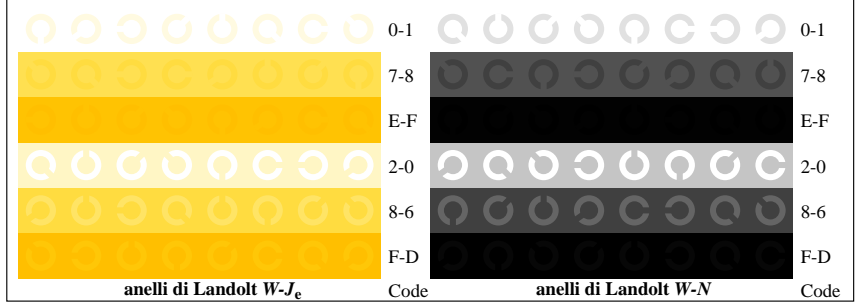
AI271-1, Fig. B4Wde: 16 equidistanti passi W-Ce; W-Me; W-Je; W-N; *rgb/cmy0->rgb_{de} setrgbcolor*



AI271-3, Fig. B5Wde: codice i Landolt anelli N; Ce; Me; Ye; Z; PS operator: *rgb->rgb_{de} setrgbcolor*



AI271-5, Fig. B6Wde: anelli di Landolt W-Ce; W-Me; PS operator: *rgb->rgb_{de} setrgbcolor*



AI271-7, Fig. B7Wde: anelli di Landolt W-Je; W-N; PS operator: *rgb->rgb_{de} setrgbcolor*

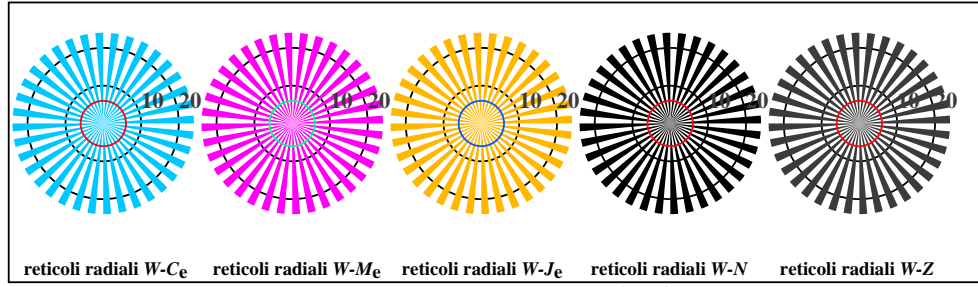
Input: *rgb/cmy0/000n/w set...*
Output: *->rgb_{de} setrgbcolor*

vedi file simili: <http://standards.iso.org/iso/9241/306/ed-2/AI27/AI27.HTM>
Informazioni tecniche: <http://farbe.it.tu-berlin.de/> o <http://farbe.it.tu-berlin.de/AE.HTM>

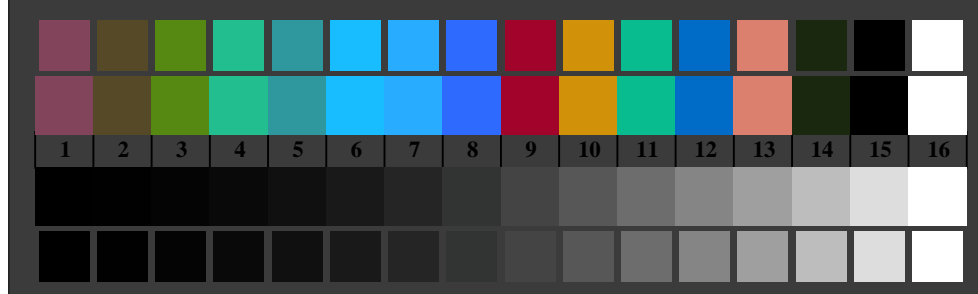
iscrizione TUB: 20190301-AI27/AI27L0FA.TXT /.PS
Applicazione per la misura dell'output di display et output di stampa
TUB materiale: code=rhata



AI270-3, Fig. B1Wde: Flower motif, 14 prova colori CIE e 2 + 16 grigio passi (nf); PS operator: *settransfer, 3 colorimage*



AI270-5, Fig. B2Wde: reticoli radiali W-Ce; W-Me; W-Je; W-N; PS operator: *rgb->rgb_{de} setrgbcolor*



AI270-7, Fig. B3Wde: 14 prova colori CIE i 2 + 16 grigio passi (sf); *rgb/cmy0->rgb_{de} setrgbcolor*

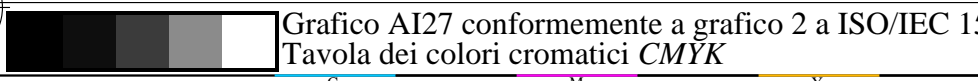
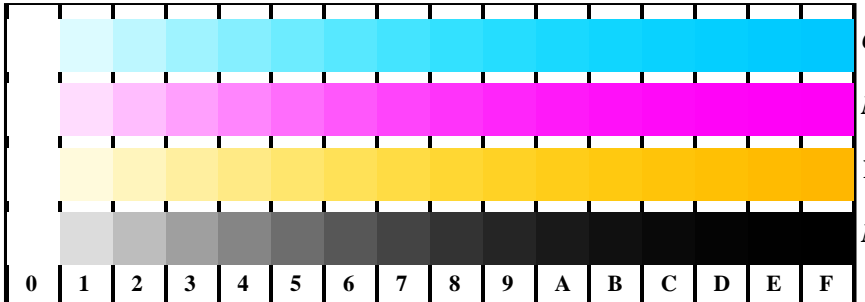
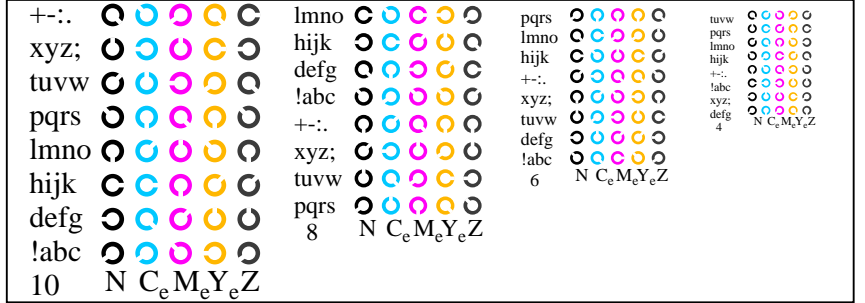


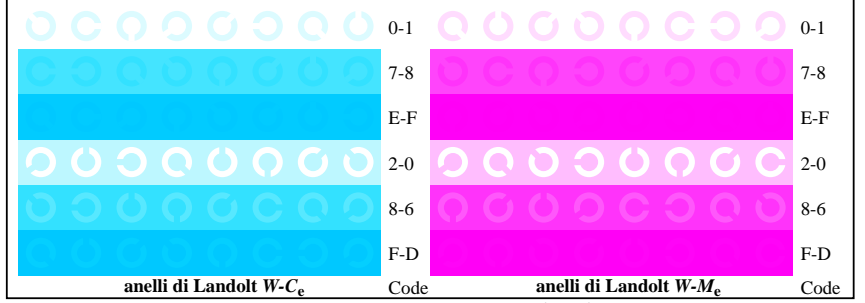
Grafico AI27 conformemente a grafico 2 a ISO/IEC 15775
Tavola dei colori cromatici CMYK



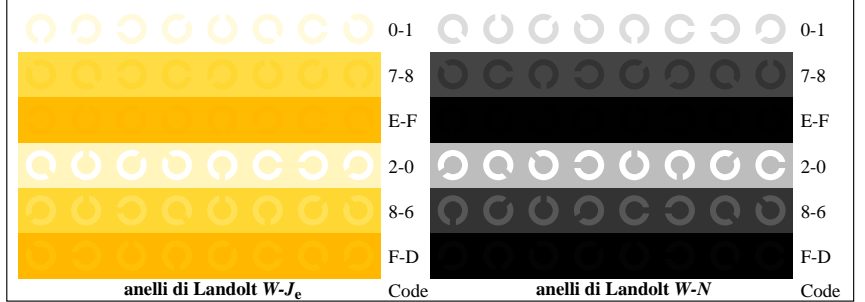
AI271-1, Fig. B4Wde: 16 equidistanti passi W-Ce; W-Me; W-Je; W-N; *rgb/cmy0->rgb_{de} setrgbcolor*



AI271-3, Fig. B5Wde: codice i Landolt anelli N; C_e; M_e; Y_e; Z; PS operator: *rgb->rgb_{de} setrgbcolor*



AI271-5, Fig. B6Wde: anelli di Landolt W-Ce; W-Me; PS operator: *rgb->rgb_{de} setrgbcolor*



AI271-7, Fig. B7Wde: anelli di Landolt W-Je; W-N; PS operator: *rgb->rgb_{de} setrgbcolor*

Input: *rgb/cmy0/000n/w set...*
Output: *->rgb_{de} setrgbcolor*