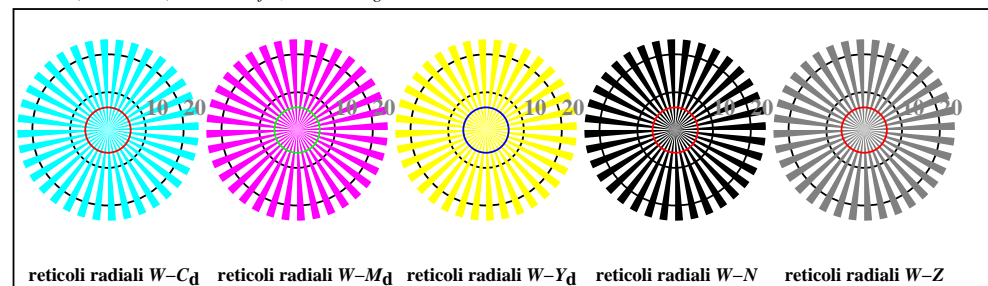




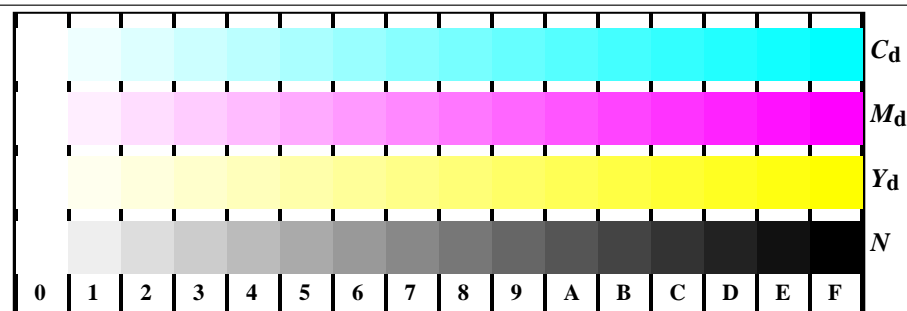
AI280-3, B1W\*dd: ; PS settransfer, 3 colorimage



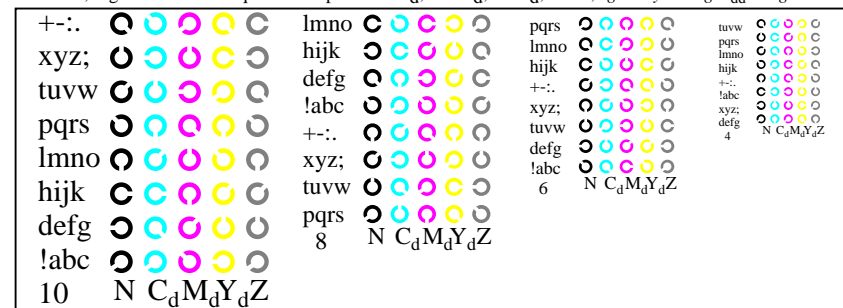
AI280-5, Fig. B2W\*dd: reticoli radiali W-C<sub>d</sub>; W-M<sub>d</sub>; W-Y<sub>d</sub>; W-N; PS operator  $rgb \rightarrow rgb^*_{dd}$  setrgbcolor



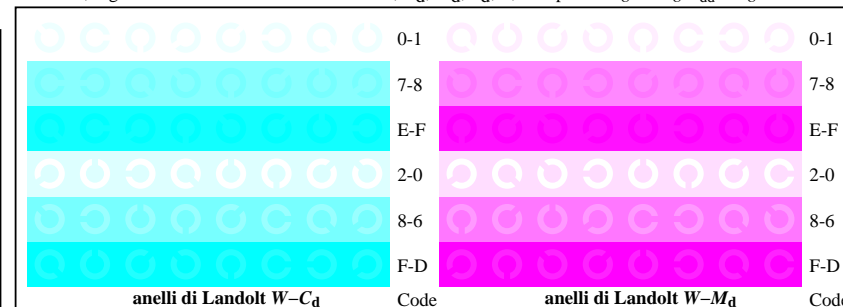
AI280-7, Fig. B3W\*dd: 14 prova colori CIE i 2 + 16 grigio passi (sf);  $rgb/cmy_0 \rightarrow rgb^*_{dd}$  setrgbcolor



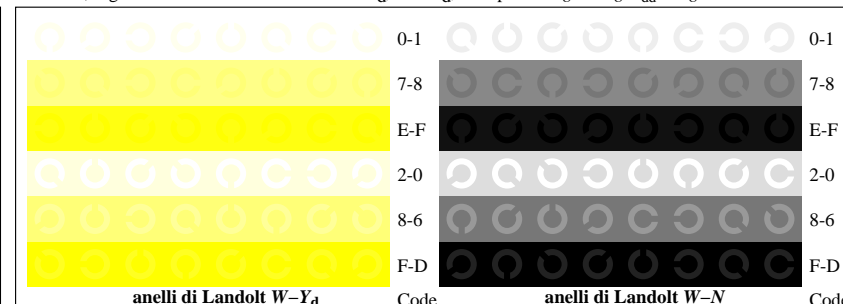
AI281-1, Fig. B4W\*dd: 16 equidistante passi W-C<sub>d</sub>; W-M<sub>d</sub>; W-J<sub>d</sub>; W-N;  $rgb/cmy_0 \rightarrow rgb^*_{dd}$  setrgbcolor



AI281-3, Fig. B5W\*dd: codice i Landolt anelli N; C<sub>d</sub>; M<sub>d</sub>; Y<sub>d</sub>; Z; PS operator  $rgb \rightarrow rgb^*_{dd}$  setrgbcolor



AI281-5, Fig. B6W\*dd: anelli di Landolt W-C<sub>d</sub>; W-M<sub>d</sub>; PS operator  $rgb \rightarrow rgb^*_{dd}$  setrgbcolor



AI281-7, Fig. B7W\*dd: anelli di Landolt W-Y<sub>d</sub>; W-N; PS operator  $rgb \rightarrow rgb^*_{dd}$  setrgbcolor